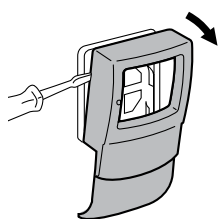
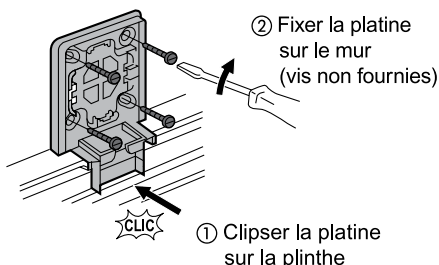


Cadre ASL 1 poste 0 989 91

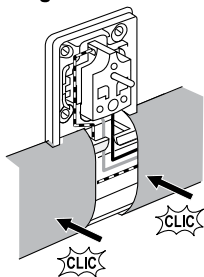
Démontage



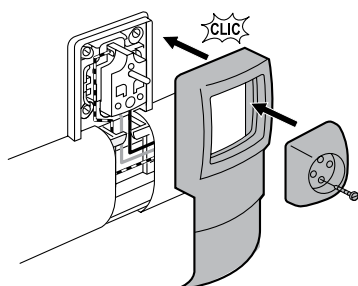
Montage de la platine



Remontage



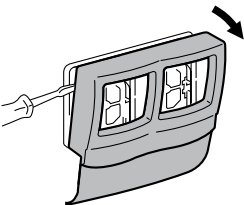
① Clipser les couvercles en butée sur la platine



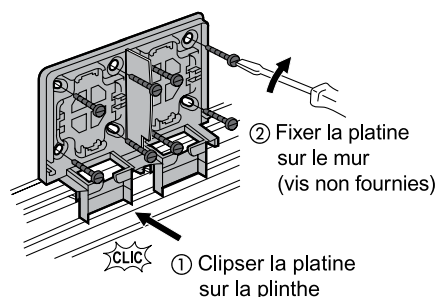
② Clipser le cadre sur la platine

Cadre ASL 2 postes 0 989 92

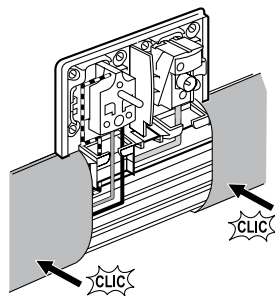
Démontage



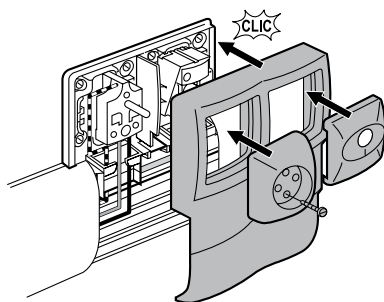
Montage de la platine




Remontage




① Clipser les couvercles en butée sur la platine



② Clipser le cadre sur la platine

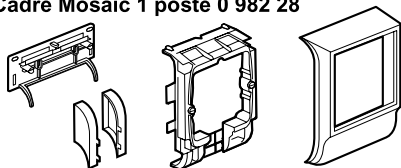
 Avant toute intervention, couper le courant.
Respecter strictement les conditions d'installation et d'utilisation.

Pro & Consumer Service
BP 30076 / F - 87002 Limoges Cedex 1

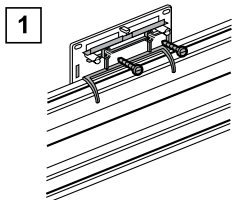
 Service Consommateurs
0825 360 360 (0,15€ TTC/min)

www.legrand.com

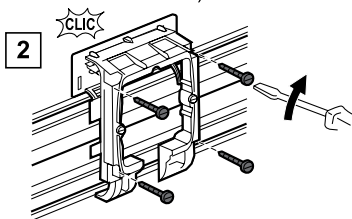
Cadre Mosaic 1 poste 0 982 28



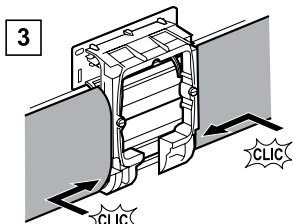
Montage (exemple avec une prise de courant non fournie)



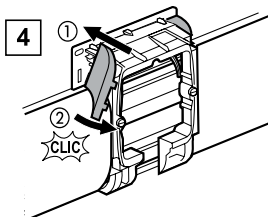
1 Fixer la platine dans le mur par 2 vis (non fournies)



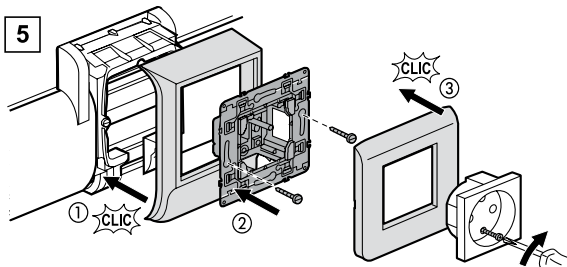
2 Clipser et visser le support (vis fournies)



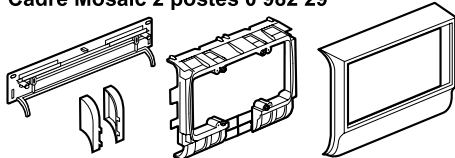
3 Clipser les 2 couvercles en butée



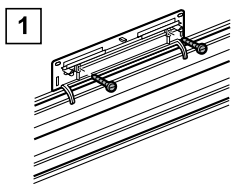
4 Emboîter les embouts dans les oblongs Puis clipser par rotation



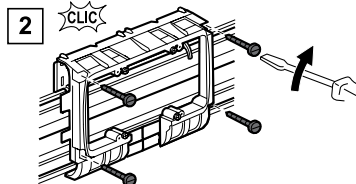
Cadre Mosaic 2 postes 0 982 29



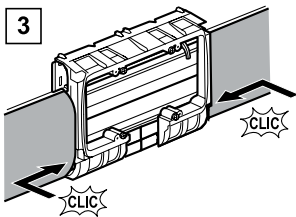
Montage (exemple avec 2 prises de courant non fournies)



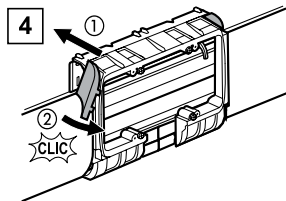
1 Fixer la platine dans le mur par 2 vis (non fournies)



2 Clipser et visser le support (vis fournies)



3 Clipser les 2 couvercles en butée



4 Emboîter les embouts dans les oblongs Puis clipser par rotation

