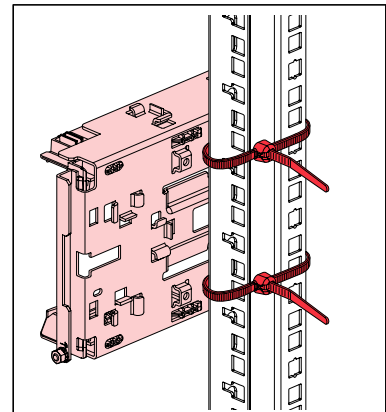
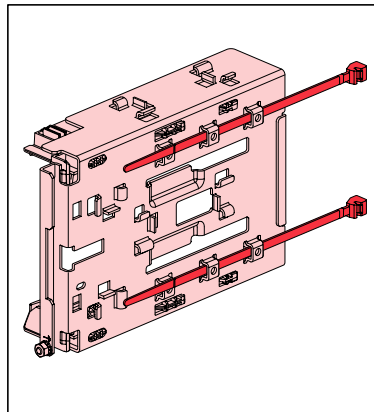
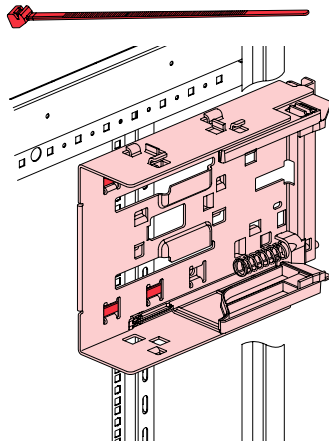
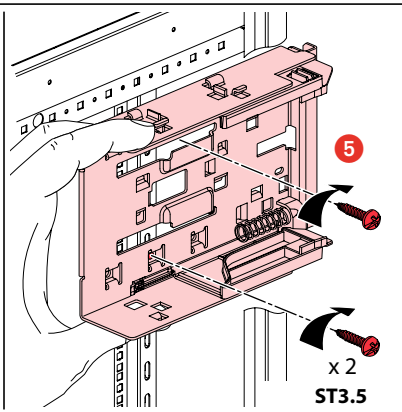
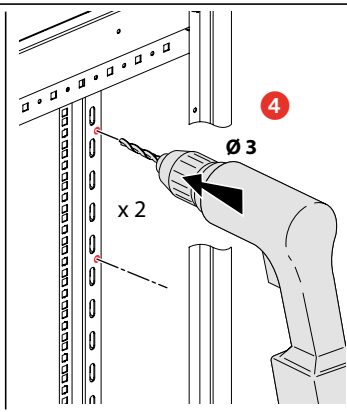
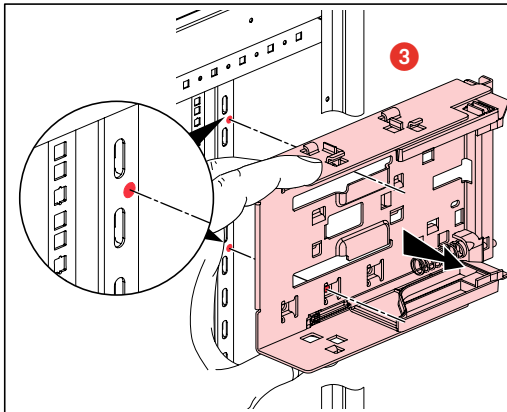
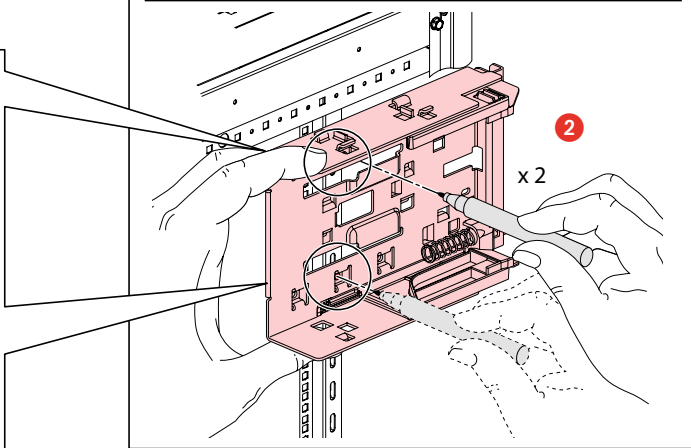
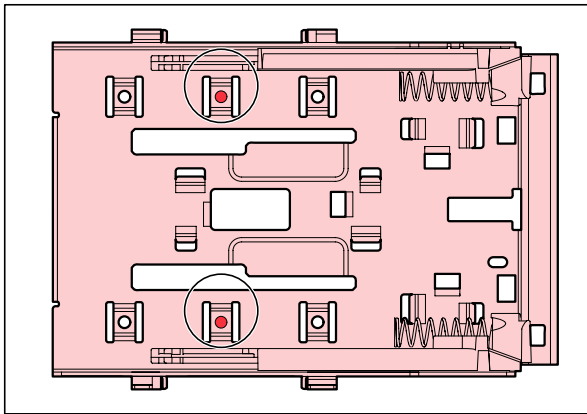
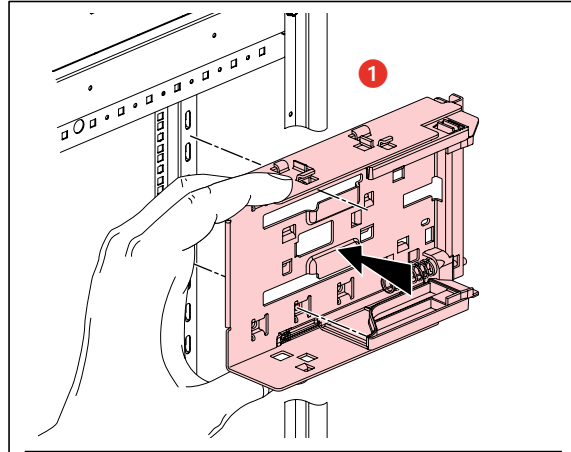
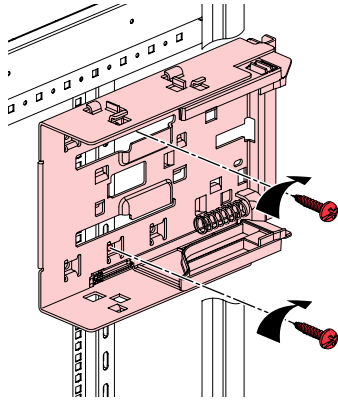
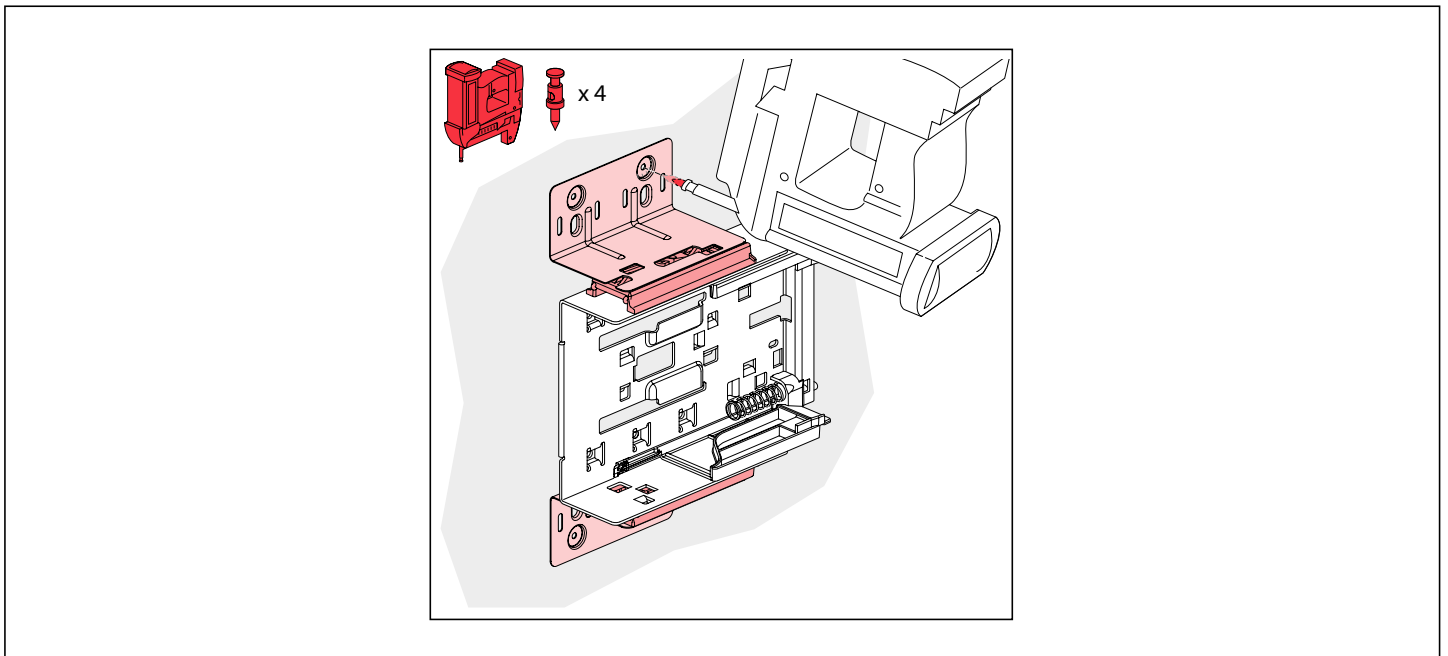
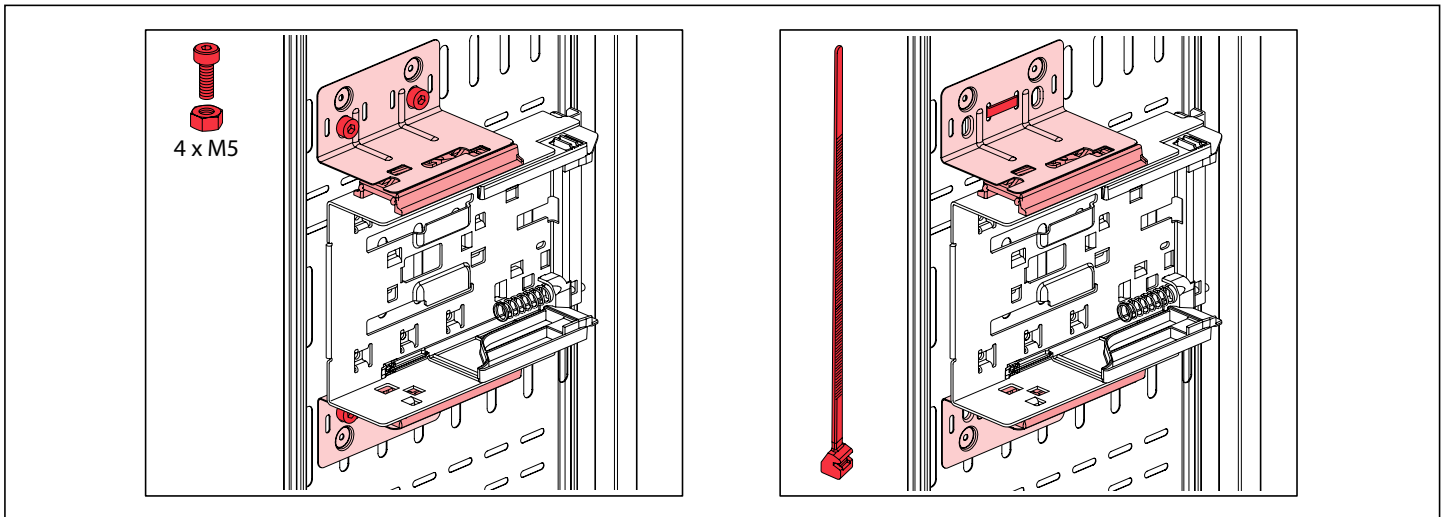
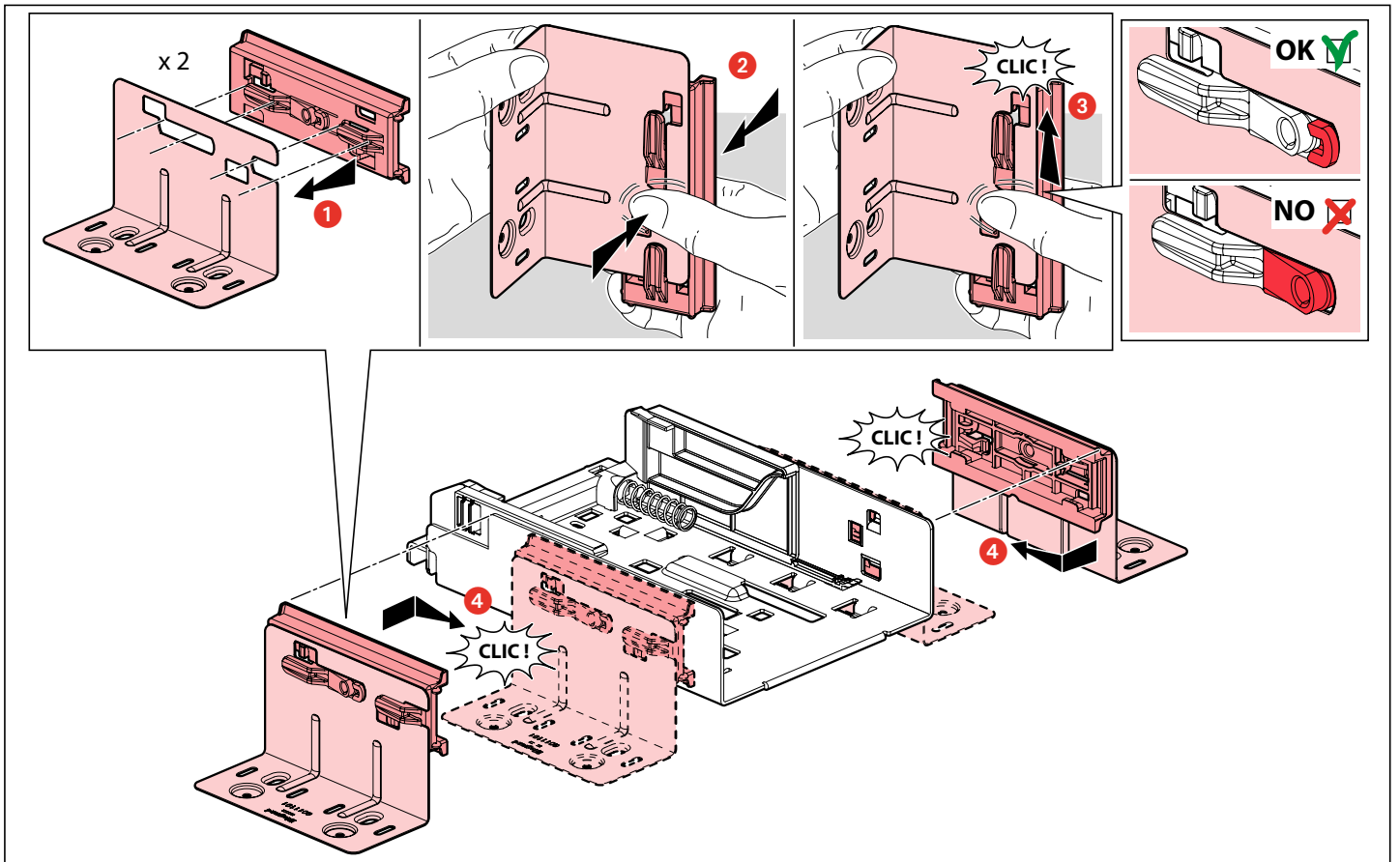


2 x ST3.5



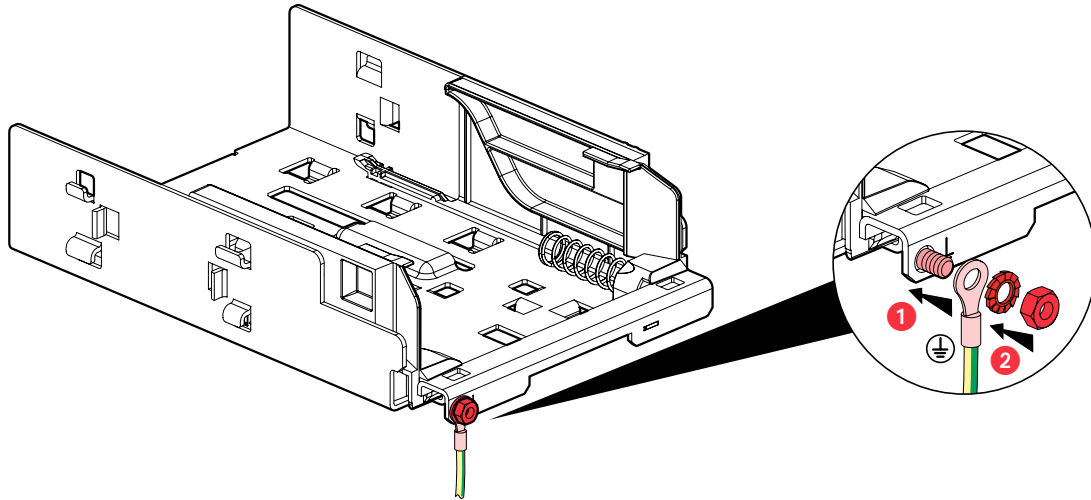


- Mise à la terre
- Verbinding met de aarde
- Grounding

- Erdung
- Puesta a tierra
- Ligação à terra

- Γείωση
- Заземление
- Messa a terra

- 接地
- تأريض

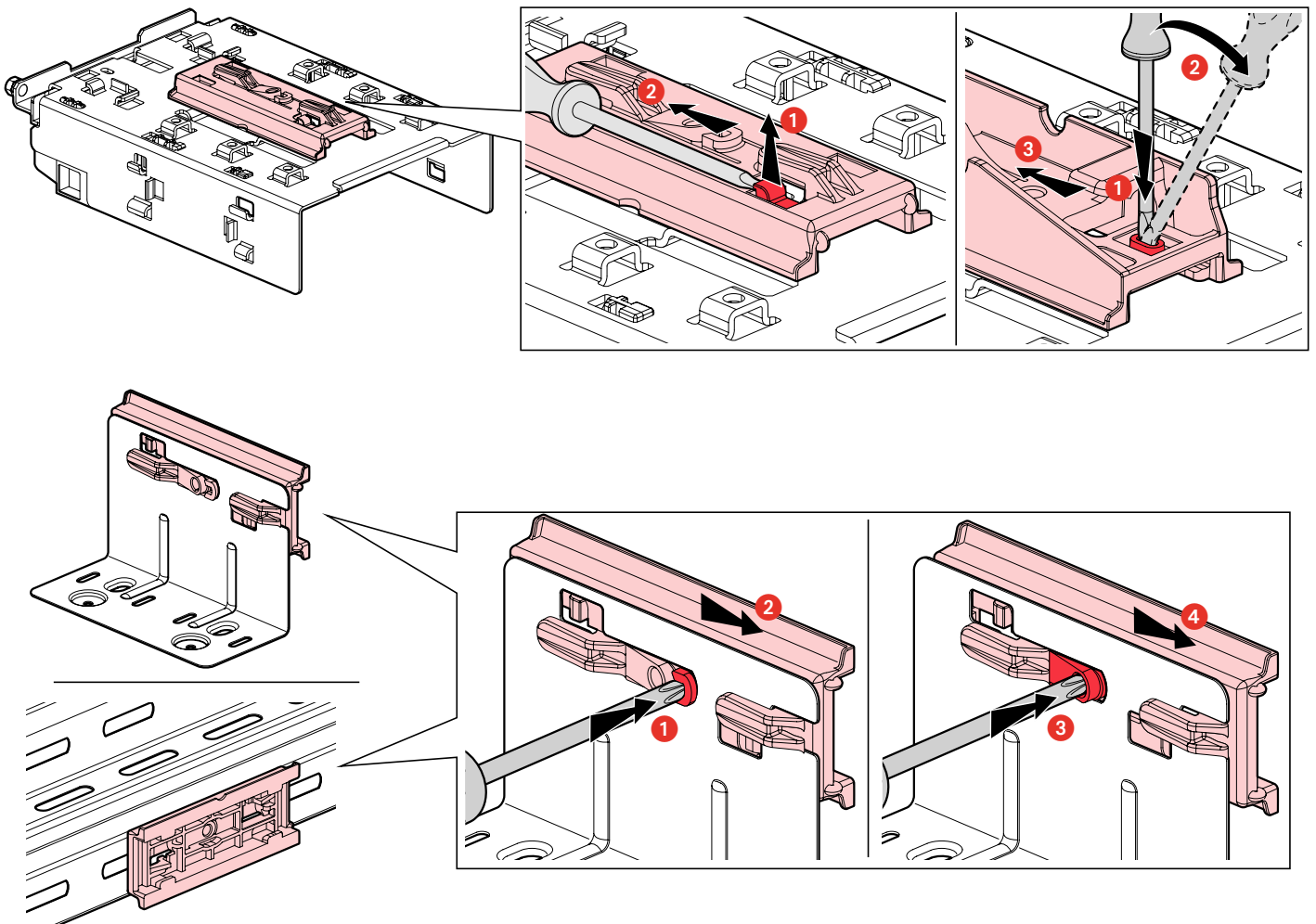


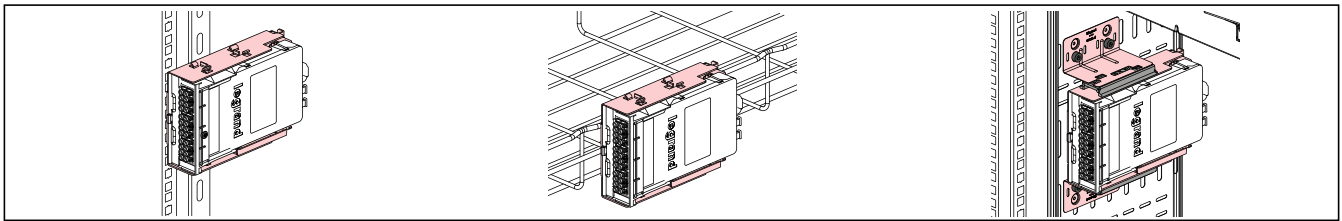
- Démontage
- Demontage
- Removal

- Ausbau
- Desmontaje
- Desmontagem

- Αφαίρεση
- демонтаж
- Smontaggio

- 拆卸
- التفكيك





	● 0 321 80	6 SC multimode cassette
	● 0 321 82	12 SC multimode cassette
	● 0 321 84	6 SC monomode cassette
	● 0 321 86	12 SC monomode cassette
	● 0 321 81	6 LC multimode cassette
	● 0 321 83	12 LC multimode cassette
	● 0 321 85	6 LC monomode cassette
	● 0 321 87	12 LC monomode cassette

	0 321 41	Splice cassette
--	----------	-----------------

	● 0 321 11	SC duplex HD for 12 singlemode fibres
	● 0 321 21	SC duplex HD for 12 multimode fibres
	● 0 321 10	SC duplex for 6 singlemode fibres
	● 0 321 12	SC apc duplex for 6 singlemode fibres
	● 0 321 20	SC duplex for 6 multimode fibres
	● 0 321 13	LC duplex for 6 singlemode fibres
	● 0 321 23	LC duplex for 6 multimode fibres
	● 0 321 36	LC duplex for 6 multimode fibres (aqua)
	● 0 321 14	LC duplex for 12 singlemode fibres
	● 0 321 16	LC apc duplex for 12 singlemode fibres
	● 0 321 24	LC duplex for 12 multimode fibres
	● 0 321 37	LC duplex for 12 multimode fibres (aqua)
	● 0 321 15	LC duplex HD for 24 singlemode fibres
	● 0 321 25	LC duplex HD for 24 multimode fibres
	● 0 321 17	ST for 6 singlemode fibres
	● 0 321 27	ST for 6 multimode fibres
	● 0 321 33	4 MTP adapter, pass-through, singlemode
	● 0 321 34	4 MTP adapter, pass-through, multimode

	● 0 321 42	24 LC multimode MTP cassette
	● 0 321 44	24 LC monomode MTP cassette
	● 0 321 43	12 SC multimode MTP cassette
	● 0 321 45	12 SC monomode MTP cassette
	● 0 321 48	12 LC multimode MTP cassette
	● 0 321 49	12 LC monomode MTP cassette

	"On demand"
--	-------------

	0 337 55	Cassette 6 RJ45 to equipped
	0 337 95	Cassette HD 12 RJ45 to equipped
	0 337 53	Cat 5e
	0 337 63	UTP Cat 6
	0 337 73	Cat 6A
	0 337 54	FTP Cat 5e
	0 337 64	Cat 6
	0 337 65	STP Cat 6
	0 337 75	Cat 6A
	*0 337 85	STP Cat 8
		*Only for ref. 0 337 55

⚠ Consignes de sécurité (FR) (LU) (BE) (CH)

Avant toute intervention, couper le courant.
Respecter strictement les conditions d'installation et d'utilisation.

⚠ Veiligheidsvoorschriften (NL) (BE)

Onderbreek voor enige ingreep de stroom.
Neem de installatie- en gebruiksvoorwaarden nauwgezet in acht.

⚠ Safety instructions (GB) (IE)

Make sure the power supply is disconnected before any intervention.
Strictly comply with instructions for installation and use.

⚠ Sicherheitshinweise (DE) (CH)

Vor jeglichem Eingriff die Spannungsfreiheit sicherstellen.
Einbau- und Gebrauchsanleitungen sind genau zu beachten.

⚠ Consignas de seguridad (ES)

Antes de realizar cualquier intervención, cortar la corriente eléctrica.
Respetar estrictamente las condiciones de instalación y uso.

⚠ Instruções de segurança (PT)

Antes de qualquer intervenção, desligar a corrente.
Respeitar rigorosamente as condições de instalação e de utilização.

⚠ Συστάσεις ασφαλείας (GR) (CY)

Πριν από οποιαδήποτε επέμβαση, διακόψτε την παροχή ρεύματος.
Να τηρείτε ανστηρά τις συνθήκες εγκατάστασης και χρήσης.

⚠ Меры предосторожности (RU)

Отключить питание перед проведением любых ремонтных работ.
Строго соблюдайте требования к условиям монтажа и эксплуатации.

⚠ Istruzioni di sicurezza (IT) (CB)

Prima di qualsiasi intervento, interrompere l'alimentazione.
Rispettare scrupolosamente le condizioni d'installazione e uso.

⚠ 安全提示
在任何干涉以前一定要断电, 严格遵守安全和使用的规定。

إرشادات الأمان: ⚠
«إقطع التيار الكهربائي قبل أي تدخل. تقيّد تقييداً تاماً بشروط التركيب والاستخدام.»