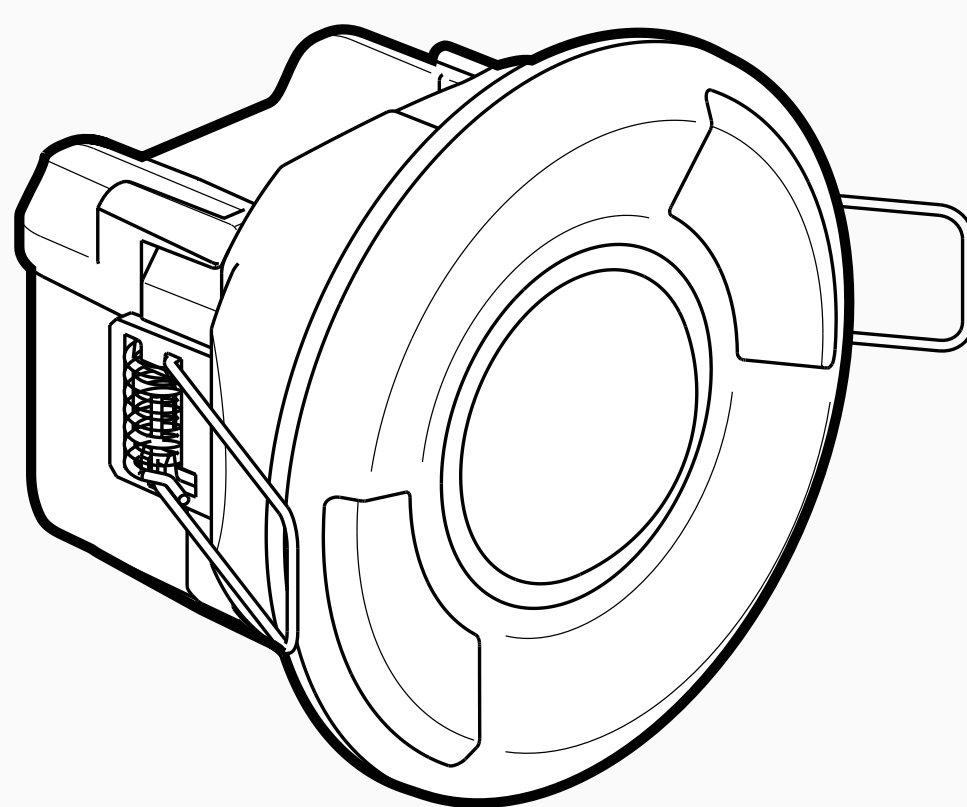


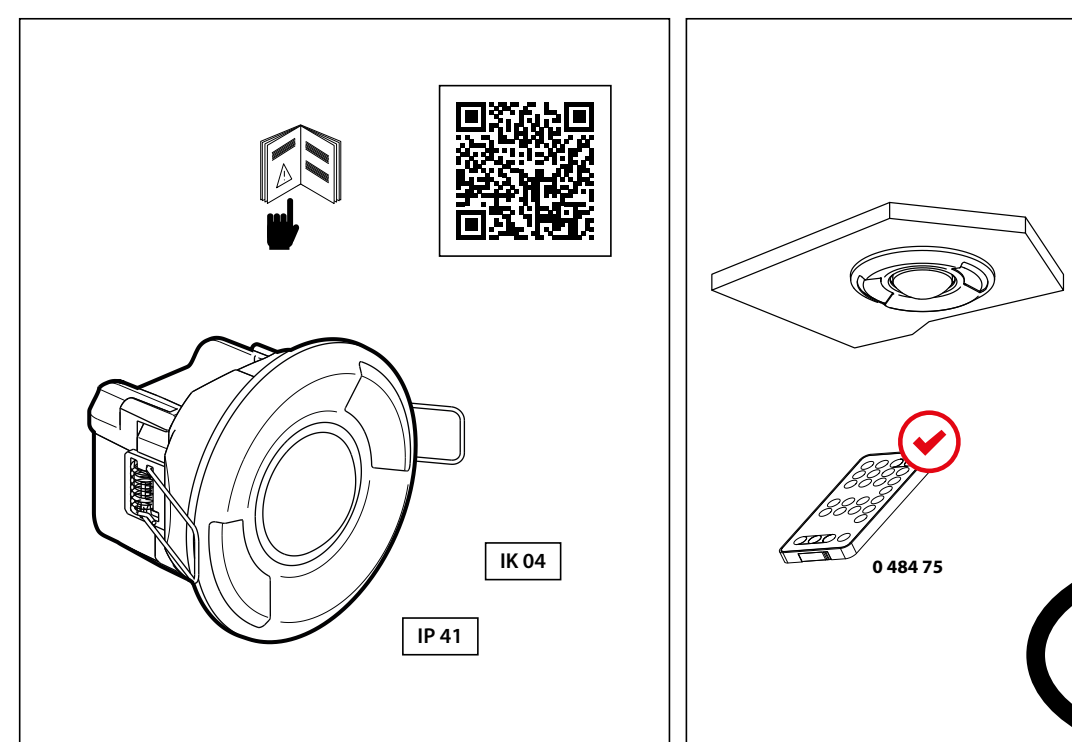
Green-i™

GI-SRW-D / GI-SRB-D

0 484 51 / 55



0 484 51 / 55



GB

• **Instruction Sheet**

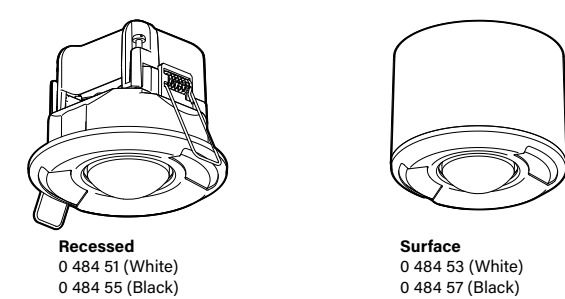
	- 100 - 240 V~ - 100 - 240 Volt~		Garantie/ Guaranteed	Maximum
	50 / 60 Hz		16 V 56 mA	16 V 75 mA
	2 x 1.5mm ² / 1 x 2.5mm ²		<ul style="list-style-type: none"> - PIR (Passive Infra Red) - IV - IR - PIR (인체감지) 	
	7 mm		10 s	
	-5°C / 30°C		<ul style="list-style-type: none"> - Ø 14 m - Ø 14 meter 	
	2000 lux			
	IP41			

LE7700AR

legrand 128, av. du Maréchal-de-Lattre-de-Tassigny - 87045 LIMOGES Cedex
Tel. : 33(0)5 55 06 87 87 - Fax : 33(0)5 55 06 88 88
www.legrand.com

GREEN-I Catalogue Number(s): 0 484 51/53/55/57

GI-SRW-D / GI-SSW-D / GI-SRB-D / GI-SSB-D STANDARD RECESSED / SURFACE DALI LIGHTING CONTROL SENSOR



CONTENT

1. USE	1
2. TECHNICAL CHARACTERISTICS	1
3. DIMENSIONS	2
4. CONNECTION	2
5. INSTALLATION	3
6. SETTINGS	5
7. COVERAGE PERFORMANCE	7
8. FONCTIONNEMENT	7
9. MAINTENANCE	8
10. STANDARDS	8

1. USE

This device is used to control DALI light automatically by detecting movement, using infrared (IR) technology. This motion sensor has a 360° detection angle, and when positioned 2.5m above the ground, and a 14m diameter detection area. It is installed on recessed ceiling (0 484 51 / 0 484 55) or surface ceiling (0 484 53 / 0 484 57). It is quick and easy to set, using potentiometers or an IR remote control (0 484 75).

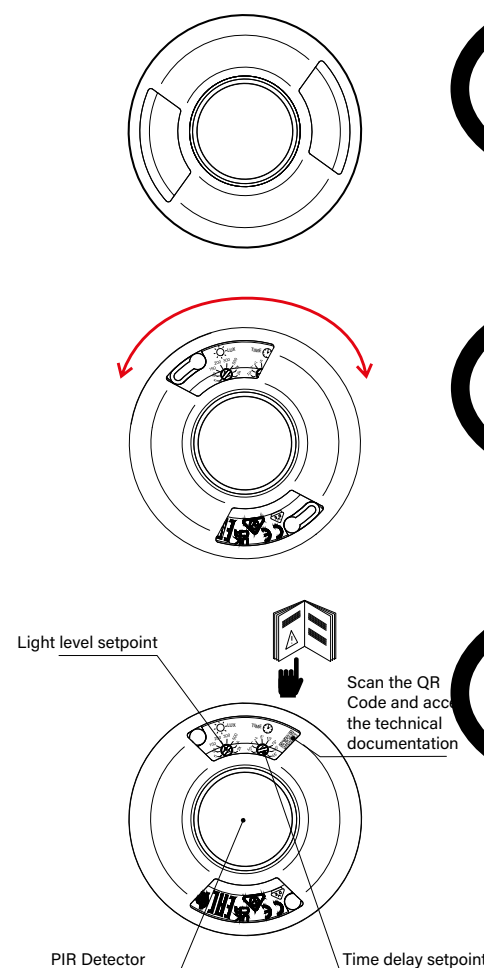
Detection type: Infrared (PIR)
Mounting type: Ceiling
Time Delay: 10sec to 45min
Light Level Setpoint: 5...2000lux

2. TECHNICAL CHARACTERISTICS

2.1 Technical data
Voltage: 100-240V AC
Frequency: 50 / 60 Hz
Power consumption: 0.17W
Output: DALI
Cabling: 2x1.5mm² or 1x2.5mm²
Flush-mounting diameter: 67 mm
Weight: 89.6 g (0 484 51 / 0 484 55)
120.1 g (0 484 53 / 0 484 57)
Impact resistance: IK04
Penetration by solid bodies and liquids:
IP41 (0 484 51, 0 484 55)
IP40 (0 484 53, 0 484 57)
Operating temperature: -5°C to +30°C
Storage temperature: -20°C to +70°C

2.2 Features

- 1 DALI output for supplying the bus and controlling lighting
- 1 auxiliary input for overriding lightings using a push button connected to the line.
- 1 sensor (pyroelectric technology) with its lens for sensing movement.
- A daylight sensor measuring the natural and artificial light for driving lightings according to the daylight setpoint.
- An infrared protocol to configure.
 - Time delay
 - Daylight setpoint
 - Launch test mode
 - PIR Sensitivity



GB

• **Technical Sheet**

FR

• **Fiche technique**

ES

• **Ficha técnica**

Technical data sheet: 000000679_EN-01

Updated: 08/07/2025

Created: 08/07/2025

1/8