

Electronic Superimposed Ignitors for HS Lamps 600 and 750 W

Standard version

For high pressure sodium lamps (HS)

Phasing of the ignition voltage:

60–90 °el and 240–270 °el

Max. permitted casing temperature: 105 °C

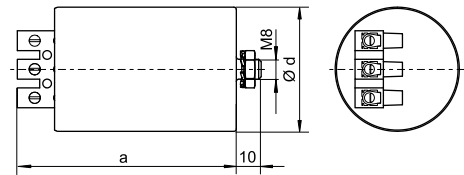
Screw terminals: 0.75–4 mm²

Fastening: male nipple with pre-assembled washer and nut

For luminaires of protection class I and II



Al casing



Type	Ref. No.	Voltage AC 50–60 Hz V	Max. lamp current A	Internal loss W	Inherent heating K	Ignition voltage kV	Load capacity pF	Switch-off time sec./Hz	Casing				Weight g
									d (Ø) mm	a mm	b mm	c mm	
Aluminium casing (Al)													
Z 750 S	146990	220–240	8	< 3	< 20	4–5	20–100	—	50	90	—	—	360