

# Lampholders for Discharge Lamps

E40 lampholders

Casing: PPS, black, T240

Fixing bracket with tapped fixing holes M5

Weight: 122.9/123.3 g, unit: 40 pcs.

Type: 12614/12612

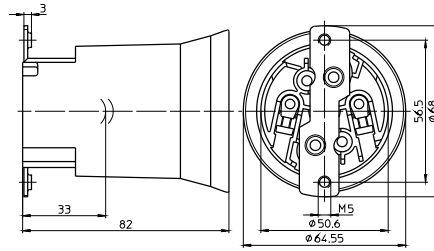
**Ref. No.: 400917**

**Ref. No.: 400918** with lamp safety catch

With steel thread

**Ref. No.: 536220**

**Ref. No.: 533432** with lamp safety catch



1

2

E40 lampholders

Casing: porcelain, white, T270

Oblong holes for screws M5

Weight: 224/229.3 g, unit: 48 pcs.

Type: 12800/12801

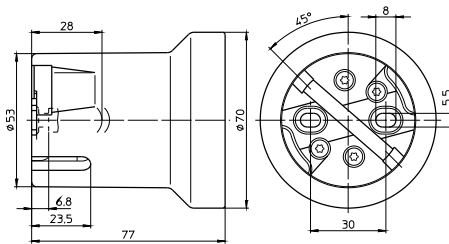
**Ref. No.: 108208**

**Ref. No.: 107780** with lamp safety catch

With steel thread

**Ref. No.: 532602**

**Ref. No.: 532603** with lamp safety catch



3

4

E40 lampholders

Casing: porcelain, white, T270

Fixing bracket with slots for screws M5

Weight: 252.3/243 g, unit: 48 pcs.

Type: 12810/12811

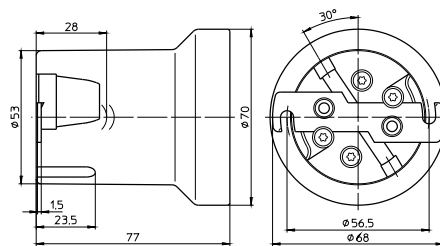
**Ref. No.: 108374**

**Ref. No.: 108375** with lamp safety catch

With steel thread

**Ref. No.: 532604**

**Ref. No.: 532605** with lamp safety catch



5

6

E40 lampholders

Casing: porcelain, white, T270

Fixing bracket with tapped fixing holes M5

With lamp safety catch

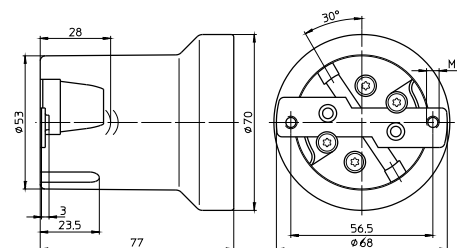
Weight: 252.8 g, unit: 48 pcs.

Type: 12812

**Ref. No.: 108373**

With steel thread

**Ref. No.: 532606**



7

8

E40 lampholders

Only for lamps with base E40/E45

Casing: porcelain, white, T270

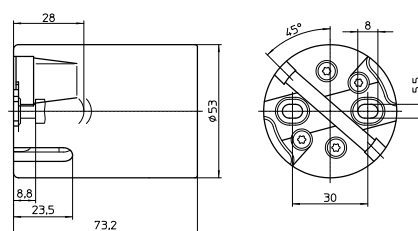
Oblong holes for screws M5

Weight: 206 g, unit: 50 pcs.

Type: 12900/12901

**Ref. No.: 528252**

**Ref. No.: 528958** with lamp safety catch



9

10