

Ballasts ferromagnétiques 5 à 58 W

230 V, 50 Hz

Pour lampes fluorescentes

tubulaires et compactes

Dimensions: 28 x 41 mm

Imprégnation sous vide avec résine polyester

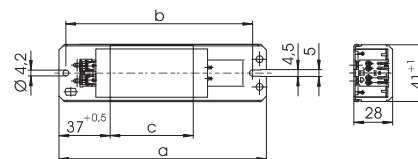
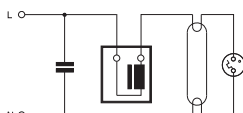
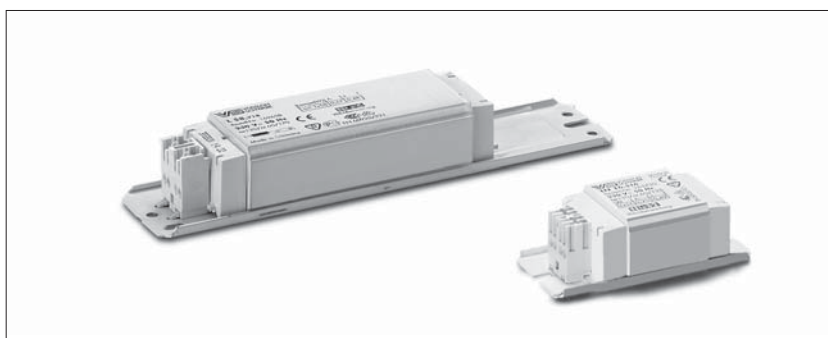
Bornes à visser: 0,5-2,5 mm² (sur demande)

Bornes à insert: 0,5-1 mm²

tw 130

Classe de protection I

EEI = B2



| Lampe | | | | Ballast | | | | | | | | | | Compensation | | U.E. pièces |
|---|-----------|----------------|---------------|---------------|---------------|------------------|---------|---------|---------|-------------|---------------------------------|----------------------|---------------|--------------|--|----------------|
| Puissance W | Type | Culot | Courant mA | Type | Réf. No. | Dimensions mm | a mm | b mm | c mm | Poids kg | $\Delta t / \Delta t_{on}$ K | C _p µF | Courant mA | | | |
| Ballasts standards pour lampes fluorescentes | | | | | | | | | | | | | | | | |
| 1x18 | T8 | G13 | 370 | LN 18.114 | 508183 | 28x41 | 155 | 140 | 60 | 0,55 | 55/110 | 4,5 | 120 | 10 | | |
| 1x30 | T8 | G13 | 365 | LN 30.801 | 169645 | 28x41 | 155 | 140 | 60 | 0,55 | 55/110 | 4,5 | 180 | 10 | | |
| 1x36 | T8 | G13 | 430 | LN 36.115 | 508185 | 28x41 | 155 | 140 | 60 | 0,55 | 55/150 | 4,5 | 210 | 10 | | |
| 1x58 | T8 | G13 | 670 | LN 58.116 | 508186 | 28x41 | 195 | 180 | 92 | 0,80 | 55/160 | 7,0 | 320 | 10 | | |
| Ballasts standards pour lampes fluorescentes compactes | | | | | | | | | | | | | | | | |
| 1x5,7,9,11 | TC-S | G23 | 180 | LN 7/9/11.307 | 163694 | 28x41 | 85 | 75 | 34 | 0,32 | 60/85 | 2,0 | 50 | 10 | | |
| 1x13 | TC-D | G24d-1/GX24d-1 | 175 | LN 13.313 | 163711 | 28x41 | 85 | 75 | 34 | 0,32 | 55/80 | 2,0 | 80 | 10 | | |
| 1x18 | TC-D/TC-T | G24d-2/GX24d-2 | 220 | LN 18.319 | 163763 | 28x41 | 85 | 75 | 34 | 0,32 | 60/140 | 2,0 | 120 | 10 | | |
| 1x26 | TC-D | G24d-3/GX24d-3 | 325 | LN 26.813 | 509502 | 28x41 | 110 | 100 | 45 | 0,41 | 55/145 | 3,5 | 140 | 10 | | |