



# BROOKLYN BASE

H100



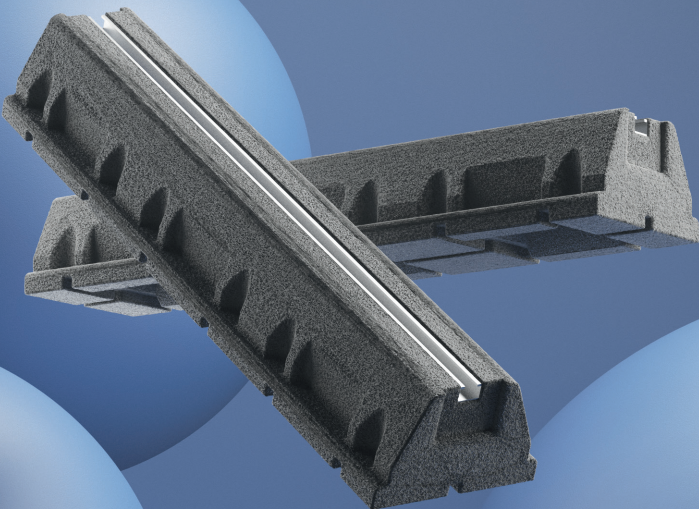
SBR

Al



100<-500 KG

**TIRAN**  
SUPPORT SYSTEMS



2 EMME CLIMA

Available version with 3 supports  
Supplied with no boxes and no bolts

[UK]  
GROUND BASE MADE FROM SBR RECYCLED  
RUBBER AND ALUMINIUM STRUT.

41x21 mm			
C-872*	L250xH95xP150 mm	270pcs	100* kg
C-874*	L400xH95xP150 mm	180pcs	200* kg
C-876*	L600xH95xP150 mm	120pcs	500* kg
C-870*	L1000xH95xP150 mm	60pcs	500* kg

NEW

MOQ: 4 pallets Load capacity per piece