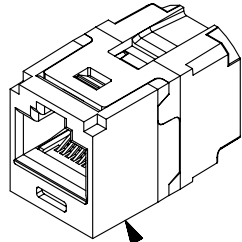


THIS COPY IS PROVIDED ON A RESTRICTED BASIS AND IS NOT TO BE USED IN ANY WAY DETRIMENTAL TO THE INTERESTS OF PANDUIT CORP.

A

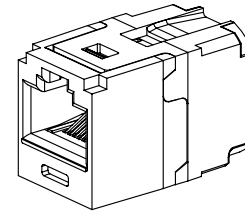
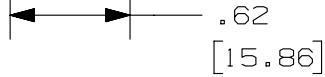
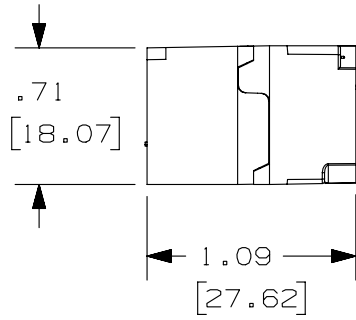
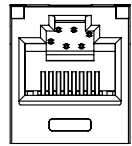
PANDUIT PART#	COLOR	DESCRIPTION	WEIGHT
CC688BL CC688IW CC688GR CC688BU CC688OR	BLACK INT. WHITE GREEN BLUE ORANGE	MINI-COM CATEGORY 6 COUPLER MODULE	1.36 LB/100 PCS (616g/100 PCS)



COUPLER MODULE

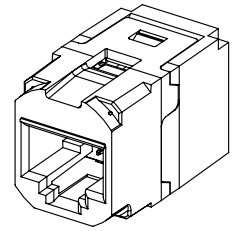
NOTES:

- CATEGORY 6/CLASS E 8-POSITION FEMALE-TO-FEMALE COUPLER MODULE
- MATERIAL:
MODULE HOUSING - UL94-V0 ABS
MODULE CIRCUIT BOARD - GLASS REINFORCED EPOXY RESIN
MODULE CONTACT CARRIER - UL94-V0 ABS
- DIMENSIONS IN PARENTHESES ARE IN METRIC.
- COMPATIBLE WITH ALL PANDUIT MINI-COM FACEPLATES AND MODULAR PATCH PANELS. NOT COMPATIBLE WITH SURFACE MOUNT BOXES.
- ACTS AS A SINGLE CONNECTOR IN CATEGORY 6/CLASS E CHANNELS
- c(UL)US LISTED FILE NUMBER E129886
- ALSO AVAILABLE AS 24-PORT COUPLER PATCH PANEL, PART NUMBER CP24688BL.



FRONT

ACTUAL SIZE



REAR

PART NUMBER CC688**	
TITLE MINI-COM CAT6 COUPLER MODULE	
CUSTOMER DRAWING	
ITEM REVISION NAME M02731CD/01	
DATASET FILE NAME M02731CD_DC11/01B	
UNLESS OTHERWISE SPECIFIED, DIMENSIONAL TOLERANCES ARE: IN [mm]	
.x ± .xx ± .03 [.8]	.xxx ± .010 [.3] ANGLES ±
THIRD ANGLE PROJECTION	
MATERIAL: SEE NOTE 2	
DRAWING NUMBER: 02731-11	
DRAWN BY NER	DATE 7-25-07
CHK CEF	SCALE FULL
SHT 1 OF 1	
SIZE A	

REV	DATE	BY	CHK	APR	DESCRIPTION	ECN
02	6-20-14	MDJR	REFR	EJH	A. ADDED PART NUMBERS FOR GREEN, BLUE, AND ORANGE COLORS.. REMOVED PREVIOUS REVISIONS FOR CLARITY.	02731-11

D10100DA/14

2

1