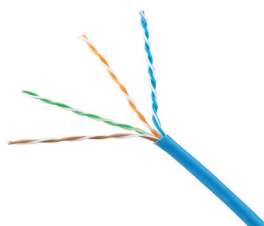


NetKey® Category 6 UTP Copper Cable

Category 6 UTP copper cable meets ANSI/TIA-568-C.2 Category 6 and ISO 11801 Class E channel standards. The conductors are 24 AWG copper insulated with HDPE polymer. The copper conductors are twisted in pairs and covered by a low smoke zero halogen or flame-retardant PVC (CM or CMR) jacket.



technical information

| | |
|--------------------------------|--|
| Electrical performance: | Certified channel performance in a 4-connector configuration up to 100 meters and meets the requirements of ANSI/TIA-568-C.2 Category 6 and ISO 11801 Class E channel standards at swept frequencies up to 250 MHz |
| Conductor/insulator: | 24 AWG solid copper insulated with HDPE |
| Insulation diameter: | .88mm - .98mm (.0346 in - .0385 in) |
| Flame rating: | LSZH — IEC 60332-1, IEC 60754-1 and -2, IEC 61034-2, EN50575: Euroclass Eca CM — UL 1685; EN50575: Euroclass Eca CMR — UL 1666 |
| PoE compliance: | Meets IEEE 802.3af and IEEE 802.3at for PoE applications |
| Installation tension: | 110 N (25 lbf) maximum |
| Temperature rating: | 0°C to 50°C (32°F to 122°F) during installation -20°C to 75°C (-4°F to 167°F) during operation |
| Cable jacket: | LSZH — Low Smoke Zero Halogen CM — PVC CMR — Flame-retardant PVC |
| Cable diameter: | 5.2mm (0.204 inch) nominal |
| Cable weight | 10 kg/305m (22 lbs./1000 ft.) |
| Packaging: | 305m (1000 ft.) easy-payout box Package tested to ISTA Procedure 1A |

key features and benefits

| | |
|---|---|
| Third party tested | Cable has been tested as part of the NetKey® Category 6 UTP Copper Cabling System by an independent laboratory and complies with the electrical channel requirements of ANSI/TIA-568-C.2 Category 6 and ISO 11801 Class E standards |
| Reduced cable diameter | For improved installation and termination |
| Descending length cable markings | Easy identification of remaining cable reduces installation time and cable scrap |
| Easy payout box | Ensures proper performance and provides quick installation |

applications

Applications include:

- Ethernet 10BASE-T, 100BASE-T (Fast Ethernet), and 1000BASE-T (Gigabit Ethernet)
- 155 Mb/s ATM, 622 Mb/s ATM, 1.2 Gb/s ATM
- Token ring 4/16

www.panduit.com

PANDUIT®

SPECIFICATION SHEET

NetKey® Network Components

NetKey® UTP Copper Cable

| | |
|--------------|----------------|
| LSZH: | NUL6CR04BU-CE* |
| CM: | NUC6CR04BU-CE* |
| CMR: | NUR6CR04BU-CE* |

NetKey® Category 6 UTP

Jack Module

| | |
|---------------------|------------|
| Jack module: | NK688MIW** |
|---------------------|------------|

NetKey® Category 6 UTP

Patch Cords — CM

| | |
|-----------------------|-----------|
| Foot lengths: | NK6PC3^Y |
| Meter lengths: | NK6PC1M^Y |

NetKey® Category 6

Punchdown Patch Panels

| | |
|-----------------------|------------|
| 12-port: | NK6PPG12WY |
| 24-port, 1 RU: | NK6PPG24Y |
| 48-port, 2 RU: | NK6PPG48Y |

NetKey® Category 6 All Molded

Punchdown Patch Panels

| | |
|-----------------------|----------|
| 24-port, 1 RU: | NK6PP24P |
| 48-port, 2 RU: | NK6PP48P |

NetKey® Flush Mount Modular

Patch Panels

| | |
|--|------------|
| Angled, 24-port, 1RU: | NKPPA24FMY |
| Angled, 48-port, 2RU: | NKPPA48FMY |
| Flat, 24-port, 1RU: | NKPP24FMY |
| Flat, 48-port, 2RU: | NKPP48FMY |

NetKey® All Molded Modular

Patch Panels

| | |
|-----------------------|---------|
| 24-port, 1 RU: | NKPP24P |
| 48-port, 2 RU: | NKPP48P |

Termination and Cable Prep Tools

JackRapid™

Termination

| | |
|--------------|----------|
| Tool: | JR-PAN-2 |
|--------------|----------|

Conductor

| | |
|-----------------------|------|
| snipping tool: | CWST |
|-----------------------|------|

Conductor

| | |
|------------------------|-------|
| stripping tool: | CJAST |
|------------------------|-------|

*For standard cable colors other than BU (Blue), replace BU in part number with WH (White), IG (International Gray), or VL (Violet). (Violet available for NUL6CR04**-CE only.) Contact customer service for region availability. Available in European pallets of 14 cartons per pallet.

**For standard colors other than Off White (IW), replace suffix with EI (Electric Ivory), IG (International Gray), WH (White), BL (Black), BU (Blue), RD (Red), YL (Yellow), GR (Green), or VL (Violet). Add -Q to end of part number for 25-pack convenience package.

^For standard foot lengths other than 3 feet, replace the 3 in the part number with 5, 7, 10, 14, or 20. For standard color other than Off White, add suffix BU (Blue), RD (Red), YL (Yellow), or GR (Green) before the Y at the end of the part number. For example, the part number for a blue, Category 6, 5-foot patch cord is NK6PC5BUY.

^^For standard meter lengths other than 1 meter, replace the 1 in the part number with 2, 3, 4, or 5. For standard colors other than Off White, add suffix BU (Blue), RD (Red), YL (Yellow), or GR (Green) before Y at the end of the part number. For example, the part number for a blue, Category 6, 5-meter patch cord is NK6PC5MBUY.

Fluke JackRapid™ Termination Tool available through distribution. To locate the local office, visit www.flukenetworks.com/contact.

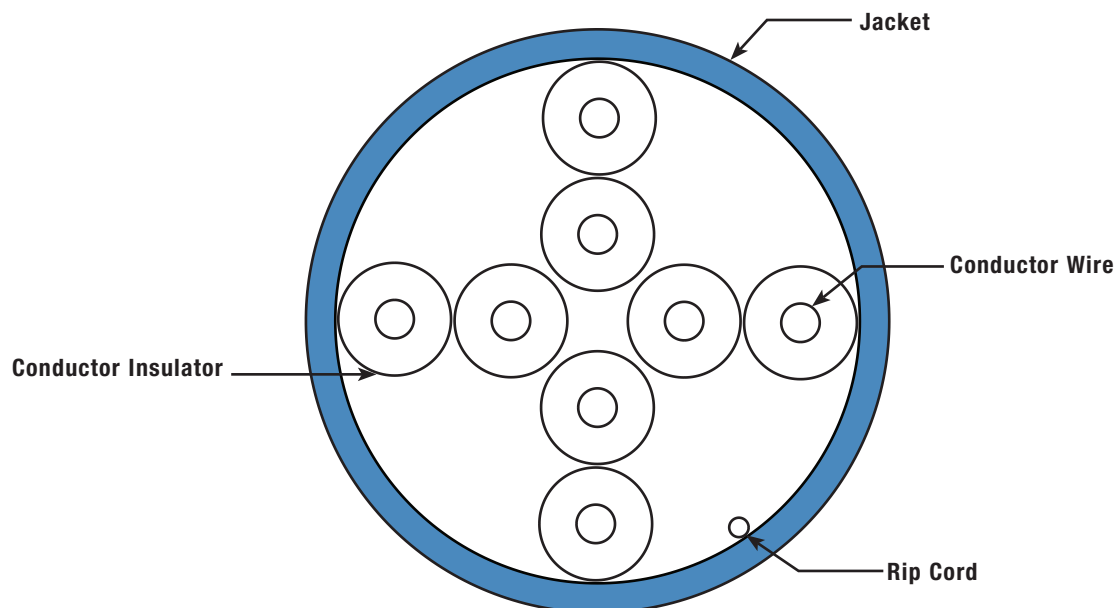
JackRapid™ is a trademark of Fluke Networks.

NetKey® Category 6 UTP Copper Cable

additional specifications

| Mechanical Test | |
|---------------------------------------|--------------------|
| Ultimate Breaking Strength | >400 N (90 lbf) |
| Minimum Bend Radius | 4 x cable diameter |
| Electrical Test | |
| Nominal Velocity of Propagation (NVP) | 65% |
| Operating Voltage, Maximum | 80V |

cable construction



WORLDWIDE SUBSIDIARIES AND SALES OFFICES

PANDUIT CANADA
Phone: 800.777.3300

PANDUIT EUROPE LTD.
London, UK
cs-emea@panduit.com
Phone: 44.20.8601.7200

PANDUIT SINGAPORE PTE. LTD.
Republic of Singapore
cs-ap@panduit.com
Phone: 65.6305.7575

PANDUIT JAPAN
Tokyo, Japan
cs-japan@panduit.com
Phone: 81.3.6863.6000

PANDUIT LATIN AMERICA
Guadalajara, Mexico
cs-la@panduit.com
Phone: 52.33.3777.6000

PANDUIT AUSTRALIA PTY. LTD.
Victoria, Australia
cs-aus@panduit.com
Phone: 61.3.9794.9020

For a copy of Panduit product warranties, log on to www.panduit.com/warranty

For more information

Visit us at www.panduit.com

Contact Customer Service by email: cs@panduit.com
or by phone: 800.777.3300

PANDUIT®

© 2018 Panduit Corp.
ALL RIGHTS RESERVED.
NKDS26--WW-ENG
Replaces WW-NKDS25
7/2018