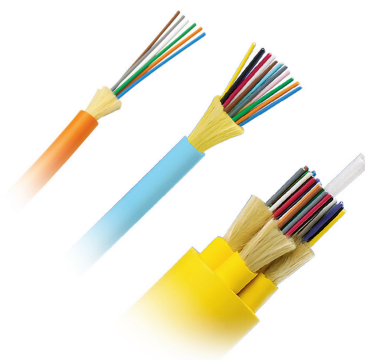


## technical information

Opti-Core™ Fibre Optic Indoor Cable is an integral part of the Panduit end-to-end fibre optic solution, designed to support today's data needs while meeting tomorrow's ever-advancing network requirements. These fibre optic indoor cables are used within buildings to provide high-density connectivity and ease of installation. Applications include intra-building backbones, routing between telecommunications rooms and connectorised cables that require Low Smoke Zero Halogen (LSZH) ratings. Opti-Core™ 10 GbE Fibre Optic Indoor Cable features the highest quality OM3 and OM4 laser optimised fibre to support 10 Gb/s applications while maintaining compatibility with existing 50µm multimode systems. Standard singlemode and multimode indoor cable is available in fibre counts from 4 to 72 fibres. Larger distribution cable features a 6 fibre per sub-unit design that simplifies fibre identification, provides easy access and routing of the fibres and increases cable durability with a dielectric central strength member.



## application

For indoor use in intra-building backbone and horizontal installations.

## standards

ISO 11801  
EN 60794-2-20  
IEC 60794-2-20

EuroClass: Dca s2 d2 a1  
Eca

## construction

Central strength member	2-24-fibre -None 36-72-fibre- FRP
Tight Buffer	PBT
Water blocking	None
Wrapping	2-24-fibre- None 36-72-fibre- Polyester
Sheath	LSZH/LSHF-FR/FRNC according to EN50290-2-27

## fire ratings

IEC 60332-1-2  
IEC 60332-3-24  
IEC 60754-2  
IEC 61034  
Conforms to: NBN C30-004 F2, SA, SD

# Opti-Core™ Fibre Optic Indoor Distribution Cable – EMEA

## mechanical properties

<b>Tensile strength (Long Term)</b>	< 8-fibre: 280 N Max 16-fibre: 340 N Max 24-fibre: 1100 N Max 36-fibre: 1200 N Max 48-fibre: 1400 N
<b>Tensile strength (Installation)</b>	< 8-fibre: 1000N Max 16-fibre: 1200 N Max 24-fibre: 3300 N Max 36-fibre: 3600 N Max 48-fibre: 4200 N
<b>Max Installation load</b>	2-24-fibre: 1000 N-1500 N depending on fibre count 36-72-fibre: 3300 N-6600 N depending on fibre count
<b>Compressive strength (crush)</b>	3000 N/ 100 mm
<b>Impact</b>	20 J
<b>Torsion</b>	5 cycles ±1 turn
<b>Kink</b>	Pass
<b>Temperature range</b>	Installation: -20°C to +70°C Operation: -20°C to +70°C Storage: -40°C to +70°C (2-24-fibre) Storage: -20°C to +70°C (36-96-fibre)

## physical properties

Fibre Count	Cable O.D. (mm)	Installation Bend Radius (mm)	Long Term Bend Radius (mm)	Cable Weight (kg/km)
2	4.5 mm	100 mm	50 mm	21 kg/km
4	5 mm	100 mm	50 mm	26 kg/km
6	5.5 mm	100 mm	50 mm	30 kg/km
8	6 mm	100 mm	50 mm	35 kg/km
12	6.5 mm	130 mm	75 mm	45 kg/km
24	8 mm	230 mm	115 mm	65 kg/km
36	12.5 mm	150 mm	150 mm	165 kg/km
48	14.5 mm	200 mm	220 mm	230 kg/km
72	20 mm	200 mm	300 mm	375 kg/km

# Opti-Core™ Fibre Optic Indoor Distribution Cable – EMEA

## fibre colour code 2-24 fibres

1 Red	13 Yellow w/ mark every 70 mm
2 Green	14 White w/ mark every 70 mm
3 Blue	15 Grey w/ mark every 70 mm
4 Yellow	16 Turquoise w/ mark every 70 mm
5 White	17 Orange w/ mark every 70 mm
6 Grey	18 Pink w/ mark every 70 mm
7 Brown	19 Yellow w/ mark every 35 mm
8 Violet	20 White w/ mark every 35 mm
9 Turquoise	21 Grey w/ mark every 35 mm
10 Black	22 Turquoise w/ mark every 35 mm
11 Orange	23 Orange w/ mark every 35 mm
12 Pink	24 Pink w/ mark every 35 mm

## fibre colour code 36-72 fibres

1 6 tightly buffered fibres 900µm +/- 50µm
1 Red
2 Green
3 Blue
4 Yellow
5 White
6 Grey

## ordering information

\*Example: FADC912-37 Fibre, Distribution, Low Smoke Zero Halogen, OM4, 4-fibre

Character	1	2	3	4	5	6	7	8	9	10
Example	F	A	D	C	9	1	2	-	3	7
<b>1 and 2 – Fibre Product</b>					<b>5 – Fibre Type</b>			<b>8 – Dash</b>		
FA = Fibre					9 = OS2 9/125µm			<b>9 and 10 - EuroClass Code</b>		
<b>3 – Cable Construction</b>					5 = OM2 50/125µm			37: Dca s2 d2 a1		
D- Indoor Distribution Central Tube (up to 12 fiber)					6 = OM1 62.5/125µm			40- Eca		
E- Indoor Distribution Stranded Tube (24 fiber and up)					X = OM3 10 GbE 50/125µm					
I- Interconnect zipcord cable (only 2 fibre)					Z = OM4 10 GbE 50/125µm					
<b>4 – Flame Rating</b>					<b>6 and 7 – Fibre Count</b>					
C = EuroClass Rated					02 = 2-fibre 24 = 24-fibre					
					04 = 4-fibre 36 = 36-fibre					
					06 = 6-fibre 48 = 48-fibre					
					08 = 8-fibre 72 = 72-fibre					
					12 = 12-fibre					

### WORLDWIDE SUBSIDIARIES AND SALES OFFICES

PANDUIT US/CANADA  
Phone: 800.777.3300

PANDUIT EUROPE LTD.  
London, UK  
EMEA-CustomerService@panduit.com  
Phone: 44.20.8601.7200

PANDUIT SINGAPORE PTE. LTD.  
Republic of Singapore  
cs-ap@panduit.com  
Phone: 65.6305.7575

PANDUIT JAPAN  
Tokyo, Japan  
cs-japan@panduit.com  
Phone: 81.3.6863.6000

PANDUIT LATIN AMERICA  
Guadalajara, Mexico  
cs-la@panduit.com  
Phone: 52.33.3777.6000

PANDUIT AUSTRALIA PTY. LTD.  
Victoria, Australia  
cs-aus@panduit.com  
Phone: 61.3.9794.9020

For a copy of Panduit product warranties, log on to [www.panduit.com/warranty](http://www.panduit.com/warranty)

For more information

Visit us at [www.panduit.com](http://www.panduit.com)

Contact Customer Service by email: [cs@panduit.com](mailto:cs@panduit.com)  
or by phone: 800.777.3300

**PANDUIT**™

©2018 Panduit Corp.  
ALL RIGHTS RESERVED.  
FBDS16--WW-UKE  
Replaces FBDS25--WW-UKE  
8/2018