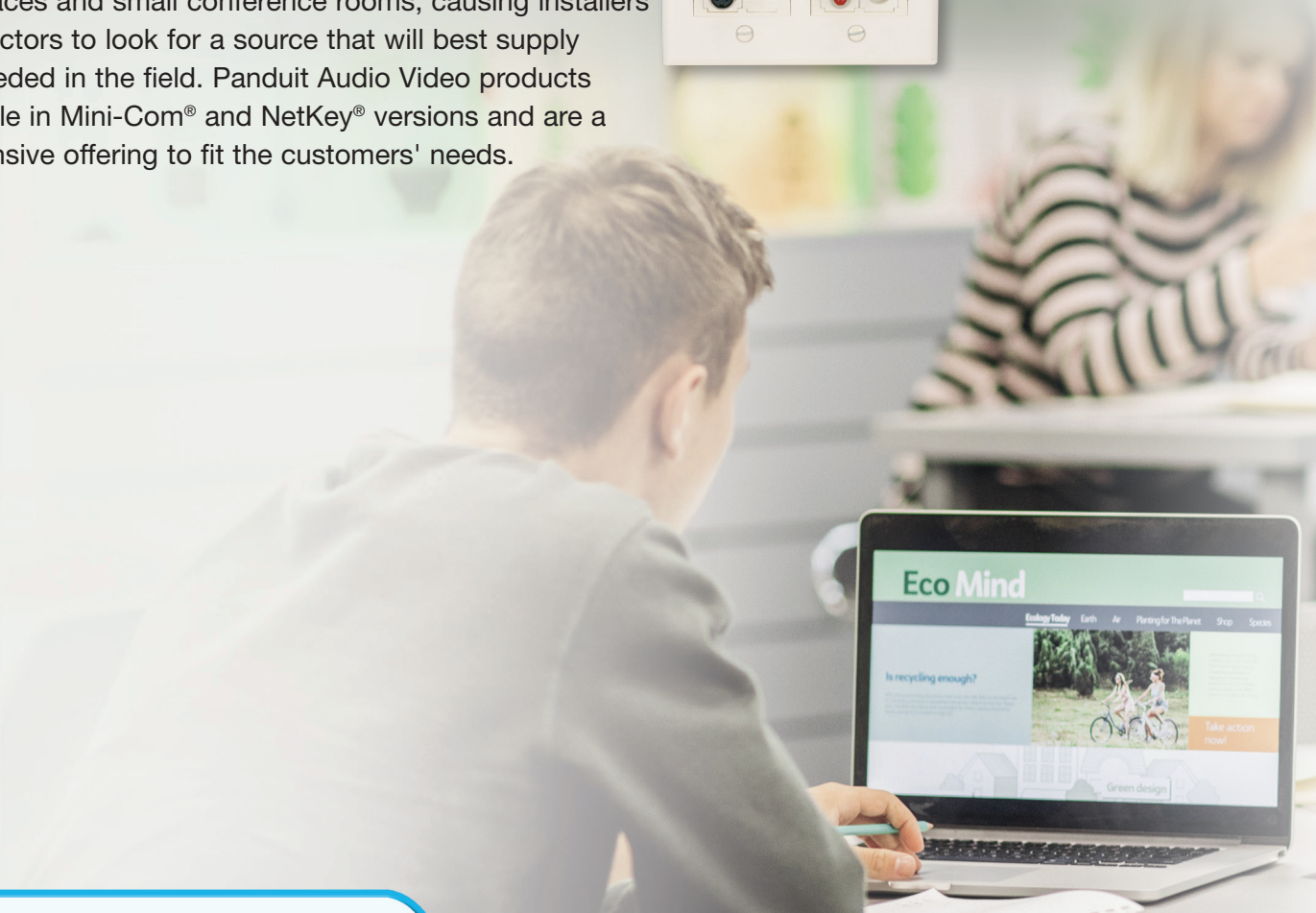




Audio Video Faceplate Selection Guide

Panduit® Audio/Video Products

The Audio Video industry is constantly evolving and adding new technology to the market. This technology typically requires unique products or solutions to help deliver the best performance. Audio Video systems are becoming more integrated with connectivity installations in K-12 classrooms, huddle spaces and small conference rooms, causing installers and contractors to look for a source that will best supply what is needed in the field. Panduit Audio Video products are available in Mini-Com® and NetKey® versions and are a comprehensive offering to fit the customers' needs.



Mini-Com® Audio Video Offering

Pages 4-5



NetKey® Keystone Audio/Video Offering

Pages 6-7



Customized Applications

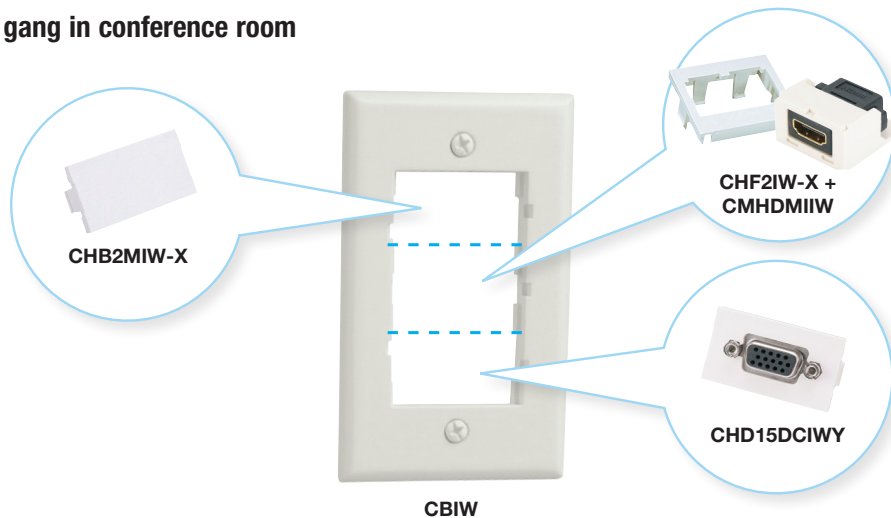
Panduit's modular faceplates allows you to mix and match modules and inserts with faceplates for customized applications.

Step 1: Choose your faceplate frame

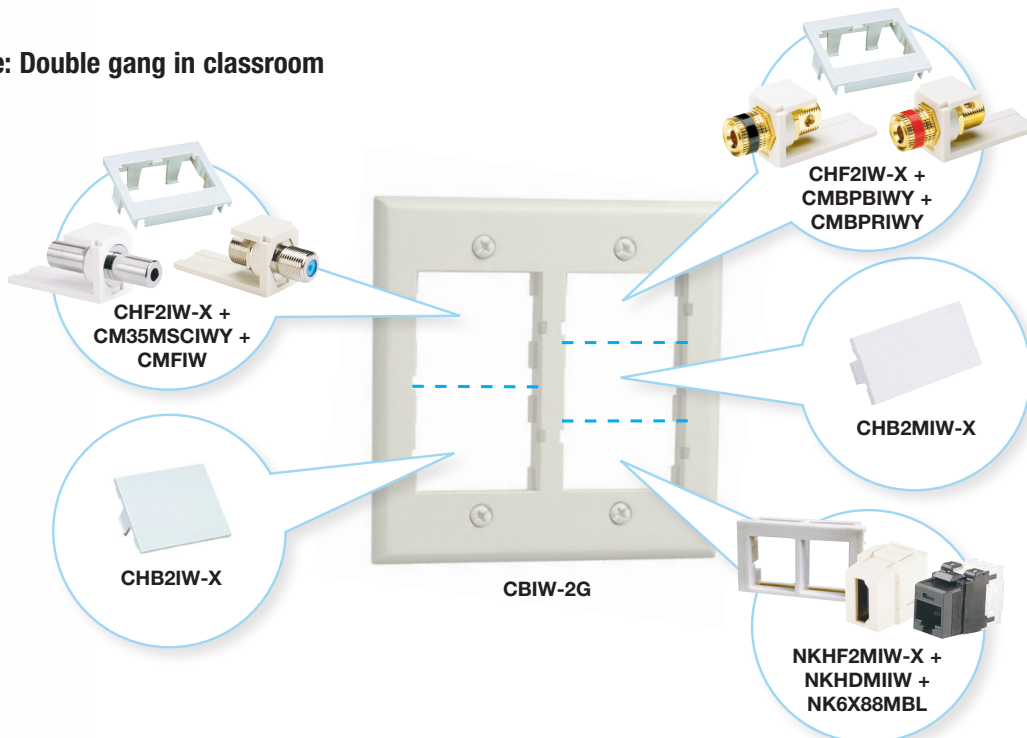
Step 2: Populate Mini-Com® or NetKey® Inserts with two, 1-position modules or one, 2-position modules. Fill in with blanks where needed to reserve space for future use.

Step 3: Choose Mini-Com® Inserts, NetKey® Inserts, Populated AV Inserts or Blank Inserts

Example: Single gang in conference room



Example: Double gang in classroom



Mini-Com® Audio Video Offering

The audio/video industry is constantly evolving and adding new technology to the market. This technology typically requires unique products or solutions to help deliver the best performance. Audio Video systems are becoming more integrated with connectivity installations causing installers and

contractors to look for a source that will best supply what is needed in the field. Panduit Audio Video products are available in Mini-Com® and NetKey® versions and are a comprehensive offering to fit the customers' needs.



Part Number	Description	Color*
Mini-Com® USB Module		
CMUSBAAIW	USB 2.0 female A to female A 1-position insert coupler module.	Off White
USB Blockout devices also available. See www.panduit.com for more information.		
Mini-Com® HDMI and HDMI w/pigtail Modules		
CMHDMIW	HDMI 2.0 Type A female to female coupler, 2-position module.	Off White
CMHDMITIW	HDMI 1.4 Coupler Module with pigtail, 2-position module.	Off White
Mini-Com® F-Type Modules		
CMFIW	Module supplied with 3GHz standard F-type 1-position insert coupler module.	Off White
CMFSRIWY	Module supplied with 75 ohm self-terminating F-type 1-position insert coupler.	Off White
Mini-Com® RCA 110 Punchdown Modules		
CJRYIW	Module supplied with one RCA 1-position insert connector with yellow insert.	Off White
CJRRIW	Module supplied with one RCA 1-position insert connector with red insert.	Off White
CJRWIW	Module supplied with one RCA 1-position insert connector with white insert.	Off White
Mini-Com® RCA Pass-Through Modules		
CMRPRIW	Module supplied with one RCA pass-through coupler with red insert.	Off White
CMRPYIW	Module supplied with one RCA pass-through coupler with yellow insert.	Off White
CMRPWIW	Module supplied with one RCA pass-through coupler with white insert.	Off White
Mini-Com® 15-Pin High-Density D-Subminiature Module and Base		
CMD15HDIWY	2-position module supplied with one 15-pin DB connector mounted to a printed circuit board; terminates on site.	Off White
Mini-Com® 3.5mm Stereo Connector and Coupler Modules		
CM35MSCIWY	3.5mm stereo 1-position coupler module.	Off White
CM35MSSIW	Module supplied with one 3.5mm (1/8") stereo headset solder-type connector.	Off White
Mini-Com® 5-Way Binding Post Modules		
CMBPBIWY^	1-position module supplied with one 5-way binding post with black stripe.	Off White
CMBPRIWY^	1-position module supplied with one 5-way binding post with red stripe.	Off White

*For other colors replace suffix IW (Off White) with EI (Electric Ivory), WH (White), IG (International Gray), or BL (Black).

Mini-Com® Audio Video Offering (continued)



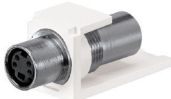
CMBA75IWY



CMBAIWY



CJSVIW



CMSVCIWY



CMBRS485OR



CHD9CIWY



CHD15HDCIWY



CHD15HDSCIWY



CMBIW-X



CBIW-2G



CBIW



CBEIW-2GY



CBEIWY



CFG2IW

Part Number	Description	Color*
-------------	-------------	--------

Mini-Com® BNC Coax Coupler Modules

CMBA75IWY	Module supplied with 75 ohm industry standard BNC coupler.	Off White
CMBAIWY	Module supplied with 50 ohm industry standard BNC coupler.	Off White

Mini-Com® S-Video Modules

CJSVIW	Module supplied with one S-Video punchdown connector.	Off White
CMSVCIWY	1-position module supplied with one S-Video pass-through coupler.	Off White

Mini-Com® BAS Connector Module

CMBRS485OR**	2-position module supplied with 22 AWG min/18 AWG max connector.	Off White
--------------	--	-----------

D-Subminiature Inserts

CHD9CIWY	1/3 insert with 9-pin female to female 2-position coupler. Does not require frame insert	Off White
CHD15HDCIWY	1/3 insert with 15-pin high density female to female 2-position coupler, SVGA capable. Does not require frame insert	Off White
CHD15HDSCIWY	1/3 insert with one 15-pin DB 2-position connector mounted to a printed circuit board; terminates on site; SVGA capable. Does not require frame insert	Off White

Mini-Com® Blank Module

CMBIW-X	Blank module reserves space for future use.	Off White
---------	---	-----------

Faceplate Frames

CBIW	Single gang faceplate frame accepts two 1/2 size module inserts or three 1/3 size module inserts.	Off White
CBIW-2G	Double gang faceplate frame accepts up to four 1/2 size module inserts or six 1/3 size module inserts.	Off White
CBEIWY	Single gang faceplate frame accepts up to two 1/2 size module inserts or three 1/3 size module inserts. Supplied with labels and label cover/screw covers.	Off White
CBEIW-2GY	Double gang faceplate frame which accepts up to four 1/2 size module inserts or six 1/3 size module inserts. Supplied with labels and label cover/screw covers.	Off White
CHBHIW	Hooded Insert, off white	Off White

GFCI Faceplates and Inserts

CFGBIW	Brush Insert, off white	Off White
CPGIW	Single Gang Rectangular Faceplate	Off White
CPGIW-2G	Double Gang Rectangular Faceplate	Off White

NetKey® Keystone Audio/Video Offering

NetKey® Audio Video modules feature the universal “keystone” design and are compatible with a wide assortment of modular patch panels and faceplates offering to fit the customers’ needs.



CHS2SIW-X



CHF2IW-X



CHB2MIW-X



CJ6X88TGBL



NKHDMIW



NKUSBAIW



NKFIW



NKSVCIW



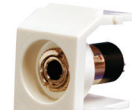
NKSPMIW



NKBPRIW



NKBPIWY



NK35MSSIW



NK35MSCIW



NKBNCMIWY

Part Number	Description	Color*
Mini-Com® Inserts		
CFG4IW	Mini-Com® Four Module Rectangular Adapter	Off White
CFG2IW	Mini-Com® Two Module Rectangular Adapter	Off White
CHS2SIW-X	Two module space, 1/2-size, sloped shuttered insert accepts two Mini-Com® Modules.	Off White
CHS2IW-X	Two module space, 1/2-size, sloped insert accepts two Mini-Com® Modules.	Off White
CHF2IW-X	Two module space, 1/2-size, flat insert accepts two Mini-Com® Modules.	Off White
CHF2MIW-X	Two module space, 1/3-size, flat insert accepts two Mini-Com® Modules.	Off White
CHB2IW-X	1/2-size blank insert reserves space for future upgrades.	Off White
CHB2MIW-X	1/3-size blank insert reserves space for future upgrades.	Off White

Mini-Com HDBaseT and Data Jack Modules

CJ6X88TGBL	Category 6A, RJ45, 8-position, 8-wire universal jack module.	Black
CJSH6X88TGY	Category 6A, RJ45 8-position, 8-wire shielded spring shuttered universal jack module.	Black

*For other colors replace suffix IW (Off White) with EI (Electric Ivory), WH (White), IG (International Gray), or BL (Black). ^For other colors replace suffix IW (Off White) with EI (Electric Ivory), or WH (White).

Keystone Modules

NKHDMIW	Keystone HDMI 2.0 Type A female to female coupler module.	Off White
NKUSBAAIW	Keystone USB 2.0 female A to female A coupler module. Not compatible with shuttered adapters or inserts.	Off White
NKFIW	Keystone module supplied with 75 ohm industry standard F-Type coax bulkhead coupler	Off White
NKSVCIW	Keystone module supplied with S-Video pass-through connector	Off White
NKSPMIW	Keystone module supplied with SVHS punchdown connector	Off White

Keystone 5-way Binding Posts

NKBPRIWY^	Keystone module supplied with 5-way binding post with red insert	Off White
NKBPIWY^	Keystone module supplied with 5-way binding post with black insert.	Off White

Keystone Stereo Coupler Module

NK35MSSIW	Keystone module supplied with 3.5mm (1/8") stereo solder type headset coupler	Off White
NK35MSCIW	Keystone module supplied with 3.5mm (1/8") stereo headset coupler.	Off White

Keystone Coax Coupler

NKBNCMIWY	Keystone module supplied with 50 ohm industry standard coax bulkhead coupler.	Off White
-----------	---	-----------

NetKey® Keystone Audio/Video Offering (continued)



NKRPMWIW



NKRPMYIW



NKRPMRIW



NKRSMWIWY



NKRSMYIWY



NKRSMRIWY



NKRSMBIWY



NKRTMYIW



NKRTMRIW



NKRTMWIW



NKRTMRIW



CHR3RGBIW



NKHS2IW-X



NKHS2SIW-X



NKHS2IW-X



NKHF2MIW-X



NK6X88MBL



NKBMIW-X

Part Number	Description	Color*
-------------	-------------	--------

Keystone RCA Punchdown Connectors

NKRPMWIW	Keystone module supplied with RCA punchdown connector with white insert.	Off White
NKRPMYIW	Keystone module supplied with RCA punchdown connector with yellow insert.	Off White
NKRPMRIW	Keystone module supplied with RCA punchdown connector with red insert.	Off White

Keystone RCA Solder-type Connectors

NKRSMWIWY	Keystone module supplied with RCA solder type connector with white insert.	Off White
NKRSMYIWY	Keystone module supplied with RCA solder type connector with yellow insert.	Off White
NKRSMRIWY	Keystone module supplied with RCA solder type connector with red insert.	Off White
NKRSMBIWY	Keystone module supplied with RCA solder type connector with black insert.	Off White

Keystone RCA Pass-through Connectors

NKRTMYIW	Keystone 1-position module supplied with RCA pass-through connector with yellow insert.	Off White
NKRTMWIW	Keystone 1-position module supplied with RCA pass-through connector with white insert.	Off White
NKRTMRIW	Keystone 1-position module supplied with RCA pass-through connector with red insert.	Off White
CHR3RGBIW	1/3 insert with three RCA pass-through couplers. RCA insert colors are Red, Green and Blue. R,G,B components video.	Off White
CHR3WYRIW	1/3 insert with three RCA pass-through couplers. RCA insert colors are White, Yellow and Red. Composite video and left and right stereo.	Off White

*For other colors replace suffix IW (Off White) with EI (Electric Ivory), WH (White), IG (International Gray), or BL (Black).

^ For other colors replace suffix IW (Off White) with EI (Electric Ivory), or WH (White).

NetKey® Keystone Faceplate Inserts

NKHS2SIW-X	Two module space, 1/2-size sloped shuttered modular insert. Accepts two NetKey® Modules.	Off White
NKHS2IW-X	Two module space, 1/2-size sloped modular insert. Accepts two NetKey® Modules.	Off White
NKHF2MIW-X	Two module space, 1/3-size flat modular insert. Accepts two NetKey® Modules.	Off White
NKG4IW	NetKey® Four Module Rectangular Adapter	Off White
NKG2IW	NetKey® Two Module Rectangular Adapter	Off White

NetKey® Keystone Blank Module

NKBMIW-X	Blank keystone module reserves space for future use.	Off White
----------	--	-----------

NetKey® Keystone HDBaseT and Data Jack Module

NK6X88MBL	Category 6A, 8-position, 8-wire keystone punchdown jack module.	Black
-----------	---	-------

*For other colors replace suffix IW (Off White) with EI (Electric Ivory), WH (White), IG (International Gray), or BL (Black). All faceplate frames supplied with mounting screws.



PANDUIT[®]

Panduit Corp.
World Headquarters
Tinley Park, IL 60487

800.777.3300

www.panduit.com