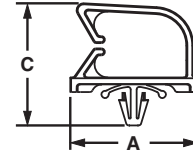
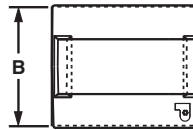
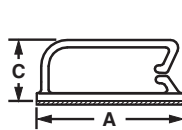
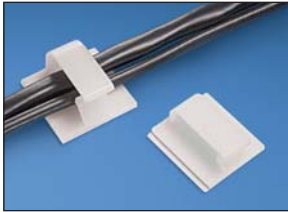


## Bevel Entry Clips

- Beveled entry allows for easy insertion of cable bundle
- Rubber-based adhesive provides a strong and reliable bond



BEC

BECP

Part Number	Max. Bundle Diameter		Length A		Width B		Height C		Material	Color	Mounting Method	Std. Pkg. Qty.	Std. Ctn. Qty.
	In.	mm	In.	mm	In.	mm	In.	mm					

### Adhesive Backed

<b>BEC38-A-L</b>	0.38	9.6	1.46	37.1	1.24	31.5	0.52	13.2	Nylon 6.6	Natural	Rubber Adhesive	50	500
<b>BEC38-A-L20</b>									Nylon 6.6	Black	Rubber Adhesive	50	500
<b>BEC38-AT-L0</b>									Weather Resistant Nylon 6.6	Black	Acrylic Adhesive Tape	50	500
<b>BEC62-A-L</b>	0.62	15.7	1.46	37.1	1.24	31.5	0.79	20.1	Nylon 6.6	Natural	Rubber Adhesive	50	500
<b>BEC62-A-L20</b>									Nylon 6.6	Black	Rubber Adhesive	50	500
<b>BEC62-AT-L0</b>									Weather Resistant Nylon 6.6	Black	Acrylic Adhesive Tape	50	500
<b>BEC75-A-L</b>	0.75	19.0	1.49	37.8	1.49	37.8	0.89	22.6	Nylon 6.6	Natural	Rubber Adhesive	50	500
<b>BEC75-A-L20</b>									Nylon 6.6	Black	Rubber Adhesive	50	500
<b>BEC75-AT-L0</b>									Weather Resistant Nylon 6.6	Black	Acrylic Adhesive Tape	50	500

### Push Barb

<b>BECP38H25-L</b>	0.38	9.6	1.46	37.1	0.73	18.5	1.00	25.4	Nylon 6.6	Natural	Push Barb	50	500
<b>BECP38H25-L20</b>	0.38	9.6	1.46	37.1						Black		50	500
<b>BECP75H25-L</b>	0.75	19.0	1.47	37.3	1.35	34.3	Natural	50		500			
<b>BECP75H25-L20</b>	0.75	19.0	1.47	37.3			Black	50		500			

## Wire Bundle Strap

- Securely routes large cable bundles
- Rounded edges prevent damage to cable jackets
- Mounting method: two 1/4" (M6) screws
- Dimensions are 4.70"L x 1.00"W x 2.54"H (119.4mm x 25.4mm x 64.5mm)
- For indoor use only



Part Number	Material	Color	Std. Pkg. Qty.	Std. Ctn. Qty.
<b>WBS6-Q</b>	ABS	White	25	125
<b>WBS6-Q60*</b>	Flame Retardant Nylon 6.6	Black	25	125

\*Manufactured from a UL 94V-0 material.