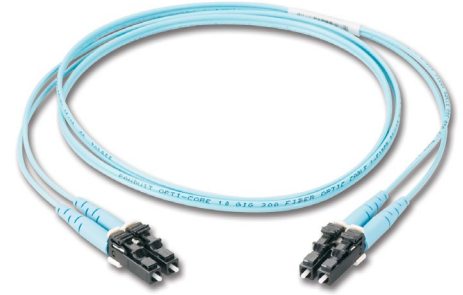


Opti-Core® Fiber Optic Patch Cords and Pigtails

technical information

Fiber optic patch cords and pigtails provide interconnect and cross-connect of applications over installations in entrance facilities, telecommunications rooms, data centers and at the desk. Patch cords support network applications in main, horizontal and equipment distribution areas and are available in riser (OFNR), and low smoke zero halogen (LSZH) rated jacket materials to comply with local cabling ordinances. Pre-terminated fiber optic pigtails support fusion splice field termination applications. Fiber optic patch cords and pigtails are available in OM4, OM3, OM2, OM1, or OS1/OS2 fiber types to meet the demands of Gigabit Ethernet, 10 Gigabit Ethernet and high speed Fibre Channel.



application

Provide interconnect and cross-connect of applications in entrance facilities, telecommunications rooms, data centers, at the desk and network applications to interconnect pre-terminated cassettes in main distribution, horizontal distribution, and equipment distribution areas.

construction

Fiber count: Simplex (1-fiber) jacketed
Duplex (2-fiber) jacketed zipcord
Tight buffered

Cable jacket ratings: Riser (OFNR)
Low Smoke Zero Halogen (LSZH) per:
IEC 60332-1-2, IEC 60332-3-24, IEC 60754-1, IEC 60754-2, IEC 61034-2

Fiber types: Singlemode: OS1/OS2 9/125µm
Multimode: OM1 62.5/125µm
OM2 50/125µm
OM3 50/125µm
OM4 50/125µm

Connector types end 'A': Simplex or duplex LC, SC

Jacket color: OS1/OS2: Yellow
OM1: Orange
OM2: Orange
OM3: Aqua
OM4: Aqua
Buffered fiber (pigtail): Blue

Connector types end 'B': Simplex or duplex LC, SC

Note: For hybrid cords, the SC connector is always on End B.

optical properties

Connector insertion loss: 0.15dB max. (Multimode - Standard IL)
0.10db max. (Multimode - Ultra IL)
0.25dB max. (LC singlemode)
0.50dB max. (SC singlemode)

Connector return loss: 20dB min. (OM1 and OM2)
26dB min. (OM3 and OM4)
55dB min. (OS1/OS2)

physical properties

Cable outside diameter (OD): 1.6mm duplex
3mm simplex
900 micron

Connector cable retention: 50N @ 0°C
19.4N @ 90°C

Connector durability: 500 cycles

Bend radius, minimum: 1.6mm: 16mm
3mm: 29mm

environmental properties

Storage and shipping temperature: -40°C to 70°C

Operating and installation temperature: Riser: -20°C to 70°C
Plenum: 0°C to 60°C

standards

Meets or exceeds ISO/IEC 11801, TIA/EIA-568-C.3, TIA-604-3 (FOCIS-3), TIA-604-10 (FOCIS-10)

Restriction of Hazardous Substances (RoHS) Compliance: All patch cord components meet the requirements of Directive 2002/95/EC.

Opti-Core® Fiber Optic Patch Cords and Pigtails

part number

Example: FZ2ERLNSNSNM005 = Fiber OM4, 2-fiber, 1.6mm cable, riser rated, LC duplex to SC duplex, standard IL, 5 meters

Character	1	2	3	4	5	6	7	8	9	10	11	12	13	14	15
Example	F	Z	2	E	R	L	N	S	N	S	N	M	0	0	5

1 – Fiber Product

F = Fiber

2 – Fiber Type

6 = OM1 62.5/125µm

5 = OM2 50/125µm

X = OM3 50/125µm

Z = OM4 50/125µm

9 = OS1/OS2 9/125µm

3 – Fiber Count

1 = 1 fiber

2 = 2 fibers

4 – Cable Type

B = 900µm buffer

E = 1.6mm

3 = 3.0mm (For SC to SC cords)

5 – Jacket Type

L = LSZH (Low Smoke Zero Halogen)

N = (No Jacket) 900µm Buffered Fiber

R = OFNR (Riser)

6 – Connector Type - End A

1 = LC

3 = SC

L = LC duplex

S = SC duplex

7 – Connector Variant

N = No variant

8 – Connector Type - End B

1 = LC

3 = SC

L = LC duplex

N = None; pigtail

S = SC duplex

9 – Connector Variant

N = No variant

10 – Performance/Construction

S = Standard IL (A-B)

N = Ultra (A-B)

11 – Other

N = No variant

12 – Unit of Length

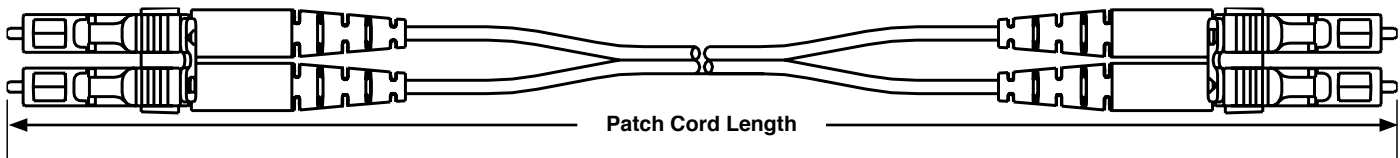
M = Meters

13, 14, 15 – Length

001-050

Note: For hybrid cords, the SC connector is always on End B.

fiber optic patch cord detail



Other options are available as follows; contact Panduit for part number:

Fiber Type: OM4+(50/125µm Signature Core™)

Cable Type: 3.0mm

Jacket Type: OFNG (General Rated)

Connector Type: ST, FC, SC/APC, E2000, MTRJ Female, FJ Jack Keyed, FJ Plug Keyed, LC Keyed, FJ Jack, FJ Plug, MTRJ Male

Performance/Construction: Optimized IL – Straight Thru (A-B), Optimized IL – Flipped (A-A), Standard IL – Flipped (A-A)

Other: Non-standard colored cable

WORLDWIDE SUBSIDIARIES AND SALES OFFICES

PANDUIT CANADA
Markham, Ontario
cs-cdn@panduit.com
Phone: 800.777.3300

PANDUIT EUROPE LTD.
London, UK
cs-emea@panduit.com
Phone: 44.20.8601.7200

PANDUIT SINGAPORE PTE. LTD.
Republic of Singapore
cs-ap@panduit.com
Phone: 65.6305.7575

PANDUIT JAPAN
Tokyo, Japan
cs-japan@panduit.com
Phone: 81.3.6863.6000

PANDUIT LATIN AMERICA
Guadalajara, Mexico
cs-la@panduit.com
Phone: 52.33.3777.6000

PANDUIT AUSTRALIA PTY. LTD.
Victoria, Australia
cs-aus@panduit.com
Phone: 61.3.9794.9020

For a copy of Panduit product warranties, log on to www.panduit.com/warranty

For more information

Visit us at www.panduit.com

Contact Customer Service by email: cs@panduit.com
or by phone: 800.777.3300

PANDUIT®

©2016 Panduit Corp.
ALL RIGHTS RESERVED.
FBSP54--WW-ENG

4/2016