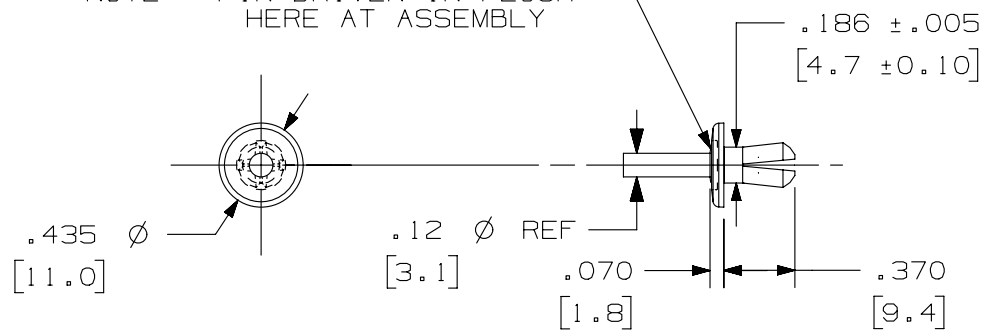


THIS COPY IS PROVIDED ON A RESTRICTED BASIS AND IS NOT TO BE USED IN ANY WAY DETRIMENTAL TO THE INTERESTS OF PANDUIT CORP.

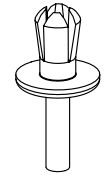
NOTE: PIN DRIVEN IN FLUSH
HERE AT ASSEMBLY



PANDUIT P/N	WEIGHT
NR1-	.11LB/ 100PCS. (50g/ 100PCS.)

- NOTES:
1. SEE CURRENT CATALOG FOR ADDITIONAL PART SUFFIXES TO INDICATE COLOR AND OR PACKAGE QUANTITY.
 2. DIMENSIONS IN PARENTHESES ARE METRIC.

TOTAL THICKNESS PANEL & DUCT	HOLE SIZE + .005[.10] - .000[.00]	ANSI STANDARD DRILL SIZE
.156 - .187 [4.0 - 4.7]	.187 [4.7]	3/16
.188 - .218 [4.8 - 5.5]	.193 [4.9]	10
.219 - .250 [5.6 - 6.35]	.203 [5.2]	13/64
.251 - .281 [6.38 - 7.1]	.213 [5.4]	3



D10100DA/14

REV	DATE	BY	CHK	APR	DESCRIPTION	ECN
2	02-19-13	JBN	RTFI	RTFI	D. UPDATED DRAWING BORDER & TITLE BLOCK	36401-09

TITLE PUSH RIVET (NR1) CUSTOMER DRAWING					
ITEM REVISION NAME D36401BA/01			PANDUIT		
DATASET FILE NAME D36401BA_DC/01G					
UNLESS OTHERWISE SPECIFIED, DIMENSIONAL TOLERANCES ARE: IN [mm]					MATERIAL: NYLON 6/6 NATURAL
.X ± .XX ±			.xxx ± .020 [.5] ANGLES ±		DRAWING NUMBER: 36401-09
			THIRD ANGLE PROJECTION		
DRAWN BY JCST	DATE 10-03-06	CHK JKG	SCALE FULL	SHT 1 OF 1	
					SIZE A