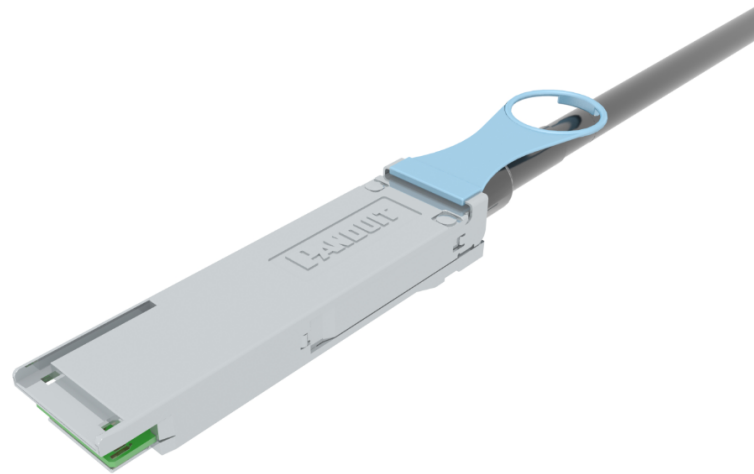


QSFP28 Passive Direct Attach Copper (DAC) Cable Assemblies

Low Power, Low Latency 100 Gb/s Server Interconnect Solution for Top of Rack Switching Applications

specifications

High bandwidth interconnects are required for next generation data centers. Panduit offers QSFP28 Direct Attach Copper Cable Assemblies. These passive cables provide a cost-effective solution for interconnecting high speed 100 GbE switches and servers. This high speed data transport capability is ideal as server virtualization becomes more prevalent. With multiple virtual machines, server I/O consolidation topology requires 100 Gb/s interconnects between top of rack switches and servers. By incorporating QSFP28 Passive DAC Cable Assemblies into the physical infrastructure, businesses can achieve 100 Gigabit performance port-to-port without additional signal processing or conversion, providing a low power, low latency server interconnect for top of rack switching applications.



technical information

Characteristic impedance:	100 +/- 10 Ohm
Temperature range:	-25°C to 80°C (-13°F to 176°F)
Bend radius:	5 x O.D. single time 10 x O.D. repeated times
Insertion force to cage:	40 N maximum
Withdrawal force from cage:	30 N maximum
Retention force:	90 – 170 N (20 – 38 lbf.)
ROHS status:	Compliant

key features and benefits

100% performance tested	Confidence that each assembly delivers specified performance for ensure network availability
High Density	Can be used in place of four SFP28 Direct Attach Cables tripling switch port density
Low latency performance	Ideal for high performance computer clustering and other latency sensitive applications
Passive low power assembly	Provides a low cost short reach interconnect option with no additional power draw
Low profile	Robust easy-to-use connector latching feature allows easy installation in belly-to-belly high density installations
Small diameter cable design	Enables proper cable management and improved airflow
Built-in strain relief	Ensures proper bend radius control for reliable deployment
Variety of lengths	1 to 5 meters (1 meter increments) for design flexibility and optimum airflow

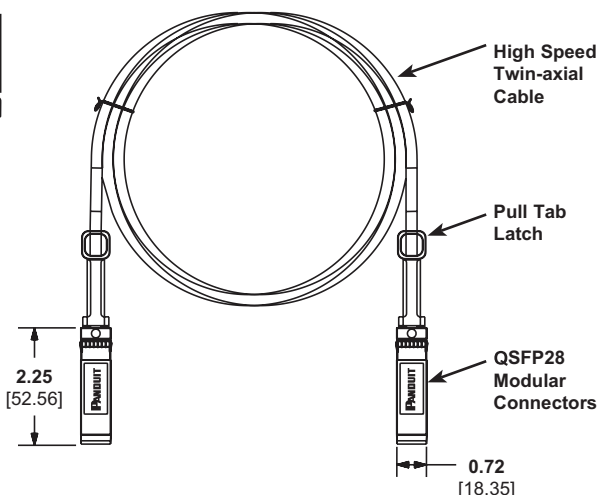
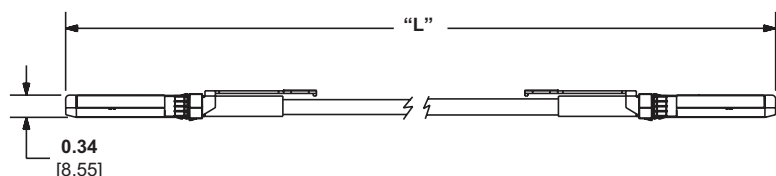
applications

- Top of Rack Switching
- Fiber Channel Over Ethernet (FCOE)
- 100 Gigabit Ethernet
- High Performance Computer Clustering

QSFP28 Passive Direct Attach Copper (DAC) Cable Assemblies

ordering information

Part Number	Length (m)	Length (Ft.)	Cable Gauge	Nominal Cable O.D.		Cable Jacket
				mm	Inches	
PQSF2PXA1MBL	1	3.3	30 AWG	6.1	0.240	PVC
PQSF2PXA2MBL	2	6.6	30 AWG	6.1	0.240	PVC
PQSF2PXA3MBL	3	9.8	30 AWG	6.1	0.240	PVC
PQSF2PXC4MBL	4	13.1	26 AWG	8.7	0.343	PVC
PQSF2PXC5MBL	5	16.4	26 AWG	8.7	0.343	PVC



Dimensions are in inches. [Dimensions in brackets are metric].

WORLDWIDE SUBSIDIARIES AND SALES OFFICES

PANDUIT US/CANADA
Phone: 800.777.3300

PANDUIT EUROPE LTD.
London, UK
Phone: 44.20.8601.7200

PANDUIT SINGAPORE PTE. LTD.
Republic of Singapore
Phone: 65.6305.7575

PANDUIT JAPAN
Tokyo, Japan
Phone: 81.3.6863.6000

PANDUIT LATIN AMERICA
Guadalajara, Mexico
Phone: 52.33.3777.6000

PANDUIT AUSTRALIA PTY. LTD.
Victoria, Australia
Phone: 61.3.9794.9020

For a copy of Panduit product warranties, log on to www.panduit.com/warranty

PANDUIT®

For more information
Visit us at www.panduit.com
Contact Customer Service by email: cs@panduit.com
or by phone: 800.777.3300

© 2020 Panduit Corp.
ALL RIGHTS RESERVED.
Printed in the U.S.A.
COSP482--WW-ENG
01/2020