



MP100 PRINTER

Quick Reference Card



Printer Tech Support 1-866-871-4571

GA-TECHSUPPORT@PANDUIT.COM

Rev. 3.8 - 9/2/2020



414074500

1

MP100 Printer and Accessories

Part No.	Description
MP100	Includes MP100 printer with protective impact bumper, 1 cassette of T100X000VPM-BK, USB cable, and power adapter (MP100-AC). For use in North America
MP100/E	Includes MP100 printer, 1 cassette of T100X000VPM-BK, USB cable, power adapter (MP100-AC) and international power cord(s). For use outside of North America
MP100-ACS	Replacement 120-240 VAC universal power adapter module with power cord for North America.
MP100-IB	Replacement MP100 Impact Bumper

MP100 Label Cassettes

- Continuous label materials:
 - Self-laminating Vinyl Tape, Heat Shrink Tubing
 - Nylon Cloth Tape, Polyolefin Tape
 - Colored Vinyl Tape, Clear Polyester Tape
 - Magnetic Tape

2

Label Cassette Types

Label Material	Example Part No.	Typical Application
Self-Laminating Vinyl Tape	S000X150VAM	Wire/Cable Marking
Heat Shrink Tubing	H000X044H1M	Wire/Cable Marking
Nylon Cloth Tape	T100X000C1M-BK	Wire/Cable Marking
Polyolefin Tape	T038X000FJM-BK	Terminal Block Labeling
Colored Vinyl Tape	T100X000VPM-BK	Safety/Facility and General Identification
Clear Polyester Tape	T100X000YKC-BK	Safety/Facility and General Identification
Magnetic Tape	T100X000MXM-BK	Safety/Facility and General Identification

3

Getting Started

- Included Items



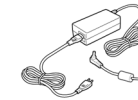
MP100 Printer with impact bumper



Label Cassette



USB Cable



AC adapter



Documents

Compliance Markings

IFT: RCPPAMP20-1156 ictQATAR



Type Approval reg. No.: S-0004726



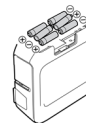
4

Printer Setup

Using batteries:

CAUTION
Always use AA-size alkaline batteries.

1. Remove the impact bumper.
2. Open the battery cover at the bottom of the printer.

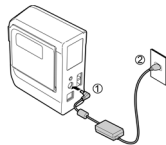


3. Insert 6 AA alkaline batteries.

Using the AC Adapter:

CAUTION
Always use the included AC adapter.

1. Connect the included AC adapter to the printer and plug the power plug into a power outlet.



5

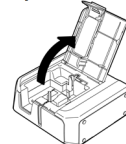
- Insert a label cassette into the printer:

1. Remove any slack in the tape inside the cassette (if needed)



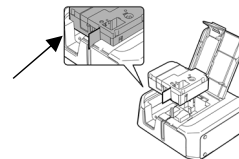
Use a pen or a pencil

2. Open the cassette door/printer cover.

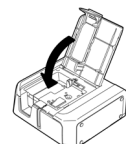


3. Place the cassette into the printer as shown.

Pass the end of the tape through the gap.



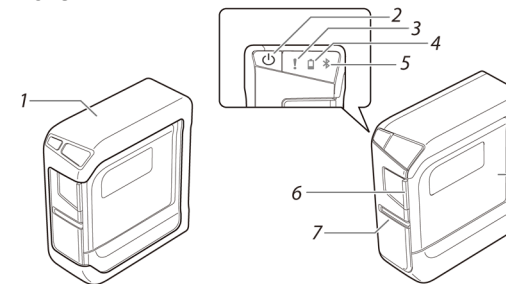
4. Close the cassette door/printer cover



6

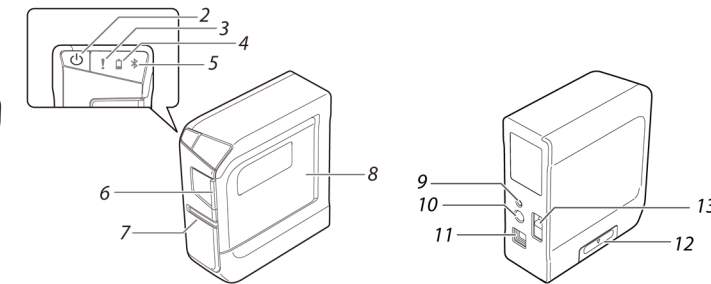
Printer Components and Functions:

Front



1. Impact bumper	Protects the printer.
2. Power button	Turns the printer power ON/OFF.
3. Warning lamp	Indicates the printer's error status.
4. Battery lamp	Indicates the printer battery's remaining charge (approximate).
5. Bluetooth lamp	Bluetooth indication.
6. Printer cover tab	Pull this tab to open the printer cover.
7. Tape outlet	Printed labels come out here.

Rear



8. Printer cover	Can be opened to insert a tape cartridge, or for print head cleaning.
9. Bluetooth button	Press this button and the Power button at the same time to enable/disable Bluetooth.
10. Power jack	Connects the included AC adapter.
11. USB port	Connects the included USB cable.
12. Battery cover	Opened when inserting or replacing batteries.
13. Security anchor	Lets you secure the printer to a desk or post with a commercial security cable lock or similar device.

7

8


Connecting Printer to Mobile Device

1. Install the Panduit mobile applications such as "Panduit Easy-Mark iLabel" and "Panduit Easy-Mark Network".

2. **Bluetooth connection setup (pairing).**

CAUTION
Place your mobile device no more than one meter away from the printer when making the settings.

MEMO
For Bluetooth pairing instructions, consult the documentation for your mobile device.

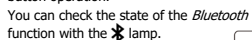
1. Press the  button to turn the printer power ON. If the Bluetooth function of the printer is disabled, enable it. See "Enabling and Disabling the Bluetooth Function".
2. On your mobile device, turn on the **Bluetooth** feature and pair the printer.

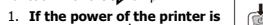

When pairing is complete, start the mobile applications on the mobile device to create labels.

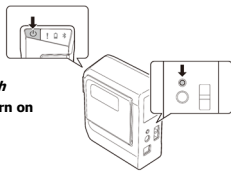
Enabling the Bluetooth Function

At the time of purchase, the **Bluetooth** function is set to be enabled when you turn on the power of the printer. This can be switched between enable and disable by button operation.



You can check the state of the **Bluetooth** function with the  lamp.

1. If the power of the printer is on, press the  button to turn off the power.
2. Press the  button **Bluetooth** button at the same time to turn on the power of the printer.



You can switch alternately between enable and disable by repeating the operations of steps 1 and 2.

The Bluetooth® word mark and logos are registered trademarks owned by the Bluetooth SIG, Inc.

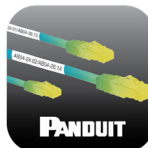
9

Printing from Mobile Apps

- Panduit Easy-Mark iLabel and Easy-Mark Network mobile printing apps are available for iOS and Android devices. Visit online app store or www.panduit.com
- For iOS device, please set Auto-Lock to **Never** or longest time allowed.
- To prevent potential disruption to Bluetooth communication **DO NOT** switch between applications on iOS devices during printing.



Easy-Mark iLabel App



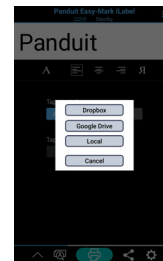
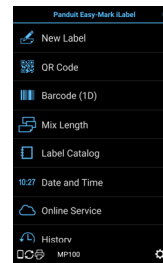
Easy-Mark Network App

Android™ logo is a trademark of Google Inc.
iOS is a trademark or registered trademark of Cisco in the U.S. and other countries and is used under license.

10

Easy-Mark iLabel App

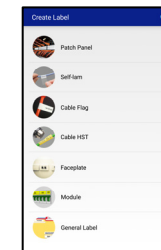
- Text
- Voice to Text
- Barcodes
- QR Codes
- Date / Time Stamp
- Save Labels
- Share and Store Files Online
- Many Font Sizes



11

Easy-Mark Network App

- Create cable markers
- Create labels for patch panels, faceplates, and modules
- Text
- Voice to Text
- Save Labels
- ANSI/TIA-606 compliance
- Connect to Fluke LinkWare™ Live



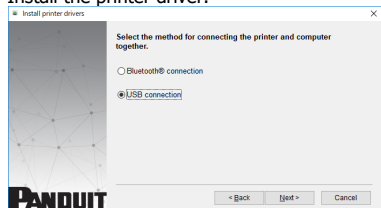
12

Connecting Printer to Computer

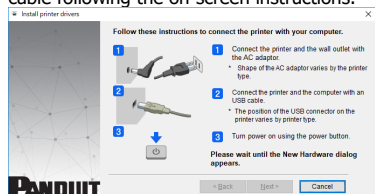
CAUTION
Do not connect the printer and computer before installing the software. Connect the printer as directed in the installation screen.

MEMO
• The procedure given here is for Windows computers.
• For information on how to turn on the **Bluetooth** feature of the computer, consult the documentation for the computer.

- Install the printer driver.



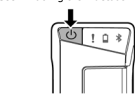
1. For USB
Connect the printer and the computer with a USB cable following the on-screen instructions.



13

2. For Bluetooth®

1) Turn on the printer.
If the **Bluetooth** function of the printer is disabled, enable it.
See "Enabling the **Bluetooth** Function".



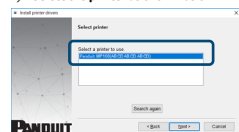
- 2) Turn on the **Bluetooth** feature of your computer.



3) Select the checkbox as shown below.



4) Select the printer as shown below.



Troubleshooting

Meanings of lamps

The lamps indicate printer statuses.

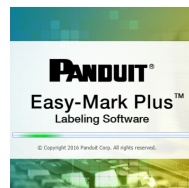
Lamp's condition		Printer status
*: Depends on printer operation status	--: Unit	
		Bluetooth enabled. Or connected to an Android device or Windows computer.
--	* Fading in and out	
* *	* Lit	Bluetooth connection completed. (when connecting to an iOS device)
--	* Flashing quickly	Performing operation such as printing or label cutting.
--	* Flashing (once every 5 seconds)	Bluetooth disabled.
--	* --	Power OFF.
* Lit	*	Low batteries and to be replaced. Have replacement batteries ready.
* Flashing quickly	*	Replace batteries.

Note: Please refer to the instruction label in cassette compartment for the printer head cleaning.

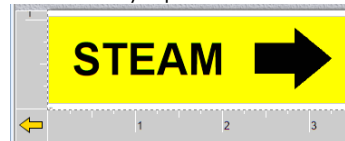
14

Printing from Easy-Mark Plus Software

- Connect the MP100 printer to a computer with USB cable.
- Print from Easy-Mark Plus Labeling Software. Easy-Mark Plus is sold separately and includes the MP100 driver.
 - Easy-Mark Plus on disc: EMPLUS-CD
 - Easy-Mark Plus on USB flash drive: EMPLUS-2GO
 - Easy-Mark downloadable version: EMPLUS-DL



Example using T100X000VXM-BK, black on yellow continuous vinyl tape:



15

Additional Support

Visit www.panduit.com

Free Downloads

Path: Support / Download Center / Software
Firmware Printers

- Replacement Quick Reference Card
- Product Bulletin
- Product specification and safety information.

Warranty Registration

Path: Support / Product Registration

Related Products

- MP Label Cassettes
- MP300 Printer
- Easy-Mark Plus Labeling Software

PANDUIT TECHNICAL SUPPORT

1-866-871-4571

GA-TECHSUPPORT@PANDUIT.COM

Part Number: MP100-QRC-EN, Rev 3.8

DWG Number: 00210ECB

16