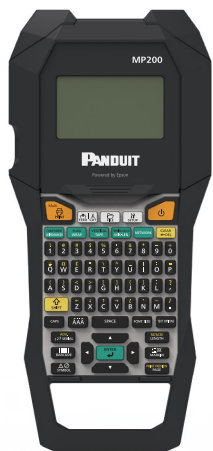




# MP200 PRINTER

Quick Reference Card



Printer Tech Support 1-866-871-4571  
GA-TECHSUPPORT@PANDUIT.COM

Rev. 0.0 – 1/20/21



\*414140400\*

## MP200 Printer and Accessories

Part No.	Description
MP200	Includes MP200 printer, 1 cassette of T100X000VPM-BK.
MP200-KIT	Includes MP200 printer, 1 cassette of T100X000VPM-BK, hard carrying case, Li-Ion rechargeable battery pack, magnetic attachments, USB cable, and power adapter (MP-ACS-1). For use in North America
MP200/E-KIT	Includes MP200 printer, 1 cassette of T100X000VPM-BK, hard carrying case, Li-Ion rechargeable battery pack, magnetic attachments, USB cable, power adapter (MP-ACS-1) and international power cord(s). For use outside of North America
MP-ACS-1	120-240 VAC universal power adapter module with power cord for North America.
MP-BATT	Replacement Li-Ion rechargeable battery pack
MP200-CASE	Replacement hard carrying case

## MP200 Label Cassettes

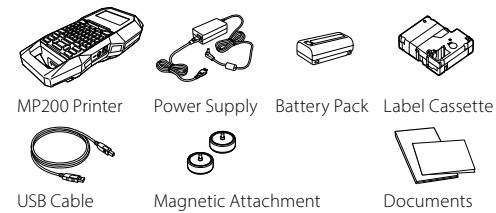
- Continuous label materials:
  - Self-laminating Vinyl Tape, Heat Shrink Tubing
  - Nylon Cloth Tape, Polyolefin Tape
  - Colored Vinyl Tape, Clear Polyester Tape
  - Magnetic Tape
- Compatible for use with Panduit MP Cassette Continuous Label Material up to 1" wide

## Label Cassette Types

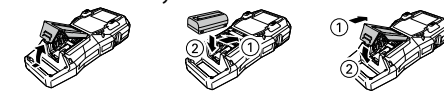
Label Material	Example Part No.	Typical Application
Self-Laminating Vinyl Tape	S000X100VAM	Wire/Cable Marking
Heat Shrink Tubing	H000X044HIM	Wire/Cable Marking
Nylon Cloth Tape	T100X000C1M-BK	Wire/Cable Marking
Polyolefin Tape	T038X000FJM-BK	Terminal Block Labeling
Colored Vinyl Tape	T100X000VPM-BK	Safety/Facility and General Identification
Clear Polyester Tape	T100X000YKC-BK	Safety/Facility and General Identification
Magnetic Tape	T100X000MXM-BK	Safety/Facility and General Identification

## Getting Started

- MP200-KIT Included Items



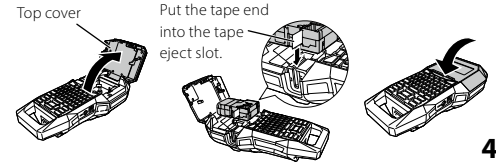
- Install Li-ion battery



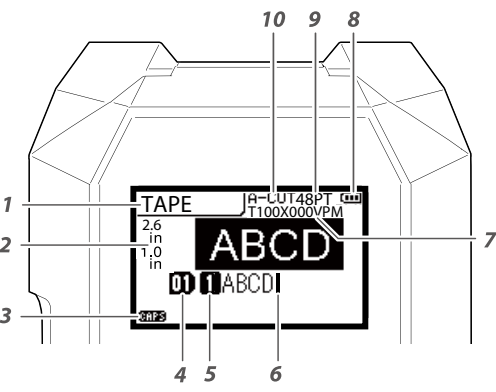
- Charge Li-ion battery



- Install label cassette

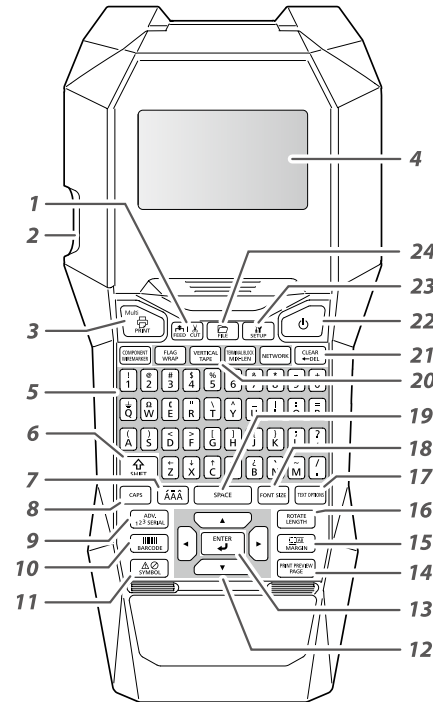


## MP200 Display



1. Label Mode
2. Current label length & width
3. CAPS Lock on
4. Page Number
5. Line Number
6. Cursor
7. Label Part number
8. Battery Life
9. Font Size
10. Cutter Setting

## MP200 Keypad Functions



1. Feed and cut the label material
2. Label exit slot
3. Print a label
4. Display Screen
5. Number and letter keys
6. Shift/secondary functions
7. Enter a character with an accent
8. CAPS lock
9. Create a serialization
10. Create a barcode
11. Create a symbol
12. Directional arrow keys
13. Enter key
14. Add a page/print preview
15. Set label margins
16. Set tape length/rotate text
17. Text options key
18. Change font size
19. Space bar
20. Label mode keys
21. Delete/Clear key
22. Power on/off
23. Setup menu key
24. File save and recall

## Label Modes



**1. Wiremarker**

ABCD
ABCD
ABCD

**Component**

ABCD
------

**2. Wrap**

ABCD
ABCD
ABCD
ABCD
ABCD

**Flag**

ABCD
ABCD

**3. Tape**

<b>WATER</b>
--------------

**Vertical**

W
A
T
E
R

**4. Mixed Length**

POWER	T1	MOTOR CONTROL	T2
-------	----	---------------	----

**Terminal Block**

T1
T2
T3
T4

**5. Network**

A01	A02	A03	A04
-----	-----	-----	-----

5

6

7

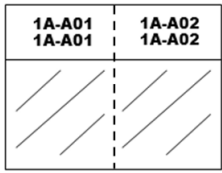
8

# HOW TO: Serialization



1. Type "1A-A"
2. Press the SERIAL key
3. Enter a start value of 01, end value of 02, and increment value of 1
4. Press ENTER
5. Press PRINT

Example using S000X100VAM, self-laminating wire/cable markers:



# Symbols



1. Press the SYMBOL key
2. Select the symbol group named WARNING
3. Select the symbol on the first row
4. Press ENTER
5. Press SPACE
6. Type "CAUTION"
7. Press PRINT

Example using T100X000VXM-BK, black on yellow continuous vinyl tape:



Over 20 categories of symbols for electrical, network, audio visual, laboratory, arc flash, PPE, Prohibition, arrows, and more.

Hundreds of individual images included.



# Barcodes



## Code 39

1. Press the BARCODE key
2. Scroll to CODE 39 and press ENTER
3. Select Medium Width
4. Select 2.5 Ratio
5. Select check digit OFF
6. Type text ABC
7. Press ENTER
8. Press PRINT



## QR Code

1. Press the BARCODE key
2. Scroll to QR CODE and press ENTER
3. Select Symbol Size
4. Select 7% ECC Level
5. Type text WWW.PANDUIT.COM
6. Press ENTER
7. Press PRINT



9 different barcode styles included

# Print from Easy-Mark Plus Software

- Connect the MP200 printer to a computer with USB cable.
- Print from Easy-Mark Plus Labeling Software. Easy-Mark Plus is sold separately and includes MP200 driver.
  - Easy-Mark Plus on disc: EMPLUS-CD
  - Easy-Mark Plus on USB flash drive: EMPLUS-2GO
  - Easy-Mark downloadable version: EMPLUS-DL



# Other Functions

- PRINT – Print labels
- MULTI – Adjust print options, print copies
- FEED | CUT – Feeds label material without printing. Cuts label after feeding.
- CLEAR – Clear screen, remove formatting
- FILE – Save or recall label files
- FONT SIZE – Change the character size
- TEXT OPTIONS – Change the font styling
- MARGIN – Change the label margin
- LENGTH – Adjust the label length
- ROTATE – Rotate the text
- PAGE – Add a new page to a label design
- PRINT PREVIEW – View the label before printing

# Setup Menu



- Auto Cut – Turn the Automatic Cut function ON or OFF. If Auto Cut is ON, then select Half Cut ON or OFF. Half Cut cuts through the label but not the liner.
- Print Density – Raise or lower the print density/darkness of print
- Drop Stop – Set the drop stop function to ON or OFF. Drop Stop pauses printing until the cut label has been removed from printer exit.
- Backlight – Turn backlight function ON or OFF
- Language – Select the preferred language. 13 languages are available: Dansk, Deutsch, English, Español, Français, Italiano, Nederlands, Norsk, Português – BR, Português – EU, Suomi, Svenska, Türkçe
- Inch:cm – Change the unit of measure between inches and centimeters.
- Version – Display the current operating system version number

# Additional Support

Visit [www.panduit.com](http://www.panduit.com)

## Free Downloads

- Path: Support / Download Center / Software Firmware Printers
- Detailed Operator's Manual
  - Replacement Quick Reference Card
  - Product Bulletin
  - Product specification and safety information.

## Warranty Registration

Path: Support / Product Registration

## Related Products

- MP Label Cassettes
- MP75 Printer
- MP100 Printer
- MP300 Printer
- Mobile Labeling Apps for Android and iOS
- Easy-Mark Plus Labeling Software

Note: Please refer to the instruction label in cassette compartment for the printer head cleaning.

# Global Customer Service

- CS@PANDUIT.COM
- U.S. and Canada: 800-777-3300
- Europe, Middle East, and Africa: 44.20.8601.7200
- Latin America: 52.33.3777.6000
- Asia Pacific: 65.6305.7575

# Panduit Technical Support

- [GA-TECHSUPPORT@PANDUIT.COM](mailto:GA-TECHSUPPORT@PANDUIT.COM)
- U.S. and Canada: 1-866-871-4571
- Europe: 31.546.580.452
- Latin America: 52.33.3777.6000
- Asia Pacific: 65.6379.6700

Part Number: MP200-QRC-EN, Rev. 0.0  
DWG Number: 00818EBA