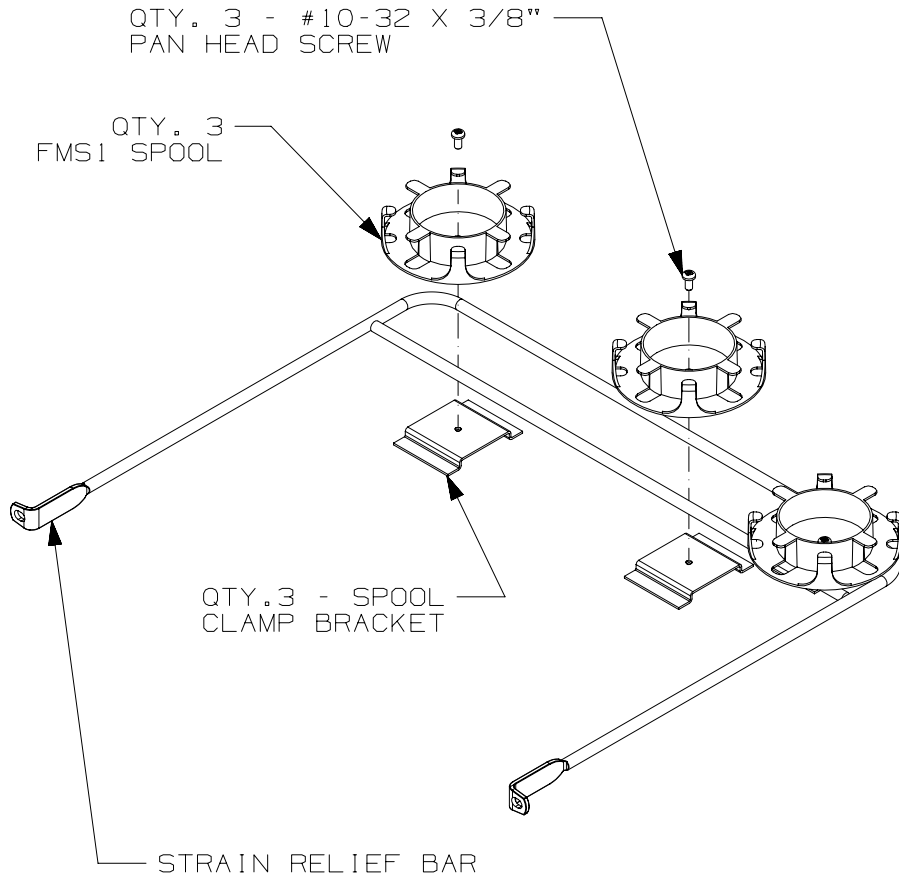


THIS COPY IS PROVIDED ON A RESTRICTED BASIS AND IS NOT TO BE USED IN ANY WAY DETRIMENTAL TO THE INTERESTS OF PANDUIT CORP.

PANDUIT PART NO.	WEIGHT
FQCRCLM	1.8 LBS/EACH 800 g/EACH



- SEE CATALOG FOR COMPLETE LIST OF PARTS APPLICABLE FOR USE WITH THIS PART.
- ALL DIMENSIONS IN BRACKETS [ ] ARE METRIC.
- STRAIN RELIEF BAR MATERIAL IS  $\varnothing 5/16$ " COLD ROLLED STEEL.
- SPOOL CLAMP BRACKET IS MADE FROM 16 GA. (.06") GALVANNEALED STEEL, ASTM A653 A60 OR C.R.S.
- THE STRAIN RELIEF BAR AND SPOOL CLAMP BRACKETS ARE PAINTED BLACK.
- PART INCLUDES:
  - (3) #10-32 X 3/8" PAN HEAD SCREWS
  - (1) #12-24 X 1/2" SCREW KIT CONTAINING QTY. 4 RACK MOUNTING SCREWS
  - (1) M6X1.0-6HX15MM SCREW KIT CONTAINING QTY. 4 RACK MOUNTING SCREWS
  - (3) FMS1 FIBER SLACK MANAGEMENT SPOOLS
  - (3) SPOOL CLAMP BRACKETS
  - (1) STRAIN RELIEF BAR

PART NUMBER		FQCRCLM	
TITLE			
FIBER QUICKNET CASSETTE REAR CABLE MANAGER			
CUSTOMER DRAWING			
ITEM REVISION NAME		01027EAA/00	
DATASET FILE NAME		01027EAA_DC/00A	
UNLESS OTHERWISE SPECIFIED, DIMENSIONAL TOLERANCES ARE: IN (mm)		MATERIAL:	
.X ±		.XXX ±	
.XX ±		ANGLES ±	
DRAWING NUMBER:		SEE NOTES	
DRAWING NUMBER:		01027EAA	
THIRD ANGLE PROJECTION			
DRAWN BY	DATE	CHK	SCALE
LLK	7/7/2021	JSP	NONE
REV	DATE	BY	CHK
00A	7/7/21	LLK	JSP
APR	DESCRIPTION		ECN
	FIRST RELEASE TO PRODUCTION		01027EAA-00A
SHT 1 OF 2		A	

D10100DA/14

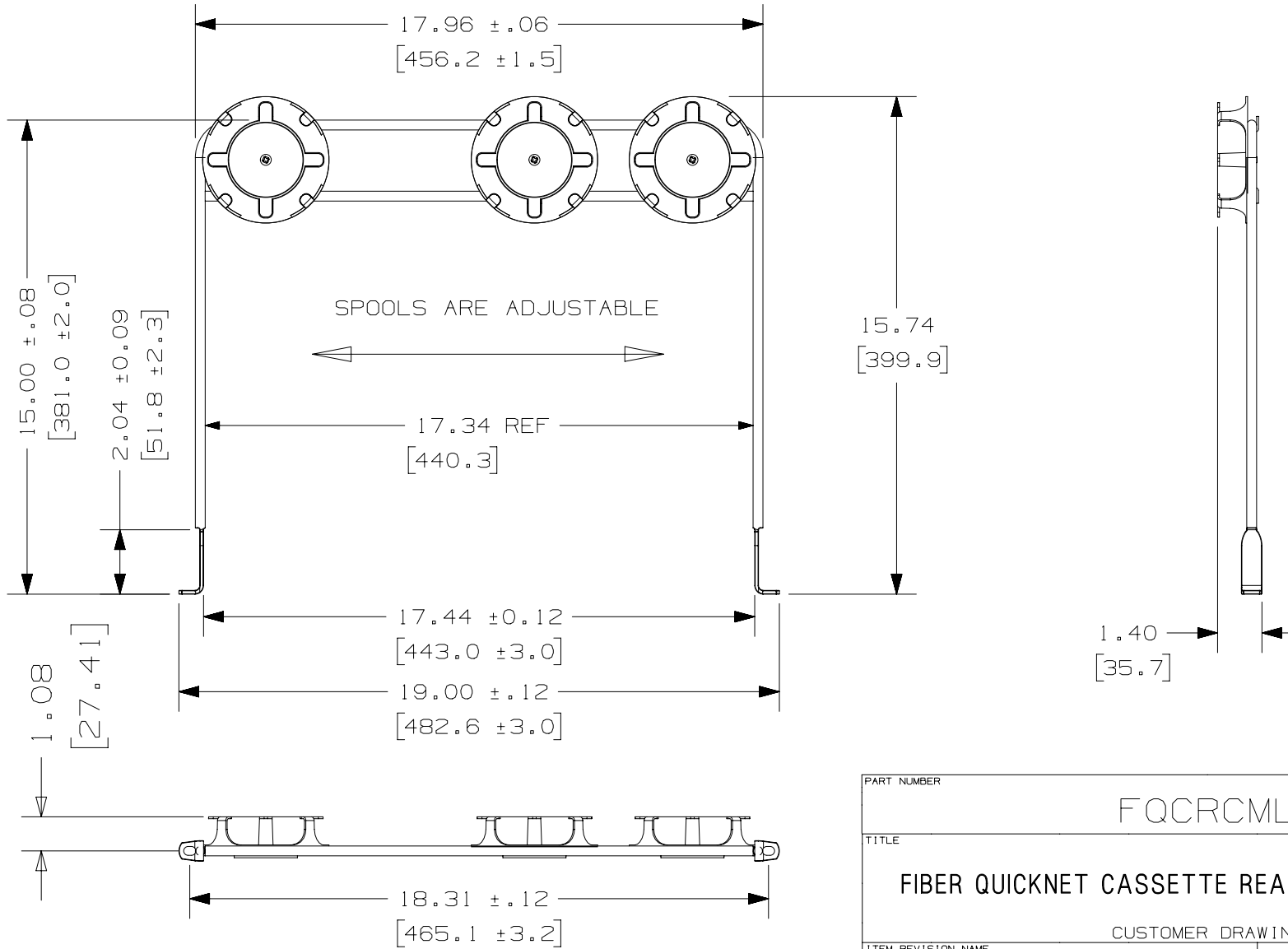
2

1

2

1

THIS COPY IS PROVIDED ON A RESTRICTED BASIS AND IS NOT TO BE USED IN ANY WAY DETRIMENTAL TO THE INTERESTS OF PANDUIT CORP.



PART NUMBER		FQCRCLM	
TITLE			
FIBER QUICKNET CASSETTE REAR CABLE MANAGER			
CUSTOMER DRAWING			
ITEM REVISION NAME		01027EAA/00	
DATASET FILE NAME		01027EAA_DC/00A	
UNLESS OTHERWISE SPECIFIED, DIMENSIONAL TOLERANCES ARE: IN (mm)		MATERIAL:	
.X ± .XX ±		.XXX ± ANGLES ±	
SEE NOTES		DRAWING NUMBER:	
01027EAA-00A		01027EAA	
REV	DATE	BY	CHK
00A	Jul 7 2021	Luke	JSP
DESCRIPTION	ECN	SCALE	SIZE
SEE SHEET 1 OF 2 FOR REVISION CONTROL	01027EAA-00A	NONE	A

D101000DA/14

2

1

2

1