

THIS COPY IS PROVIDED ON A RESTRICTED BASIS AND IS NOT TO BE USED IN ANY WAY DETRIMENTAL TO THE INTERESTS OF PANDUIT CORP.

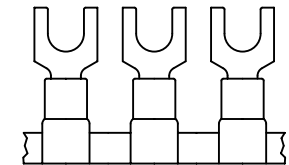
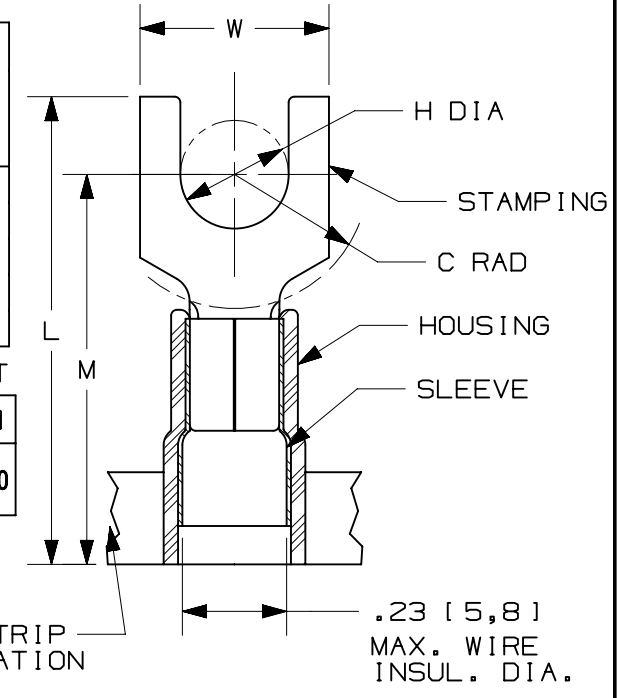
PANDUIT PART #	STUD SIZE		DIMENSIONS in. [mm]					CA9 SERIES CRIMP DIE	CA-800(EZ) SERIES CRIMP DIE
	ENGLISH	METRIC	L ± .03 [0,76]	W ± .01 [0,25]	C ± .02 [0,51]	M ± .03 [0,76]	H ± .01 [0,25]		
PN10-6F-2K	#6	M3,5	1.00 [25,4]	.31 [7,9]	.24 [6,1]	.81 [20,6]	.15 [3,8]	CD9-3B	CA-800-3
PN10-8F-2K	#8	M4	1.03 [26,2]	.37 [9,4]	.24 [6,1]	.81 [20,6]	.17 [4,3]		
PN10-10F-2K	#10	--	1.04 [26,4]	.37 [9,4]	.24 [6,1]	.81 [20,6]	.20 [5,1]		
PMN6-5F-2K	--	M5	1.01 [25,7]	.38 [9,5]	.24 [6,1]	.79 [19,9]	.21 [5,3]		
PN10-14F-2K	1/4"	M6	1.14 [29,0]	.49 [12,5]	.32 [8,1]	.90 [22,9]	.27 [6,9]		

PRESS/APPLICATOR COMPATIBILITY CHART

PRESS	CP-871	CP-861
APPLICATOR	CA9 CA-800EZ	CA-800

NOTES:

- cULus LISTED FOR:
 - A. #12-10 AWG [4,0-6,0 mm²] SOLID OR STRANDED COPPER WIRE
 - B. 221°F [105°C] MAX. OPERATING TEMPERATURE
 - C. 600 V. MAX. VOLTAGE RATING
- SEE www.panduit.com FOR PACKAGE QUANTITIES
- MATERIAL:
 - A. STAMPING: .04" [1,0] THK COPPER, TIN PLATED
 - B. HOUSING: NYLON, YELLOW
 - C. SLEEVE: BRASS, TIN PLATED
- DIMENSIONS IN BRACKETS ARE METRIC EQUIVALENT
- WIRE STRIP LENGTH: 9/32 ^{+1/32} [7,1^{±0,8}]



REV	DATE	BY	CHK	APR	DESCRIPTION	ECN
07	06/14	MBY	JHNU	RGB	REVISED NOTES, MOVED TOOLS TO TABLE, REVISED CERTIFICATION	N41094BA-A41094
06	09.12.12	JBN	LCA	VMB	ADDED METRIC EQUIVALENT. REVISED NOTES. UPDATED DRAWING TO CURRENT STANDARDS.	A41094

TITLE FORK TERMINALS, 3 PC. NYLON INSULATED, #12-10, CONTINUOUS REEL CUSTOMER DRAWING			
ITEM REVISION NAME N41094BA/07		PANDUIT	
DATASET FILE NAME N41094BA_DC/07A			
UNLESS OTHERWISE SPECIFIED, DIMENSIONAL TOLERANCES ARE: IN [mm]		MATERIAL: SEE NOTES	
DRAWING NUMBER: A41094		DRAWING NUMBER: A41094	
DRAWN BY JMV	DATE -	CHK LA	SCALE N.T.S.
SHT 1 OF 1		A	