

2

1

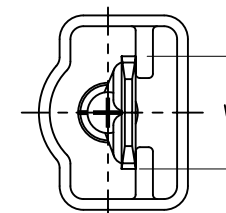
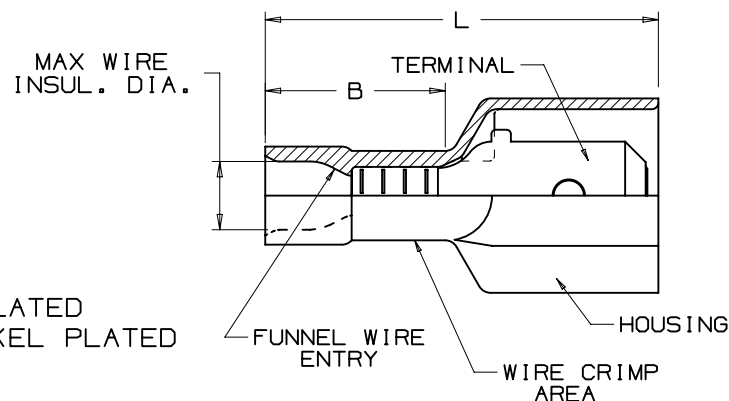
THIS COPY IS PROVIDED ON A RESTRICTED BASIS AND IS NOT TO BE USED IN ANY WAY DETRIMENTAL TO THE INTERESTS OF PANDUIT CORP.

PANDUIT PART #	WIRE RANGE AWG [mm ²]	TAB SIZE INCH [mm]	HOUSING COLOR (TRANSLUCENT)	MAX WIRE INSULATION DIA.	DIMENSIONS in. [mm]			CRIMP TOOLS
					L± .03 [0,8]	W± .01 [0,3]	B± .01 [0,3]	
*EDNF18250FIMBK	#22-18 [0,5-1,0]	.250 X .032 [6,3 X 0,8]	RED	.145 [3,7]	.94 [24,0]	.25 [6,4]	.43 [11,0]	KST-2000C
*EDNF14250FIMBK	#16-14 [1,5-2,5]	.250 X .032 [6,3 X 0,8]	BLUE	.165 [4,2]	.91 [24,6]	.25 [6,4]	.48 [12,1]	
**EDNF10250FIMBK	#12-10 [4,0-6,0]	.250 X .032 [6,3 X 0,8]	YELLOW	.248 [6,3]	.98 [25,0]	.25 [6,4]	.51 [13,0]	


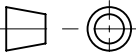
*NOT cULus LISTED
**UL LISTED

NOTES:

- cULus LISTED FOR:
 - STRANDED COPPER WIRE ONLY
 - 221°F (105°C) MAX TEMP RATING
 - 300V MAX VOLTAGE
- MATERIAL:
 - STAMPING: .016" (0.40) THK BRASS, NICKEL PLATED
EDNF14250FIMBK: .030" (0.80) THK BRASS, NICKEL PLATED
 - HOUSING: NYLON
- WIRE STRIP LENGTH: $9/32'' \begin{smallmatrix} +1/32 \\ -0 \end{smallmatrix}$ [6,8mm $\begin{smallmatrix} +0.8 \\ -0 \end{smallmatrix}$]
 FOR EDNF10250FIMB: $11/32'' \begin{smallmatrix} +1/32 \\ -0 \end{smallmatrix}$ [8,8mm $\begin{smallmatrix} +0.8 \\ -0 \end{smallmatrix}$]
- SEE WWW.PANDUIT.COM FOR PACKAGE QUANTITIES INDICATED BY PART NUMBER SUFFIX
- DIMENSIONS IN BRACKETS ARE METRIC EQUIVALENT
- PARTS ARE RoHS COMPLIANT



cULus
LISTED
19X5
E78522

TITLE					
STRONGHOLD MALE DISCONNECT (250 SERIES) NYLON FULLY INSULATED #22-10 AWG					
CUSTOMER DRAWING					
ITEM REVISION NAME					
02937NDW/01					
DATASET FILE NAME			MATERIAL: SEE NOTES		
02937NDW/01					
UNLESS OTHERWISE SPECIFIED, DIMENSIONAL TOLERANCES ARE: IN [mm] .x ± .1 [2.54] .xxx ± .005 [.127] .xx ± .01 [.25] ANGLES ± 5 °			DRAWING NUMBER: 02937NDW - DC		
 THIRD ANGLE PROJECTION					
DRAWN BY	DATE	CHK	SCALE	SHT 1 OF 1	SIZE
JHNU	9/22	BDK	NTS		A

2

1

D10100DA/20