

THIS COPY IS PROVIDED ON A RESTRICTED BASIS AND IS NOT TO BE USED IN ANY WAY DETRIMENTAL TO THE INTERESTS OF PANDUIT CORP.

PANDUIT PART #	STUD SIZE		DIMENSIONS in. [mm]				
	ENGLISH	METRIC	L ± .03 [0,8]	W ± .01 [0,3]	C ± .02 [0,5]	M ± .03 [0,8]	H ± .01 [0,3]
EV10-6RBK	#6	M3	.89 [22,7]	.28 [7,2]	.24 [6,1]	.51 [13,0]	.15 [3,7]
EV10-8RBK	#8	M4	.89 [22,7]	.28 [7,2]	.24 [6,1]	.51 [13,0]	.17 [4,3]
EV10-10RBK	#10	M5	1.02 [26,0]	.37 [9,5]	.33 [8,3]	.51 [13,0]	.21 [5,3]
EV10-14RBK	1/4"	M6	1.16 [29,5]	.47 [12,0]	.41 [10,5]	.51 [13,0]	.25 [6,4]
EV10-56RBK	5/16"	M8	1.32 [33,5]	.59 [15,0]	.52 [13,3]	.51 [13,0]	.33 [8,4]
EV10-38RBK	3/8"	M10	1.32 [33,5]	.59 [15,0]	.52 [13,3]	.51 [13,0]	.41 [10,5]

# NOTES:

## 1. FOR USE WITH:

- A. #12-10 AWG [4,0-6,0 mm<sup>2</sup>] STRANDED COPPER WIRE
- B. 221°F [105°C] MAX. OPERATING TEMPERATURE
- C. 600V. MAX. BLDG WIRE  
(1000 V. MAX. IN SIGNS, FIXTURES & LUMINAIRES)

## 2. MATERIAL:

- A. STAMPING: .04" [1,0] THK COPPER, TIN PLATED
- B. HOUSING: VINYL, YELLOW

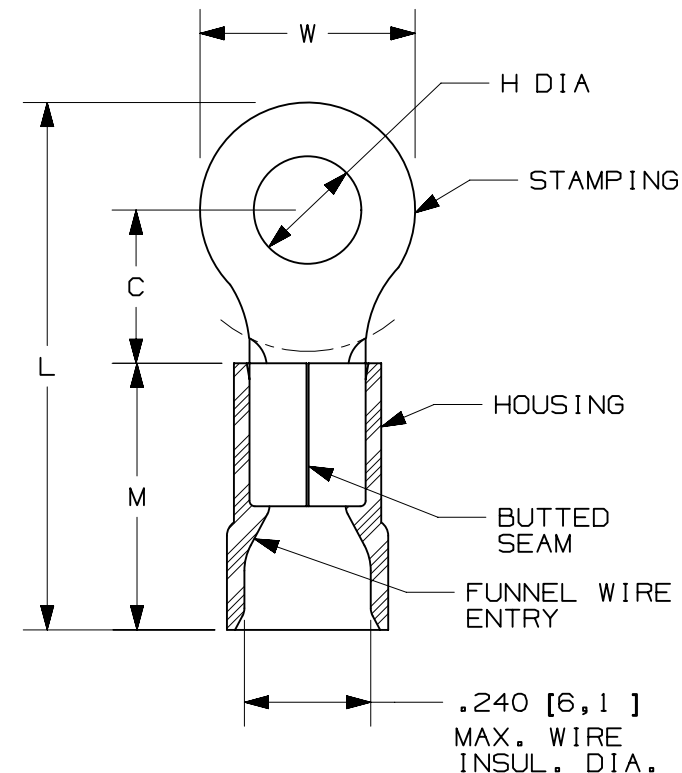
## 3. INSTALLATION TOOLS: KST-2000A

## 4. WIRE STRIP LENGTH: 11/32" <sup>+1/32</sup><sub>-0</sub> [8,8mm <sup>+0,8</sup><sub>-0</sub>]

## 5. SEE [www.panduit.com](http://www.panduit.com) FOR PACKAGE QUANTITIES INDICATED BY PART NUMBER SUFFIX

## 6. DIMENSIONS IN BRACKETS ARE METRIC EQUIVALENT

## 7. PARTS ARE RoHS COMPLIANT



TITLE					
<b>STRONGHOLD RING TERMINALS</b> <b>VINYL INSULATED, BUTTED SEAM #12-10 AWG</b>					
CUSTOMER DRAWING					
ITEM REVISION NAME			02937NEB/01		
DATASET FILE NAME			02937NEB-DC/01		
UNLESS OTHERWISE SPECIFIED, DIMENSIONAL TOLERANCES ARE: IN [mm]			<b>PANDUIT</b> <sup>TM</sup>  MATERIAL:  SEE NOTES  DRAWING NUMBER: <b>02937NEB-DC</b>		
.x ± .1 [2.54]      .xxx ± .005 [.13] .xx ± .01 [.25]      ANGLES ± 5°					
THIRD ANGLE PROJECTION			SCALE N.T.S.		
DRAWN BY	DATE	CHK	SCALE	SHEET 1 OF 1	
JHNU	9/22	BDK	N.T.S.	A	