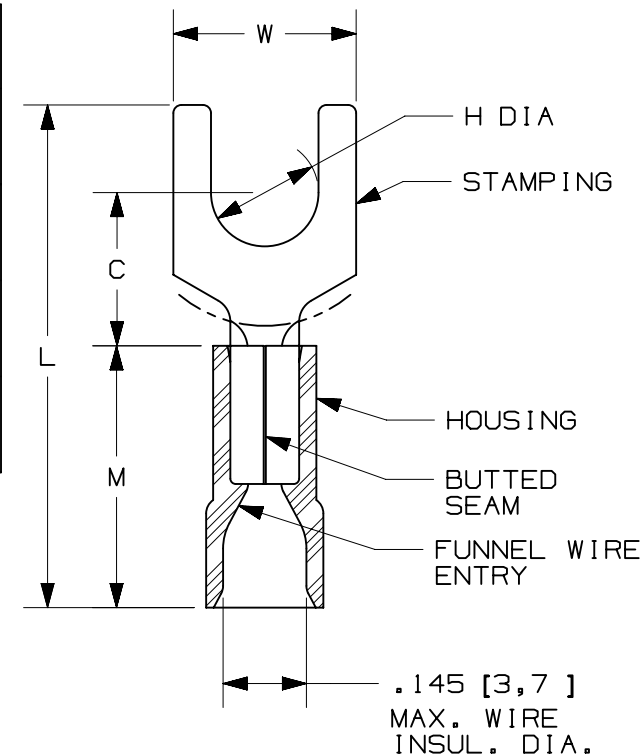


THIS COPY IS PROVIDED ON A RESTRICTED BASIS AND IS NOT TO BE USED IN ANY WAY DETRIMENTAL TO THE INTERESTS OF PANDUIT CORP.

PANDUIT PART #	STUD SIZE		DIMENSIONS in. [mm]					TOOLS
	ENGLISH	METRIC	L ± .03 [0,51]	W ± .01 [0,25]	C ± .02 [0,38]	M ± .03 [0,51]	H ± .01 [0,25]	
EV18-6FBK	#6	M3	.83 [21,0]	.25 [6,4]	.26 [6,5]	.39 [10,0]	.15 [3,7]	KST-2000A
EV18-8FBK	#8	M4	.83 [21,0]	.28 [7,2]	.26 [6,5]	.39 [10,0]	.17 [4,3]	
EV18-10FBK	#10	M5	.83 [21,0]	.37 [9,5]	.26 [6,5]	.39 [10,0]	.21 [5,3]	

NOTES:

- cULus LISTED FOR:
 - 22-18 AWG [0,5-1,0 mm²] SOLID OR STRANDED COPPER WIRE
 - 221°F [105°C] MAX. OPERATING TEMPERATURE
 - 600V. MAX. BLDG WIRE
(1000 V. MAX. IN SIGNS, FIXTURES & LUMINAIRES)
- MATERIAL:
 - STAMPING: .030" [0,8] THK COPPER, TIN PLATED
 - HOUSING: VINYL, RED
- WIRE STRIP LENGTH: 9/32" ^{+1/32}₋₀ [6,8mm ^{+0,8}₋₀]
- SEE www.panduit.com FOR PACKAGE QUANTITIES
- DIMENSIONS IN BRACKETS ARE METRIC EQUIVALENT
- PARTS ARE RoHS COMPLIANT



TITLE		STRONGHOLD FORK TERMINALS	
		VINYL INSULATED, BUTTED SEAM #22-16 AWG	
		CUSTOMER DRAWING	
ITEM REVISION NAME		02937NDS/01	
DATASET FILE NAME		02937NDS-DC/01	
UNLESS OTHERWISE SPECIFIED, DIMENSIONAL TOLERANCES ARE: IN [mm]		PANDUIT TM MATERIAL: SEE NOTES	
.X ± .XXX ± .XX ± ANGLES ±			
THIRD ANGLE PROJECTION		DRAWING NUMBER: 02937NDS-DC	
DRAWN BY	DATE	CHK	SCALE
JHNU	9/22	BDK	N.T.S.
SHEET 1 OF 1		A	