

2

1

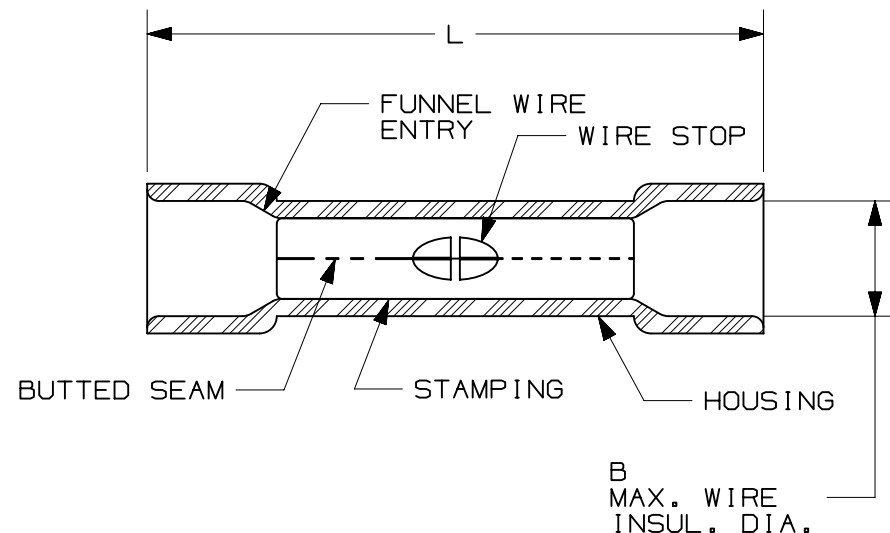
THIS COPY IS PROVIDED ON A RESTRICTED BASIS AND IS NOT TO BE USED IN ANY WAY DETRIMENTAL TO THE INTERESTS OF PANDUIT CORP.

PANDUIT PART #	WIRE SIZE AWG [mm ²]	COLOR	DIMENSIONS in. [mm]	
			L ± .03 [0,8]	B ± .01 [0,3]
*ESV18BXK	#22-18 [0,5-1,0]	RED	0.97 [24,6]	.145 [3,7]
ESV14BXK	#16-14 [1,5-2,5]	BLUE	0.97 [24,6]	.165 [4,2]
ESV10BXK	#12-10 [4,0-6,0]	YELLOW	1.04 [26,5]	.236 [6,0]

*NOT cULus LISTED

NOTES:

- cULus LISTED FOR:
 - SOLID OR STRANDED COPPER WIRE
 - 167°F [75°C] MAX OPERATING TEMPERATURE
 - 600V MAX VOLTGE RATING
- INSTALLATION TOOLS: KST2000A
- WIRE STRIP LENGTH:
 - ESV18BXK = 3/8" [9.6mm]
 - ESV14BXK, ESV10BXK = 1/4" [6.4mm]
- MATERIAL:
 - STAMPING (#22-18 & #16-14): .03" [0,8] THK COPPER, TIN PLATED
 - STAMPING (#12-10): .04" [1,0] THK COPPER, TIN PLATED
 - HOUSING: VINYL
- SEE www.panduit.com FOR PACKAGE QUANTITIES INDICATED BY PART NUMBER SUFFIX
- DIMENSIONS IN BRACKETS ARE METRIC EQUIVALENT
- PARTS ARE RoHS COMPLIANT



LISTED
2000
E52164

TITLE						
STRONGHOLD BUTT SPLICE, EXPANDED DIAMETER VINYL INSULATED, BUTTED SEAM #22-10 AWG						
CUSTOMER DRAWING						
ITEM REVISION NAME				PANDUIT		
02937NDL/01						
DATASET FILE NAME				MATERIAL:		
02937NDL-DC/01						
UNLESS OTHERWISE SPECIFIED, DIMENSIONAL TOLERANCES ARE: IN [mm]				SEE NOTES		
.x ± .1 [2.54] .xxx ± .005 [.127] .xx ± .01 [.25] ANGLES ± 5 °						
				THIRD ANGLE PROJECTION		
DRAWN BY				DRAWING NUMBER:		
JHNU						
DATE				02937NDL - DC		
9/30/22						
CHK				SIZE		
BDK						
SCALE				SHT 1 OF 1		
N.T.S.						
				A		

REV	DATE	BY	CHK	APR	DESCRIPTION	ECN
01	1/28/23	JHNU	JHNU	MRWA	REVISED WIRE RANGE FOR ESV18BXK: 22-18 WAS 22-16 REVISED LISTING FOR ESV14BXK	128553
00	9/30/22	JHNU	BDK	JADE	DRAWING RELEASED	125831

2

1

B

A



D101000A/15