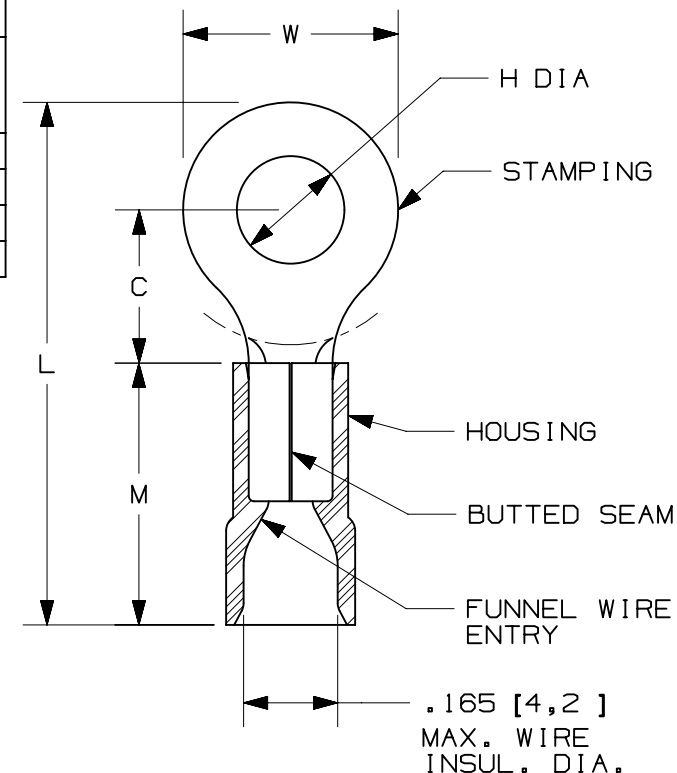


THIS COPY IS PROVIDED ON A RESTRICTED BASIS AND IS NOT TO BE USED IN ANY WAY DETRIMENTAL TO THE INTERESTS OF PANDUIT CORP.

PANDUIT PART #	STUD SIZE		DIMENSIONS in. [mm]				
	ENGLISH	METRIC	L ± .03 [0,8]	W ± .01 [0,3]	C ± .02 [0,5]	M ± .03 [0,8]	H ± .01 [0,3]
EV14-6RBK	#6	M3	.86 [21,8]	.33 [8,5]	.29 [7,4]	.39 [10,0]	.15 [3,7]
EV14-8RBK	#8	M4	.86 [21,8]	.33 [8,5]	.29 [7,4]	.39 [10,0]	.17 [4,3]
EV14-10RBK	#10	M5	.86 [21,8]	.33 [8,5]	.29 [7,4]	.39 [10,0]	.21 [5,3]
EV14-14RBK	1/4"	M6	1.06 [26,8]	.47 [12,0]	.43 [11,0]	.39 [10,0]	.25 [6,4]

NOTES:

- FOR USE WITH:
 - 16-14 AWG [1,5-2,5 mm²] STRANDED COPPER WIRE
 - 221°F [105°C] MAX. OPERATING TEMPERATURE
 - 600V. MAX. BLDG WIRE
(1000 V. MAX. IN SIGNS, FIXTURES & LUMINAIRES)
- MATERIAL:
 - STAMPING: .032" [0,8] THK COPPER, TIN PLATED
 - HOUSING: VINYL, BLUE
- INSTALLATION TOOLS: KST-2000A
- WIRE STRIP LENGTH: 9/32" ^{+1/32}₋₀ [6,8mm ^{+0,8}₋₀]
- SEE www.panduit.com FOR PACKAGE QUANTITIES INDICATED BY PART NUMBER SUFFIX
- DIMENSIONS IN BRACKETS ARE METRIC EQUIVALENT
- PARTS ARE RoHS COMPLIANT



TITLE					
STRONGHOLD RING TERMINALS VINYL INSULATED, BUTTED SEAM #16-14 AWG					
CUSTOMER DRAWING					
ITEM REVISION NAME			02937NEC/01		
DATASET FILE NAME			02937NEC-DC/01		
UNLESS OTHERWISE SPECIFIED, DIMENSIONAL TOLERANCES ARE: IN [mm]			.x ± .1 [2.54] .xxx ± .005 [.13] .xx ± .01 [.25] ANGLES ± 5°		
DRAWN BY JHNU			DATE 9/22		
CHK BDK			SCALE N.T.S.		
MATERIAL: SEE NOTES			DRAWING NUMBER: 02937NEC-DC		
REV			DATE		
BY			CHK		
APR			DESCRIPTION		
ECN			SHEET 1 OF 1		
A			A		