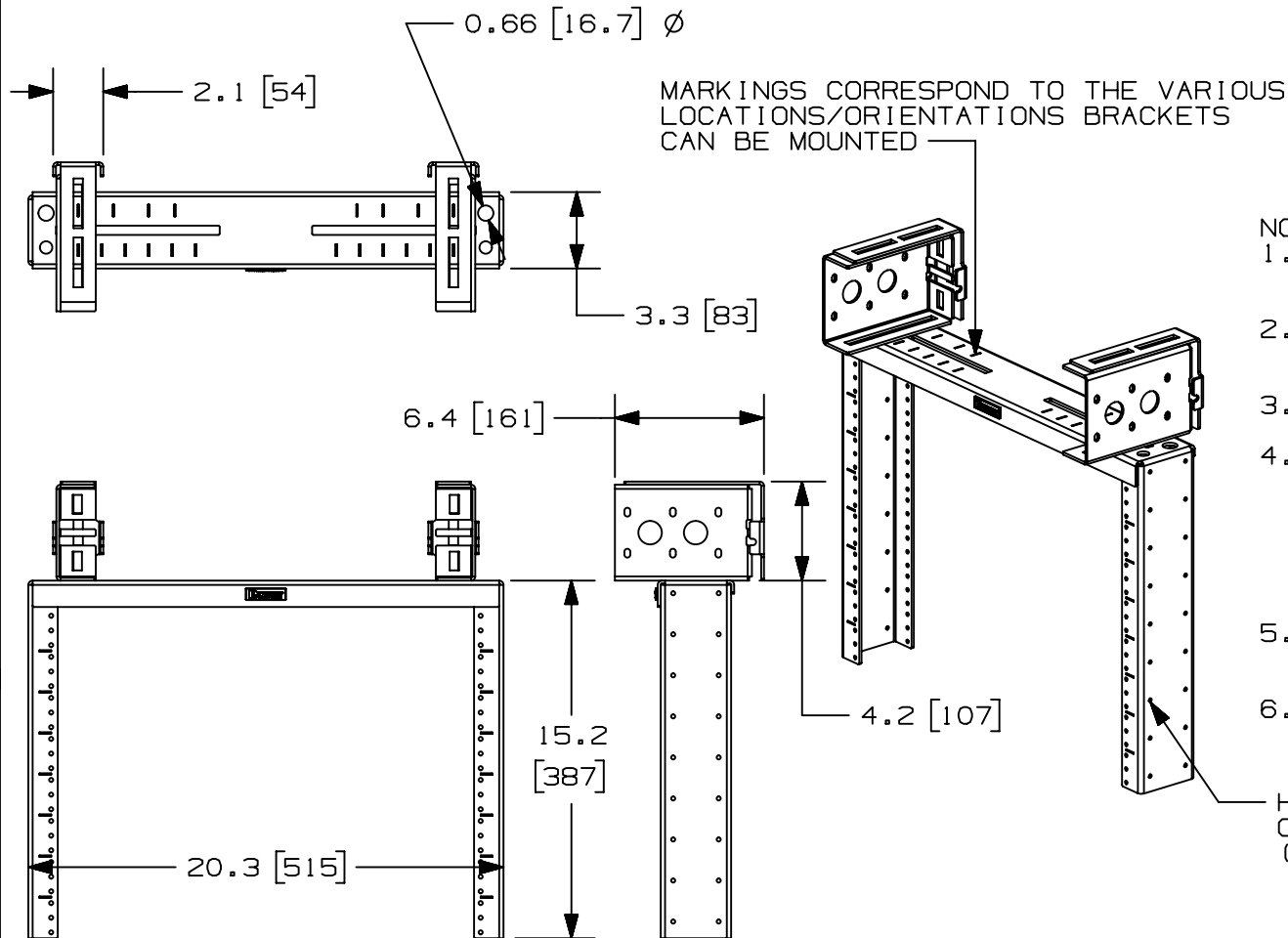


2

1

THIS COPY IS PROVIDED ON A RESTRICTED BASIS AND IS NOT TO BE USED IN ANY WAY DETRIMENTAL TO THE INTERESTS OF PANDUIT CORP.



PANDUIT PART NO.	WEIGHT
PZLRB8U	13.4 lbs/EACH 6.1 kgs/EACH

#### NOTES:

- SEE CURRENT CATALOG FOR ADDITIONAL PART NUMBER SUFFIXES TO INDICATE COLOR AND OR PACKAGE QUANTITY.
- SEE CATALOG FOR COMPLETE LIST OF PARTS APPLICABLE FOR USE WITH THIS PART.
- DIMENSIONS IN PARENTHESES ARE IN METRIC.
- PART INCLUDES:
  - 1- 8RU MAIN BRACKET
  - 2- RECTANGULAR BRACKETS
  - 2- L-SHAPED ATTACHMENT BRACKETS
  - 6- 3-8/16 HEX SERRATED FLANGE NUTS
  - 6- 3-8/16 CARRIAGE BOLTS
  - 8- #12-24 SCREWS (4 PACK)
- CABLE MANAGEMENT OPTIONS:
  - BEND RADIUS POSTS (PZBR4)
  - VERTICAL D-RINGS (CMVDR2)
- STATIC LOAD CAPACITY - 100 lbs

B

B

A

A

TITLE					
PANZONE OVERHEAD DISTRIBUTION RACK (PZLRB8U)					
CUSTOMER DRAWING					
ITEM REVISION NAME			V10521AX/01		
DATASET FILE NAME			V10521AX_DC/01A		
			THIRD ANGLE PROJECTION		
MATERIAL			N/A		
DRAWING NUMBER			V10521AX-DC		
DRAWN BY	DATE	CHK	SCALE	SIZE	
RYB	8-26-20	KRKE	NONE	A	

01A	11-28-22	JBO	KRKE	BETL	C. UPDATED DRAWING TITLE BLOCK B. ADDED NOTE 6, STATIC LOAD CAPACITY A. CHANGED SCREW QTY TO 8	M09000RD
REV	DATE	BY	CHK	APR	DESCRIPTION	ECN

2

1

A-SIZE CUSTOMER