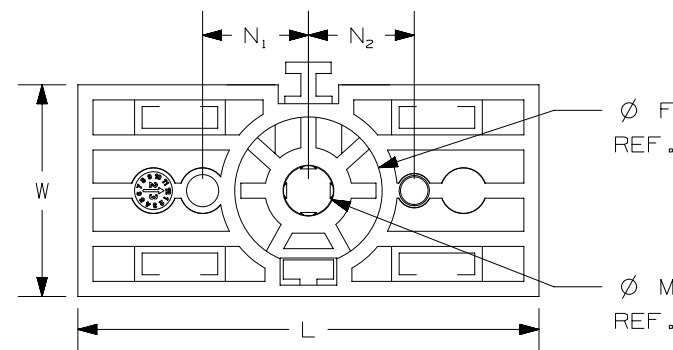
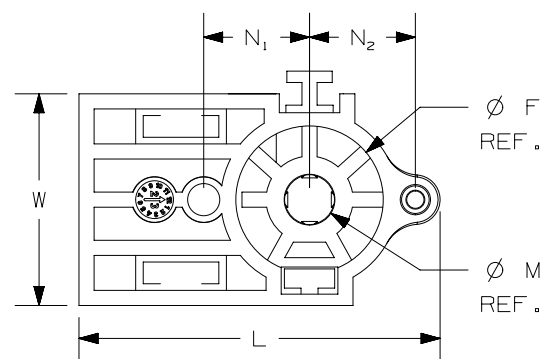
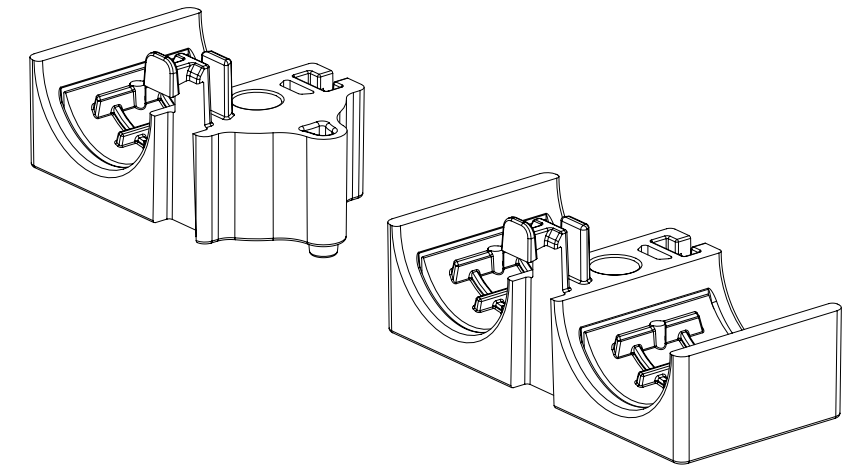
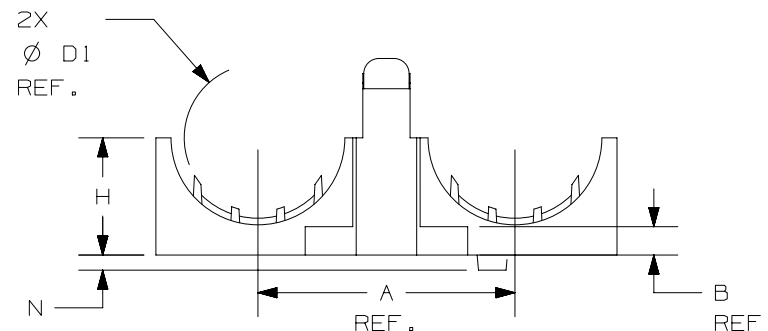
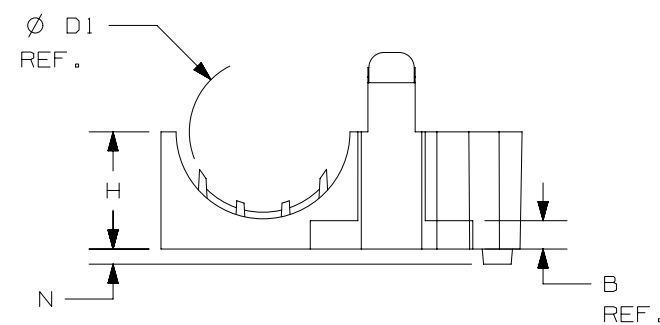


PART NUMBER	CLAMP COLOR	INSERT COLOR	"L"	"W"	"H"	"A" REF.	"B" REF.	Ø D1 REF.	Ø F REF.	Ø M REF.	"N"	"N1" REF.	"N2" REF.	DIAMETER RANGE	REFERENCE CABLE SIZE AWG (mm ²)	WEIGHT GRAMS/100 PC.
HV23CC1-C378	GREY	BLACK	47	28	15.5	N/A	3.8	23	19.5	6.5	2.0	14.0	14.0	19 - 23	3/0-4/0 (85-120)	985
HV23CC2-C378			61			34										1,329
HV19CC1-C370	BLACK		43		N/A	19	3.6	15 - 19						1-2/0 (50-70)	802	
HV19CC2-C370			53		30										1,065	
HV15CC1-C376	BLUE		43		N/A	15	28	11 - 15						4-2 (25-40)	843	
HV15CC2-C376			53		28										1,156	

- NOTES:
- MATERIAL:
 - CLAMP: PA6.6 13% GF HEAT STABLE PER ASTM D4066
 - INSERT: TPV, SHORE 51A
 - FINISH: PLAIN
 - CONTINUOUS OPERATING TEMPERATURE: -40°F TO 275°F
 - ANTI ROTATION NODES: PIN Ø4mm, CUTOUT Ø5mm
 - MAX TORQUE: 10 lbf*ft [13 N*m]
 - DIMENSIONAL VARIANCE IS POSSIBLE DUE TO MOLDING PROCESS RELATED SINK MARKS.
 - QUANTITY OF ONE (1) PART IS AS SHOWN. QUANTITY OF TWO (2) PARTS NEEDED FOR A COMPLETE CLAMP.
 - MOUNTING BOLT SIZE 1/4" (M6) ⓔ



REV	DATE	BY	CHK	APR	DESCRIPTION	ECN
02	3/13/23	MDS	DJSL	GSI	2. UPDATED PART NUMBER TO MATCH COLOR CHANGES ⓐ. ADDED CABLE SIZE COLUMN ⓓ. ADDED NOTE 8 ⓔ.	125915/02
01	2/17/22	DJSL	MDS	GSI	1. UPDATED COLORS FOR CLAMPS ⓐ & INSERTS ⓑ IN TABLE	125915/01
00	11/28/22	DJSL	DAEI	GSI	DRAWING RELEASED	125915/00

TITLE				HIGH VOLTAGE CABLE CLAMP FAMILY			
				CUSTOMER DRAWING			
ITEM REVISION NAME		01110EAA/02		PANDUIT		MATERIAL: SEE NOTE	
DATASET FILE NAME		01110EAA_DC/02					
UNLESS OTHERWISE SPECIFIED, DIMENSIONAL TOLERANCES ARE: IN [mm]				DRAWING NUMBER: 01110EAA_DC			
.x ± .1 [2.54]		.xxx ± .005 [.127]		THIRD ANGLE PROJECTION		SHT 1 OF 1	
.xx ± .01 [.25]		ANGLES ± 1°		DRAWN BY DJSL		DATE 11/28/22	
				CHK		SCALE NONE	
						SIZE B	