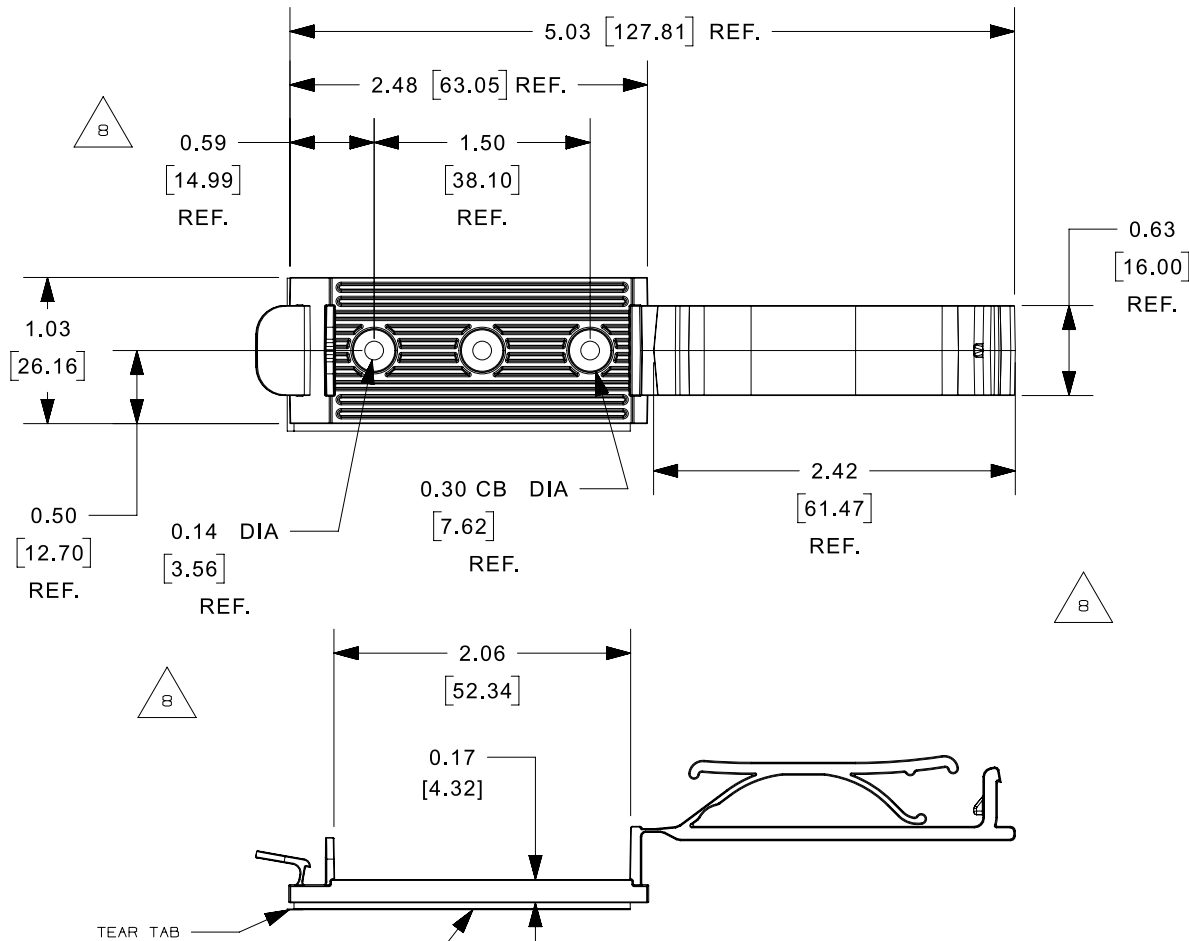


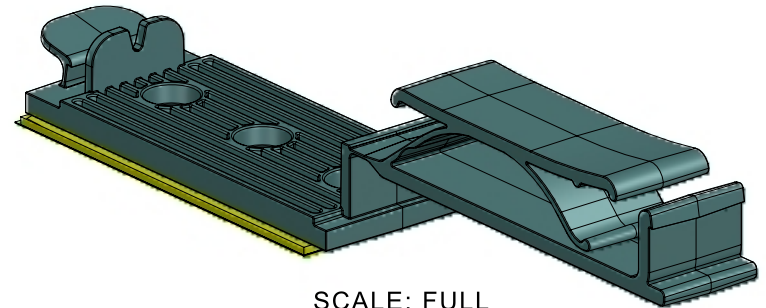
THIS COPY IS PROVIDED ON A RESTRICTED BASIS AND IS NOT TO BE USED IN ANY WAY DETRIMENTAL TO THE INTERESTS OF PANDUIT CORP.



PANDUIT PART NO.	WEIGHT lbs/100 pcs. (g)/100 pcs.
FCH2-S6	2.40
FCH2-A	[1089.60]

NO WARRANTY, EXPRESSED OR IMPLIED, IS MADE BY PANDUIT WITH RESPECT TO ADHESIVE BOND PERFORMANCE. AMONG OTHER THINGS, THE CONDITIONS UNDER WHICH THESE MOUNTS MAY BE APPLIED, AND/OR THE SURFACE TO WHICH THEY MAY BE APPLIED, ARE BEYOND PANDUIT'S CONTROL.

S6 PART IS WITHOUT ADHESIVE BACKING.



SCALE: FULL

ADHESIVE BACKING (FCH2-A ONLY)

PRESSURE SENSITIVE FOAM TAPE 0.040(1.02) THICK WITH RUBBER ADHESIVE AND PROTECTIVE LINER. MOUNT IS DESIGNED TO SUPPORT 1.28lbs. (581.7g) MAXIMUM WEIGHT ON A CLEAN, DRY, SMOOTH, GREASE-FREE SURFACE.

TO APPLY FLAT CABLE HOLDER:

1. REMOVE PROTECTIVE LINER
2. PLACE IN DESIRED LOCATION
3. APPLY PRESSURE TO THE TOP OF FLAT CABLE HOLDER.

DIMENSIONS IN BRACKETS ARE METRIC

TITLE	
FCH2-A, FCH2-S6 FLAT CABLE HOLDER	
CUSTOMER DRAWING	
ITEM REVISION NAME	G03597FP/02
DATASET FILE NAME	G03597FP_DC_GB0239FH_08/02
UNLESS OTHERWISE SPECIFIED, DIMENSIONAL TOLERANCES ARE: IN [mm]	
.x ± 0.05 [1.3]	.xxx ± 0.010 [0.25]
.xx ± 0.02 [0.5]	ANGLES ± 5 °
THIRD ANGLE PROJECTION	
DRAWN BY	JAD
DATE	10/1/97
CHK	JADE
SCALE	3/4
PANDUIT	
MATERIAL: NYLON 6/6	
DRAWING NUMBER: GB0239FH	
DRAWN BY	JAD
DATE	10/1/97
CHK	JADE
SCALE	3/4
SHT 1 OF 1	
A	

REV	DATE	BY	CHK	APR	DESCRIPTION	ECN
8	7/28/2021	RVU	JADE	RMHI	REBUILD MODEL AND UPDATE VIEWS.	GAECN05798
7	1/22/14	BDK	VJS	JADE	ADDED PART NUMBER FCH2-S6 AND S6 NOTE	GB0239FH
6	7/6/04	JAD			UPDATED PICTORIALY	GB0239FH
5	5/10/02	LGG			ADDED ADHESIVE BACKING NOTE	GB0239FH

D101000DA/16