



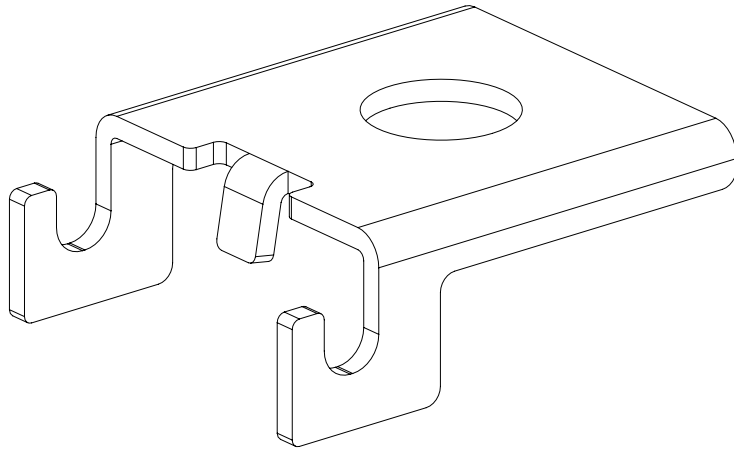
PANDUIT WIRE BASKET TRAPEZE SUPPORT BRACKET

Part Numbers: PWBTSB**

©Panduit Corp. 2020

INSTALLATION INSTRUCTIONS

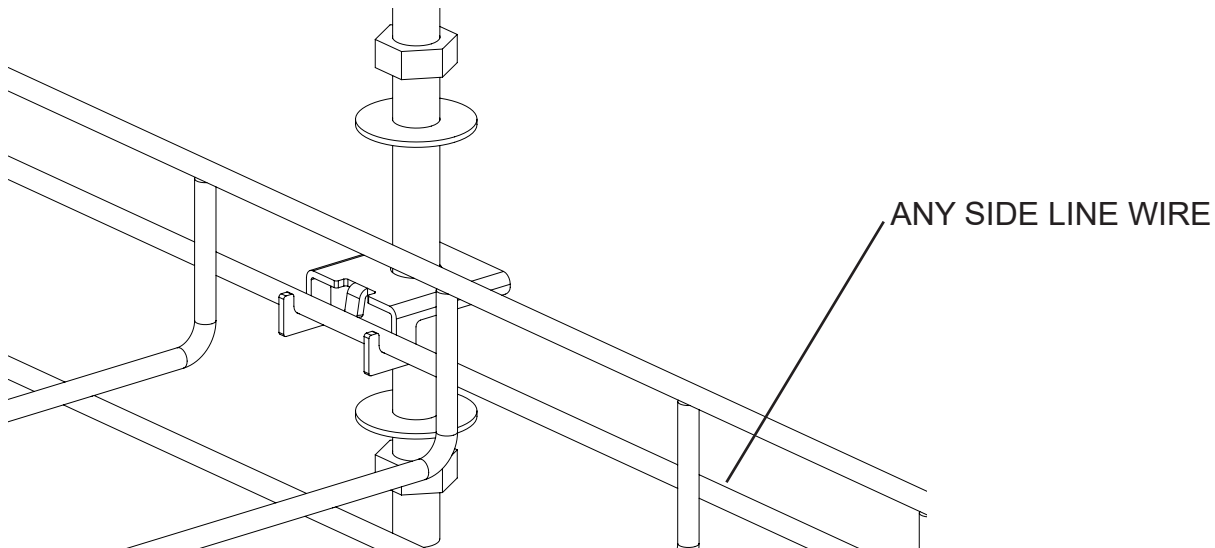
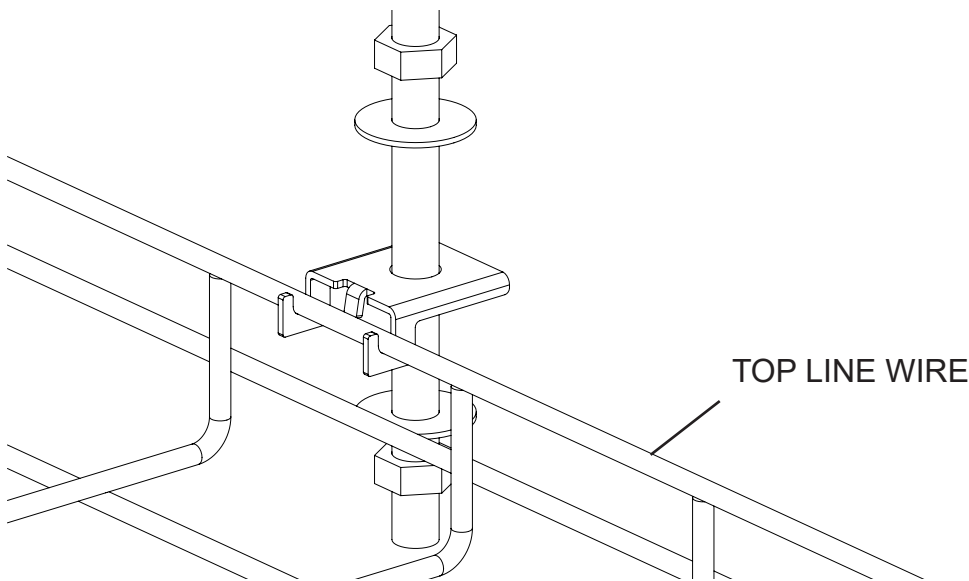
FS175



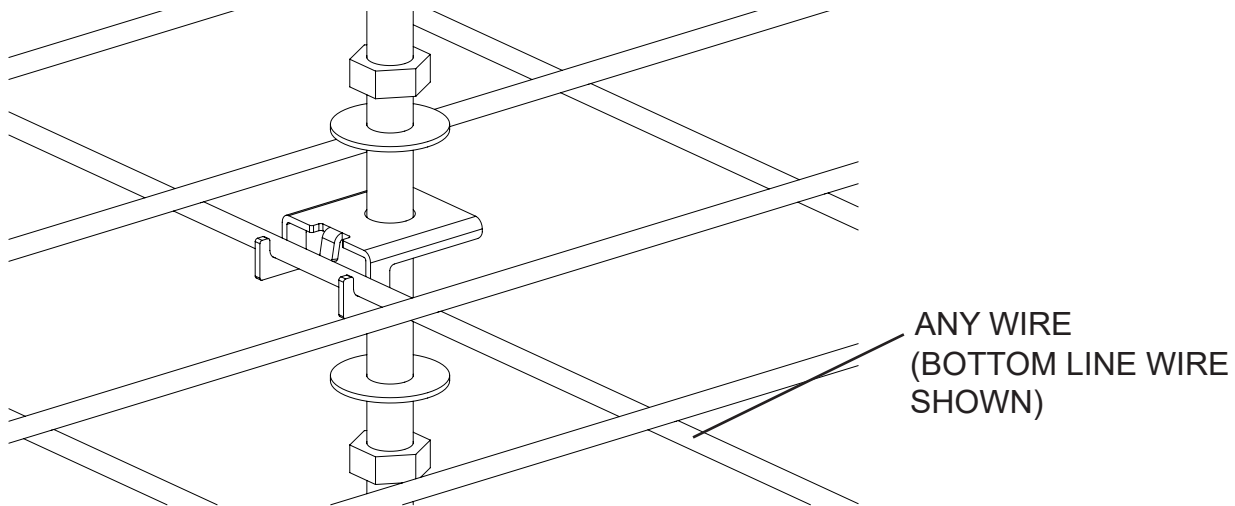
THREADED ROD, WASHERS, AND NUTS NOT INCLUDED.

PART NUMBER INCLUDES 50 PIECES TRAPEZE SUPPORT BRACKETS.

TYPICAL LOCATION IS ANY SIDE LINE WIRE BUT THIS CAN BE APPLIED TO ANY LINE WIRE (PARALLEL WITH THE BASKET).



For Technical Support: www.panduit.com/resources/install_maintain.asp

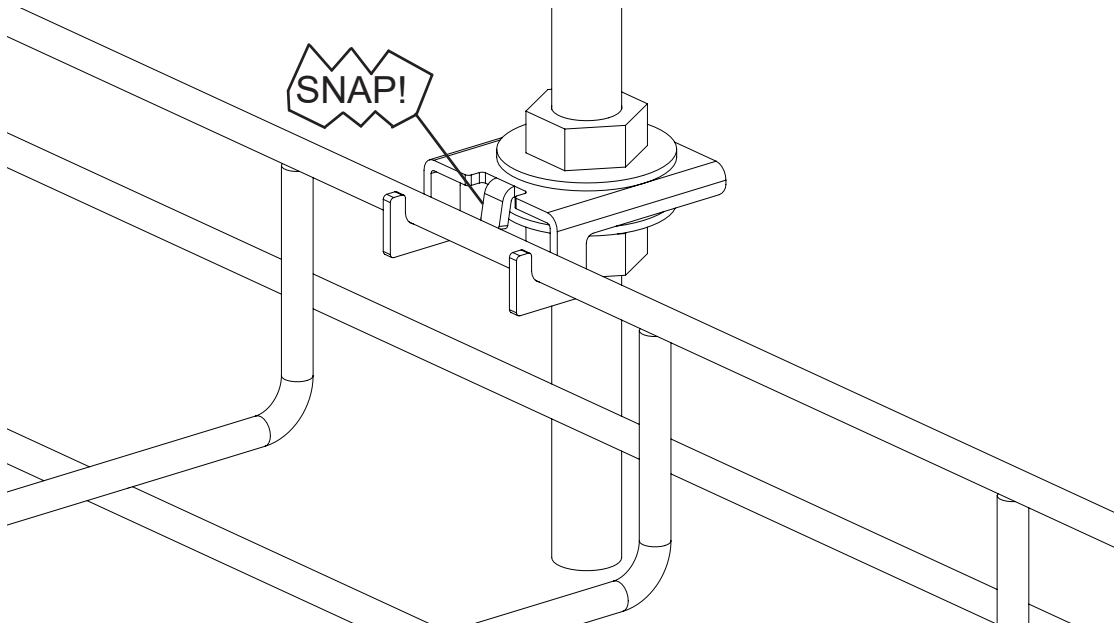


USE ONLY 1/2" OR 12MM THREADED ROD WITH THE TRAPEZE SUPPORT BRACKET.

BEST PRACTICE RECOMMENDATION IS TO USE A THREADED ROD COVER (TRC18FR-X20Y)
*SOLD SEPARATELY.

LOAD NOT TO EXCEED 250 LBS. PER PWBTSB**

SPECIFIC APPLICATIONS OR LOAD CONDITIONS CAN VARY AND MAY REQUIRE ADDITIONAL
SUPPORTS OR PLACEMENT ADJUSTMENTS TO ACCOMMODATE ACTUAL INSTALLATION
NEEDS.



For Instructions in Local Languages
and Technical Support:

http://www.panduit.com/resources/install_maintain.asp

PANDUIT
www.panduit.com

E-mail:
techsupport@panduit.com

Phone:
866-405-6654