

Category 6 Shielded Keystone Jack Module

SPECIFICATIONS

The Category 6/Class E, 8-position, shielded jack modules shall terminate 4-pair, 22 AWG – 26 AWG, 100 ohm shielded twisted pair cable. The shielded jack modules shall utilize a standard punchdown tool to properly terminate conductors for optimum performance. The shielded jack modules shall include universal labeling for T568A and T568B wiring schemes, and shall be individually serialized for traceability. The shielded jacks shall be 100% tested for component performance.



TECHNICAL INFORMATION

Category 6/Class E channel and component performance:	Exceeds ANSI/TIA-568.2-E Category 6 and ISO 11801 Class E channel requirements at swept frequencies up to 250 MHz Exceeds ANSI/TIA-568.2-E and ISO 11801 Category 6 component requirements at swept frequencies up to 250 MHz
Conductor termination range:	Standard wire cap compatible with 22 AWG – 26 AWG solid or stranded cable with conductor insulation diameters of 0.06 in. (1.5mm) max and overall cable O.D. 0.20 in. – 0.33 in. (5.08mm – 8.38mm)
FCC and ANSI compliance:	Meets ANSI/TIA-1096-A; contacts plated with 50 microinches of gold for superior performance
IEC compliance:	Meets IEC 60603-7 and IEC 60512-99-002
PoE and PoH compliance:	Meets IEEE 802.3af/802.3at and 802.3bt type 3 and type 4 Supports Power over HDBaseT up to 100 watts
c(UL)us listed:	UL 1863 (Use as communications circuit accessory) CSA standard C22.2 UL 2043 (Suitable for use in air-handling spaces)
Operating temperature:	14°F to 167°F (-10°C to 75°C)
RoHS compliance:	Compliant

KEY FEATURES AND BENEFITS

100% performance tested:	Confidence that each jack module will deliver the critical electrical performance requirements
Integral shield:	Provides a 360° conductive path to ground shielded jack module with no additional assembly required
Industry standard termination tool:	Single wire 110 punchdown tool (PDT110) ensures conductors are fully terminated
Individually serialized:	Marked with quality control number for future traceability
RJ45 interface:	Industry standard interface provides a quick and easy plug and play connection to RJ45 patch cords; backwards compatible
Robust construction:	Rated to 2,500 mating cycles

Shielded Keystone Jack Modules

Jack module:	SKJ688BL
Jack module, pack of 100:	SKJ688BL-C

Shielded Keystone Patch Panels

1 RU, flat:	SKPP24BL
1 RU, angled:	SKPPA24BL

Shielded Keystone Patch Cord

Category 6:	S6PC^M*
--------------------	---------

^*See specification sheet for length and color options



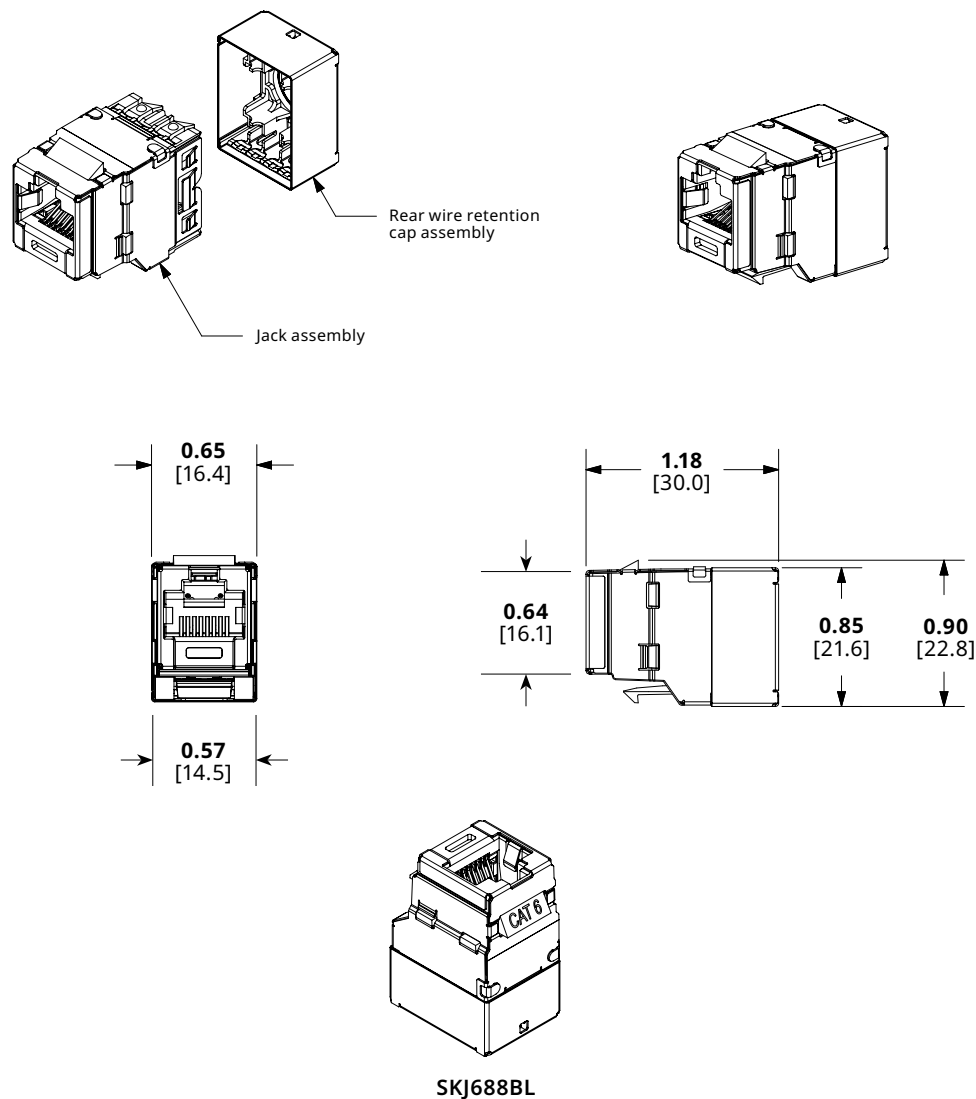
All listed part numbers are compliant with the U.S. Trade Agreements Act (TAA) for purchases shipped to customers in the United States.

Category 6 Shielded Keystone Jack Module

APPLICATIONS

Shielded Keystone Jack Modules are a component of the Shielded Keystone Copper Cabling System. This end-to-end system provides a cost effective medium for ensuring that network bandwidth needs are easily met today and tomorrow. This shielded system provides excellent EMI suppression and aids in secure data transmission. This solution helps ensure organizations efficiently and reliably meet their data transmission needs. The Keystone form factor allows for easy interoperability with other shielded solutions designed to the keystone standard. With certified performance to the ISO 11801 Class E, and ANSI/TIA-568.2-E Category 6 standards, this system will support applications such as Ethernet 10BASE-T, 100BASE-T (Fast Ethernet), 1000BASE-T (Gigabit Ethernet), digital video and broadband/baseband analog video, Voice over Internet Protocol (VoIP), and more.

ENGINEERING DRAWINGS



Dimensions are in inches. [Dimensions in brackets are metric].