

- SPECIFICATION**
- STANDARD:
    - UNIT TYPE: MSPO
    - ORIENTATION: VERTICAL, OU FULL
    - OUTLET QTY & TYPE: (24)C13/C15, (24)C13/C15/C19/C21
    - INPUT VOLTAGE: 200-240/346-415VAC
    - INPUT CURRENT: 60A (48A DERATED) / 63A
    - BREAKER QTY & TYPE: (12) 20AMP, SINGLE-POLE
    - INPUT PHASE: 3 PHASE WYE, L-N
    - RATED POWER: DUAL-RATED: 34.6 / 43.5 KVA
    - INPUT PLUG: IEC 60309 3P+N+E 6h 60/63A (IP44)
    - REGULATORY STANDARD: RoHS COMPLIANT
  - ADDITIONAL:
    - CORD TYPE: 5W 6AWG SOOW & 16MM<sup>2</sup>H07RN-F
  - ACCESSORIES:
    - PRODUCT SAFETY WARNING SHEET

- NOTES**
- PRIMARY DIMENSIONS ARE IN MILLIMETERS, SECONDARY DIMENSIONS IN [INCHES]
  - FOR FULL PRODUCT FUNCTIONLTY REFER TO THE USER MANUAL.

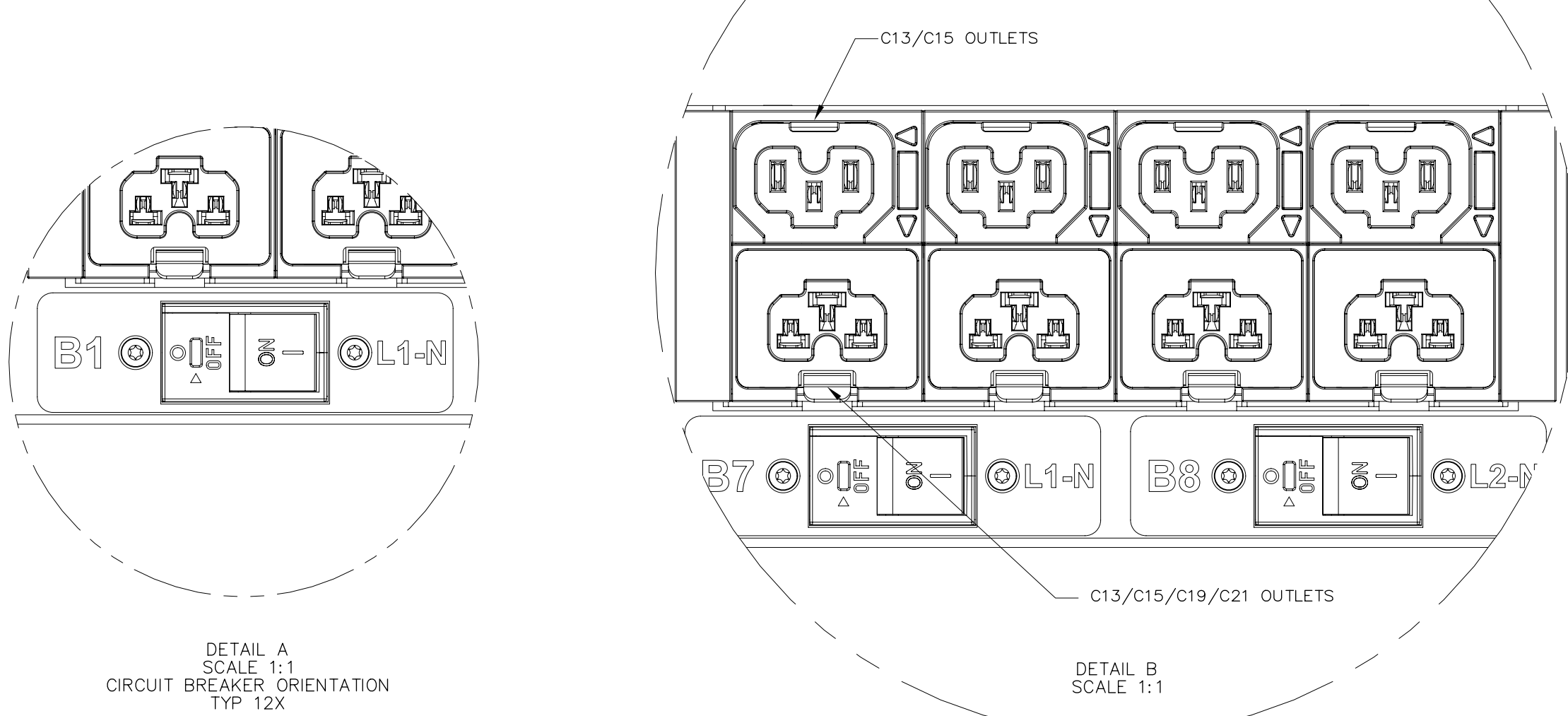
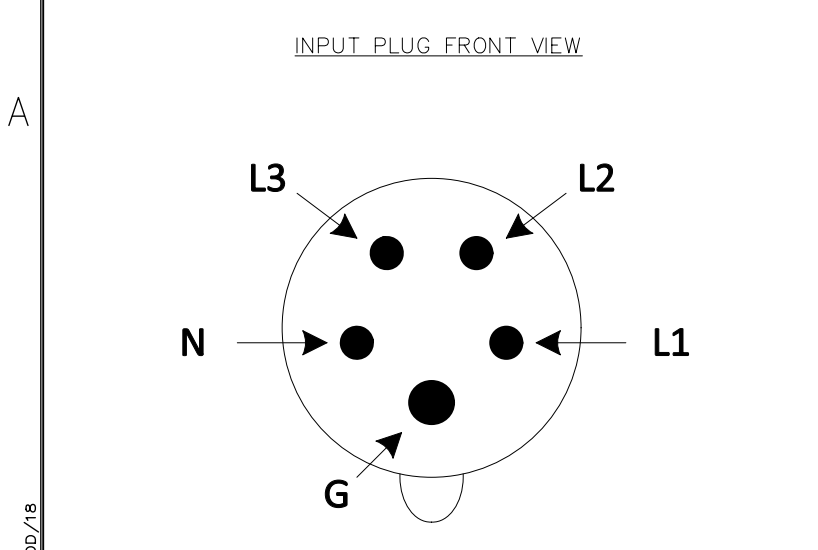


TABLE 1

PART NUMBER	DESCRIPTION	DIM A	COLOR (-XX)	SHIPPING WEIGHT (KG)
E48G01L	EL2P MSPO PDU, 60/63AMP, (24)C13/C15, (24)C13/C15/C19/C21, IEC 60309 3P+N+E 6h 60A/63A (IP44)	3000 +254/-127 [118.1 +10/-5]	BLACK (RAL 9005)	15.7



**PANDUIT**  
 18900 Panduit Drive, 60487, USA  
 www.panduit.com

**Power Distribution Unit**

SKU #: E48G01L-BLSC  
 Model #: E2Y063C0(EU)/E2Y048C0(NA)  
 INPUT: 200-240/346-415VAC, WYE, 3Ø, 50/60Hz, 63A(EU), OR 200-240/346-415VAC, WYE, 3Ø, 50/60Hz, 48A(NA)  
 OUTPUT: C13: 200-240VAC, 10A per outlet  
 C19: 200-240VAC, 16A per outlet  
 63A Total(EU) OR 48A Total(NA)

NOM NYCE FC CE  
 CAN ICES-003(A)/NMB-003(A)

SKU: E48G01L-BLSC  
 SN: XXXXXXXXXXXX  
 MAC: XXXXXXXXXXXX  
 Made in China

REV	DATE	BY	CHK	APR	DESCRIPTION	ECN	SCALE	SHT	OF	SIZE
00A	02/06/2025	LLJ	GLM	MJD	RELEASE TO PRODUCTION	E48G01L	3:10	1	1	D