

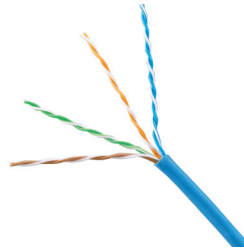
# TX5500™ Category 5e Copper Cable – UTP

# PANDUIT®

## SPECIFICATION SHEET

## specifications

Category 5e cable shall exceed ANSI/TIA-568-C.2 and IEC 61156-5 Category 5e component standards. The conductors shall be 24 AWG copper insulated with HDPE. The copper conductors shall be twisted in pairs and all four pairs shall be covered by a low smoke zero halogen (LSZH) jacket.



## technical information

<b>Electrical performance:</b>	Certified channel performance in a 4-connector configuration up to 100 meters and exceeds the requirements of ISO 11801 Class D and ANSI/TIA-568-C.2 Category 5e standards at swept frequencies up to 100 MHz  Certified component performance up to 100 meters and exceeds the component requirement of the IEC 61156-5 and ANSI/TIA-568-C.2 Category 5e component standards at swept frequencies up to 100 MHz
<b>Conductors/insulators:</b>	24 AWG solid copper insulated with HDPE
<b>Flame rating:</b>	LSZH – IEC 60332-3-25 (-3d), IEC 60754-1 and -2, IEC 61034-2, NBN C 30-004 (F2) EN50575: Euroclass Dca – s1a, d2, a1
<b>PoE compliance/Installation tension:</b>	Meets IEEE 802.3af and IEEE 802.3at for PoE applications 110 N (25 lbf) maximum
<b>Temperature rating:</b>	0°C to 50°C (32°F to 122°F) during installation -20°C to 75°C (-4°F to 167°F) during operation
<b>Cable jacket:</b>	LSZH – Low Smoke Zero Halogen
<b>Cable diameter:</b>	5.2mm (0.205 in.) nominal
<b>Cable weight:</b>	10 kg/305m (22 lbs./1000 ft.)
<b>Packaging:</b>	305m (1000 feet) or 500m (1640 feet) on a reel Package tested to ISTA Procedure 1A

## key features and benefits

<b>Third party tested</b>	Cable has been tested as part of the TX5500™ Category 5e U/UTP Copper Cabling System by an independent laboratory and complies with the electrical channel requirements of ANSI/TIA-568-C.2 Category 5e and ISO 11801 Class D standards
<b>Descending length cable markings</b>	Easy identification of remaining cable reduces installation time and cable scrap
<b>Tested beyond the standards</b>	Cable has been characterized to 450 MHz, 350 MHz above the standard
<b>Packaged on a reel</b>	Ensures proper performance and provides quick installation

## applications

TX5500™ U/UTP Copper Cable is a component of the Panduit® TX5500™ U/UTP Copper Cabling System. This end-to-end system provides Gigabit Ethernet performance with usable bandwidth beyond 100 MHz. With certified performance to the ANSI/TIA-568-C.2 Category 5e and ISO 11801 Class D standards, this system will support the following applications:

- Ethernet 10BASE-T, 100BASE-T (Fast Ethernet), 1000BASE-T (Gigabit Ethernet)
- 155 Mb/s ATM, 622 Mb/s ATM
- Token ring 4/16

[www.panduit.com](http://www.panduit.com)

**TX5500™ UTP  
Copper Cabling System**

**TX5500™ UTP Copper Cable**

**LSZH:** PUZ5504\*

**Mini-Com® TX5e™  
PLUS UTP Jack Module**

**Jack Module:** CJ5E88TGIW\*\*

**TX5e™ UTP Patch Cords – LSZH**

**Meter lengths:** UTPCHL1^MY

**DP5e™ Angled Punchdown  
Patch Panels**

**24-port, 1 RU:** DPA245E88TGY

**48-port, 2 RU:** DPA485E88TGY

**DP5e™ Flat Punchdown  
Patch Panels**

**12-port, 1RU:** DP125E88TGY

**24-port, 1 RU:** DP245E88TGY

**48-port, 2 RU:** DP485E88TGY

**Mini-Com® Angled Flush Mount  
Modular Patch Panels**

**24-port, 1 RU:** CPPA24FMWBLY

**48-port, 2 RU:** CPPA48FMWBLY

**Mini-Com® Flat Flush Mount  
Modular Patch Panels**

**24-port, 1 RU:** CPP24FMWBLY

**48-port, 2 RU:** CPP48FMWBLY

**Termination and Cable Prep Tools**

**Termination tools:** EGJT or TGJT

**Wire snipping tool:** CWST

**Wire stripping tool:** CJAST

\*Color and pallet configurations:  
Replace \* with BU-CEG (Blue) or WH-CEG (White) to designate that color in a Euro pallet of 24 reels, 305m each.  
Replace \* with BU-CED (Blue) or WH-CED (White) to designate that color in a Euro pallet of 18 reels, 500m each.

\*\*To designate color, change IW (Off White) to AW (Arctic White), EI (Electric Ivory), IG (International Gray), WH (White), BL (Black), OR (Orange), RD (Red), BU (Blue), GR (Green), YL (Yellow), or VL (Violet).  
Add -24 to end of part number for 24-pack convenience package.

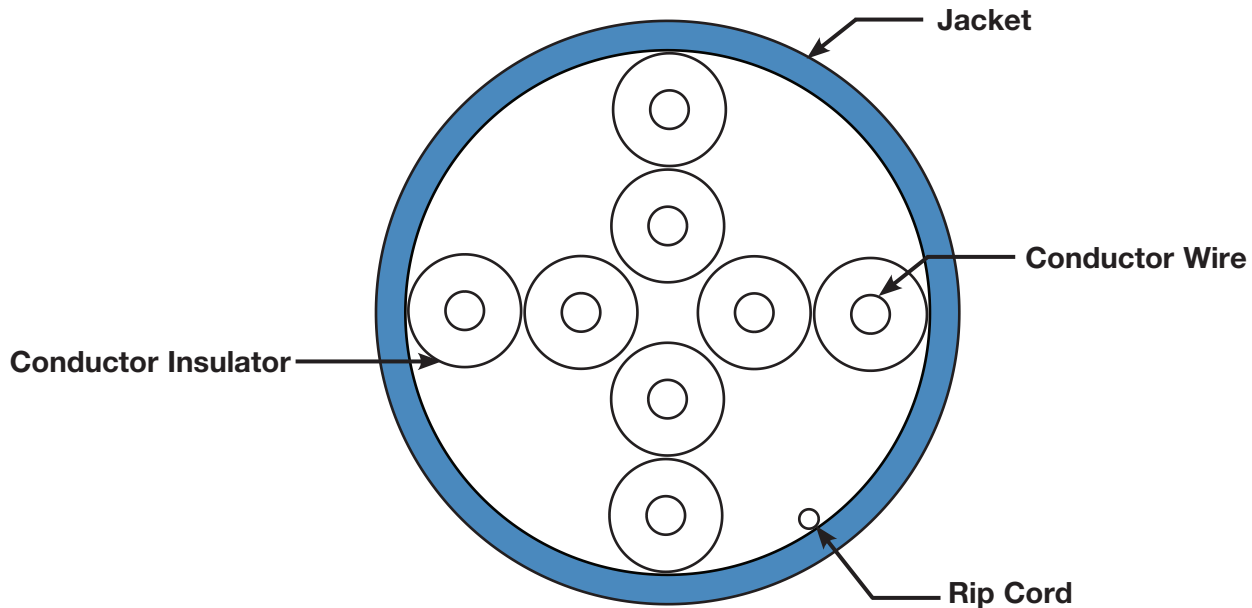
^For standard meter lengths other than 1 meter, replace the 1 in the part number with 1 – 10 meters (one meter increments), 0.5, 1.5, 2.5, 15, or 20. For standard colors other than Off White, add suffix BU (Blue), RD (Red), YL (Yellow), or GR (Green) before Y at the end of the part number. For example, the part number for a blue 5-meter patch cord is UTPCHL5MBUY.

# TX5500™ Category 5e Copper Cable – UTP

## additional specifications

Mechanical Test	
Ultimate Breaking Strength	>400 N (90 lbf.)
Minimum Bend Radius	4 x cable diameter
Electrical Test	
Nominal Velocity of Propagation (NVP)	65%
Operating Voltage, Maximum	80V

## cable construction



### WORLDWIDE SUBSIDIARIES AND SALES OFFICES

PANDUIT CANADA  
Phone: 800.777.3300

PANDUIT EUROPE LTD.  
London, UK  
cs-emea@panduit.com  
Phone: 44.20.8601.7200

PANDUIT SINGAPORE PTE. LTD.  
Republic of Singapore  
cs-ap@panduit.com  
Phone: 65.6305.7575

PANDUIT JAPAN  
Tokyo, Japan  
cs-japan@panduit.com  
Phone: 81.3.6863.6000

PANDUIT LATIN AMERICA  
Guadalajara, Mexico  
cs-la@panduit.com  
Phone: 52.33.3777.6000

PANDUIT AUSTRALIA PTY. LTD.  
Victoria, Australia  
cs-aus@panduit.com  
Phone: 61.3.9794.9020

For a copy of Panduit product warranties, log on to [www.panduit.com/warranty](http://www.panduit.com/warranty)

For more information

Visit us at [www.panduit.com](http://www.panduit.com)

Contact Customer Service by email: [cs@panduit.com](mailto:cs@panduit.com)  
or by phone: 800.777.3300

**PANDUIT**®

© 2017 Panduit Corp.  
ALL RIGHTS RESERVED.  
COSP333--WW-ENG  
Replaces WW-COSP218  
6/2017