



Project: **Gripple Hangers**

Client: **Gripple Limited**

Office: **Coventry**

Clients Order Number: **9688**

Date: **29 June 2005**

Order Status: **Incomplete**

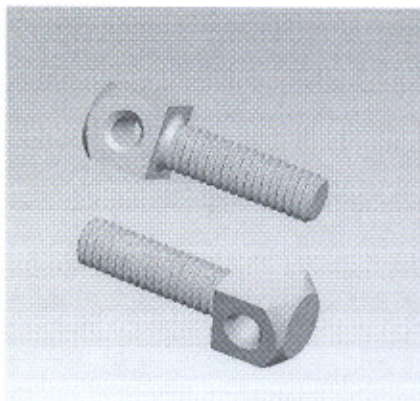
Inspection Dates

First: **23 June 2005**

Final: **23 June 2005**

This certificate is issued to **Gripple Limited** to certify that the undersigned Surveyor did, at their request, attend their works at **The Old West Gun Works, Sheffield** between the above dates for the purpose of examining and witnessing tests on the item stated below :

TEST CONFIGURATION



Gripple Model	Rope Construction	Gripple Rated Load (Kg)	Gripple Working Load Limit 5:1 (Kg)	Result (Kg)
M8 Adaptor Stud	7x7 (6/1)	0 - 225	1125	1525

Continued on Page 2 of 2...

Lloyd's Register, its affiliates and subsidiaries and their respective officers, employees or agents are, individually and collectively, referred to in this clause as the 'Lloyd's Register Group'. The Lloyd's Register Group assumes no responsibility and shall not be liable to any person for any loss, damage or expense caused by reliance on the information or advice in this document or howsoever provided, unless that person has signed a contract with the relevant Lloyd's Register Group entity for the provision of this information or advice and in that case any responsibility or liability is exclusively on the terms and conditions set out in that contract.

Scope Of Survey

- Verify test configuration.
- Witness tensile test.
- Verify calibration status of test equipment.

On the basis of the scope of inspection undertaken, the material/equipment has been found to comply with the order and specification requirements.



Malcolm Matthias
Surveyor to Lloyd's Register EMEA

A member of the Lloyd's Register Group

