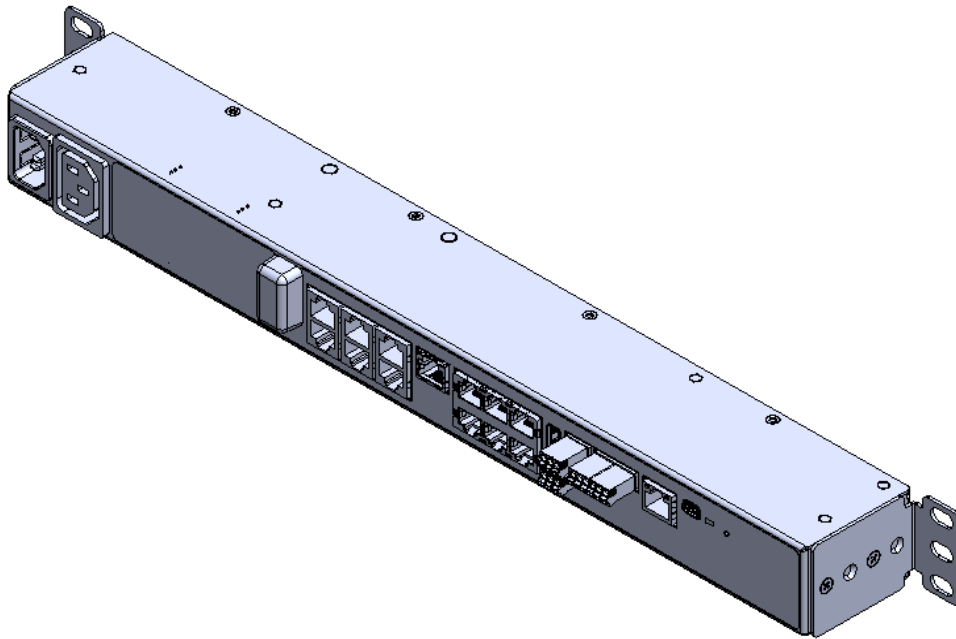


Product End of Life Instructions

Netbotz Rack Mount Appliance





Potential disassembly risks

The information provided in this document assumes that the product is completely de-energized and uninstalled (refer to the instructions provided in the appropriate product manuals).

Dismantling/disassembling the product may entail hazards caused by, for example, sharp edges, chemical aggression or ejected parts.

⚠ WARNING

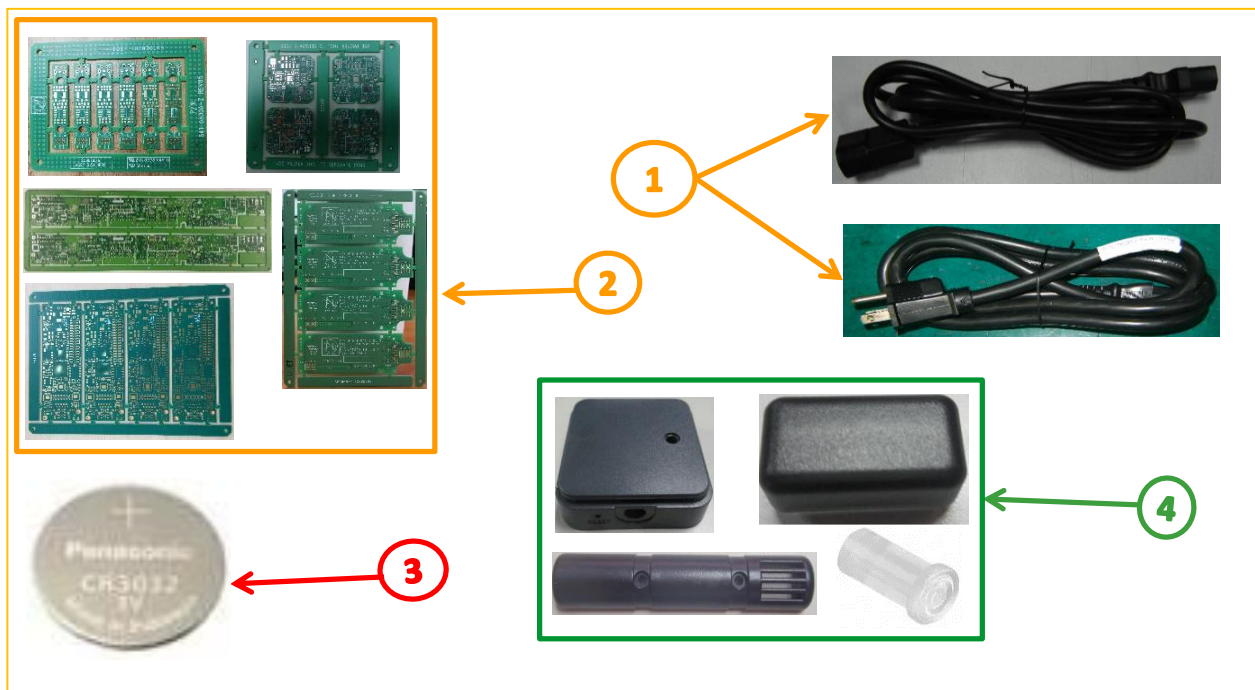
HAZARD DUE TO INSUFFICIENT PROTECTION

- Implement all safety measures required by the applicable regulations and by the processes used to dismantle/disassemble and dispose of the product.
- Use all necessary personal protective equipment such as gloves and goggles.

Failure to follow these instructions can result in death or serious injury.



End of Life Instructions



| Recommendation | Number on drawing | Component / Material | Weight (in g) | Comment |
|-------------------|-------------------|--|---------------|-----------------------|
| To be depolluted | 1 | Power Cord Cable | 772 | Cables |
| To be depolluted | 2 | Electronic Communication Board | 325.8 | PCBA |
| Potential hazards | 3 | Coin Batteries | 9.65 | 2 x Lithium Battery |
| Other | 4 | Screw, Bracket, Clip, Retainer, Enclosure, Housing | 161.9 | Metal & Plastic Parts |

Product description

| | |
|---------------------------------------|---|
| Manufacturer identification | Schneider Electric Industries SAS |
| Brand name | Schneider Electric |
| Product function | NetBotz Rack Mount Appliance is a rack-mountable central hardware appliance for an environmental monitoring and control system that is used to monitor and control devices installed in data center application |
| Product reference | NBRK0250ATAA |
| Additional similar product references | NBRK0750TAA, NBWL0755TAA, NBRK0250A, NBRK0750, NBWL0755 |
| Total representative product mass | 1270 g |
| Representative product dimensions | 432 mm x 43.6 mm x 59.2 mm |
| Accessories | No special accessories needed |
| Date of information release | 03-2025 |

Additional information

| | |
|--|--|
| Legal information | This product family is in the scope of European Union directive 2012/19/EU on Waste Electrical and Electronic Equipment (WEEE). The product family must be disposed according to the legislation of the country. This document is intended for use by end of life recyclers or treatment facilities. It provides the basic information to assure an appropriate end of life treatment for the components and materials of the product. |
| In case of special transportation: transportation method | No special transportation is required |
| Recyclability potential | 50% <p>The recyclability rate was calculated from the recycling rates of each material making up the product based on REEECY'LAB tool developed by Ecosystem, for components/materials not covered by the tool, data from the EIME database and the related PSR was taken. If no data was found a conservative assumption was used (0% recyclability).</p> |

Schneider Electric Industries SAS

Country Customer Care Center
<http://www.se.com/contact>

35, rue Joseph Monier

CS 30323

F- 92500 Rueil Malmaison Cedex

RCS Nanterre 954 503 439

Capital social 928 298 512 €

www.se.com

Published by Schneider Electric

ENVEOLI2503037_V1

© 2023 - Schneider Electric – All rights reserved

03-2025