

# Wiser Smoke Alarm - Battery

## Device user guide

Information about features and functionality of the device.

10/2022

# Legal Information

The Schneider Electric brand and any trademarks of Schneider Electric SE and its subsidiaries referred to in this guide are the property of Schneider Electric SE or its subsidiaries. All other brands may be trademarks of their respective owners.

This guide and its content are protected under applicable copyright laws and furnished for informational use only. No part of this guide may be reproduced or transmitted in any form or by any means (electronic, mechanical, photocopying, recording, or otherwise), for any purpose, without the prior written permission of Schneider Electric.

Schneider Electric does not grant any right or license for commercial use of the guide or its content, except for a non-exclusive and personal license to consult it on an "as is" basis. Schneider Electric products and equipment should be installed, operated, serviced, and maintained only by qualified personnel.

As standards, specifications, and designs change from time to time, information contained in this guide may be subject to change without notice.

To the extent permitted by applicable law, no responsibility or liability is assumed by Schneider Electric and its subsidiaries for any errors or omissions in the informational content of this material or consequences arising out of or resulting from the use of the information contained herein.

---

# Table of Contents

Safety information .....	4
Wiser Smoke Alarm-Battery .....	5
For your safety .....	5
About the device .....	5
Installing the device .....	6
Pairing the device .....	7
Setting up connection without Wiser Hub .....	9
Interconnecting devices without Wiser Hub .....	9
Disconnecting a secondary device .....	10
Testing the device .....	11
Testing the individual device .....	11
Testing the interconnected device(s) .....	11
Configuring the device .....	12
Renaming the device .....	12
Changing the device location .....	13
Removing the device .....	14
Resetting the device manually .....	14
Using the device .....	15
Checking the device history .....	15
Setting LED brightness .....	16
Silencing the device .....	18
Snoozing the device alerts .....	19
False alarm .....	19
Creating an automation .....	20
Maintenance and cleaning .....	29
LED Indications .....	30
Troubleshooting .....	31
Technical Data .....	31

# Safety information

## Important information

Read these instructions carefully and look at the equipment to become familiar with the device before trying to install, operate, service, or maintain it. The following special messages may appear throughout this manual or on the equipment to warn of potential hazards or to call attention to information that clarifies or simplifies a procedure.



The addition of either symbol to a “Danger” or “Warning” safety label indicates that an electrical hazard exists which will result in personal injury if the instructions are not followed.



This is the safety alert symbol. It is used to alert you to potential personal injury hazards. Obey all safety messages that accompany this symbol to avoid possible injury or death.

### **DANGER**

**DANGER** indicates a hazardous situation which, if not avoided, **will result in** death or serious injury.

**Failure to follow these instructions will result in death or serious injury.**

### **WARNING**

**WARNING** indicates a hazardous situation which, if not avoided, **could result in** death or serious injury.

### **CAUTION**

**CAUTION** indicates a hazardous situation which, if not avoided, **could result in** minor or moderate injury.

### **NOTICE**

NOTICE is used to address practices not related to physical injury.

# Wiser Smoke Alarm-Battery



CCT599002

## For your safety

### **NOTICE**

#### **EQUIPMENT INSTALLATION HAZARD**

- Always operate the product in compliance with the specified technical data.
- Keep the installation instruction for the life of the product.

**Failure to follow these instructions can result in equipment damage.**

### **⚠ WARNING**

#### **SEALED BATTERY HAZARD**

Do not recharge, disassemble or incinerate the battery.

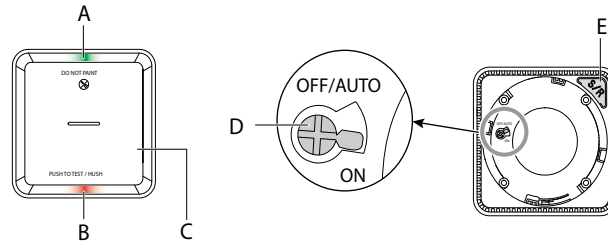
**Failure to follow these instructions can result in death, serious injury, or equipment damage.**

## About the device

The Wiser Smoke Alarm – Battery (**device**) uses a photoelectric sensor to detect smoke generated by fire. It also includes a temperature sensor that detects heat caused by rapid increase in temperature. When connected to the system the device sends the notifications via the Wiser app.

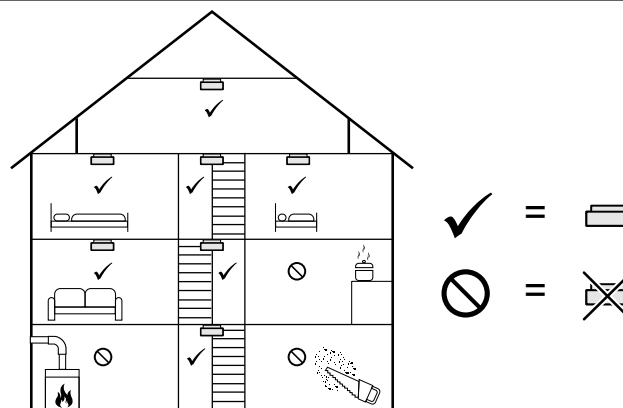
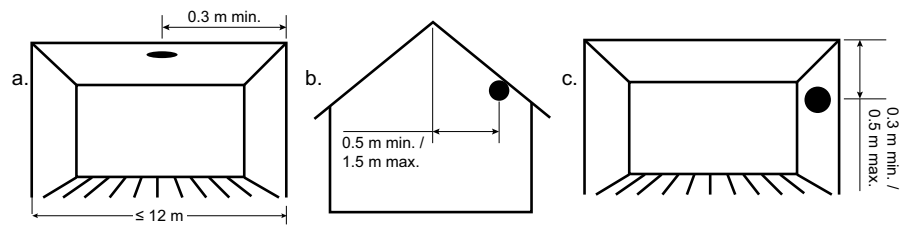
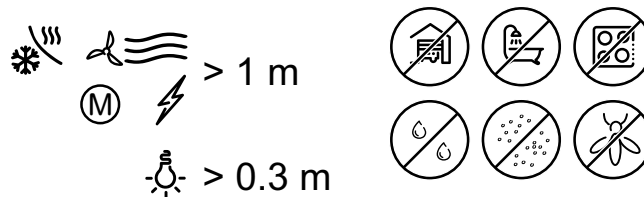
## Operating elements

- A. Status LED (Amber, Green and Red LED)
- B. Standby LED (Red LED)
- C. Test/Hush button
- D. Power switch
- E. Setup/Reset button



## Installation location

- Smoke Alarm can be installed on a flat/inclined ceiling, or on the wall.
- Do not install smoke alarms near windows, doors, or ducts.
- Avoid paint, stickers, or other decorations.



## Installing the device

Refer to the installation instruction supplied with this product.

## Pairing the device

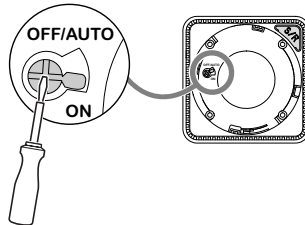
Using the Wiser Home app, pair your device with the **Wiser Hub**.




**IMPORTANT:** Do not mount the device before pairing. The Setup/Reset button and power switch are located on the rear side of the device.

**NOTE:** When multiple smoke alarms are paired with same Wiser Hub, an 868MHz radio frequency (RF) interconnection is automatically created between smoke alarms.

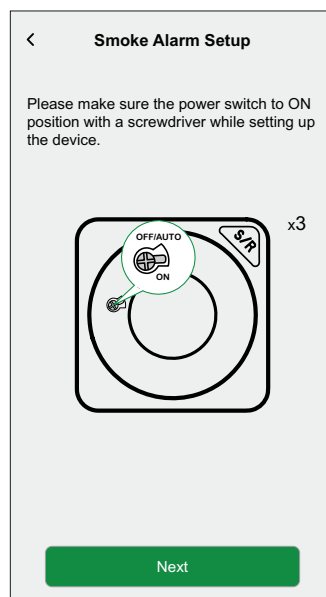
To pair the device:

1. Use a screwdriver to turn the power switch to ON position.

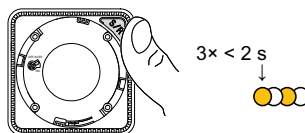


2. In the Wiser app Home page, tap .
3. Tap **Devices** >  > **Safety and Security** tab.
4. Tap  > **Next**.

The next screen shows the progress of the pairing.

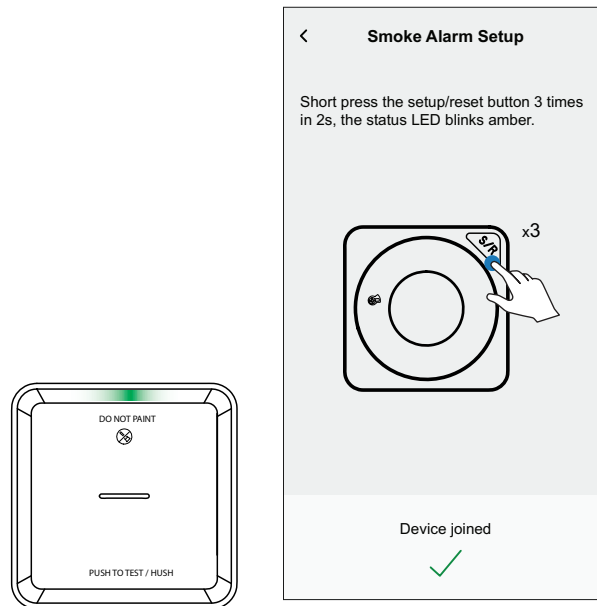


5. Short press the setup/reset button 3 times.



The LED blinks yellow.

- After a few seconds, a solid green LED indicates that the device has been successfully paired and the app shows that the device has joined.



- Tap **Next** to assign a name to the device.
- Tap **Next** to assign a device location and then tap **Submit**.  
**TIP:** The device is now listed under the **All** devices or room tab.



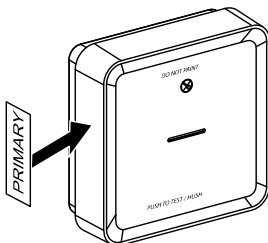
## Setting up connection without Wiser Hub

### Interconnecting devices without Wiser Hub

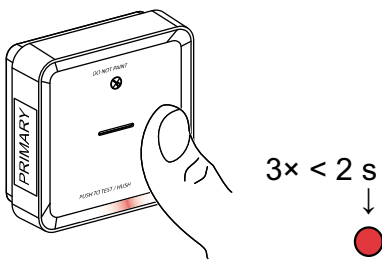
The smoke alarms (devices) can be connected directly to each other via RF connections even without a Wiser Hub network.

**IMPORTANT:** Turn the power switch to ON position on all the devices.

1. Identify a device and mark it as **Primary** with a label supplied. Other devices are considered as **Secondary**.



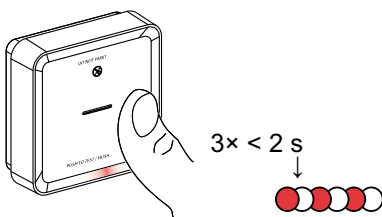
2. Short press the Test/Hush button 3 times within 2 s on the primary device.



The Standby LED turns on for 30 s once it is in pairing mode.

3. Identify a Secondary device and short press the Test/Hush button 3 times within 2 s.

The Standby LED blinks 3 times on both Primary and Secondary devices indicating a successful RF connection. Then on the Primary device, the Standby LED again turns on for 30 s



Repeat the step 3 on all Secondary devices.

**NOTE:** To exit from pairing mode, short press (< 0,5 s) the Test/Hush button 3 times on the Primary device. The Standby LED turns off indicating that the Primary device is not in pairing mode.

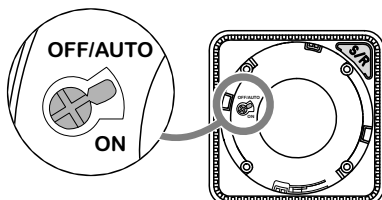
## Disconnecting a secondary device

Remove a Secondary device from the mounting base (See "Removing a device from the mounting base in the instruction manual").

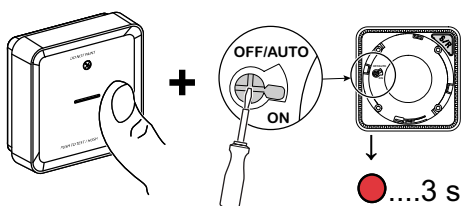
**NOTE:**

- Do not remove the Primary device.
- Read the following steps before disconnecting a Secondary device.

1. Make sure that the power switch is in OFF/AUTO position.

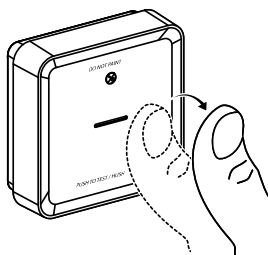


2. Press and hold the Test/Hush button and simultaneously turn the power switch to ON position.

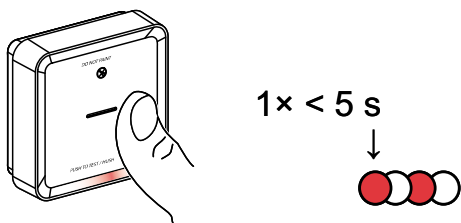


The Standby LED turns on for 3 s.

3. Continue to hold the Test/Hush button until the Standby LED turns off. Then release the Test/Hush button.



4. Short press the Test/Hush button when the Standby LED is on for 3 s.



The Standby LED blinks for 5 s indicating disconnecting of RF interconnection also the Status LED blinks green for 7 times.

**IMPORTANT:** When the Secondary device is successfully disconnected, make sure to turn the power switch to OFF/ AUTO position.

## Testing the device

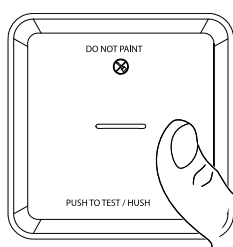
The device has a test mode that helps ensure the proper operation of the device. It is recommended to test the device once a month. If the device is installed in a mobile home, it is recommended to test the device weekly and before every journey.

## Testing the individual device

### IMPORTANT:

- Test the device once a month to ensure proper operation.
- If the smoke alarm is installed in a mobile home, test weekly and before every journey.

Press the Test/Hush button on each device for more than 3 s until an alarm goes off. If the alarm does not go off, either the battery is low or there may be other technical issues. Refer troubleshooting smoke alarm battery, page 31.

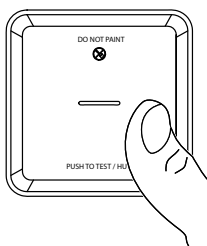


1 × > 3 s

## Testing the interconnected device(s)

It is possible to test all the devices simultaneously in an interconnected network with one operation.

1. Select any interconnected device.
2. Press and hold the Test/Hush button for more than 10 s until an alarm goes off on all interconnected devices.





1 × > 10 s

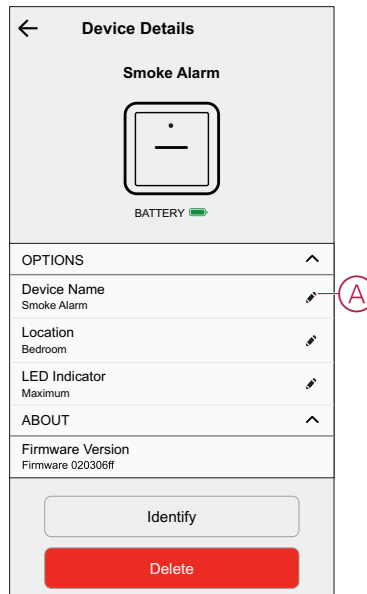
3. If there is no alarm triggered on the interconnected devices, check if the distance between each device is within the specification. Also check that the device is On and working properly. Refer troubleshooting smoke alarm battery, page 31.

# Configuring the device

## Renaming the device



Using the Wiser Home app, you can rename the device.  
To rename the device:

1. On the Home page, tap .
2. Tap **Devices** >  > **Device Name (A)**.

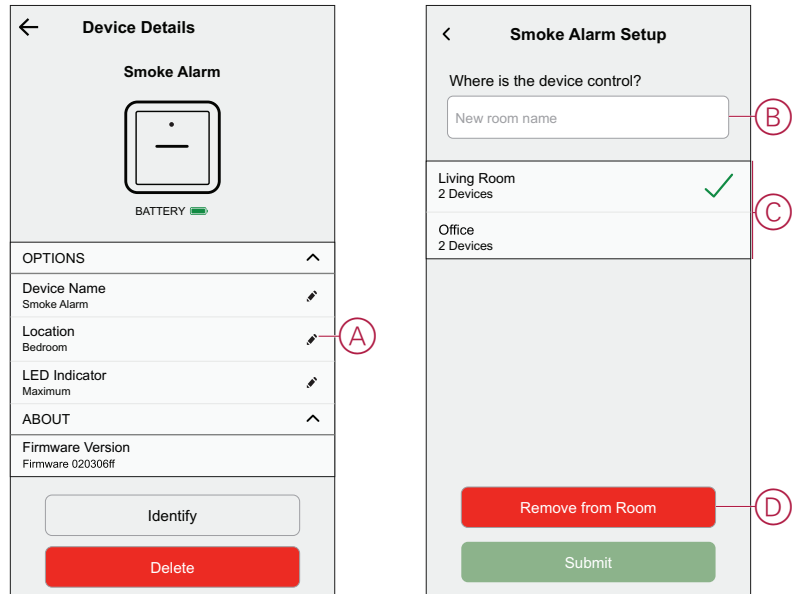


## Changing the device location

Using the Wiser Home app, you can change the device location.  
To change the device location:



1. On the Home page, tap .
2. Tap **Devices** >  > **Location** (A) for any of the following:
  - To create a new room, enter the room name (B) and tap **Submit**.
  - Change the device location (C).

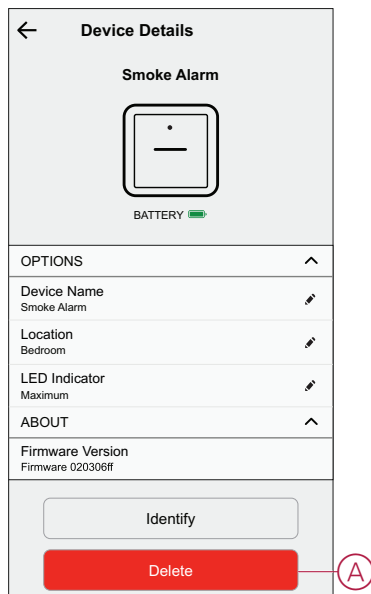
**NOTE:** To remove the device from the room, tap **Remove from Room** (D).



## Removing the device

Using the Wiser Home app, you can remove the device from the Wiser system. To remove the device:

1. On the Home page, tap .
2. Tap **Devices** >  > **Delete (A)**.



3. Tap **OK** to confirm.

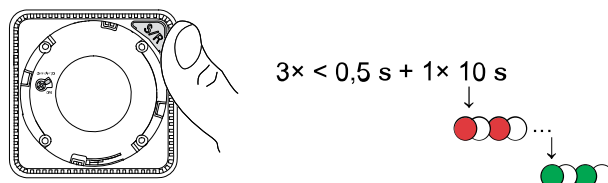
### NOTE:

- Removing the device will reset it; it will blink amber after resetting, indicating that it is now ready to pair.
- If there is a problem while pairing or resetting the device, refer to Resetting the device, page 14.

## Resetting the device manually

Short press (< 0,5 s) the Setup/Reset button 3 times and then long press the Setup/Reset button once for >10 s to reset the device to factory default mode.

**IMPORTANT:** All configuration data, user data and network data are deleted.



## Using the device

The Control Panel of the device allows you to view the current state of the device and allow you access the history and settings.

On the **Home** page, tap **All devices** > **Smoke Alarm** to access the control panel.

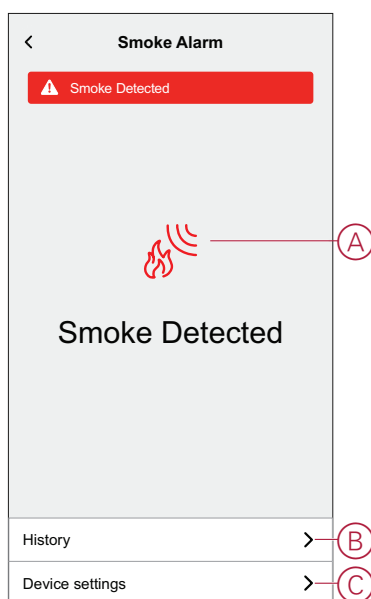
On the Smoke Alarm control panel page, you can see the following:

- Current state of the device (A)
- History (B)

**NOTE:** The history page gives information about the device (date, time, and type of alarm detected); for more information, refer chapter [Checking the device history](#), page 15.

- Device settings (C)

**NOTE:** The device setting page gives information about setting the LED brightness of the device; for more information, refer to the chapter [LED brightness settings](#), page 16.



## Checking the device history

Using the Wiser app, you can view the history of the device such as temperature alarm, smoke alarm, fault warning, remote alarm, Hush mode On/Off and low battery.

**NOTE:** All device history is stored in the cloud. When the cloud connection is lost, the device history cannot be viewed.

To view the device history:

1. On the **Home** page, tap **All devices** > **Smoke Alarm**.
2. On the device control panel page, tap **History**.

3. In the **History** page, you can see the date, time, and type of alarm detected.

**NOTE:** For a maximum period of 90 days, device history can be recorded.

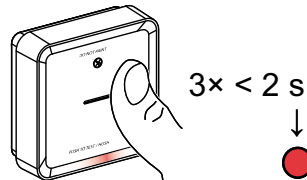
History	
TODAY	
09:42:42	Temperature Alarm
09:55:44	Smoke Alarm
YESTERDAY	
10:42:55	Remote Alarm
11:22:45	Hush Mode On
11:32:55	Hush Mode Off
01ST NOV 2021	
11:00:55	Fault Warning
12:22:55	Smoke Alarm
12:55:44	Tamper Alarm
02ND NOV 2021	
07:00:55	Temperature Alarm
08:22:55	Battery Defect
09:55:44	Smoke Alarm

## Setting LED brightness

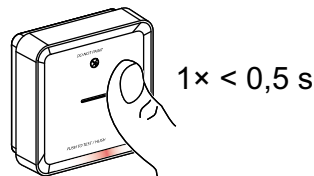
You can change the LED brightness level between minimum and maximum manually or by using Wiser app.

### Changing the LED brightness manually

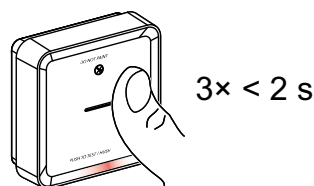
1. When the device is in standby mode, short press the test/hush button 3 times within 2 s.



2. When the Red LED is On, short press the Test/Hush button to switch between Min. and Max. LED brightness.





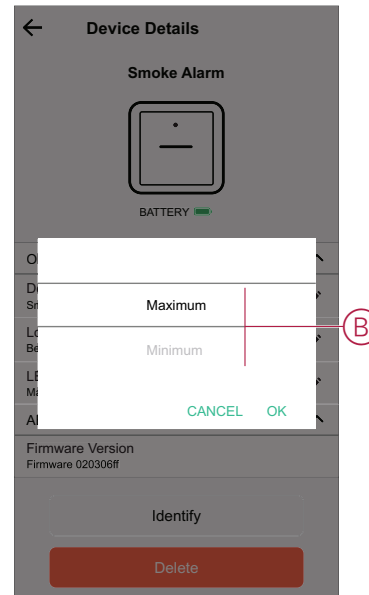
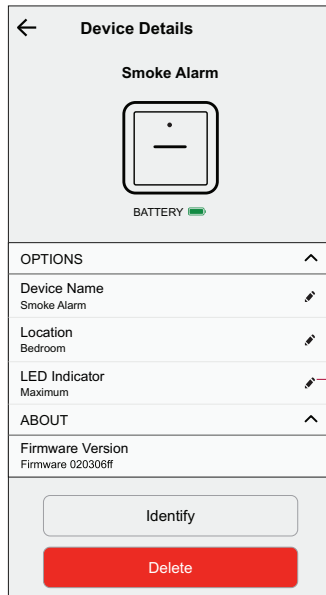
3. Again short press the Test/Hush button 3 times within 2 s to store the adjusted brightness level. Otherwise, you can wait 30s for the standby LED to turn off, then the brightness level will be saved.





## Changing the LED brightness using app

1. On the **Home** page, tap .
2. Tap **Devices** >  > **LED Indicator (A)** and
3. Short press **Setup/Reset (S/R)** button on the device to wake it before changing the brightness level
4. In the app, select one of the following (B):
  - **Maximum**
  - **Minimum**
5. Tap **OK**.



## Silencing the device

### Hush feature

During an alarm event, identify the device(s) which is/are blinking Red LEDs then short press the Test/Hush button on the device to stop the alarm.

**NOTE:** In hush mode, the device will not detect smoke/high temperature for 10 minutes. After this time the device resumes to normal operation. During this time, the Standby LED blinks once every 8 s.

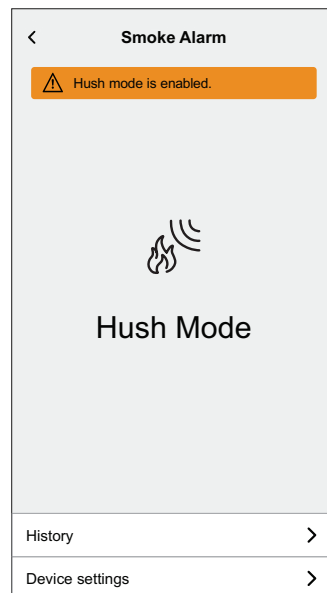
For instance, if smoke is detected and the device is set to hush mode, high-temperature detection will still be active.

In the event that smoke and high temperature are both detected at the same time, and the device is set to hush mode, then both smoke and high temperature detection will not work for the next 10 minutes.

In an interconnected group, if more than one device has blinking Red LEDs and an active alarm, short press the Test/Hush button on all devices. All interconnected devices stop alarming within 5 to 10 s.

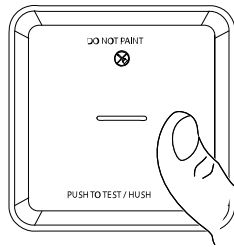
**NOTE:** Wait for 10 minutes before performing any test to avoid malfunctioning of the device.

Once the device is set to Hush Mode the status can be checked in Wiser app.



## Temporarily disabling smoke detection

To temporarily disable the smoke detection of a device, short press the Test/Hush button once when the device is in Standby mode. The device will not detect smoke for 10 minutes. During this mode the Standby LED blinks once every 8 s.



1 × < 3 s

**NOTE:** The temperature sensor remains active even when the smoke detection is disabled.

## Snoozing the device alerts

### Low Battery

When the battery is low, the Standby LED blinks every 48 s, together with a beep. You can snooze the low battery indication for 10 hours by short pressing the Test/Hush button once.

**IMPORTANT:** The user must replace the device within 30 days after the first alert.

**NOTE:** You can always check the current battery level in the control panel, page 15.

### Fault detection

When a device fault is detected, 2 beeps occur every 48 s together with blinking Standby LED. You can snooze the indication for 10 hours by short pressing the Test/Hush button once.

### Alarm memory

In an interconnected group, the Standby LED on the triggered device blinks once every 2 s for 72 hours after the alarm has stopped. This allows the user to identify the device that was triggered by smoke/high temperature. Short press the Test/Hush button once to snooze the blinking LED for 10 hours.

### False alarm


In an event of a false alarm in an interconnected group, it is recommended to identify the triggering device(s). These devices must be cleaned, serviced or replaced if necessary.

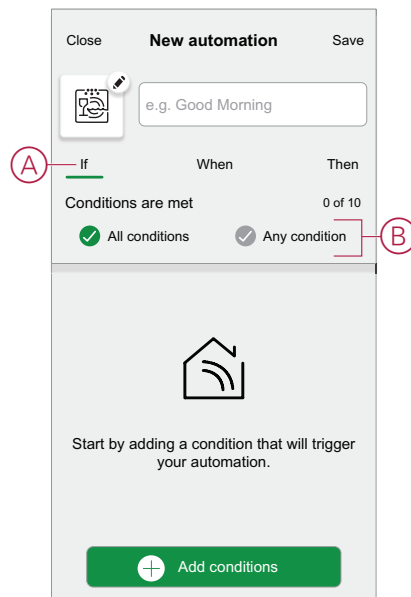
## Creating an automation

An automation allows you to group multiple actions together, triggered automatically or at scheduled times. By using the Wiser app, you can create automations based on your needs.

**NOTE:** To create and save automation, at least one condition and action must be added.

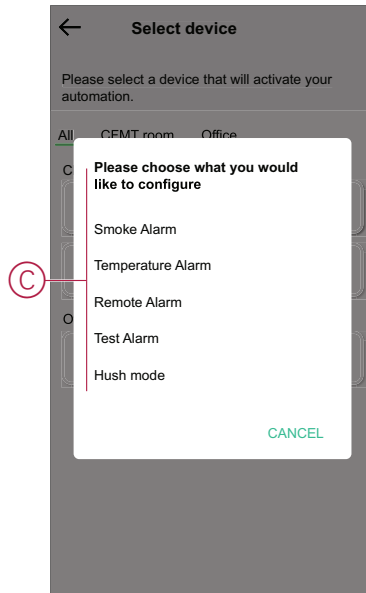
To create an automation:


1. On the **Home** page, tap .
2. Go to **Automation** > **+** to create an automation.
3. Tap **If** (A) and select any of the following conditions to meet (B):
  - **All conditions:** This triggers an action only when all conditions are met.
  - **Any condition:** This triggers an action when at least one condition is met.

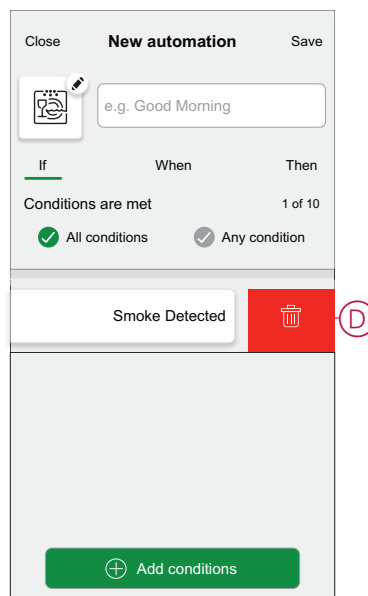


4. To add condition, tap **Add conditions** > **Device status change** > **Smoke Alarm** and select any of the following (C):
- **Smoke Alarm** - When the device detects smoke.
  - **Temperature Alarm** - When the device detects temperature rise.
  - **Remote Alarm** - When the device is triggered by an interconnected device.
  - **Test Alarm** - When the device is in test mode.
  - **Hush Mode** - When the device is in hush mode.

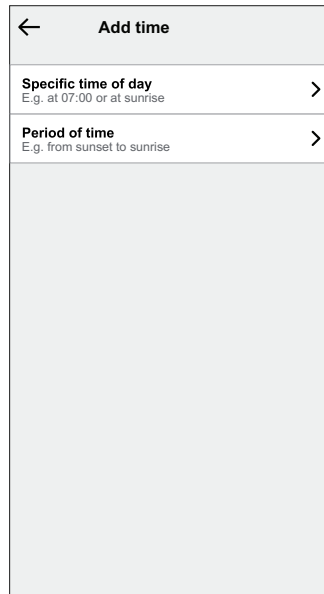
**NOTE:** Max. of 10 conditions can be added.




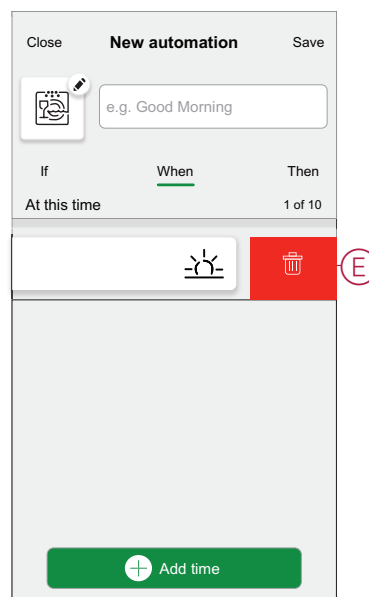
**NOTE:** To remove a condition, swipe the it left and tap  (D).



5. To set a specific time for your automation, tap **When** > **Add time** and select any of the following:
- **Specific time of the day: Sunrise, Sunset, Custom**
  - **Period of time: Daytime, Nighttime, custom**



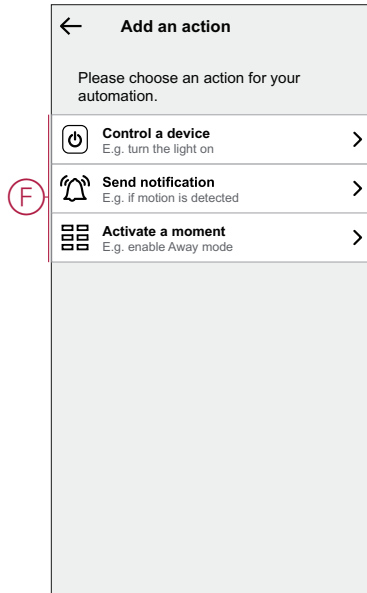
**NOTE:** To remove a specific time, swipe the it left and tap  (E).




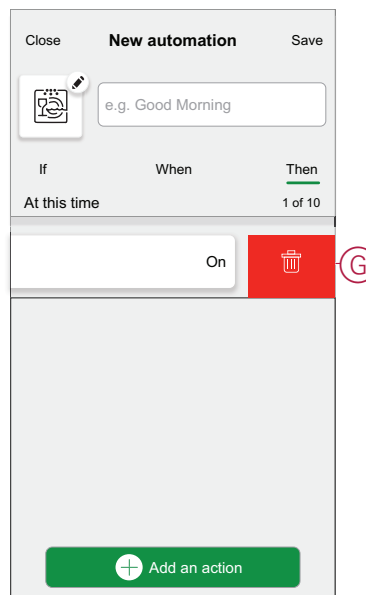
6. To add an action, tap **Then > Add an action** and select any of the following (F):

**NOTE:** Max.of 10 actions can be added.


- **Control a device:** Select a devices that you want to trigger.
- **Send notification:** Turn on the notification for the automation.
- **Activate a moment:** Select the moment that you want to trigger.

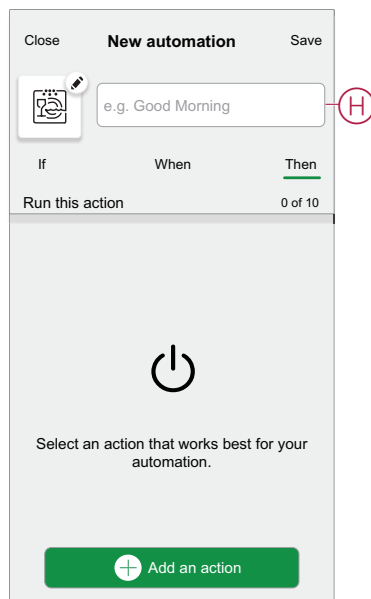



**NOTE:** To remove an action, swipe left on the action and tap  (G).

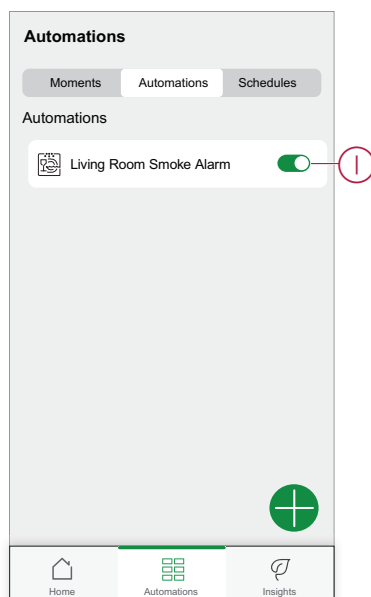


7. Enter the automation name (H) and tap **Save**.

You can choose the icon from the list that best represents your automation by tapping .



Once the automation is saved, it is visible on the **Automation** tab. Using the  (I) you can enable and disable the automation.

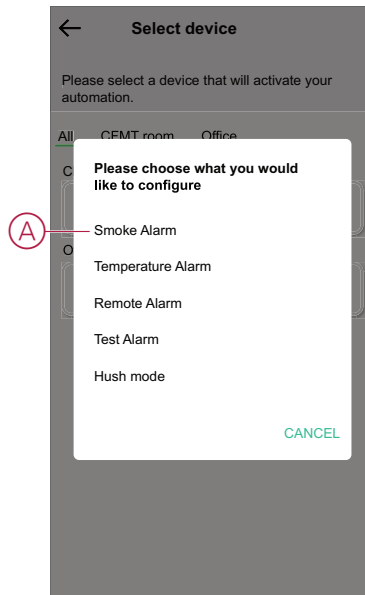





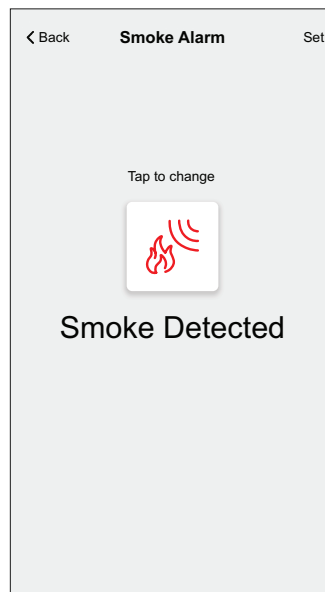
## Example of an automation

In the example below, you will get a notification in your app when smoke is detected.

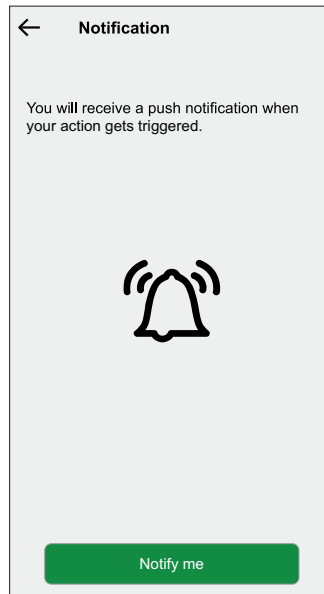
1. Go to **Automation** > **+** to create an automation.
2. To add a condition, tap **Add Condition** > **Device status change** > **Smoke Alarm**.
3. In Select function menu tap on **Smoke Alarm (A)**.



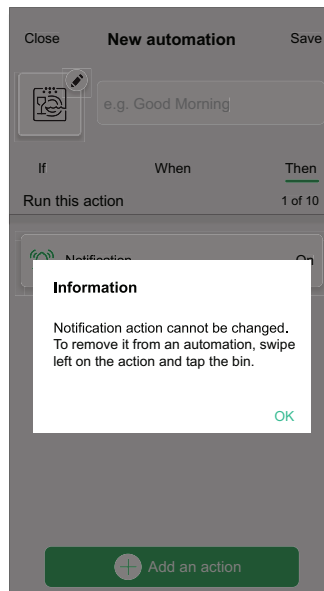
4. To change the status as Smoke Detected, tap  > **Set**.




5. To add an action, tap **Then > Add an action > Send notification > Notify me**.




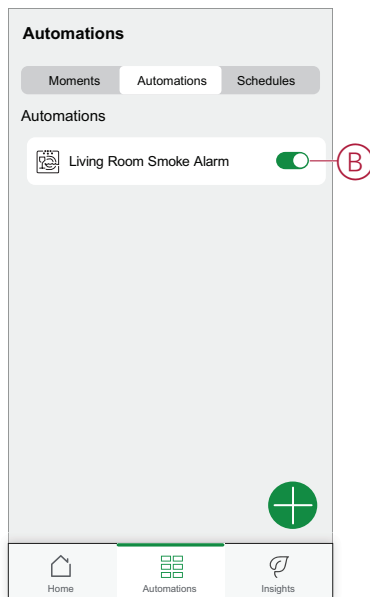
6. Read the information and tap **OK**.



7. Enter the name of the automation and tap **Save**.

**TIP:** You can choose the cover image that represents your automation by tapping .

You can enable or disable saved automations on the **Automation** tab by using  (B).

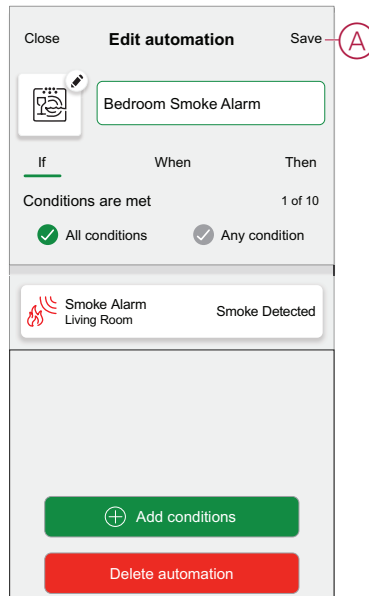


You will receive notification when the automation is triggered.

## Editing an automation

To edit an automation:

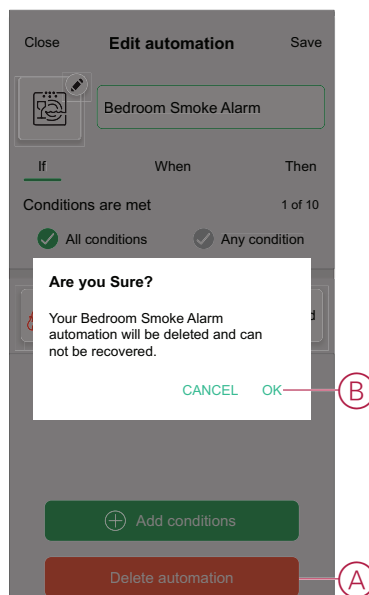
1. On the **Automation** tab, locate the automation you want to edit.
2. The **Edit automation** page:
  - Change the smoke alarm's settings
  - Add a new action or condition
  - Delete a new action or condition
  - Change the automation's name and icon
3. Tap **Save** (A).



## Deleting an automation

To delete an automation:

1. On the **Automation** tab, locate the automation that you want to delete.
2. On the **Edit automation** page, tap **Delete automation** (A).
3. Read the confirmation message and tap **OK** (B).



## Maintenance and cleaning

A monthly inspection is recommended to help ensure the device is dust, dirt, and insect free. The device can be vacuumed (strongly recommended) or brushed with a soft brush to remove accumulated dust, dirt or kitchen grease. Apply a small amount of insect surface spray to a cloth and wipe around device(s) every 3 to 6 months to mitigate insect ingress..



**IMPORTANT:**

1. Always test the device after cleaning, for more information refer testing the device, page 11.
2. If necessary refer to the installation instruction for more information about installing the device.



<b><i>NOTICE</i></b>
<p><b>EQUIPMENT MAINTENANCE INSTRUCTIONS</b></p> <ul style="list-style-type: none"><li>• Test the device regularly to ensure its functionality and the battery is in good condition.</li><li>• Replace the device after 10 years from the date of manufacturing.</li><li>• Do not open the device casing or repair yourself. There are no serviceable parts inside.</li></ul> <p><b>Failure to follow these instructions can result in equipment damage.</b></p>

## LED Indications

### Pairing

User Action	LED Indication	Status
Press the Setup/Reset button 3 times	LED blinks amber , once per second. 	Pairing mode is active for 30 seconds. When pairing is completed, LED glows green for some time before turning Off. 

### Resetting

User Action	LED Indication	Status
Press the Setup/Reset button 3 times and hold it for > 10 s.	After 10 s, the LED starts blinking red. 	The device is in reset mode. It is reset to the factory settings after 10 seconds. The device then restarts and the LED starts blinking green before turning Off. 

### Operating

Operating Mode		Standby LED	Alarming Sound	Duration
Normal mode / Standby mode		Blinks every 48 s	OFF	—
Alarm Mode	Local Alarm *	Blinks every 1 s	3 beeps every 4 s	—
	Interconnected alarm	OFF	3 beeps every 4 s	—
Test mode		1 blink every 1 s	3 beeps every 4 s	Until Test/Hush button is released
RF interconnection test		OFF	Continuous 3 beeps every 4 s	25 s
Hush mode		Blinks every 8 s	OFF	10 min
Low battery mode		Blinks every 48 s	1 beep every 48 s	End of life: replace smoke alarm
Fault mode		2 blinks every 48 s	2 beeps every 48 s	Until fault has been cleared
Snooze Mode	Low battery	Blinks every 24 s	OFF	10 hrs
	Fault	2 blinks every 24 s	OFF	10 hrs
	Alarm memory	Blinks every 48 s	OFF	10 hrs
<p><b>NOTE:</b> For all the operating modes, LED blinks Red.</p> <p>* For local smoke alarms, all red LEDs blink, whereas, for local temperature alarms, only the standby red LED blinks.</p>				

## Troubleshooting

Issue	Resolution/Action
Device does not sound when tested	<ol style="list-style-type: none"> <li>1. Confirm that the power switch is in ON position, or the device is installed correctly. If you are unsure then remove and reinstall the device.</li> <li>2. Press Test/Hush button until an alarm sound is produced. Do not press consecutively.</li> <li>3. If the problem persists or if you have questions about the warranty, contact customer care center.</li> </ol>
Device beeps and Standby LED blinks every 48 s	Battery may be low or drained. Replace the device.
Device beeps twice and Standby LED blinks every 48 s	<ol style="list-style-type: none"> <li>1. Clean the device. Refer to Maintenance section.</li> <li>2. If the problem persists or if you have questions about the warranty, contact customer care center.</li> </ol>
Device produces alarm sound unexpectedly without smoke or steam	<ol style="list-style-type: none"> <li>1. Identify the triggered device, indicated by a blinking Standby LED and 3 beeps every 4 s.</li> <li>2. Press Test/Hush button to pause the alarm sound. Interconnected device stops alarming in 5 to 10 s.</li> <li>3. Clean the device. Refer to Maintenance.</li> <li>4. Reinstall the device and test.</li> <li>5. If the problem persists or if you have questions about the warranty, contact customer care center.</li> </ol> <p><b>IMPORTANT:</b> After an alarm event, the device that has blinking Standby LED every 2 s is the triggered device. Identify the device and follow steps 3 to 5.</p>

## Technical Data

Operating Current	≤70 mA
Sensing Type	Photoelectric. This alarm contains NO radioactive material.
Ambient Humidity	5% to 95%
Operating Temperature	0 °C to 45 °C
Interconnecting	RF, max. 40 devices in one network
Communication protocol :	Zigbee, max. 40 devices in one network
Operating frequency	Zigbee: 2405 - 2480 MHz RF: 868 MHz
Mounting Type	Mounting on ceiling and wall only
Wireless Range	40m indoor line of sight
Horn Level	85 dB at 3 m
Dimensions (H × W × D)	89 × 89 × 33.5 mm
Standard	EN 14604:2005 + AC:2008
Certification	Zigbee 3.0

# Compliance

## Compliance information for Green Premium products

Find and download comprehensive information about Green Premium products, including RoHS compliance and REACH declarations as well as Product Environmental Profile (PEP) and End-of-Life instructions (EOLI).

### General information about Green Premium products

Click the link below to read about Schneider Electric's Green Premium product strategy.

<https://www.schneider-electric.com/en/work/support/green-premium/>

### Find compliance information for a Green Premium product

Click the link below to search for a product's compliance information (RoHS, REACH, PEP and EOLI).

**NOTE:** You will need the product reference number or product range to perform the search.

<https://www.reach.schneider-electric.com/CheckProduct.aspx?cskey=ot7n66yt63o1xblflyfj>

## Trademarks

This guide makes reference to system and brand names that are trademarks of their relevant owners.

- Zigbee® is a registered trademark of the Connectivity Standards Alliance.
- Apple® and App Store® are brand names or registered trademarks of Apple Inc.
- Google Play™ Store and Android™ are brand names or registered trademarks of Google Inc.
- Wi-Fi® is a registered trademark of Wi-Fi Alliance®.
- Wiser™ is a trademark and the property of Schneider Electric, its subsidiaries and affiliated companies.

Other brands and registered trademarks are the property of their respective owners.





Schneider Electric  
35 rue Joseph Monier  
92500 Rueil Malmaison  
France

+ 33 (0) 1 41 29 70 00

[www.se.com](http://www.se.com)

As standards, specifications, and design change from time to time,  
please ask for confirmation of the information given in this publication.

© 2021 – Schneider Electric. All rights reserved.

DUG\_Smoke alarm DC\_WH-00