

CCTFR6110 WV704R0A6902
CCTFR6111 WV704R0A6901

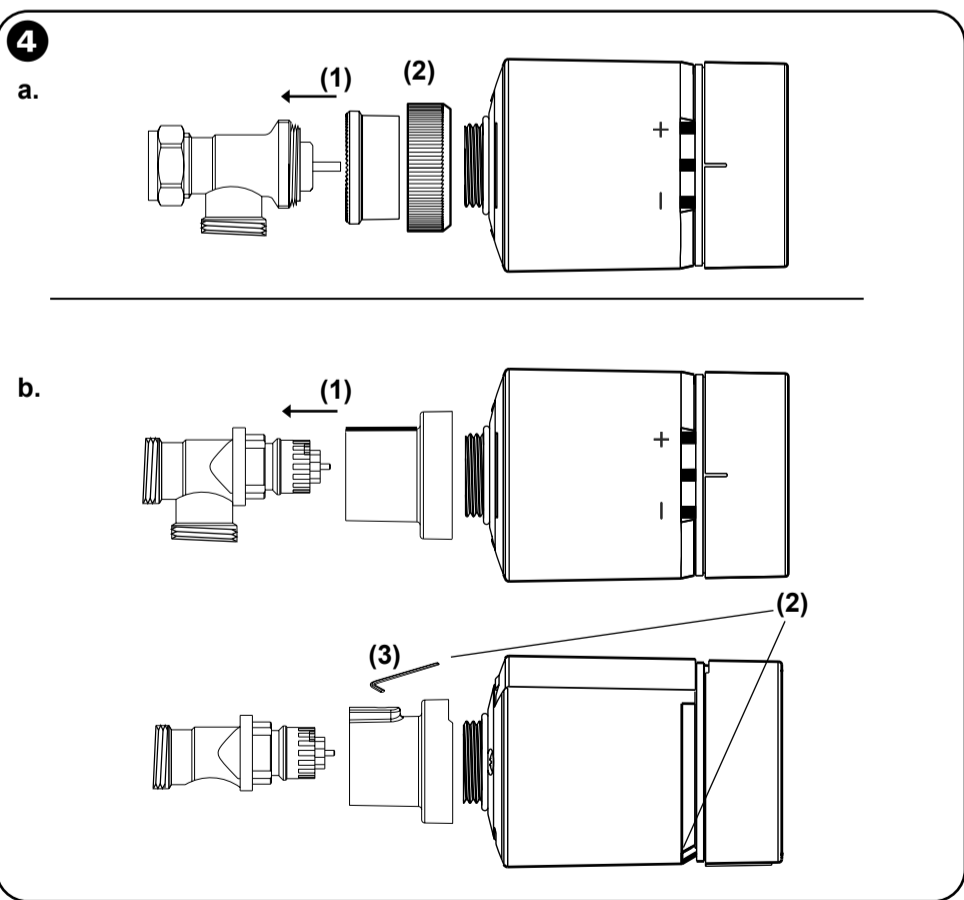
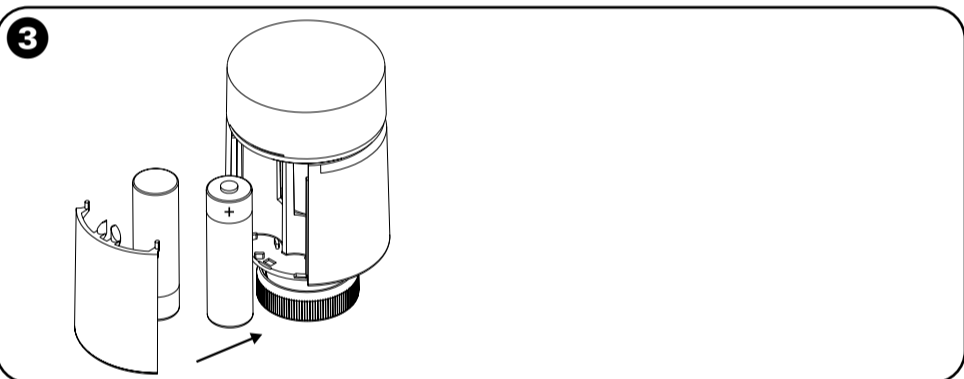
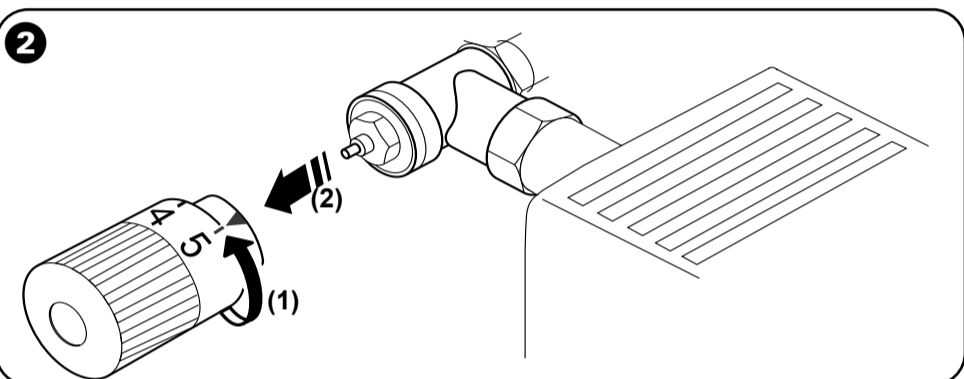
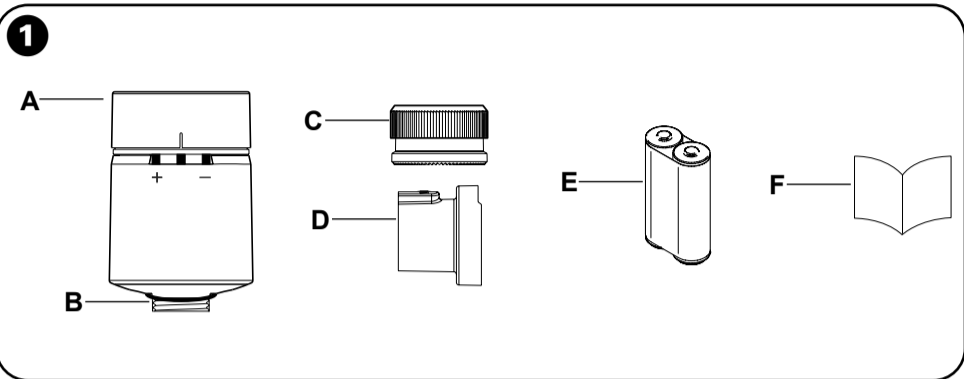


FR
Cet appareil, ses accessoires et batterie se recyclent

À DÉPOSER EN MAGASIN À DÉPOSER EN DÉCHÈTERIE

Points de collecte sur www.quefairedelesdechets.fr
Privilégiez la réparation ou le don de votre appareil !

Wiser



en Wiser Radiator Thermostat 2nd Generation

About this product

The Wiser Radiator Thermostat 2nd Generation (here in after referred to as thermostat) uses integrated temperature sensors to control the flow of water through a radiator, thereby regulating the temperature in a room. The target temperature and switching times are set in the Wiser Home App.

1 Check package contents

- A Wiser Radiator Thermostat 2nd Generation
- B O-ring (pre-installed)
- C M30 x 1.5 valve adapter and chrome ring nut
- D Danfoss RA adapter
- E 2 x AA Alkaline batteries
- F Installation guide

2 Removing the old radiator thermostat

Open the valve of the radiator thermostat to facilitate removal.

- (1) Loosen the ring nut engaged between the valve adapter and thermostat.
- (2) Remove the thermostat and adapter from the valve.

Note:

- To procure a valve body in the UK:
 - 15mm, angle, chrome finish, Commercial reference : 07 15 220
 - 15mm, straight, chrome finish, Commercial reference : 07 15 181
- Suitable for horizontal (shown) and vertical mounting.

3 Inserting the batteries

- When inserting batteries, observe the correct polarity.
- Dispose of the batteries according to statutory regulations.
- Used batteries must not be placed in normal household waste.
- Use alkaline or rechargeable batteries NiMH.
- When the batteries are inserted the device goes into install mode (LED's flashing and motor fully opened). A cap twist to + will toggle between battery types. If the middle LED flashes NiMH batteries are selected and no LED if Alkaline is selected.

CAUTION

HAZARD OF INJURY/EQUIPMENT DAMAGE

- Do not use Lithium and Zinc disposable batteries.
- Risk of explosion if battery is replaced by an incorrect type.
- Dispose of used batteries according to the instructions.

Failure to follow these instructions can result in injury or equipment damage.

4 Install the adapter and thermostat

NOTICE

HAZARD OF EQUIPMENT DAMAGE

- Do not use tools, such as pliers, for installation.
- Make sure that the O-ring is seated firmly on the thread. Tighten the ring nut by hand only.

Failure to follow these instructions can result in equipment damage.

Follow the installation steps for the type of adapter you have.

a. M30 x 1.5 mm adapter

- (1) Place the valve adapter on the valve body.
- (2) Gently screw the ring nut onto the valve adapter.
- (3) Fasten the screw on the thermostat manually.
- (4) Turn cap to '-' to exit install mode and calibrate.

To set the LEDs in the desired position: slightly loosen the ring nut, turn the thermostat to the desired position and tighten the ring nut again.

b. Danfoss RA adapter

- (1) Push the Danfoss adapter over the narrow end of the Danfoss valve.
- (2) Turn the Danfoss adapter until the grub screw hole is on the opposite side to where you want the thermostat LEDs to be positioned.
- (3) Tighten the grub screw with a 2 mm Allen key.
- (4) Screw on thermostat and tighten by hand.
- (5) Turn cap to '-' to exit install mode and calibrate.

5 Read full Device user guide online

Scan the QR code and choose your language for complete information about the device, including operation, configuration and using the product with a Wiser system.

6 Thermostat Radiator Valve (TRV) Standalone Mode

The Wiser Radiator Thermostat 2nd Generation operates in Standalone Mode when it is not connected to a Wiser Hub. The thermostat defaults to a setpoint of 20 °C and the setpoint can be adjusted by twisting the cap '-' or '+' to decrease or increase the setpoint to the desired value. In this mode the thermostat will work in the same way as traditional TRV.

LED state			Temperature setpoint °C
Red LED (Left)	Green/Red LED (Centre)	Blue LED (Right)	
Off	Off	Off	8
Off	Off	On	12
Off	Green	On	16
Off	Green	Off	20
On	Green	Off	24
On	Off	Off	28

Note:

(1) In this mode the Radiator thermostat is not interlocked to the boiler and an alternative method is required to operate the boiler.

(2) Operating in this mode should be temporary as battery life will be reduced.

Technical data

Power supply:	2 x 1.5 V IEC LR6 (AA) alkaline or rechargeable 1.2 V IEC HR6 NiMH batteries
Without power supply:	connection data retained
Temperature setting range:	5 °C to 30 °C
Temperature resolution:	0.5 °C
Surface temperature at place of installation:	max. 93 °C
Water temperature:	max. 110 °C, max. continuous 73° C
Ambient operating temperature:	0 °C to 45 °C
Closing force:	85 N nominal
Storage temperature:	- 20 °C to 65 °C
Operating frequency:	2.4 GHz
Max. radio frequency power transmitted:	max. 20 mW (13 dBm)
Degree of contamination:	2
Radio range:	30 m free field
Energy class:	IV - 2%
Software class:	A
Protection rating:	IP 30
Dimensions (HxØ):	79.5 x 52 mm
Communication protocol:	Zigbee 3.0 certified

Trademarks

- Wiser™ is a trademark and the property of Schneider Electric SE, its subsidiaries and affiliated companies.
- Zigbee® is a registered trademark of the Connectivity Standard Alliance.
- QR Code is a registered trademark of DENSO WAVE INCORPORATED in Japan and other countries.

Other brands and registered trademarks are properties of their relevant owners.

EU Declaration of Conformity

Hereby, Schneider Electric Industries SAS, declares that this product is in compliance with the essential requirements and other relevant provisions of RADIO EQUIPMENT DIRECTIVE 2014/53/EU and the Radio Equipment Regulations SI 2017 No. 1206

Declaration of conformity can be downloaded on:

<https://www.go2se.com/ref=CCTFR6110>

<https://www.go2se.com/ref=CCTFR6111>

Dispose of the device separately from household waste at an official collection point. Professional recycling protects people and the environment against potential negative effects. Wherever possible, batteries and rechargeable batteries must be removed from the device prior to disposal.

General Cybersecurity Information

Scan this code to access the Schneider Electric Cybersecurity Portal:

<https://www.se.com/ww/en/work/support/cybersecurity/security-notifications.jsp>



Schneider Electric Industries SAS

If you have technical questions, please contact the Customer Care Centre in your country.

se.com/contact

UK Representative
Schneider Electric Controls UK Ltd
401 Southway Drive
Plymouth, PL6 6QT
United Kingdom

For technical support in the UK and Ireland:
wiser.draytoncontrols.co.uk
+44 (0)333 6000 622

