

Wiser Room Thermostat

Device user guide

Information about features and functionality of the device.

05/2023



Legal Information

The Schneider Electric brand and any trademarks of Schneider Electric SE and its subsidiaries referred to in this guide are the property of Schneider Electric SE or its subsidiaries. All other brands may be trademarks of their respective owners.

This guide and its content are protected under applicable copyright laws and furnished for informational use only. No part of this guide may be reproduced or transmitted in any form or by any means (electronic, mechanical, photocopying, recording, or otherwise), for any purpose, without the prior written permission of Schneider Electric.

Schneider Electric does not grant any right or license for commercial use of the guide or its content, except for a non-exclusive and personal license to consult it on an "as is" basis. Schneider Electric products and equipment should be installed, operated, serviced, and maintained only by qualified personnel.

As standards, specifications, and designs change from time to time, information contained in this guide may be subject to change without notice.

To the extent permitted by applicable law, no responsibility or liability is assumed by Schneider Electric and its subsidiaries for any errors or omissions in the informational content of this material or consequences arising out of or resulting from the use of the information contained herein.

Table of Contents

Safety information	4
Wiser Room Thermostat.....	5
For your safety	5
About the device.....	6
Installing the device	7
Pairing the device	8
Configuring the device	9
Setting the device location	9
User interface lock settings	10
Identifying the device	11
Using the device.....	12
Setting the room temperature	12
Wake up the Device	13
Voice control.....	14
Creating a moment	15
Creating an automation	17
Removing the device	24
Resetting the device	24
Replacing the batteries	24
LED indications	25
Troubleshooting	25
Technical Data	26

Safety information

Important information

Read these instructions carefully and look at the equipment to become familiar with the device before trying to install, operate, service, or maintain it. The following special messages may appear throughout this manual or on the equipment to warn of potential hazards or to call attention to information that clarifies or simplifies a procedure.



The addition of either symbol to a “Danger” or “Warning” safety label indicates that an electrical hazard exists which will result in personal injury if the instructions are not followed.



This is the safety alert symbol. It is used to alert you to potential personal injury hazards. Obey all safety messages that accompany this symbol to avoid possible injury or death.

DANGER

DANGER indicates a hazardous situation which, if not avoided, **will result in** death or serious injury.

Failure to follow these instructions will result in death or serious injury.

WARNING

WARNING indicates a hazardous situation which, if not avoided, **could result in** death or serious injury.

CAUTION

CAUTION indicates a hazardous situation which, if not avoided, **could result in** minor or moderate injury.

NOTICE

NOTICE is used to address practices not related to physical injury.

Wiser Room Thermostat



For your safety

NOTICE

RISK OF DAMAGE TO DEVICE




Always operate the product in compliance with the specified technical data.

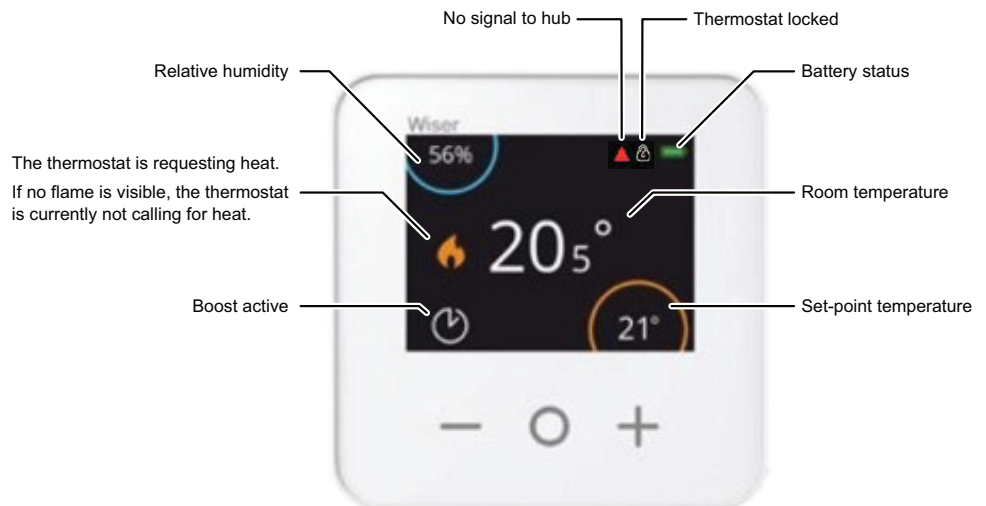
Failure to follow these instructions can result in equipment damage.

About the device

The Wiser Room Thermostat (hereinafter referred to as **Room Thermostat**) is a wireless, battery-powered, colorful touch-button display where the end-user can increase, decrease, boost, and set the room temperature.

The Room Thermostat display shows information such as (room temperature, relative humidity, battery level, boost status, heating symbol, and signal status).

NOTE: On the Room Thermostat screen,  icon changes and appears  when the room is in Comfort Mode and  when the room is in ECO Mode. For more information, refer to the System User Guide.



Advantage of using the Room Thermostat:

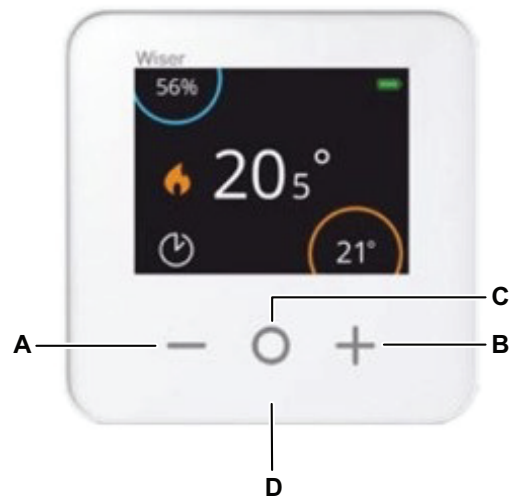
- Easy to control all heating appliances in the room from one place.
- Control locally or remotely using the wiser app

Features of the Room Thermostat:

- Works with Amazon Alexa & the Google Assistant
- Boost, and set the room temperature
- Configure several time schedules for heating
- To check humidity of the room
- Device user interface lock

Diagram of operating elements

- Reduce temperature
- Increase temperature
- Boost
- LED





Installing the device

Refer to the installation instruction supplied with this product.

Pairing the device

Using the Wiser Home app, pair your Room Thermostat with the **Wiser Hub** to access and control the Room Thermostat.

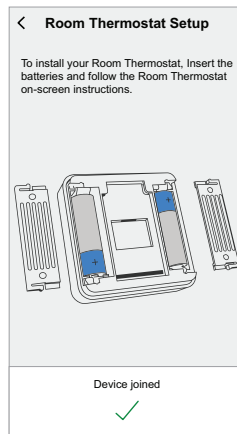
To pair the Room Thermostat:

1. On the Home page, tap .
2. Tap **Devices** >  icon and tap **Climate** (tab) > **Room Thermostat**.

TIP: The next screen shows the joining process of the Room Thermostat.

3. Wait for a few seconds.

In the app, you can see the Room Thermostat is successfully joined.




4. Tap **Next** to enter Room Thermostat name and assign it to an existing room or a new room.

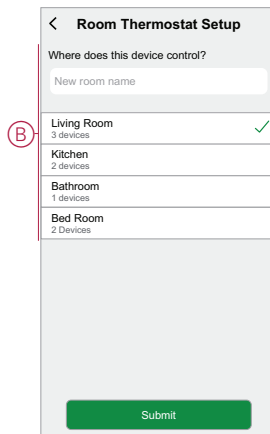
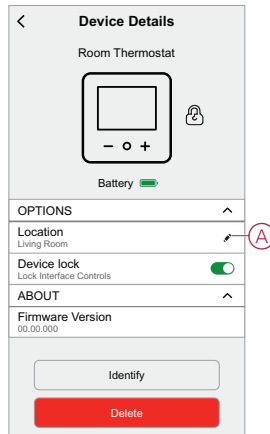
You can see the added Room Thermostat on the Home page under the room tab or under **ALL** devices.

Configuring the device

Setting the device location

Using the Wiser Home app, you can assign the Room Thermostat location in the room (such as bedroom, living room, dining room etc.).
To assign the Room Thermostat location:

1. On the Home page, tap .
2. Tap **Devices > Room Thermostat > Location** (A) to assign the Room Thermostat to the existing room or a new room (B) and tap **Submit**.




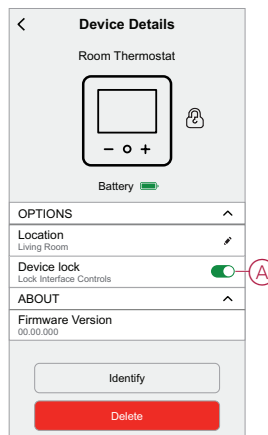
User interface lock settings

Using the Wiser Home app, you can lock the Room Thermostat controls. This prevents children from changing the temperatures in your room when playing with the Room Thermostat.

To lock or unlock the Room Thermostat control:

1. On the Home page, tap .
2. Tap **Devices > Room Thermostat > Device lock (A)**.


TIP: When the Room Thermostat lock is active,  will appear next to the Room Thermostat.



Identifying the device

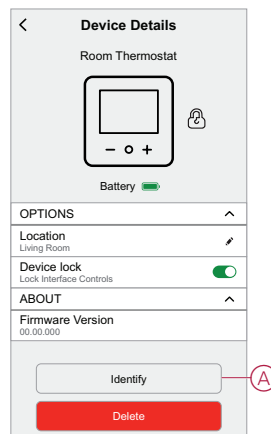
Using the Wiser Home app, you can identify a Room Thermostat from the other available devices in the room.

To identify the Room Thermostat:

1. On the Home page, tap .
2. Tap **Devices > Room Thermostat > Identify (A)**.

NOTE:

- This feature displays an exclamation mark on the Room Thermostat screen, so you can identify the actual device. It may take up to a minute to display an exclamation mark on the Room Thermostat screen.
- The Room Thermostat displays an exclamation mark until you tap **OK**.



Using the device

Setting the room temperature

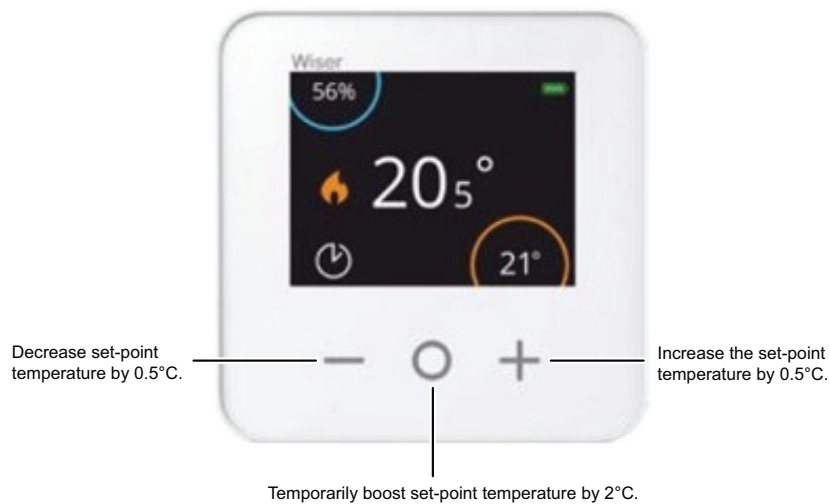
You can set the room temperature manually using the room thermostat button or remotely using the Wiser Home app.

Setting room temperature manually

You can increase or decrease or boost the room temperature using the Room Thermostat button.

The room temperature can be increased or decreased, and boost time can be set using a Room Thermostat button.

- Press the + button to increase the set-point temperature by 0.5 °C.
- Press the - button to decrease the set-point temperature by 0.5 °C.



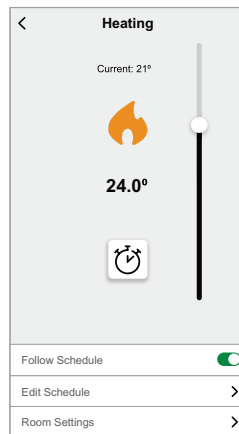
The amount of time the boost remains active depends on how many times you press O as follows:

- Press 1 time = 30 minutes
- Press 2 time = 1 hour
- Press 3 time = 2 hours
- Press 4 time = 3 hours
- Press 5 times = Cancel

NOTE: With only boost features, you can set the time like how long you want the room to be heated up.

Setting the room temperature using the app

Using the Wiser Home app, you can adjust the room temperature. On the control panel page, drag the sliding bar up/down to adjust the room temperature.



Wake up the Device

If there has been no interaction for 15 seconds, the Room Thermostat goes into Sleep Mode, and the display fades out. Wake up the Room Thermostat by tapping any button.

Voice control

You can control the plug using Amazon Alexa® and Goggle home by giving a voice command.

Amazon Alexa®

Amazon Alexa® (Alexa) is an intelligent personal assistant developed by Amazon®, and is capable of voice interaction.

Common Wiser commands for Alexa

- Discover Devices: “Alexa, discover devices”
- Reduce Temperature: “Alexa, decrease the temperature upstairs by 4 degrees”
- Increase Temperature: “Alexa, increase the temperature upstairs by 3 degrees”
- Set Temperature: “Alexa, set the upstairs to 20 degrees”
- Get Temperature: “Alexa, what is the upstairs temperature?”
- Get the Set Point: “Alexa, what is the upstairs set to?”

Google Home

Google Home is a brand of smart speakers that work similarly to Amazon’s Alexa. The user can speak a profusion of commands to request information, or ask Google Assistant to perform action.”

Common Wiser commands for Google Home:



- Inquiry: “OK, Google, is the hot water on?”
- Hot Water Command: “OK, Google, turn on/off the hot water”
- Room Temperature: “OK, Google, how warm is (room name)?”
- Set Temperature: “OK, Google, set (room name) to XX degrees”
- Increase Temperature: “OK, Google, increase the setpoint by XX degrees”
- Set Temperature: “OK, Google, set (room name) to XX degree”


Changes made with Google Home

All changes made through a voice command related to room thermostat that is valid for one hour, or until the next scheduled event. The user cannot change this action. This also applies for boosts initiated from the room thermostat.

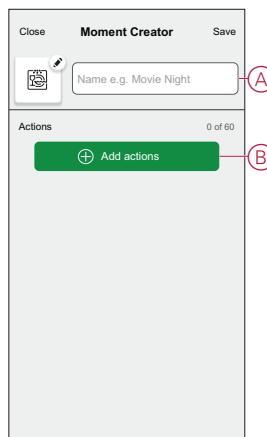
Creating a moment

Moment allows you to group multiple actions that are usually performed together. By using the Wiser Home app, you can create moments based on your needs. To create a moment:

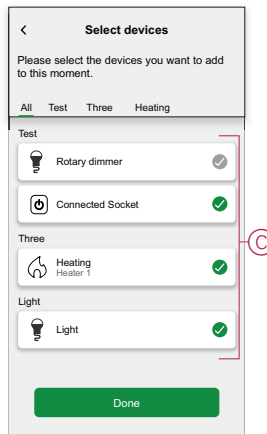
1. On the **Home** page, tap .
2. Go to **Moments** >  to create a moment.
3. Enter the name of the moment (A).

TIP: You can choose the cover image that best represents your moment by tapping .

4. Tap **Add actions** (B) to select the list of devices.

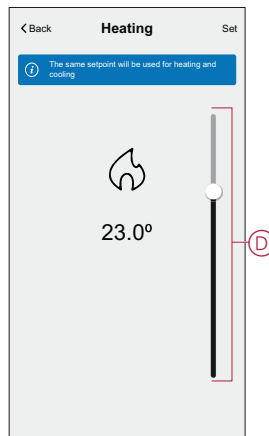


5. In the **Add actions** menu, you can select the devices (C).



6. Once all the device are selected, tap **Done**.

7. On the **Moment creator** page, tap the device to set the condition. For example, select heating.
 - Set the required temperature using sliding bar (D).





When the desired condition is set, tap **Set**.

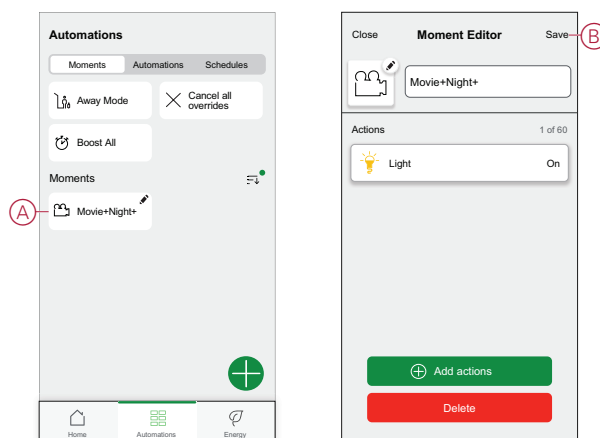
8. Once all conditions are set, tap **Save**.

Once the moment is saved, it is visible on the **Moments** tab. You can tap on the moment to enable it.

Editing a moment



To edit a moment:

1. On the **Home** page, tap .
2. Go to **Moments**, locate the moment you want to edit and tap  (A).
3. On the **Moment Editor** page, you can tap each item to change the settings and tap **Save** (B).

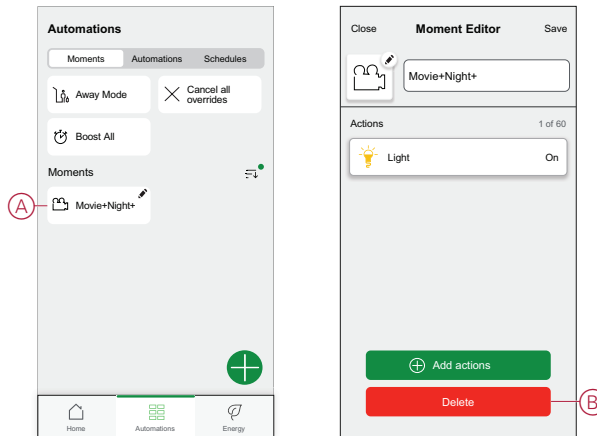


Deleting a moment

To delete a moment:

1. On the **Home** page, tap .
2. Go to **Moments**, locate the moment you want to delete and tap  (A).



3. On the Moment Editor page, tap **Delete** (B) and tap **Ok**.

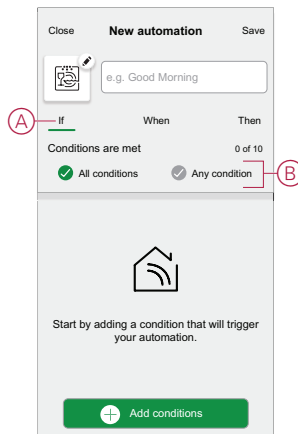


Creating an automation

An automation allows you to group multiple actions that are usually done together, triggered automatically or at scheduled times. By using the Wiser app, you can create automations based on your needs.

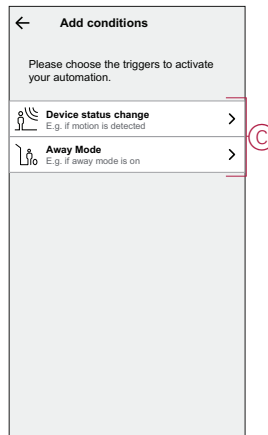
To create an automation:

1. On the **Home** page, tap .
2. Go to **Automation** >  to create an automation.
NOTE: Max. 10 automations can be added.
3. Tap **If** (A) and select any of the following conditions (B):
 - **All conditions:** This triggers an action only when all conditions are met.
 - **Any condition:** This triggers an action when at least one condition is met.

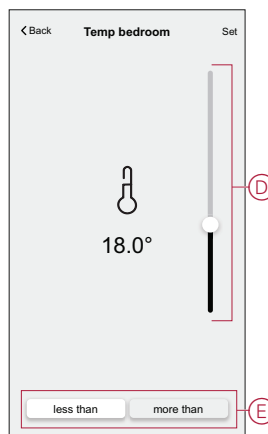


4. Tap **Add conditions** and select any of the following (C):
- **Device status change**: Select a device to enable automation.
 - **Away Mode**: Enable/Disable away mode to trigger an action.


TIP: Away mode can also be used as a trigger to turn off the lights, dimmer or closing the shutter etc. For more information refer to *Away mode*.



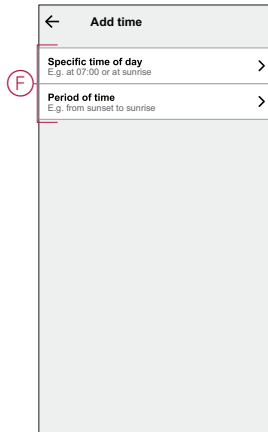
5. Tap **Device status change** > **Temperature/Humidity Sensor** > **Temperature**. Set the temperature using sliding bar (D) and select the condition (E) (less than / more than), then tap **Set**.




NOTE:

- Max. 10 conditions can be added.
- To remove an added condition, swipe left and tap .

6. To set a specific time for your automation, tap **When > Add time** and select any of the following (F):
- **Specific time of the day: Sunrise, Sunset, Custom.**
 - **Period of time: Daytime, Night time, Custom.**

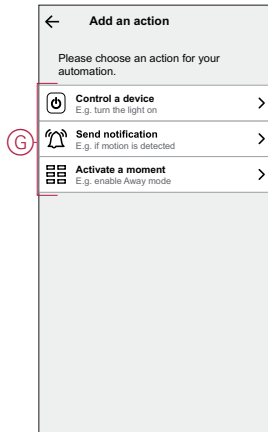


NOTE:

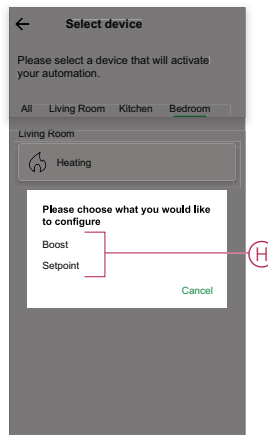
- Max. 10 entries can be added
- To remove a specific time, swipe left and tap .

7. To add an action, tap **Then > Add an action** and select any of the following (G):

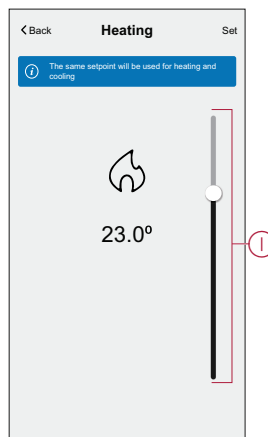
- **Control a device:** Select a devices that you want to trigger.
- **Send notification:** Turn on the notification for the automation.
- **Activate a moment:** Select the moment that you want to trigger.




8. Tap **Control a device** > **Heating** and select any of the following (H):
- **Boost**: Set the duration to increase the temperature by 2° C.
 - **Setpoint**: Set the desired temperature.



9. Tap **Setpoint**, set the required temperature using vertical sliding bar (I), then tap **Set**.

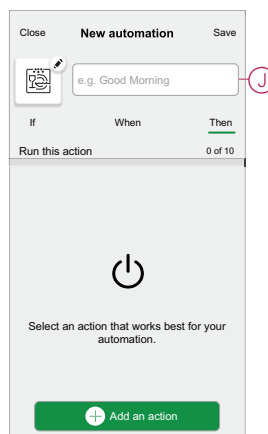



NOTE:

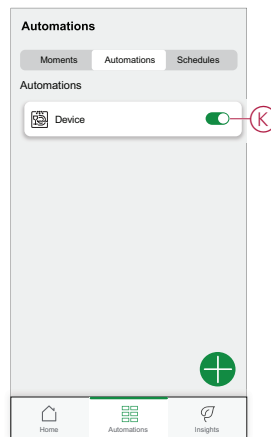
- Max. 10 actions can be added.
- To remove an action, swipe it left on the action and then tap .

10. Enter the automation name (J).

You can choose the cover image that represents your automation by tapping




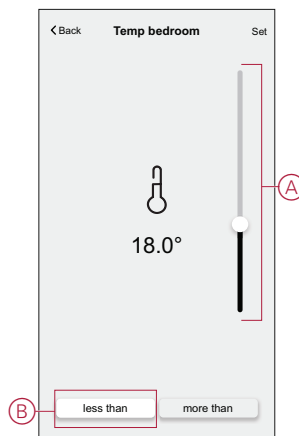
11. Tap **Save**.
Once the automation is saved, it is visible on the **Automation** tab.
Using the  (K) you can enable and disable the automation.



Example of an automation

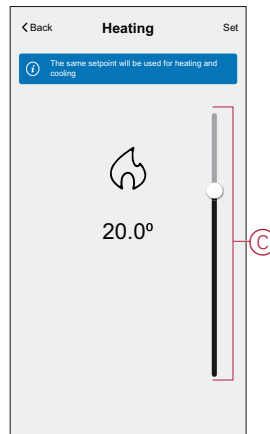
This demonstration shows you how to create an automation to turn on the Heating to 20 °C when the temperature is less than 18 °C.

1. Go to **Automation** >  to create an automation.
2. To add a condition, tap **Add Condition** > **Device status change** > **Temperature/Humidity Sensor** > **Temperature**.
3. Set the temperature as 18 °C (A) and the condition as **less than** (B) and tap **Set**.




4. Read the information and tap **OK**.

5. To add an action, tap **Then** > **Add an action** > **Control a device** > **Heating** > **Setpoint**. Set the temperature to 20 °C (C), then tap **Set**.



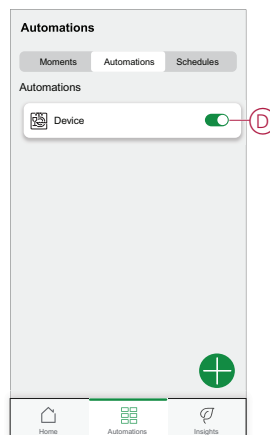
6. Read the information and tap **OK**.

7. Enter the name of the automation.

TIP: You can choose the cover image that represents your automation by tapping .

8. Tap Save.


Once the automation is saved, it is visible on the Automation tab.



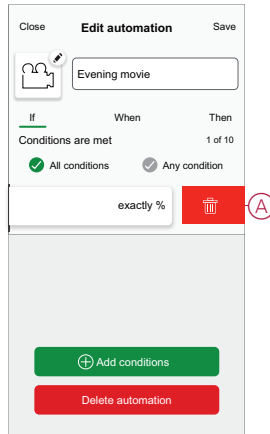
NOTE: You can enable or disable saved automations on the **Automations** tab by using  (D).

Editing an automation

To edit an automation:

1. On the **Home** page, tap .
2. Go to **Automation**, tap the automation you want to edit.
3. On the **Edit automation** page, you can:
 - Change the icon.
 - Rename the automation.
 - Change/Delete the condition or action.


4. Remove the Condition or Action by swiping it to the left and tapping the **bin** (A).

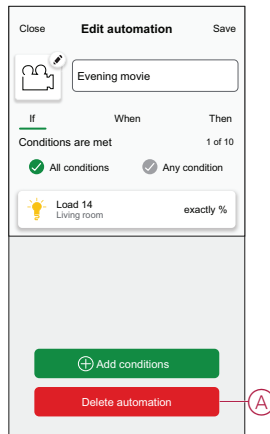


5. Add a new condition or action and then tap **Save**.

Deleting an automation

To delete an automation:

1. On the **Home** page, tap .
2. Go to **Automation**, tap the automation you want to delete .
3. On the Edit automation page, tap **Delete Automation** (A) and tap **Ok**.

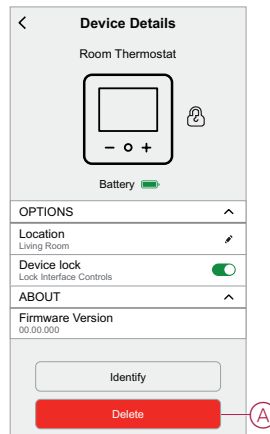


Removing the device

Using the Wiser home app, you can remove the Room Thermostat from the Wiser system.

To delete the Room Thermostat:

1. On the Home page, tap .
2. Tap **Devices > Room Thermostat > Delete (A)**.



Resetting the device

The Room Thermostat can be reset manually at any time, e.g., if the Hub is replaced. To remove the device from a heating system and join another system. To reset the Room Thermostat:

1. Remove the batteries and re-insert them.
2. When the “Wiser” startup screen appears, press the + and - buttons at the same time for 20 seconds until the unit restarts.



Replacing the batteries

Replace the batteries when the battery level is low, the battery level can be seen in the Room Thermostat display top-right corner. It can also be viewed in the Wiser Heat app under Settings > Devices.

Follow the steps below to replace the batteries:

1. Open the battery compartments.

2. Replace the batteries.

TIP: Make sure that the polarity of the batteries (+ and -) are in the right direction. The polarity is indicated on the terminals of the device.

NOTE: Do not use rechargeable batteries, use only standard AA batteries that are non-rechargeable.

3. Close the battery compartments.



LED indications

Room thermostat

Status	LED	Description
Low Battery		Flashes red when the batteries are low.

Troubleshooting

Symptom	Possible cause	Solution
The Room Thermostat screen goes blank.	Batteries may be low or drained	Replace the batteries., page 24
Unable to set the room temperature	Wiser Hub signal is weak or not connected to the WIFI network.	Check for a WIFI signal.

Technical Data

Power supply	2 alkaline batteries type IEC LR6 1.5 V (AA)
Interfaces	User: TFT screen, touch buttons
Wiring	No cabling required
Temperature setting range	5 °C to 30 °C
Temperature resolution	0.5 °C
Operating temperature	0 °C to 45 °C
Storage temperature	-20 °C to 65 °C
Operating frequencies	2.4 GHz (bidirectional, mesh)
Transmission	+13 dBm (20 mW)
Degree of pollution	2
Radio signal range	30 m in free space
Software class	A
IP rating	IP20
Mounting	Wall bracket or table stand
Product dimensions:(H x W x D)	76 x 76 x 25 mm

Compliance

Compliance information for Green Premium products

Find and download comprehensive information about Green Premium products, including RoHS compliance and REACH declarations as well as Product Environmental Profile (PEP) and End-of-Life instructions (EOLI).

<https://checkaproduct.se.com/>



General information about Green Premium products

Click the link below to read about Schneider Electric's Green Premium product strategy.

<https://www.schneider-electric.com/en/work/support/green-premium/>



Trademarks

This guide makes reference to system and brand names that are trademarks of their relevant owners.

- Zigbee® is a registered trademark of the Connectivity Standards Alliance.
- Apple® and App Store® are brand names or registered trademarks of Apple Inc.
- Google Play™ Store and Android™ are brand names or registered trademarks of Google Inc.
- Wi-Fi® is a registered trademark of Wi-Fi Alliance®.
- Wiser™ is a trademark and the property of Schneider Electric, its subsidiaries and affiliated companies.

Other brands and registered trademarks are the property of their respective owners.

Schneider Electric
35 rue Joseph Monier
92500 Rueil Malmaison
France

+ 33 (0) 1 41 29 70 00

www.se.com

As standards, specifications, and design change from time to time,
please ask for confirmation of the information given in this publication.

© 2021 – 2023 Schneider Electric. All rights reserved.

DUG_Room Thermostat_WH-02