

Wiser Plug

Device user guide

Information about features and functionality of the device.

05/2023



Legal Information

The Schneider Electric brand and any trademarks of Schneider Electric SE and its subsidiaries referred to in this guide are the property of Schneider Electric SE or its subsidiaries. All other brands may be trademarks of their respective owners.

This guide and its content are protected under applicable copyright laws and furnished for informational use only. No part of this guide may be reproduced or transmitted in any form or by any means (electronic, mechanical, photocopying, recording, or otherwise), for any purpose, without the prior written permission of Schneider Electric.

Schneider Electric does not grant any right or license for commercial use of the guide or its content, except for a non-exclusive and personal license to consult it on an "as is" basis. Schneider Electric products and equipment should be installed, operated, serviced, and maintained only by qualified personnel.

As standards, specifications, and designs change from time to time, information contained in this guide may be subject to change without notice.

To the extent permitted by applicable law, no responsibility or liability is assumed by Schneider Electric and its subsidiaries for any errors or omissions in the informational content of this material or consequences arising out of or resulting from the use of the information contained herein.

Table of Contents

Safety information	4
Wiser Plug	5
For your safety	5
About the device	6
Installing the device	6
Pairing the device	7
Configuring the device	8
Renaming the device	8
Changing the icon	8
Setting the device location	9
Identifying the device	10
Using the device	11
Switching Operation	11
Creating a Schedule	11
Voice control	13
Creating a moment	13
Creating an automation	15
Removing the device	20
Resetting the device	21
LED indications	21
Technical Data	22

Safety information

Important information

Read these instructions carefully and look at the equipment to become familiar with the device before trying to install, operate, service, or maintain it. The following special messages may appear throughout this manual or on the equipment to warn of potential hazards or to call attention to information that clarifies or simplifies a procedure.



The addition of either symbol to a “Danger” or “Warning” safety label indicates that an electrical hazard exists which will result in personal injury if the instructions are not followed.



This is the safety alert symbol. It is used to alert you to potential personal injury hazards. Obey all safety messages that accompany this symbol to avoid possible injury or death.

DANGER

DANGER indicates a hazardous situation which, if not avoided, **will result in** death or serious injury.

Failure to follow these instructions will result in death or serious injury.

WARNING

WARNING indicates a hazardous situation which, if not avoided, **could result in** death or serious injury.

CAUTION

CAUTION indicates a hazardous situation which, if not avoided, **could result in** minor or moderate injury.

NOTICE

NOTICE is used to address practices not related to physical injury.

Wiser Plug



CCTFR6501



CCTFR6500

For your safety

NOTICE

RISK OF DAMAGE TO DEVICE

Always operate the product in compliance with the specified technical data.

Failure to follow these instructions can result in equipment damage.

⚠ CAUTION

RISK OF DAMAGE TO DEVICE

- The plug must be used indoors only.
- To disconnect the plug from the power supply, pull it out of the socket outlet or turn Off the fuse in the incoming circuit.
- Do not connect plugs one after another.
- Do not install in places with high humidity or extreme temperatures.
- Do not expose the smart plug to flammable liquids, gases or other explosives.

Failure to follow these instructions can result in injury or equipment damage.

About the device

The Wiser Smart Plug (hereinafter referred to as **Plug**) is a push button switch that allows you to turn your electrical appliances ON and OFF from the Wiser Home App. It provides power to the electrical appliance connected to it. The Plug will work in any wall socket when it is Plugged into. The wall socket needs to be switched on for it to function.

The Plug acts as a Radio Frequency (RF) signal range extender to control your electrical appliances remotely. It has a built-in RF signal range extender to enable connectivity to devices further away from the Wiser Hub.

Advantage of using the Plug:

- Configure several time schedules to switch on/off the Plug.
- Set notification to alarm when power consumption (high or low).

Features of the Plug:

- Mobile or manual control anytime, anywhere with the Wiser app
- Works with Amazon Alexa, the Google Assistant and Siri

Diagram of operating elements

A. On/Off button





Installing the device

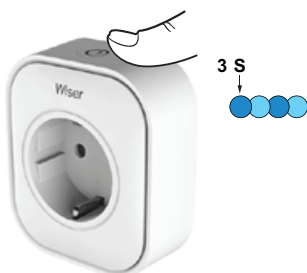
Refer to the installation instruction supplied with this product.

Pairing the device

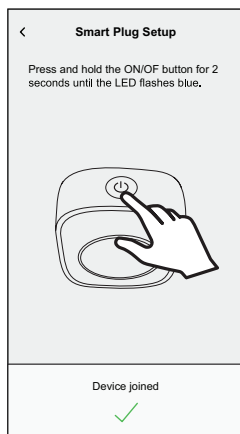
Using the Wiser Home app, pair your Plug with the **Wiser Hub** to access and control the Plug.


To pair the Plug:

1. On the Home page, tap .
2. Tap **Devices** >  and tap **Appliances** > **Smart Plug** > **Next**.
TIP: The next screen shows the joining process of the Plug.
3. Press the Plug top push-button fast three times.




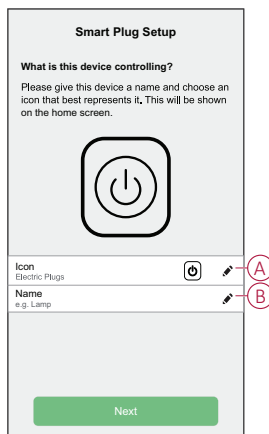
4. Wait for a few seconds until Plug is successfully joined.



5. Once the device is joined, tap  (A) and select an icon suitable for your load and tap **Save**.

NOTE: Electric plug icon is assigned by default.

6. Tap  (B) and assign a name.



7. Tap **Next** to assign the Plug to an existing room or a new room.
8. Tap **Submit**.

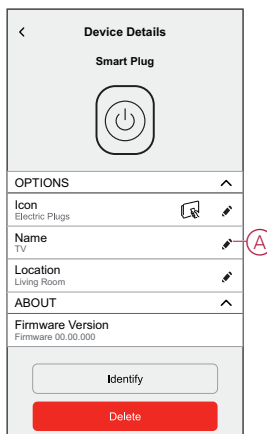
You can see the added Plug on the **Home** page under the room tab or under **ALL** devices.

Configuring the device

Renaming the device

Using the Wiser Home app, you can rename the Plug.

1. On the Home page, tap .
2. Tap **Devices > Smart Plug > Device Name (A)** to rename the Plug.

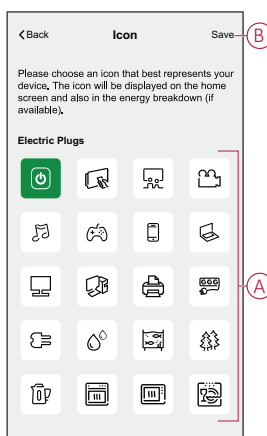


Changing the icon

You can change the icon of the device.

1. On the **Home** page, tap  > **Devices > Smart Plug**.
2. Tap  **Icon**, select an icon of your choice (A) and tap **Save** (B).


IMPORTANT: If you have installed Plug and PowerTag, changing the icon to another category will delete all the historical data. Refer to Energy view of individual devices.

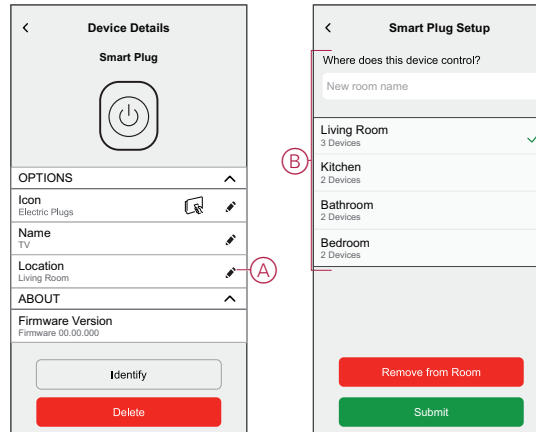


Setting the device location

Using the Wiser Home app, assign the Plug location in the room (such as bedroom, living room, dining room etc.).

To assign the Plug location:

1. On the Home page, tap .
2. Tap **Devices > Smart Plug > Location (A)** to assign the Plug to the existing room or a new room (B) and tap **Submit**.




NOTE:

- Tap **Remove from Room** to remove the device from the existing room.
- TV is the name given to the device by the user when pairing with the **Wiser Hub**. You can assign a name based on your load. Example, Light Plug.

Identifying the device

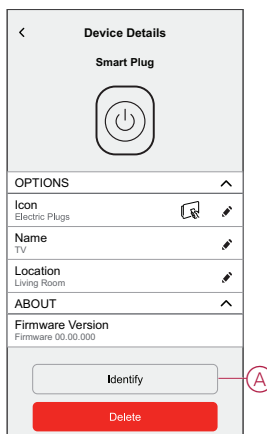
Using the Wiser Home app, you can identify the Plug from the other available devices in the room.

To identify the Plug:

1. On the Home page, tap .
2. Tap **Devices > Smart Plug > Identify (A)**.

NOTE:

- This feature flashes the Plug LED, so you can find the actual device. It may take up to a minute to start and flash the Plug LED.
- The Plug LED will continue to flash until you tap **OK**.



Using the device

Switching Operation

To use the plug insert into a wall socket, and it needs to stay switched on for it to function. You can manually turn on/off the plug by pressing the plug top push-button, or you can access the plug via the home screen to switch them on/off by tapping the on/ off button.

Switching Operation Manually


You can turn on/off the plug manually by pressing a push-button button, this will be displayed in green beside the plug, and the plug will provide power to the electrical appliance connected to it.

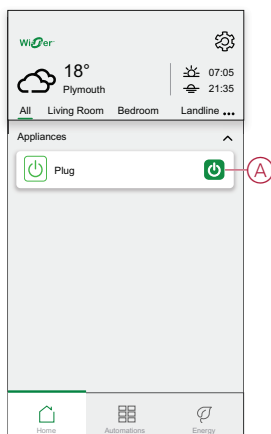


Switching Operation using the app

You can turn On/Off the Plug remotely using the Wiser Home app.

To turn On/Off the Plug using the app:



1. Go to the Home page, tap **All** devices or a room tab where the Plug is located.
2. Tap  (A) to turn On or Off the Plug.

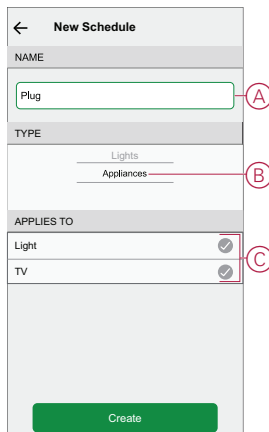



Creating a Schedule

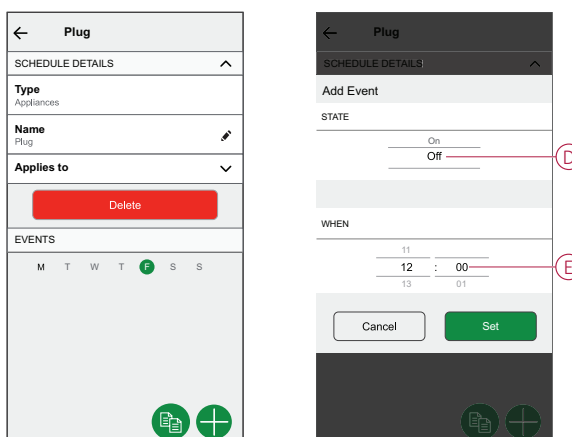
The Plug can be controlled and triggered by a schedule. Once the schedule is set, your system will follow the active schedule. You can create or modify the schedules at any time.

To create a schedule:



1. On the **Home** page, tap  > **Schedules** > .
2. Enter a name of the schedule (A).
3. Select a device type (B).
4. Select the list of devices (C) to which the schedule must apply.
5. Tap **Create**.



6. Tap .
7. Select a state (On/Off) (D), time period (E) and tap **Set**.



TIP:

- You can add multiple schedules based on your requirement. Select days, tap , set on/off state and time.
- You can copy the existing schedule to another schedule or to the days of your choice. Tap .
 - Tap **Schedule** and select an existing schedule and tap **Copy**.
 - Tap **Day** and select the days you want to assign and tap **Copy**.

Enabling a Schedule

To follow the schedule for the Plug:



1. Go to the Home page, tap **All** devices or a room tab where the Plug is located.
2. Tap **Follow schedule** toggle switch to turn on/off Schedule.


Voice control

You can control the plug using Amazon Alexa® and Google home by giving a voice command.

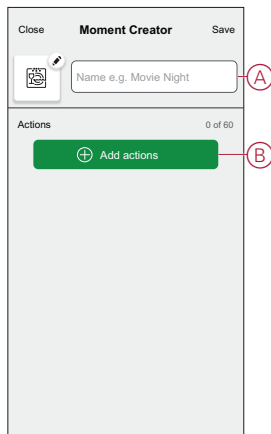
Creating a moment

Moment allows you to group multiple actions that are usually performed together. By using the Wiser Home app, you can create moments based on your needs. To create a moment:

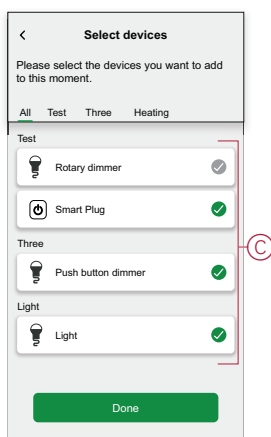
1. On the **Home** page, tap .
2. Go to **Moments** >  to create a moment.
3. Enter the name of the moment (A).

TIP: You can choose the cover image that best represents your moment by tapping .


4. Tap **Add actions** (B) to select the list of devices.

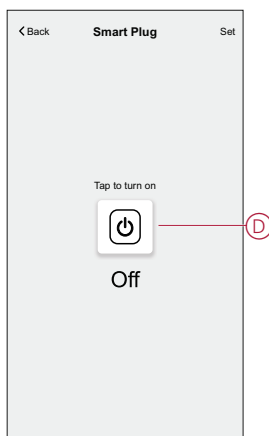


5. In the **Add actions** menu, you can select the devices (C).



6. Once all the device are selected, tap **Done**.
7. On the **Moment creator** page, tap on the device to set the condition. For example, select Plug.

- Tap  (D) to turn on.





When the desired condition is set, tap **Set**.

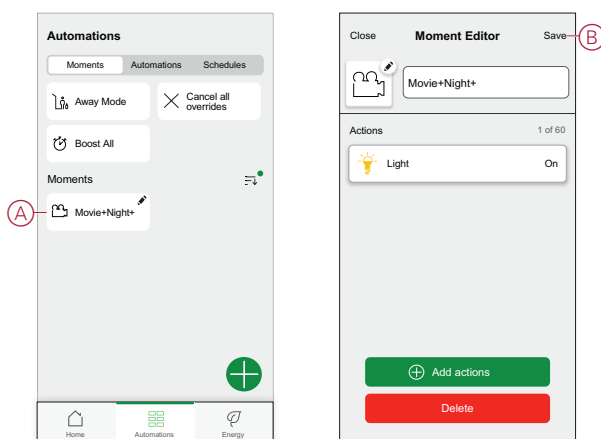
8. Once all conditions are set, tap **Save**.

Once the moment is saved, it is visible on the **Moments** tab. You can tap on the moment to enable it.

Editing a moment



To edit a moment:

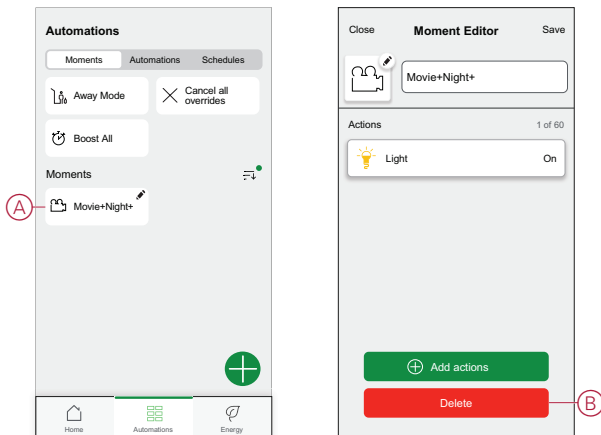
1. On the **Home** page, tap .
2. Go to **Moments**, locate the moment you want to edit and tap  (A).
3. On the **Moment Editor** page, you can tap each item to change the settings and tap **Save** (B).



Deleting a moment

To delete a moment:



1. On the **Home** page, tap .
2. Go to **Moments**, locate the moment you want to delete and tap  (A).
3. On the Moment Editor page, tap **Delete** (B) and tap **Ok**.

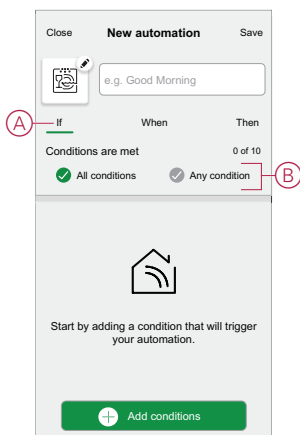


Creating an automation

An automation allows you to group multiple actions that are usually done together, triggered automatically or at scheduled times. By using the Wiser app, you can create automations based on your needs.

To create an automation:

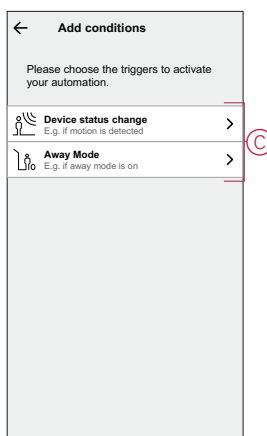
1. On the **Home** page, tap .
2. Go to **Automation** >  to create an automation.
NOTE: Max. 10 automations can be added.
3. Tap **If** (A) and select any of the following conditions (B):
 - **All conditions:** This triggers an action only when all conditions are met.
 - **Any condition:** This triggers an action when at least one condition is met.



4. Tap **Add conditions** and select any of the following (C):

- **Device status change:** To select a device to enable automation.
- **Away Mode: Enable / Disable** away mode to trigger an action.

TIP: Away mode can also be used as a trigger to turn off the lights, dimmer or closing the shutter etc. For more information refer to *Away mode*.

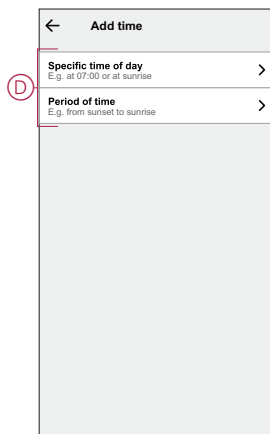
**NOTE:**

- Max. 10 conditions can be added.

- To remove an added condition, swipe left and tap .

5. To set a specific time for your automation, tap **When** > **Add time** and select any of the following (D):

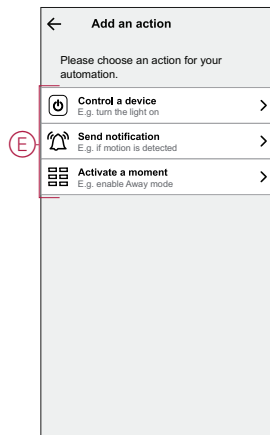
- **Specific time of the day: Sunrise, Sunset, Custom.**
- **Period of time: Daytime, Night time, Custom.**


**NOTE:**

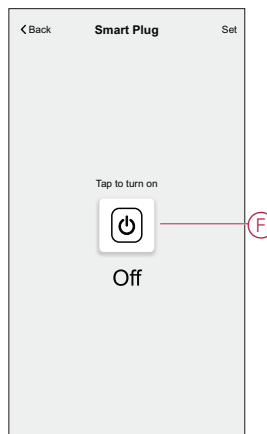
- Max. 10 entries can be added.

- To remove a specific time, swipe left and tap .


6. To add an action, tap **Then > Add an action** and select any of the following (E):
 - **Control a device:** Select a devices that you want to trigger.
 - **Send notification:** Turn on the notification for the automation.
 - **Activate a moment:** Select the moment that you want to trigger.




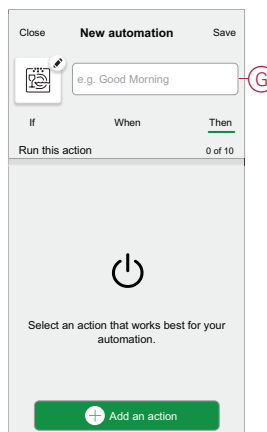
7. Tap **Control a device > Smart Plug**, tap  (F) to turn on/off, then tap **Set**.



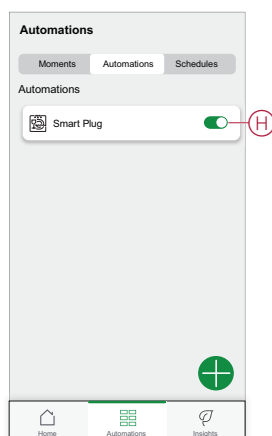
NOTE:

- Max. 10 actions can be added.
- To remove an action, swipe left on the action and tap .

8. Enter the automation name (G).
You can choose the cover image that represents your automation by tapping .




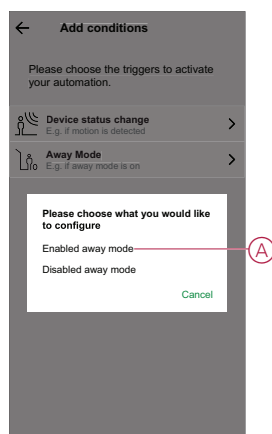
9. Tap **Save**.
Once the automation is saved, it is visible on the **Automation** tab.
Using the (H) you can enable or disable the automation.



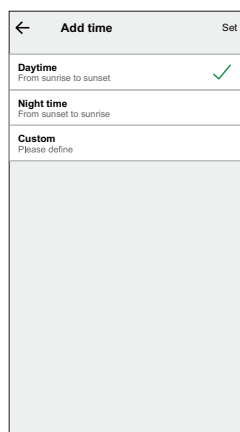
Example of an automation

In the example below, if away mode is enabled during Daytime, then Plug will turn off.

1. Go to **Automation** >  to create an automation.
2. To add a condition, tap **Add Condition** > **Away Mode** > **Enabled away mode** (A).

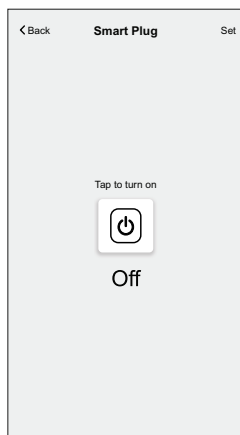


3. Read the information and tap **OK**.
4. To set the time, tap **When** > **Add time** > **Period of time** > **Day time** > **Set**.




5. To add an action, tap **Then > Add an action > Control a device > Smart Plug > Set.**

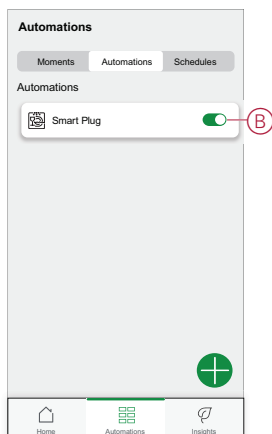
TIP: You can turn on/off the plug.




6. Read the information and tap **OK.**
7. Enter the name of the automation.

TIP: You can choose the cover image that represents your automation by tapping .


8. Tap **Save.**
Once the automation is saved, it is visible on the **Automation** tab.



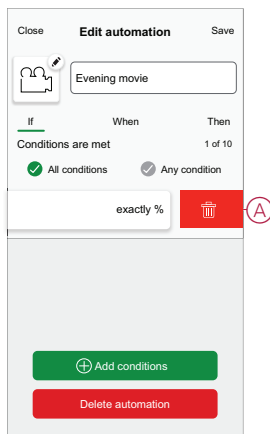
NOTE: You can enable or disable saved automations on the **Automation** tab by using  (B).

Editing an automation

To edit an automation:

1. On the **Home** page, tap .
2. Go to **Automation**, tap the automation you want to edit.
3. On the **Edit automation** page, you can:
 - Change the icon.
 - Rename the automation.
 - Change/Delete the condition or action.


- Remove the Condition or Action by swiping it to the left and tapping the **bin** (A).

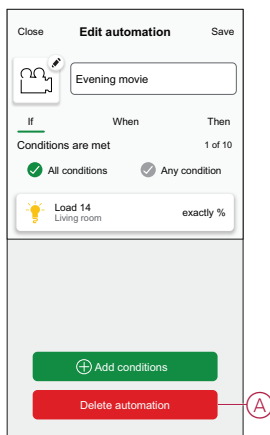


- Add a new condition or action and then tap **Save**.

Deleting an automation


To delete an automation:

- On the **Home** page, tap .
- Go to **Automation**, tap the automation you want to delete .
- On the Edit automation page, tap **Delete Automation** (A) and tap **Ok**.

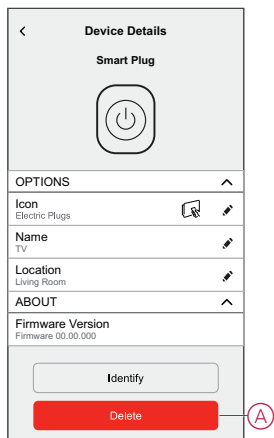


Removing the device

Using the Wiser home app, you can remove the Plug from the Wiser system. To delete the Plug:

- On the Home page, tap .

2. Tap **Devices > Smart Plug > Delete (A)**.



Resetting the device

To reset the device, follow these steps:

1. Ensure that the Plug is installed in a wall socket.
2. Press and hold the ON/OFF button.
3. In five seconds the LED will flash blue six times then go out. The Plug is now reset.

LED indications

Normal use

User Action	LED indication	Status
Plug into wall socket (not joined to the Wiser Hub)	1 red flash followed by 3 purple/ red flashes followed by 2 blue flashes.	–
Plug into wall socket (joined to the Wiser Hub)	The red flash followed by solid purple for 1 second followed by solid blue for 1 second.	–
Press ON/OFF button	Solid blue	Socket ON
Press ON/OFF button	Off	Socket OFF
Press and hold ON/OFF button for 2 seconds	Quick blue flashes. If the Plug successfully joins the Hub, the LED stops flashing. If the Plug fails to join the Hub, after 60 seconds, the quick blue flashes are followed by 6 slow flashes.	Pairing Plug to the Wiser Hub
Press ON/OFF button	Quick blue flashes followed by 6 slow blue flashes.	Pairing mode interruption
Press and hold the ON/OFF button for 5 s.	6 slow blue flashes.	Reset the Plug and return to factory settings

Technical Data

Output type	CCTFR6500	Type E
	CCTFR6501	Type F or Schuko
Nominal voltage	AC 100-240 V, 50/60 Hz	
Nominal power	3000 W	
Nominal current	13 A	
Standby	Maximum 0.5 W	
Operating Temperature	0 °C to +40 °C	
Storage Temperature	-10 °C to +40 °C	
IP rating	IPX0	
Operating frequency	2400 MHz (ISM Band)	
Max. radio frequency power transmitted	+8 dBm	
Pollution Class	2	
Software Class	A	
Product dimensions (H x W x D)	79.6 x 67.9 x 72.5 mm	

Compliance

Compliance information for Green Premium products

Find and download comprehensive information about Green Premium products, including RoHS compliance and REACH declarations as well as Product Environmental Profile (PEP) and End-of-Life instructions (EOLI).

<https://checkaproduct.se.com/>



General information about Green Premium products

Click the link below to read about Schneider Electric's Green Premium product strategy.

<https://www.schneider-electric.com/en/work/support/green-premium/>



Trademarks

This guide makes reference to system and brand names that are trademarks of their relevant owners.

- Zigbee® is a registered trademark of the Connectivity Standards Alliance.
- Apple® and App Store® are brand names or registered trademarks of Apple Inc.
- Google Play™ Store and Android™ are brand names or registered trademarks of Google Inc.
- Wi-Fi® is a registered trademark of Wi-Fi Alliance®.
- Wiser™ is a trademark and the property of Schneider Electric, its subsidiaries and affiliated companies.

Other brands and registered trademarks are the property of their respective owners.

Schneider Electric
35 rue Joseph Monier
92500 Rueil Malmaison
France

+ 33 (0) 1 41 29 70 00

www.se.com

As standards, specifications, and design change from time to time,
please ask for confirmation of the information given in this publication.

© 2021 – 2023 Schneider Electric. All rights reserved.

DUG_Wiser Plug_WH-03