

Product End of Life Instructions

Harmony XV4 ø40mm Optimum Tower Light





Potential disassembly risks

The information provided in this document assumes that the product is completely de-energized and uninstalled (refer to the instructions provided in the appropriate product manuals).

Dismantling/disassembling the product may entail hazards caused by, for example, sharp edges, chemical aggression or ejected parts.

⚠ WARNING

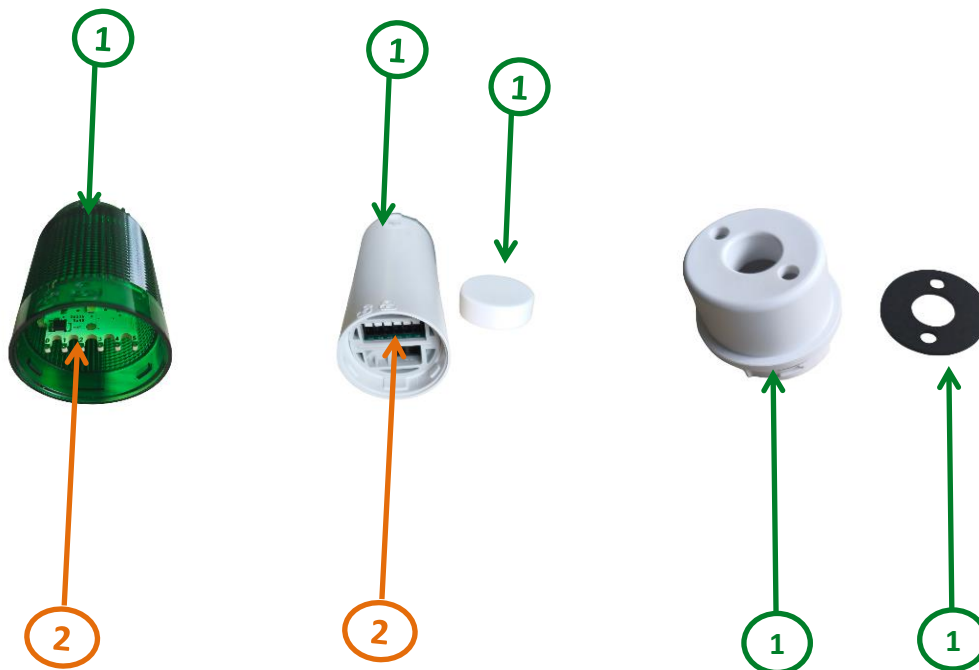
HAZARD DUE TO INSUFFICIENT PROTECTION

- Implement all safety measures required by the applicable regulations and by the processes used to dismantle/disassemble and dispose of the product.
- Use all necessary personal protective equipment such as gloves and goggles.

Failure to follow these instructions can result in death or serious injury.



End of Life Instructions



Recommendation	Number on drawing	Component / Material	Weight (in g)	Comment
To be dismantled	1	Dome, Base Enclosure, O-ring, Cap, Adaptor	138	Plastic Parts
To be depolluted	2	Electronic Components	54	PCBA
To be dismantled	Others	Spring, Terminal Clamp	8	Metal Parts

Product description

Manufacturer identification	Schneider Electric Industries SAS
Brand name	Schneider Electric
Product function	The representative product used in the analysis is a pre-assembled LED indicator tower light consisting of a base, light modules and adapter (XV4C29, XV4C24C, XV4C21BFX, XV4C010). The product is an audible signaling units designed for indication of operating status in industrial applications. Examples: starting or stopping a machine, insufficient material, calling personnel etc.
Product reference	XV4C29, XV4C24C, XV4C21BFX, XV4C010
Total representative product mass	200 g
Representative product dimensions	H 250mm x L 40mm x W 40mm
Accessories	No special accessories needed
Date of information release	08-2025

Additional information

Legal information	This product family is in the scope of European Union directive 2012/19/EU on Waste Electrical and Electronic Equipment (WEEE). The product family must be disposed according to the legislation of the country. This document is intended for use by end of life recyclers or treatment facilities. It provides the basic information to assure an appropriate end of life treatment for the components and materials of the product.
In case of special transportation: transportation method	No special transportation required
Recyclability potential	72% The recyclability rate was calculated from the recycling rates of each material making up the product based on REEECY'LAB tool developed by Ecosystem, for components/materials not covered by the tool, data from the EIME database and the related PSR was taken. If no data was found a conservative assumption was used (0% recyclability).

Schneider Electric Industries SAS
Country Customer Care Center
<http://www.se.com/contact>
35, rue Joseph Monier
CS 30323
F- 92500 Rueil Malmaison Cedex
RCS Nanterre 954 503 439
Capital social 928 298 512 €

www.se.com

ENVEOLI2508017_V1

Published by Schneider Electric

© 2023 - Schneider Electric – All rights reserved

08-2025