

# BVA2nn Ball Valves and Actuators

## DN15-50

The BVA2nn Ball Valves and Actuators (DN15-50) is a motorized control valve used to control hot and cold water in heating, ventilation, and air conditioning (HVAC).

### Regulatory Compliance and Safety Information

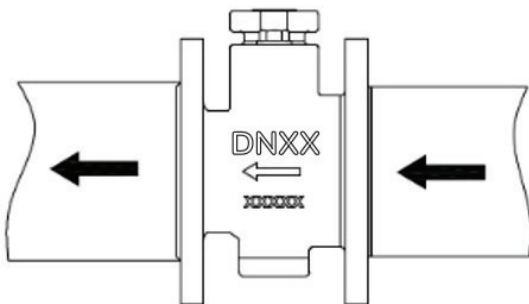
Electrical equipment should be installed, operated, serviced, and maintained only by qualified personnel. No responsibility is assumed by Schneider Electric for any consequences arising out of the use of this material.

Carefully read these instructions and all information relevant to this product before trying to install it.

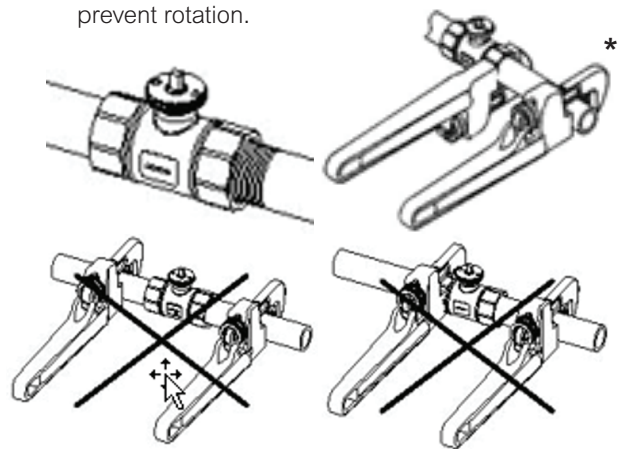
The technical literature and declarations of conformity can be accessed by searching for the part number on the Schneider Electric website, [www.schneider-electric.com](http://www.schneider-electric.com). Contact your local Schneider Electric sales office for a hard copy of the documentation or for additional information.

### Installation

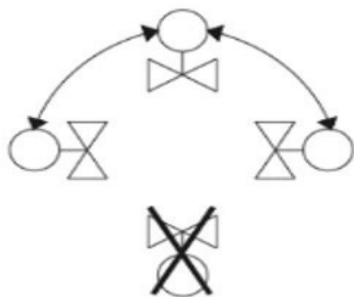
- 1 Ensure the flow direction correctly follows the arrow shown on the valve.



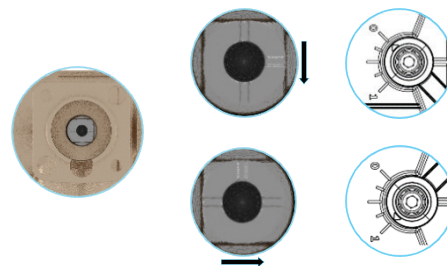
- 2 Threaded, DN 15...50  
\* Wrenches must be applied on the same pipe to prevent rotation.



- 3 Actuator/valve assembly can be installed in any position other than upside-down.

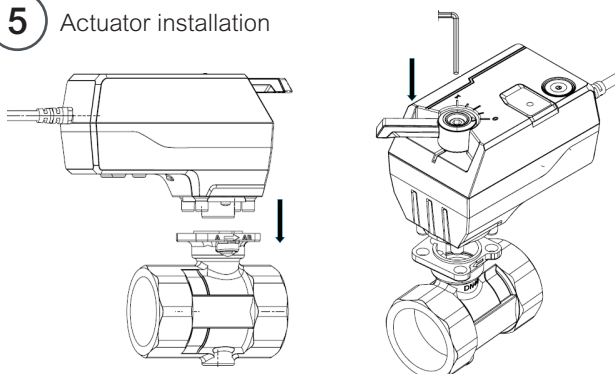


- 4 Valve Position



Note: Ensure adequate space around actuator/valve assembly for future disassembly.

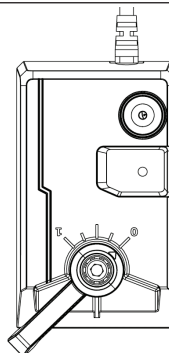
- 5 Actuator installation



## Actuator Indicators

### Indicator Lamp

LED Color	Status	Description
Green	Steady	Normal operating mode
Orange	Flicker (frequency~ 1Hz)	Self-stroking mode of operation
Red	Flicker (frequency~ 2Hz)	Error alarm

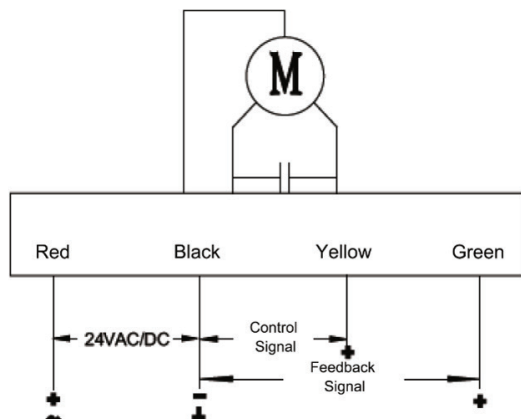


- Normal (green)
- Self-Stroking (orange)
- Error (red)
- No Power (not illuminated)

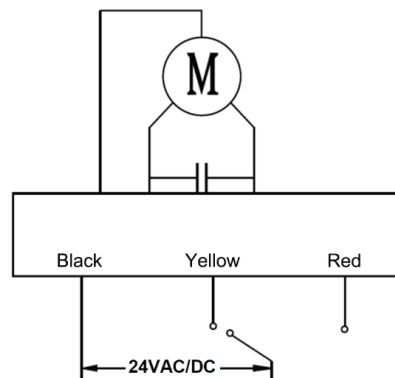
Indicator Lamp

## Wiring Diagram

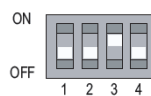
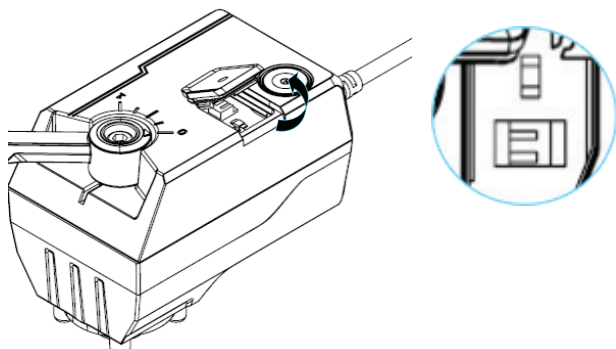
### Modulating



### 3-Position



## DIP Switch



DIP	Function	Setting	Description
S1-1	Control/feedback range	ON	4 ~ 20 mA or 2 ~ 10 V DC
		OFF	0 ~ 20 mA or 0 ~ 10 V DC (Factory setting)
S1-2	Control signal setting	ON	The control signal is a current type
		OFF	The control signal is a voltage type (Factory setting)
S1-3	Impedance match control signal	ON	Voltage type (Factory setting)
		OFF	Current type
S1-4	Feedback signal setting	ON	Feedback signal is a current
		OFF	Feedback signal is a voltage type (Factory setting)

UK CA	UK Representative	Manufacturer
	Schneider Electric Limited Stafford Park 5 Telford, TF3 3BL United Kingdom	Schneider Electric Fabriksvägen 1 137 37 Västerhaninge Sweden

