



HAZARD OF ELECTRIC SHOCK

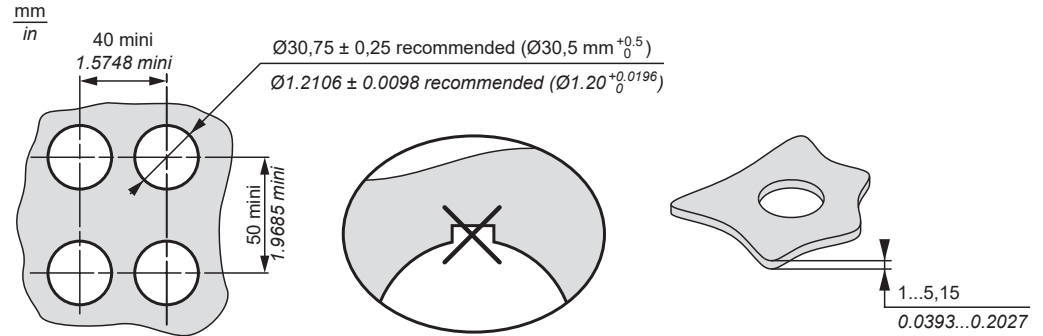
- Install ZB4FBZ100 following the installation conditions described below.
- Hole shape and diameter, tightening torques and SPACER orientation must comply with these instructions.
- Connect ZB4FBZ100 to the grounding circuit.
- Periodically check the tightening torque.
- Do not use with 9001 Range accessories.

Failure to follow these instructions will result in death or serious injury.

For EU Declaration of Conformity see: www.schneider-electric.com

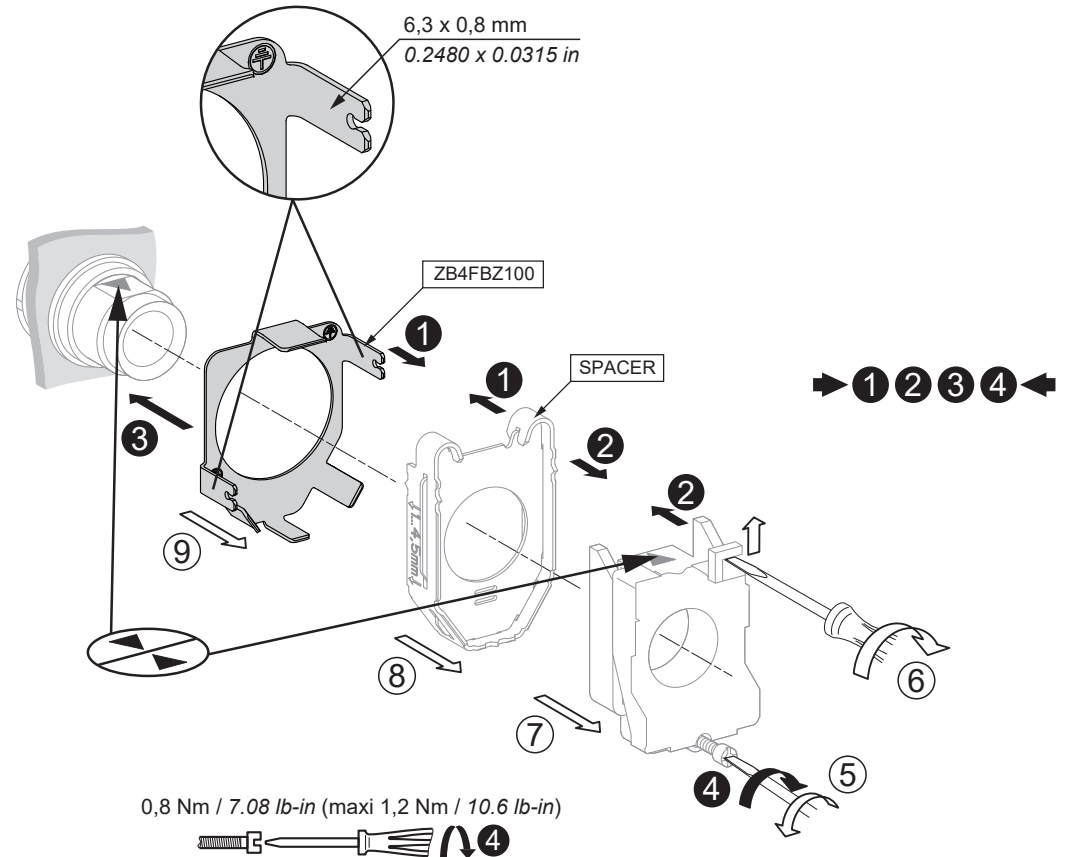
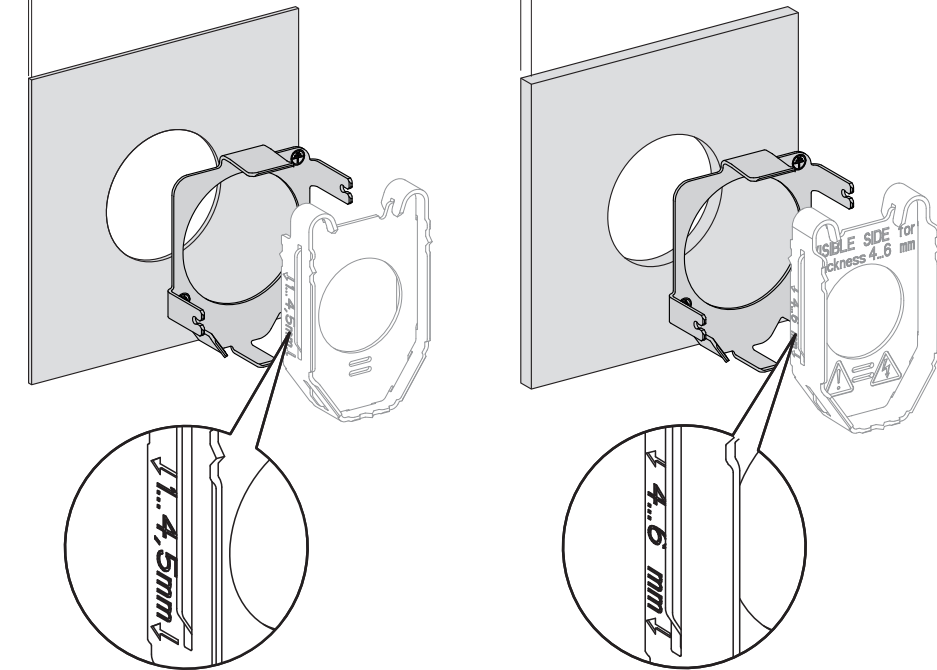
Electrical equipment should be installed, operated, serviced, and maintained only by qualified personnel. No responsibility is assumed by Schneider Electric for any consequences arising out of the use of this material.

For use on flat surface of a type 4, type 4X, type 12, and type 13 enclosure.



1...3,6 mm
0.0393...0.1417 in

3,4...5,15 mm
0.1338...0.2027 in



Уполномоченный поставщик в РФ:

АО «Шнейдер Электрик»
Адрес: 127018, Россия, г. Москва,
ул. Двинцев, д.12, корп.1
Тел.: +7 (495) 777 99 90 - Факс +7 (495) 777 99 92

Қазақстан Республикасында ресми жеткізуші:

ЖШС «Шнейдер Электрик»
Мекен-жайы: Қазақстан Республикасы, Алматы қ.,
Достық даң., «Кен Дала» Бизнес Орталығы, 5-ші қабат.
Тел.: +7 (727) 357 23 57 - Факс.: +7(727) 357 24 39