

Unica- Connected Wireless Switch 1-gang/2-gang

Device user guide

Information about features and functionality of the device.

10/2022

Legal Information

The Schneider Electric brand and any trademarks of Schneider Electric SE and its subsidiaries referred to in this guide are the property of Schneider Electric SE or its subsidiaries. All other brands may be trademarks of their respective owners.

This guide and its content are protected under applicable copyright laws and furnished for informational use only. No part of this guide may be reproduced or transmitted in any form or by any means (electronic, mechanical, photocopying, recording, or otherwise), for any purpose, without the prior written permission of Schneider Electric.

Schneider Electric does not grant any right or license for commercial use of the guide or its content, except for a non-exclusive and personal license to consult it on an "as is" basis. Schneider Electric products and equipment should be installed, operated, serviced, and maintained only by qualified personnel.

As standards, specifications, and designs change from time to time, information contained in this guide may be subject to change without notice.

To the extent permitted by applicable law, no responsibility or liability is assumed by Schneider Electric and its subsidiaries for any errors or omissions in the informational content of this material or consequences arising out of or resulting from the use of the information contained herein.

Table of Contents

Safety information	4
Unica- Connected Wireless Switch 1-gang/2-gang	5
For your safety	5
About the device	5
Installing the device	5
Pairing the device with Wiser Hub	6
Configuring the device	7
Setting the device location in the room	7
Renaming the device	8
Identifying the device	8
Removing the device from the system	10
Resetting the device	10
Using the device	11
Switching operation	11
Assigning an Action to the Wireless Switch	11
Assigning a Moment to the Wireless Switch	13
Removing configured Action/Moment	14
Replacing the battery	15
LED indications	15
Troubleshooting	16
Technical Data	16

Safety information

Important information

Read these instructions carefully and look at the equipment to become familiar with the device before trying to install, operate, service, or maintain it. The following special messages may appear throughout this manual or on the equipment to warn of potential hazards or to call attention to information that clarifies or simplifies a procedure.



The addition of either symbol to a “Danger” or “Warning” safety label indicates that an electrical hazard exists which will result in personal injury if the instructions are not followed.



This is the safety alert symbol. It is used to alert you to potential personal injury hazards. Obey all safety messages that accompany this symbol to avoid possible injury or death.

DANGER

DANGER indicates a hazardous situation which, if not avoided, **will result in** death or serious injury.

Failure to follow these instructions will result in death or serious injury.

WARNING

WARNING indicates a hazardous situation which, if not avoided, **could result in** death or serious injury.

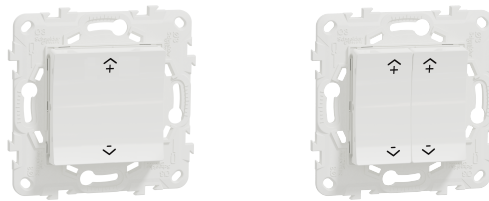
CAUTION

CAUTION indicates a hazardous situation which, if not avoided, **could result in** minor or moderate injury.

NOTICE

NOTICE is used to address practices not related to physical injury.

Unica- Connected Wireless Switch 1-gang/2-gang



NU5571xxW

For your safety

⚠ DANGER

HAZARD OF ELECTRIC SHOCK, EXPLOSION, OR ARC FLASH

While installing the device on a wall box or an existing switch outlet combination, always isolate the 230 V AC cables by applying an adhesive silver foil on the fixing plate.

Failure to follow these instructions will result in death or serious injury.

About the device

The Connected Wireless Switch 1-gang/2-gang (hereinafter referred to as **Wireless Switch**) is a battery-powered wireless switch that is used to control a group of Zigbee devices (such as light/shutter) within the same Zigbee network.

The Wireless Switch can be configured through the Wiser Home app.

Advantage of using a Wireless Switch:

- Easy to use and user-friendly interface: also good for children (placed lower on the wall) and for the elderly who may not be so familiar with smart phones.
- Easy to mount on the wall: no wiring required.

Features of a Wireless Switch:

- Using the app, you can add various Actions (such as lighting/shutter control) to the Wireless Switch.
- Using the app, you can add moments to the Wireless Switch (such as Movie Night Moment/Good Night Moment).
- Low battery notification in the app.

Installing the device



Refer to the installation instruction supplied with this product.

Pairing the device with Wiser Hub

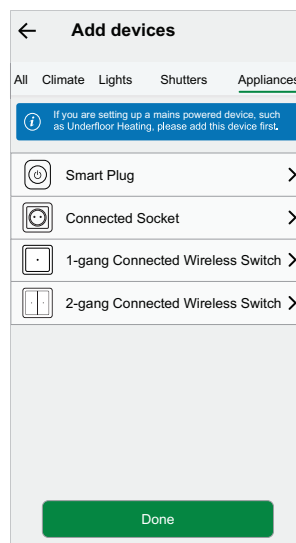
Using the Wiser Home app, pair your wireless switch with the **Wiser Hub** to access and control the Wireless Switch.

NOTE: You can change the Wireless Switch from 1-gang to 2-gang using the app during commissioning. If the Wireless Switch is already configured to 1-gang and you want to change it to 2-gang, then reset the device (1-gang), refer to [Resetting the device](#) and commission it again with 2-gang.

To Pair the Wireless Switch:

1. On the Home page, tap .
2. Tap **Devices** >  and tap **Appliances**.
3. In the app, select **1-gang Connected Wireless Switch** or **2-gang Connected Wireless Switch** as required.

TIP: For 1-gang/2-gang Wireless Switch, 2/4 push buttons are available for operation.



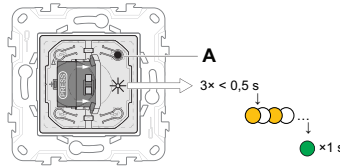
4. Tap **Next**.

TIP: The next screen shows the joining process of the **Wireless Switch**.

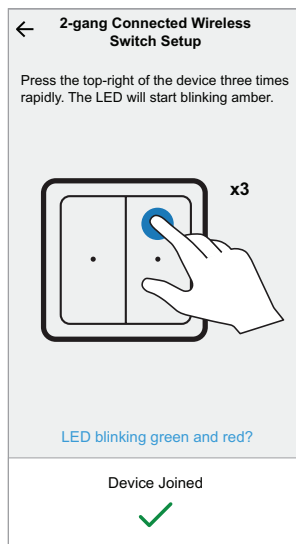
- Remove the rocker of the Wireless Switch and short press the top-right push button (A) 3 times.

Wait for a few seconds until the LED blinks amber and then turns green.

TIP: If LED blinks green and red, refer to the Troubleshooting, page 16.



Upon successful pairing, the app displays the device joining status.



- Tap **Next** to assign a name to the Wireless Switch and add it to an existing room or a new room.

The wireless switch is now listed under the **All** devices or room tab.

Hint:

- If the Wireless Switch is configured as 2-gang, and you wish to switch it to 1-gang, you must reset the device and pair it again as a 1-gang.
- If the Wireless Switch is configured as 1-gang, and you wish to switch it to 2-gang, you must reset the device and pair it again as a 2-gang.

For more information, refer to [Resetting the device](#), page 10.


- Assemble the rocker on the wireless switch.

Configuring the device

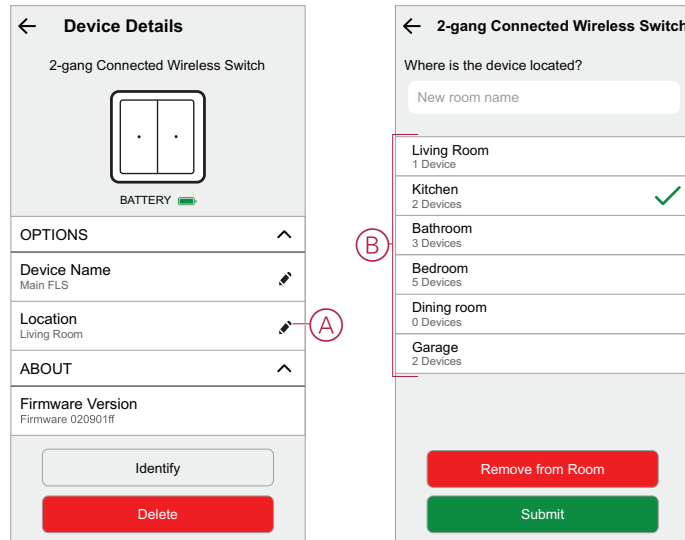
Setting the device location in the room

Using the Wiser Home app, you can add your Wireless Switch to any room (such as bedroom, living room, dining room etc.).

To add a Wireless Switch to a room:

- On the Home page, tap .

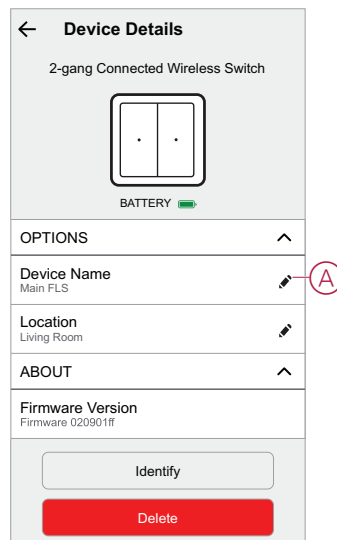
2. Tap **Devices > 2-gang Connected Wireless Switch > Location (A)** to assign the Wireless Switch to an existing room or a new room (B) and tap **Submit**.



Renaming the device

Using the Wisier Home app, you can rename your Wireless Switch.

1. On the Home page, tap .
2. Tap **Devices > 2-gang Connected Wireless Switch > Device Name (A)** to enter a new name.



Identifying the device

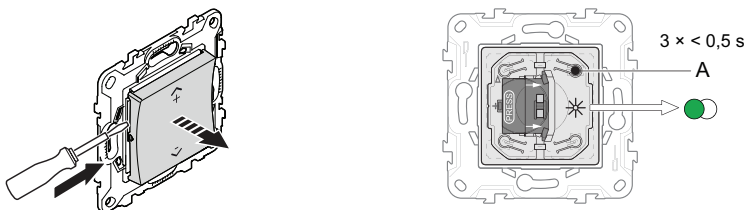
Using the Wisier Home app, you can identify a wireless switch from the other available devices in the room.

To identify the wireless switch:

1. Remove the rocker.

- 2. Short press the push button (A) 3 times in quick succession.

The wireless switch wakes up for a minute and the status LED blinks green 5 times and then stops.

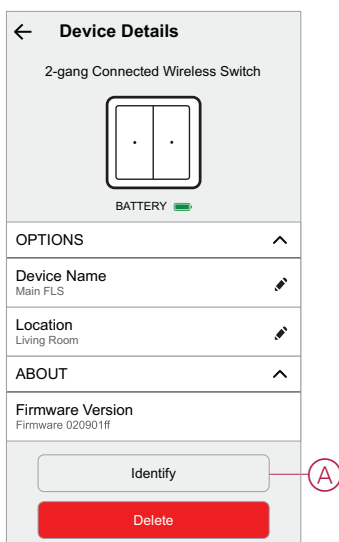


- 3. Tap  > **Devices** > **2-gang Connected Wireless Switch** > **Identify (A)** in the app.

The status LED blinks green upon successful identification of the wireless switch.

NOTE: It can take up to a minute for the wireless switch to indicate the status LED.

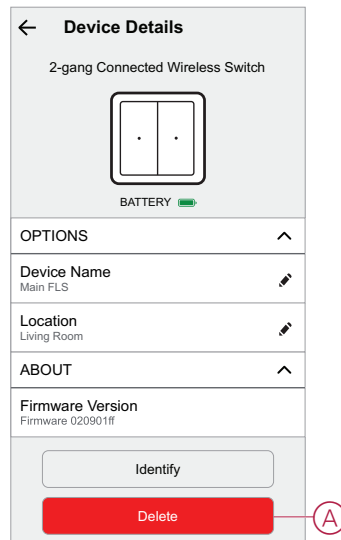
- 4. Tap **OK** when you have finished identifying the wireless switch.
- 5. Assemble the rocker on the wireless switch.



Removing the device from the system

Using the Wiser Home app, you can remove the Wireless Switch from the Wiser system.

1. On the Home page, tap .
2. Tap **Devices > 2-gang Connected Wireless Switch > Delete (A)**.



NOTE: By removing the device, it is reset to factory default.

TIP: If the device is still in the system, reset the device manually. Refer to reset the device, page 10.

Resetting the device

You can reset the wireless switch manually as required:

- When the Hub is replaced.
- Switching from 1-gang to 2-gang or vice versa.

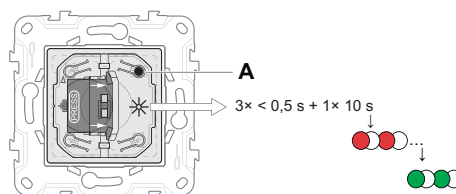
To reset the Wireless Switch:

1. Remove the rocker.
2. Short press (< 0,5 s) the push button (A) 3 times and then press and hold it (> 10 s).

After 10 s, the status LED blinks red.

3. Release the push button.
 - The status LED stops blinking upon successful reset of the device.
 - The wireless switch restarts and blinks green for few seconds. After reset, the status LED turns off.

NOTE: All configuration data, user data, and network data are deleted.

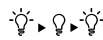
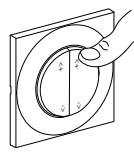


4. Assemble the rocker on the Wireless Switch.

Using the device

Switching operation

You can operate the Wireless Switch by pressing the push button manually.



Light

Short press the top (∧+) or bottom (∨-) the wireless switch to turn on or off the light.



Long press the top (∧+) or bottom (∨-) wireless switch (> 0,5 s) to increase or decrease the brightness.



Shutter

Long press top (∧+) or bottom (∨-) wireless switch (> 0,5 s) to move the blind up or down.

Moment

Short press the push button to activate a Moment.

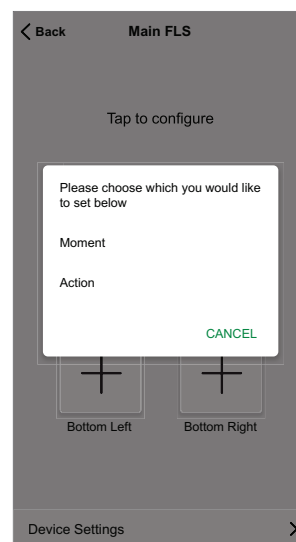
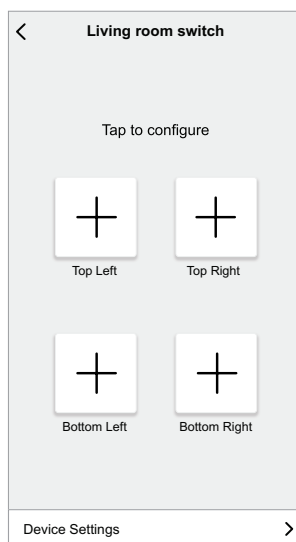
TIP: You can configure Wireless Switch push button with Action/ Moment using the app.

Assigning an Action to the Wireless Switch

Using the Wiser Home app, you can configure an "Action" to the Wireless Switch (such as turning on/off the lights, moving the shutter up or down or any combination).

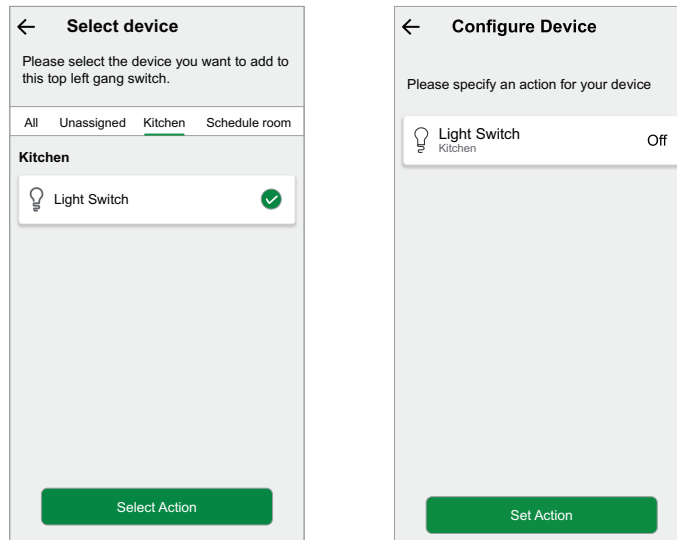
To configure an Action to the Wireless Switch:


1. On the **Home** page, tap the Wireless Switch under **All** devices or under the room (tab).
2. Tap any key and select **Action**.

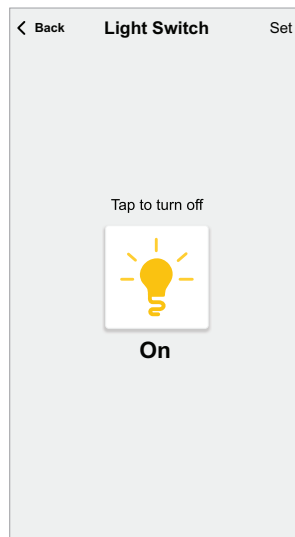


3. Select the device and tap **Select Action**.

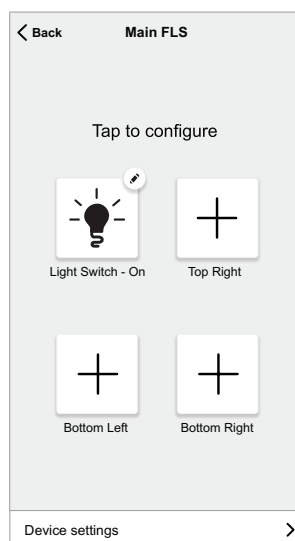
4. On the **Configure Device** page, select the **Light Switch**.



5. Tap  to turn On the light and tap **Set > Set Action**.



In the next screen, ✓ shows that the Action is successfully configured. The **Top Left** key is configured with **Light Switch: On**.



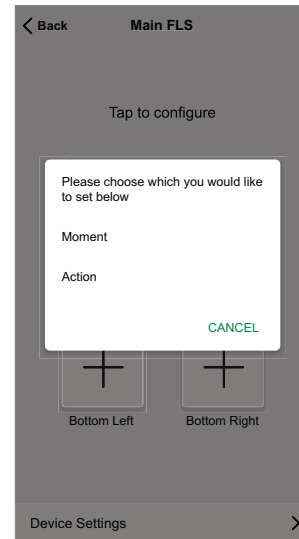
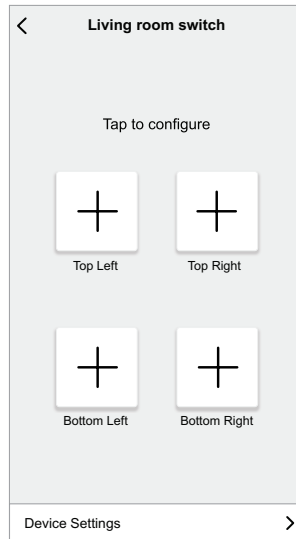
Assigning a Moment to the Wireless Switch

A Moment allows you to group multiple actions that are usually done together. Using the Wiser Home app, you can configure a Moment to the Wireless Switch (such as Good Night Moment: Fan on, light dimming 50%, shutter close).

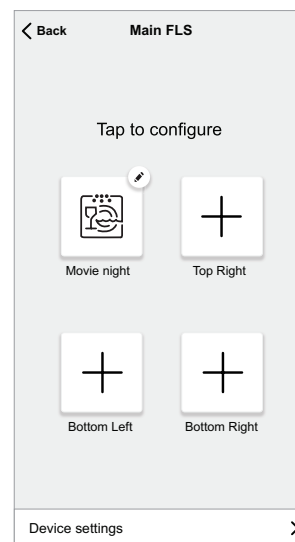
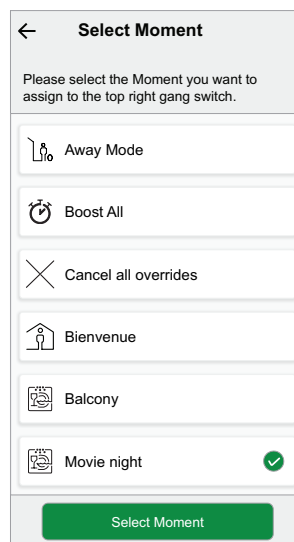
TIP: A moment can be assigned to any of the four keys individually.

To configure a Moment to the Wireless Switch:

1. On the Home page, tap the Wireless Switch under **All** devices or under the room (tab).
2. Tap any key and select **Moment**.



3. Select a Moment which you want to add to the key and tap **Select Moment**.
In the next screen, ✓ shows the Moment is successfully configured.

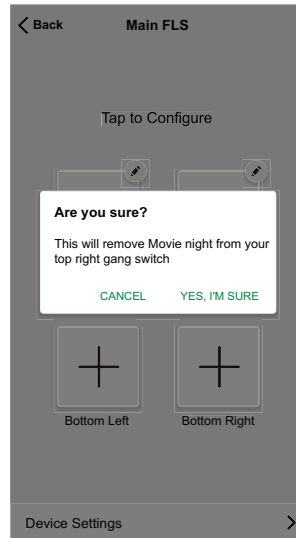


Removing configured Action/Moment

Using the Wiser Home app, you can remove the configured Action or Moment from the Wireless Switch key.

To remove the configured Action/Moment:

1. On the Home page, tap the Wireless Switch under **All** devices or under the room (tab).
2. Tap push button and tap **Action / Moment >Remove > YES, I'M SURE** to remove configured Action/Moment from the Wireless Switch key.



Replacing the battery

Replace the wireless switch when the battery level is low. The battery level can be seen in the app.

⚠ WARNING

CHEMICAL BURN HAZARD

Keep batteries out of reach of children. If swallowed, seek immediate medical attention.

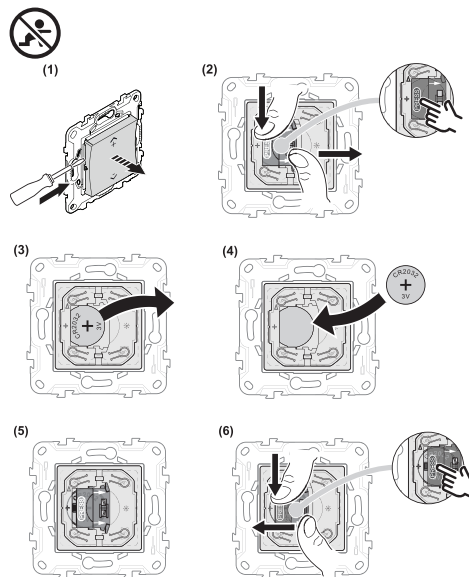
Failure to follow these instructions can result in death, serious injury, or equipment damage.

NOTE: The battery lid is designed with child lock protection.

1. Remove the rocker using a screwdriver.
2. Press and hold the battery lid at the marked area while sliding it to open.
3. Remove the old battery and press any push button for a few seconds.



NOTE: Dispose the used batteries, as per statutory regulations.

4. Insert a new battery with plus (+) symbol facing outward.
5. Place the battery lid.
6. Press and hold the battery lid at the same spot while sliding it to close.





LED indications


Pairing the device

User Action	LED Indication	Status
Press the push button 3 times	LED blinks orange, once per second. 	Pairing mode is active for 30 seconds. When pairing is completed, LED displays solid green for a few seconds, before turning Off. 



Resetting the device

User Action	LED Indication	Status
Press the push button 3 times and hold it down once for > 10 s.	LED blinks red, once per second. 	The device is in reset mode. The device then restarts and the LED starts blinking green, before turning Off. 

Battery level

LED Indication	Status
LED blinks red once, when a push button is pressed. 	The battery is low (< 10%), NOTE: A notification pop-up will appear on the app.

Troubleshooting

Symptom	Possible cause	Solution
LED blinks red.	The Wireless Switch battery is low or drained.	Replace the Wireless Switch battery, page 15. NOTE: A notification pop-up will appear on the app.
The Wireless Switch displays offline in the app.	The Wireless Switch battery is low or drained.	Replace the Wireless Switch battery, page 15.
	The Wireless Switch is disconnected from the network.	Press any push button on the Wireless Switch. NOTE: The first press does not trigger Wireless Switch operation.
The device is not able to connect with the Hub. After pressing top-right push button 3 times, the device LED blinks red/green for 30 s. 	Pairing mode has changed to Bluetooth mode.	Press the top-right push button on the device 3 times then hold for 20 s, until the LED blinks red. The device should reboot into the correct mode (Zigbee mode). 

Technical Data

Battery	CR2032
Battery life	Up to 5 years (depending on frequency of use and quality of battery)
IP rating	IP20
Operating frequency	2405-2480 MHz
Max. radio-frequency power transmitted	<10 mW
Operating temperature	-5 °C to 45 °C
Relative humidity	5% to 95%
Communication protocol	Zigbee 3.0

Compliance

Compliance information for Green Premium products

Find and download comprehensive information about Green Premium products, including RoHS compliance and REACH declarations as well as Product Environmental Profile (PEP) and End-of-Life instructions (EOLI).

General information about Green Premium products

Click the link below to read about Schneider Electric's Green Premium product strategy.

<https://www.schneider-electric.com/en/work/support/green-premium/>

Find compliance information for a Green Premium product

Click the link below to search for a product's compliance information (RoHS, REACH, PEP and EOLI).

NOTE: You will need the product reference number or product range to perform the search.

<https://www.reach.schneider-electric.com/CheckProduct.aspx?cskey=ot7n66yt63o1xblflyfj>

Trademarks

This guide makes reference to system and brand names that are trademarks of their relevant owners.

- Zigbee® is a registered trademark of the Connectivity Standards Alliance.
- Apple® and App Store® are brand names or registered trademarks of Apple Inc.
- Google Play™ Store and Android™ are brand names or registered trademarks of Google Inc.
- Wi-Fi® is a registered trademark of Wi-Fi Alliance®.
- Wiser™ is a trademark and the property of Schneider Electric, its subsidiaries and affiliated companies.

Other brands and registered trademarks are the property of their respective owners.

Schneider Electric
35 rue Joseph Monier
92500 Rueil Malmaison
France

+ 33 (0) 1 41 29 70 00

www.se.com

As standards, specifications, and design change from time to time,
please ask for confirmation of the information given in this publication.

© 2022 – Schneider Electric. All rights reserved.

DUG_Unica-Wireless Switch_WH-01