

Odace - Connected Relay Switch 10 A

Device user guide

Information about features and functionality of the device.

10/2022

Legal Information

The Schneider Electric brand and any trademarks of Schneider Electric SE and its subsidiaries referred to in this guide are the property of Schneider Electric SE or its subsidiaries. All other brands may be trademarks of their respective owners.

This guide and its content are protected under applicable copyright laws and furnished for informational use only. No part of this guide may be reproduced or transmitted in any form or by any means (electronic, mechanical, photocopying, recording, or otherwise), for any purpose, without the prior written permission of Schneider Electric.

Schneider Electric does not grant any right or license for commercial use of the guide or its content, except for a non-exclusive and personal license to consult it on an "as is" basis. Schneider Electric products and equipment should be installed, operated, serviced, and maintained only by qualified personnel.

As standards, specifications, and designs change from time to time, information contained in this guide may be subject to change without notice.

To the extent permitted by applicable law, no responsibility or liability is assumed by Schneider Electric and its subsidiaries for any errors or omissions in the informational content of this material or consequences arising out of or resulting from the use of the information contained herein.

Table of Contents

Safety information	5
Odace - Connected Relay Switch 10 A	6
For your safety	6
About the device	6
Installing the device	6
Pairing the device	7
Configuring the device	8
Setting the device location	8
Renaming the device	8
Identifying the device	9
Removing the device from Wiser system	9
Resetting the device	10
Using the device	10
Switching On/Off the device manually	10
Turning On/Off device using app	11
Setting up a schedule	11
Moments	12
Automation	14
LED Indication	20
Technical Data	21

Safety information

Important information

Read these instructions carefully and look at the equipment to become familiar with the device before trying to install, operate, service, or maintain it. The following special messages may appear throughout this manual or on the equipment to warn of potential hazards or to call attention to information that clarifies or simplifies a procedure.



The addition of either symbol to a “Danger” or “Warning” safety label indicates that an electrical hazard exists which will result in personal injury if the instructions are not followed.



This is the safety alert symbol. It is used to alert you to potential personal injury hazards. Obey all safety messages that accompany this symbol to avoid possible injury or death.

DANGER

DANGER indicates a hazardous situation which, if not avoided, **will result in death or serious injury.**

Failure to follow these instructions will result in death or serious injury.

WARNING

WARNING indicates a hazardous situation which, if not avoided, **could result in death or serious injury.**

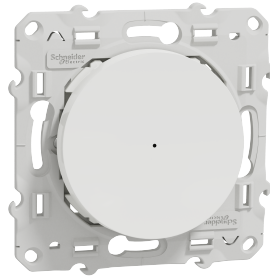
CAUTION

CAUTION indicates a hazardous situation which, if not avoided, **could result in minor or moderate injury.**

NOTICE

NOTICE is used to address practices not related to physical injury.

Odace - Connected Relay Switch 10 A



S5X0530W

For your safety

⚡ ⚠ DANGER

HAZARD OF ELECTRIC SHOCK, EXPLOSION, OR ARC FLASH

Safe electrical installation must be carried out only by qualified electrical personnel. Qualified electrical personnel must prove profound knowledge in the following areas:

- Connecting to installation networks
- Connecting several electrical devices
- Laying electrical cables
- Safety standards, local wiring rules, and regulations

Failure to follow these instructions will result in death or serious injury.

About the device

The Connected Relay Switch 10 A (hereinafter referred to as **relay switch**) is a push button device that can be used to switch LED, ohmic, inductive or capacitive loads manually or remotely.

Control options

Home control: To control the relay switch through the Wiser app you will need the **Wiser Hub**.

Direct operation: The relay switch can always be controlled directly on-site. You can also connect any number of mechanical push-buttons.

Installing the device

Refer to the Installation instruction supplied with this product.

Pairing the device

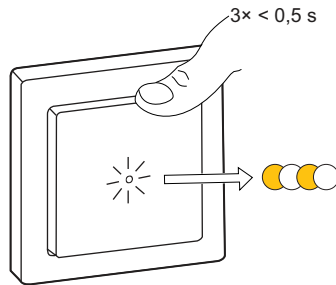
Using the Wiser Home app, pair your relay switch with the **Wiser Hub** to access and control the relay switch.

Follow the steps to pair the relay switch:

1. On the Home page, tap  icon.
2. Tap **Devices** >  icon and **Lights** > **1-gang** > **Next**.

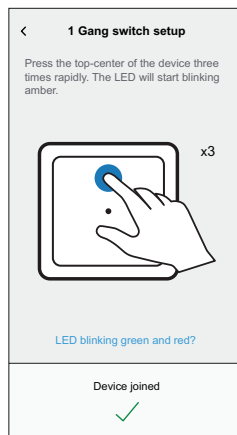
NOTE: The next screen shows the joining process of relay switch.

3. Short press the push button 3 times and make sure that the LED blinks amber.



4. Wait for a few seconds until the LED turns green. You can also see in the app that the device is joined.

NOTE: If the LED is blinking green and red, see the instructions by tapping the link **LED blinking green and red?**




5. Tap **Next** to enter the name of the device and assign the device to a new room or an existing room.

The relay switch is now listed under **All** devices.

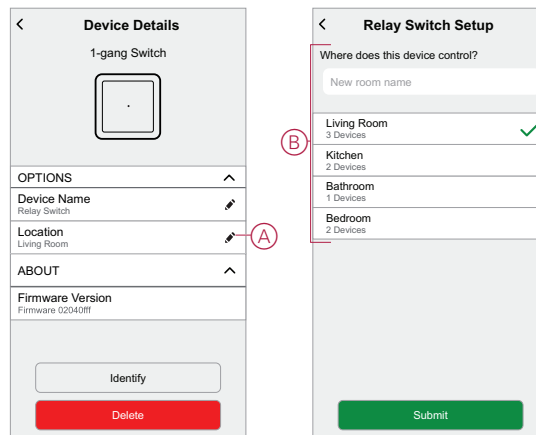
Configuring the device

Setting the device location

Using the Wisier Home app, add the relay switch to any room (such as living room, bedroom, kitchen etc).


1. On the Home page, tap  icon.
2. Tap **Devices > Lights > Relay switch > Location (A)** to assign the relay switch to an existing room or a new room (B) and tap **Submit**.

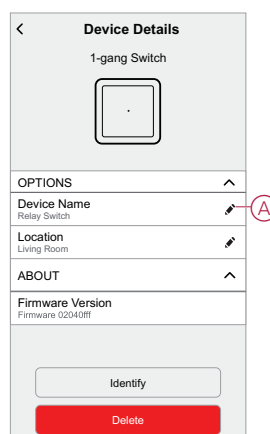
NOTE: Relay switch is the name given to the device by the user. Any name can be assigned when pairing with the **Wiser Hub**.



Renaming the device

Rename the device using the Wisier Home app.

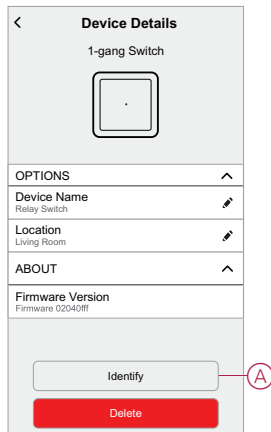
1. On the Home page, tap  icon.
2. Tap **Devices > Lights > Relay switch > Device Name (A)** to rename the device.



Identifying the device

Using the Wisier Home app, identify the relay switch among the devices available in a home.

1. On the Home page, tap  icon.
2. Tap **Devices > Lights > Relay Switch > Identify (A)**.



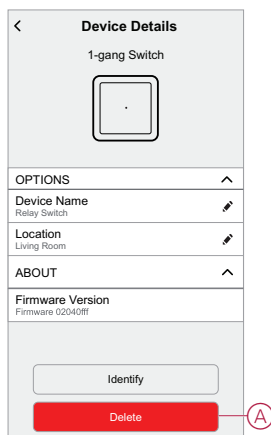
The status LED blinks red and connected devices blinks On/Off, upon successful identification of the relay switch.

3. Tap **OK** to finish identifying the device.

Removing the device from Wisier system

Using the Wisier app, you can remove the relay switch from the system. Follow the steps to remove the device:

1. On the Home page, tap  icon.
2. Tap **Devices > Lights > Relay Switch > Delete (A)**.



NOTE:

- Removing the device will reset the relay switch. After reset the LED turns amber indicating that the relay switch is ready for pairing.
- If there is a problem while pairing or resetting the relay switch, refer to **Resetting the device**, page 10.

Resetting the device

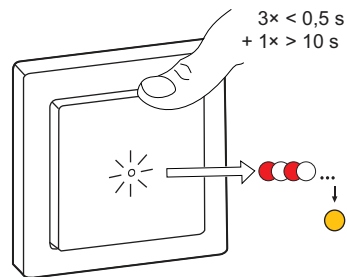
You can reset the device to factory default manually.

Short-press the push button 3 times (<0.5 s) and then long-press the push button once (>10 s).

The LED blinks red after 10 s, and then release the push button.

Upon successful reset, the LED stops blinking. Then, the device restarts and blinks green for a few seconds.

NOTE: After reset, the LED turns amber indicating that it is ready for pairing.

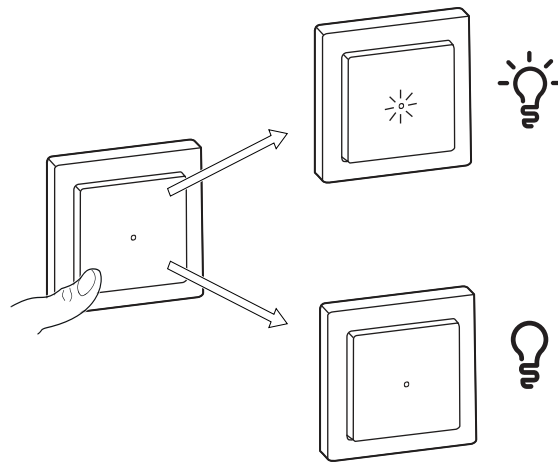


Using the device

Switching On/Off the device manually

You can switch On/Off the device manually. The device will provide power to the electrical appliance connected to it.


Short press the push button on the device once to switch On/Off the relay switch.

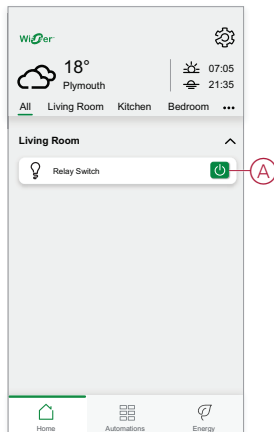


Turning On/Off device using app

Using the Wiser Home app, you can turn On/Off the relay switch remotely.

Follow the steps to turn On/Off the relay switch using the app:



1. Go to the Home page, tap **All** and find the device.
2. Tap  (A) icon to turn On/Off relay switch.

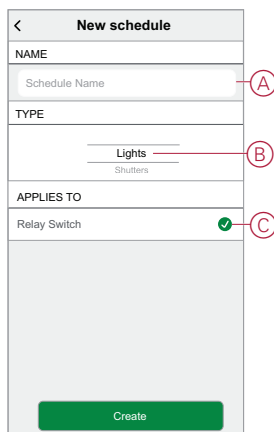



Setting up a schedule

The relay switch can be fully controlled by schedule. Once the schedule is set, the relay switch operates at a given time.

Follow the steps to create a schedule:

1. On the **Home** page, tap  icon.
2. Go to **Schedules** and tap  icon to create a schedule.
3. Enter the name of the schedule (A).
4. In the **TYPE** menu, select **Lights** (B).
5. In the **APPLIES TO** menu, select **Relay Switch** (C) from the listed devices.
6. Tap **Create** to setup events.






7. Tap  icon to add an event such as **STATE** (lights On/Off) and **WHEN** (sunrise/sunset or specific time range).
8. Tap **Set** to save the schedule.

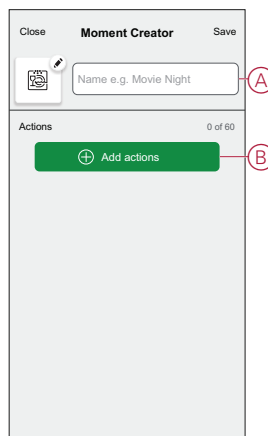
Moments

Moment allows you to group multiple actions that are usually performed together. By using the Wisier Home app, you can create moments based on your needs.

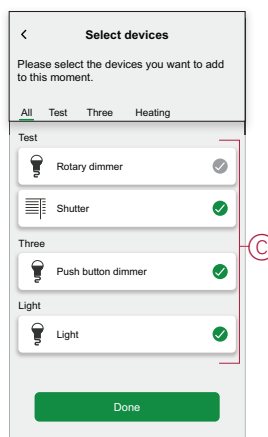
Creating a moment

Follow the steps to create a moment:

1. On the **Home** page, tap  icon.
2. Go to **Moments** and tap  icon to create a moment.
3. Enter the name of the moment (A).
TIP: You can choose the cover image that represents your moment by tapping  icon.
4. Tap **Add actions** (B) to select the list of devices.

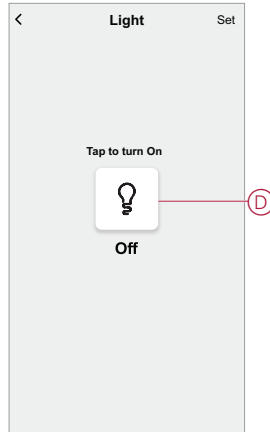


5. In the **Add actions** menu, you can select the devices (C).



6. Once all the device are selected, tap **Done**.



7. On the **Moment creator** page, tap on the device to set the condition:
 - Tap to turn on (D) and tap **Set** on the upper right corner.

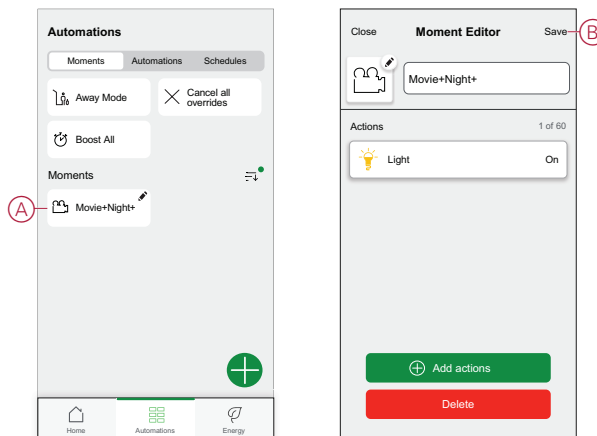


8. Once all conditions are set, tap **Save**.
Once the moment is saved, it is visible on the **Moments** tab. You can tap on the moment to enable it.

Editing a moment



To edit a moment:

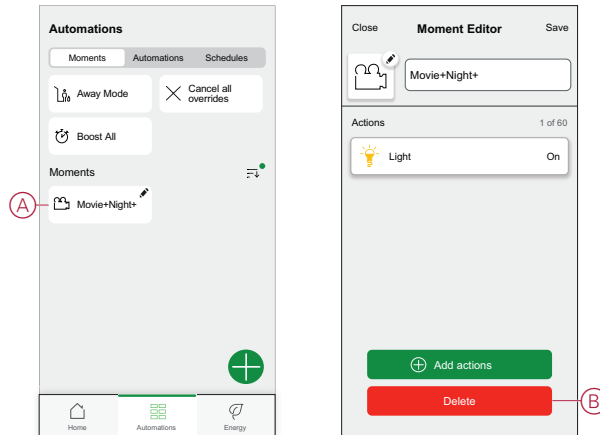
1. On the **Home** page, tap .
2. Go to **Moments**, locate the moment you want to edit and tap  (A).
3. On the **Moment Editor** page, you can tap each item to change the settings and tap **Save** (B).



Deleting a moment

To delete a moment:

1. On the **Home** page, tap .
2. Go to **Moments**, locate the moment you want to delete and tap  (A).
3. On the Moment Editor page, tap **Delete** (B) and tap **Ok**.






Automation

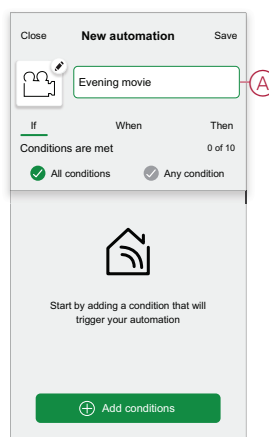
An automation allows you to group multiple actions that are usually done together, triggered automatically or at scheduled times. By using the Wiser app, you can create automations based on your needs. This example demonstrates how a device works when the condition is met.

Creating an automation

Follow the steps to create an automation:

1. On the **Home** page, tap  icon.
2. Go to **Automation** and tap  icon to create an automation.
3. Enter the name of the automation (A).

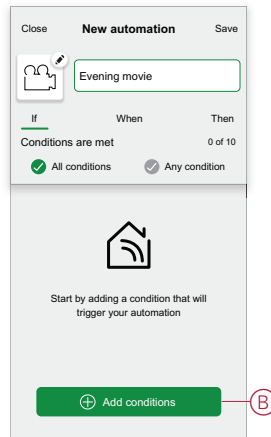
TIP: You can choose the cover image that represents your automation by tapping  icon.



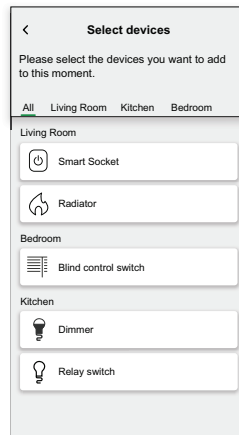
4. Tap **Add a condition (B)**.

NOTE:

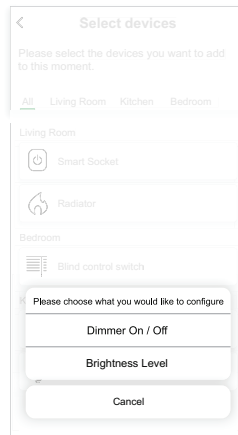
- A Condition will be set to trigger an Automation for example when the shutter is opened, or the motion sensor is detecting the movement.
- You can add one condition to an automation; to add another condition, you must create another automation.




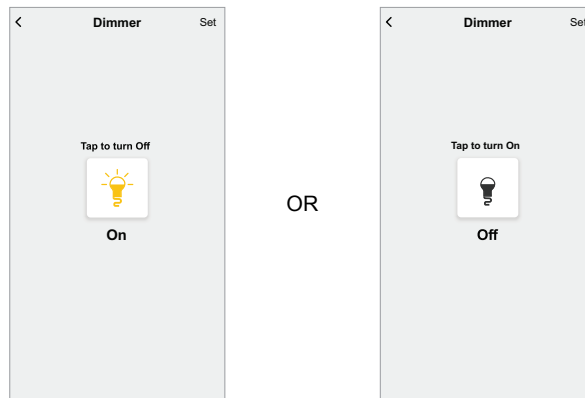
5. Select a device that will set the condition.



- Select the state of the device that will trigger the automation, for example Dimmer On/Off.



When selected **Dimmer On/Off**, set the state by tapping the  icon to turn On/Off the Dimmer.



- Tap **Set** on the upper right corner.

TIP: If you want to change the condition, swipe it to the left and tap the bin icon. Then add a new condition with the required parameters.

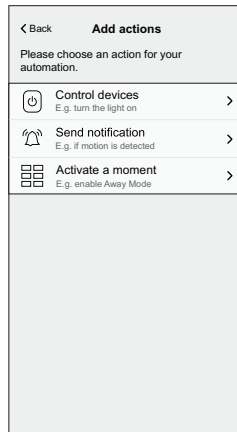
- Tap **Action**> **Add an action**.

NOTE: You can add one action in an automation; to add another action, you must create another automation.

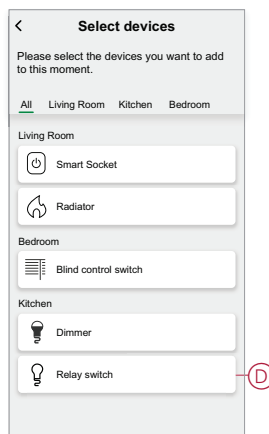
9. Select the type of action:

- **Control a device** - Select the device and set the desired state of the device.
- **Send notification** - You will be notified if the condition is met.
- **Activate a moment** - Select a Moment.

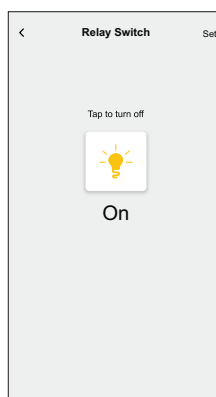
For this example, we will choose **Control a device**.



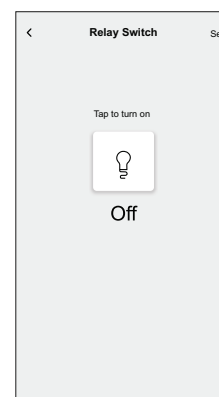
10. Select **Relay switch (D)** as a device that will trigger an action.



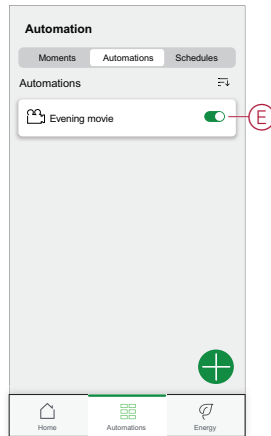
11. Set the state, for example turning On/Off the Relay switch. Then tap **Set** on the upper right corner.



OR




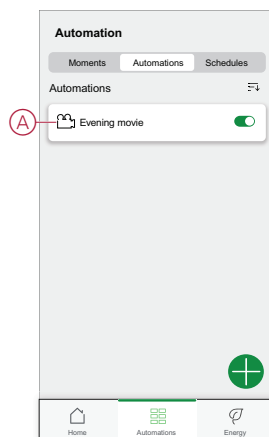
12. Tap **Save**. The saved Automation is displayed on the **Automation** page. Tap the toggle switch (E) on the Automation page to enable/disable the Automation.



Editing an automation

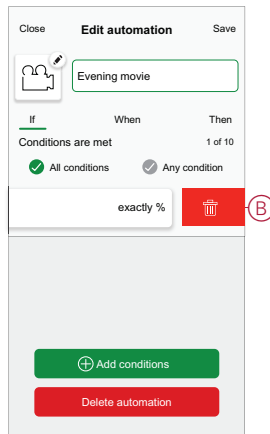
Follow the steps to edit an automation:

1. On the **Home** page, tap  icon.
2. Go to **Automation**, tap the automation you want to edit (A).



3. On the **Edit automation** page, you can:
 - Change the icon.
 - Rename the automation.
 - Change the condition or action.


- Remove the Condition or Action by swiping it to the left and tapping the **bin** icon (B).

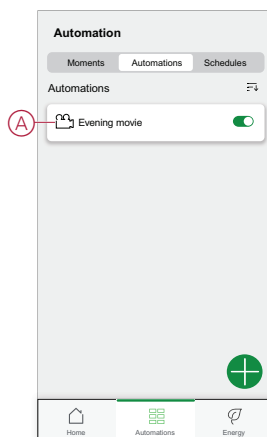


- Add a new condition or action and then tap **Save**.

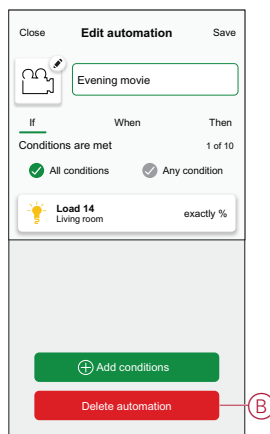
Deleting an automation

Follow the steps to delete an automation:

- On the **Home** page, tap  icon.
- Go to **Automation**, tap the automation you want to delete (A).





- On the Edit automation page, tap **Delete Automation** (B) and tap **Ok**.





LED Indication


Pairing

User Action	LED Indication	Status
Press the push-button 3 times	LED blinks amber per second. 	Pairing mode is active for 30 seconds. When pairing is completed, LED glows green for some time before turning Off. 


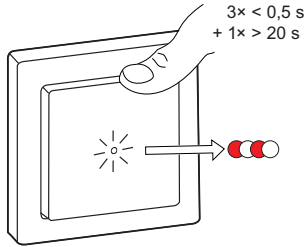
Resetting

User Action	LED Indication	Status
Press the push-button 3 times and hold it down once for > 10 s.	After 10 s, the LED blinks red. 	The relay switch is in reset mode. It is reset to the factory settings after 10 seconds. The relay switch then restarts and the LED blinks green for a few seconds and then stays amber. 







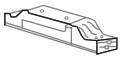

Identifying the device

LED Indication	Status
The LED blinks red. 	The connected devices blinks On/Off, upon successful identification of the relay switch.

Different connectivity mode

LED Indication	Status
The LED blinks green and red while paring. 	The device is trying to connect to other connectivity mode. Short press the push button 3 times and then hold for 20 seconds. When the LED blinks red rapidly, release the push button. 

Technical Data

Nominal voltage	AC 230 V, 50 Hz		
Nominal power	Load type	Load name	Load value
	 LED	LED	200 W
		Motor	1000 VA
		Iron core transformer	500 VA
		Incandescent lamp	2200 W
		Halogen lamp	2000 W
		Fluorescent lamp	200 W
		Electronic step-down converter	1050 VA
		Capacitive load	10 A, 140µF
Standby	Maximum 0.4 W		
Connecting Terminals	Screw terminals for max. 2 x 2.5 mm ² , 0.5 Nm		
Extension unit	Single Push-button, unlimited number, max. 50 m		
Fuse protection	16 A circuit breaker		
Nominal current	10 A, $\cos\phi = 0.6$		
Operating frequency	2405 - 2480 MHz		
Max. radio-frequency power transmitted	< 10 mW		
Communication protocol	Zigbee 3.0 certified		

Compliance

Compliance information for Green Premium products

Find and download comprehensive information about Green Premium products, including RoHS compliance and REACH declarations as well as Product Environmental Profile (PEP) and End-of-Life instructions (EOLI).

General information about Green Premium products

Click the link below to read about Schneider Electric's Green Premium product strategy.

<https://www.schneider-electric.com/en/work/support/green-premium/>

Find compliance information for a Green Premium product

Click the link below to search for a product's compliance information (RoHS, REACH, PEP and EOLI).

NOTE: You will need the product reference number or product range to perform the search.

<https://www.reach.schneider-electric.com/CheckProduct.aspx?cskey=ot7n66yt63o1xblflyfj>

Trademarks

This guide makes reference to system and brand names that are trademarks of their relevant owners.

- Zigbee is a trademark of the Connectivity Standard Alliance™.
- Apple® and App Store® are brand names or registered trademarks of Apple Inc.
- Google Play™ Store and Android™ are brand names or registered trademarks of Google Inc.
- Wi-Fi® is a registered trademark of Wi-Fi Alliance®.
- Wiser™ is a trademark and the property of Schneider Electric, its subsidiaries and affiliated companies.

Other brands and registered trademarks are the property of their respective owners.

Schneider Electric
35 rue Joseph Monier
92500 Rueil Malmaison
France

+ 33 (0) 1 41 29 70 00

www.se.com

As standards, specifications, and design change from time to time,
please ask for confirmation of the information given in this publication.

© 2022 – Schneider Electric. All rights reserved.

DUG_Odace Relay Switch_WH-01