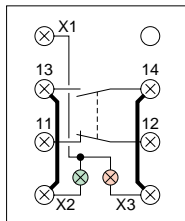
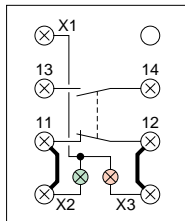


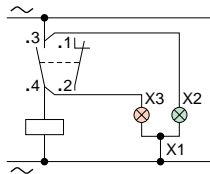
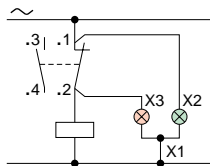
Corps embrochable
Gehäuse steckbar
Plug-in body



Fils internes de l'appareil
 Interne Verdrahtung
 Internal connections

— Connections à réaliser par le client
 Vom Kunden zu verdrahten
 Connections to be made by the user

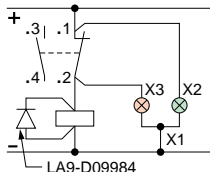
Version Néon
 Ausführung mit Glimmlampen
 Neon versions (AC)



X2 : voyant vert
 grüne Meldeleuchte
 green light

X3 : voyant orange
 orange Meldeleuchte
 orange light

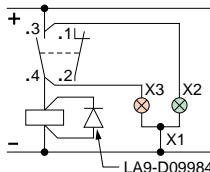
Version DEL / Ausführung mit LED
 LED versions (AC)



Protégé contre les inversions de fils
 Schutz gegen Verpolung
 Incorporating reserve polarity protection

Tenue aux surtensions : < 700V
 Schutz gegen
 Spitzenspannungen : < 700V
 Maximum transient voltage : < 700V

Charges inductives acceptées
 uniquement avec un amortisseur de
 surtension. (LA9-D09984)
 Für induktives Last Spannungsbegrenzer
 LA9-D09984 vorsehen
 Where the load is inductive, please fit a
 suppressor across the load (LA9-D09984)



Corps fixe
Gehäuse nicht steckbar
Fixed body

