

BCPMSCT0, BCPMSCT1, BCPMSCT3 Split-Core Current Transducers for Branch Circuit Power Monitoring Systems

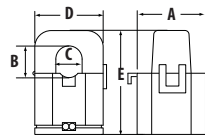


INTRODUCTION

The BCPMSCT0, BCPMSCT1, and BCPMSCT3 (50 A, 100 A and 200 A, respectively) split-core CTs are designed to work with the BCPMSC series panelboard monitoring systems. CTs are available in packs of 6. **Install BCPMSCT0 on 300 VAC maximum, 50/60 Hz. Install BCPMSCT1 and BCPMSCT3 on 300 VAC maximum, 50/60 Hz (CE) or 600 VAC maximum, 50/60 Hz (UL).**

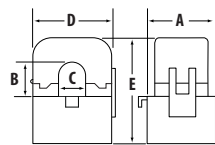
DIMENSIONS

Figure 1 CT Dimensions



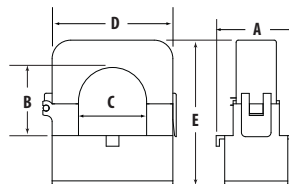
BCPMSCT0 50 A

- A = 1.0" (26 mm)
- B = 0.5" (11 mm)
- C = 0.4" (10 mm)
- D = 0.9" (23 mm)
- E = 1.6" (40 mm)



BCPMSCT1 100 A

- A = 1.5" (37 mm)
- B = 0.6" (16 mm)
- C = 0.6" (16 mm)
- D = 1.85" (47 mm)
- E = 2.1" (53 mm)



BCPMSCT3 200 A

- A = 1.5" (39 mm)
- B = 1.25" (32 mm)
- C = 1.25" (32 mm)
- D = 2.5" (64 mm)
- E = 2.8" (71 mm)

INSTALLATION

⚠ DANGER ⚡

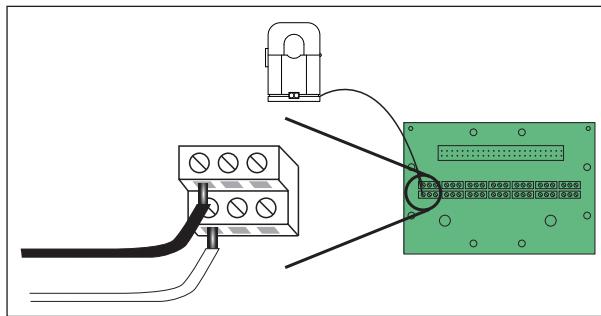
HAZARD OF ELECTRICAL SHOCK, EXPLOSION, OR ARC FLASH

- Apply appropriate personal protective equipment (PPE) and follow safe electrical work practices. See NFPA 70E in the USA or applicable local codes.
- This equipment must only be installed and serviced by qualified electrical personnel.
- Turn off all power supplying equipment before working on or inside the equipment.
- Always use a properly rated voltage sensing device to confirm power is off.
- Read, understand, and follow the instructions before installing this product.
- Install device in an appropriate electrical and fire enclosure per local regulations.
- ESD Sensitive equipment. Ground yourself and discharge any static charge before handling this device.

Failure to follow these instructions will result in death or serious injury.

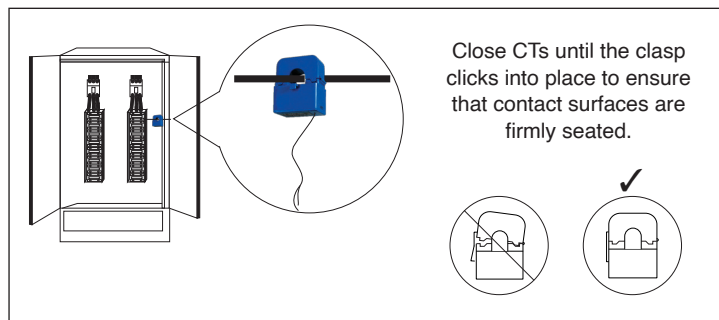
1. Disconnect power to the electrical panel and lock it out. Use a properly rated voltage sensing device to confirm power is off.
2. Locate the tiered terminal blocks on the board. Connect the CT wires to the terminal blocks as shown. When tightening terminals, apply the correct torque: 0.16 to 0.19 ft·lb (0.22 to 0.26 N·m) for the connectors on the adapter board terminal blocks.

Figure 2 Wire CT to terminal blocks



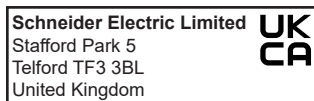
3. Install the current sensors onto the conductors to be monitored. Sensors can be mounted facing either direction; orientation does not affect meter accuracy. Clean split-core contacts before closing. **Install BCPMSCT0 on 300 VAC maximum, 50/60 Hz. Install BCPMSCT1 and BCPMSCT3 on 300 VAC maximum, 50/60 Hz (CE) or 600 VAC maximum, 50/60 Hz (UL).**

Figure 3 Install CT on the conductor



CHINA ROHS COMPLIANCE INFORMATION (EFUP TABLE)

部件名称	产品中有毒有害物质或元素的名称及含量Substances					
	铅 (Pb)	汞 (Hg)	镉 (Cd)	六价铬 (Cr(VI))	多溴联苯 (PBB)	多溴二苯醚 (PBDE)
塑料部件	0	0	0	0	X	X
0 = 表示该有毒有害物质在该部件所有均质材料中的含量均在 SJ/T11363-2006 标准规定的限量要求以下。 X = 表示该有毒有害物质至少在该部件的某一均质材料中的含量超出SJ/T11363-2006标准规定的限量要求。						
Z000215-0A						



Schneider Electric
35, rue Joseph Monier
92500 Rueil Malmaison
France
+ 33 (0) 1 41 29 70 00

Contact your local Schneider Electric sales representative for assistance or go to www.se.com

ION, Modbus, and PowerLogic are either trademarks or registered trademarks of Schneider Electric in France, the USA and other countries. Other trademarks used are the property of their respective owners.
Electrical equipment should be installed, operated, serviced, and maintained only by qualified personnel. No responsibility is assumed by Schneider Electric for any consequences arising out of the use of this material.
Z206257-0C 12/2021
© 2021 Schneider Electric. All Rights Reserved.