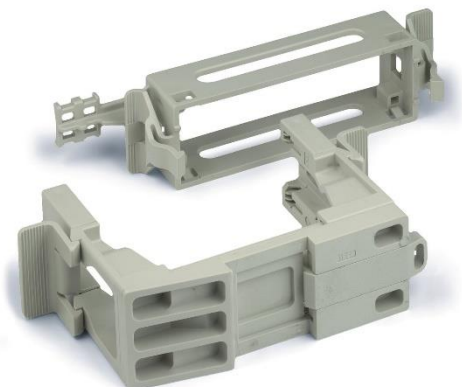


10027000	DATA SHEET	
Valid from: 30.04.2025	EPIC® H-B 6-24 Q+E MOUNTING SYSTEM	

Description

- For mounting inserts on top-hat rails according to DIN EN 60715



General Characteristics

Configuration	Top part + Bottom part
Series	See table
Temperature Range	-40°C to +100°C, short-term up to +125°C

Mechanical Characteristics

Cycle of mechanical operation	max. 50
-------------------------------	---------

Materials and Surfaces

Material	Polycarbonate
Flammability Class according to UL 94	V0

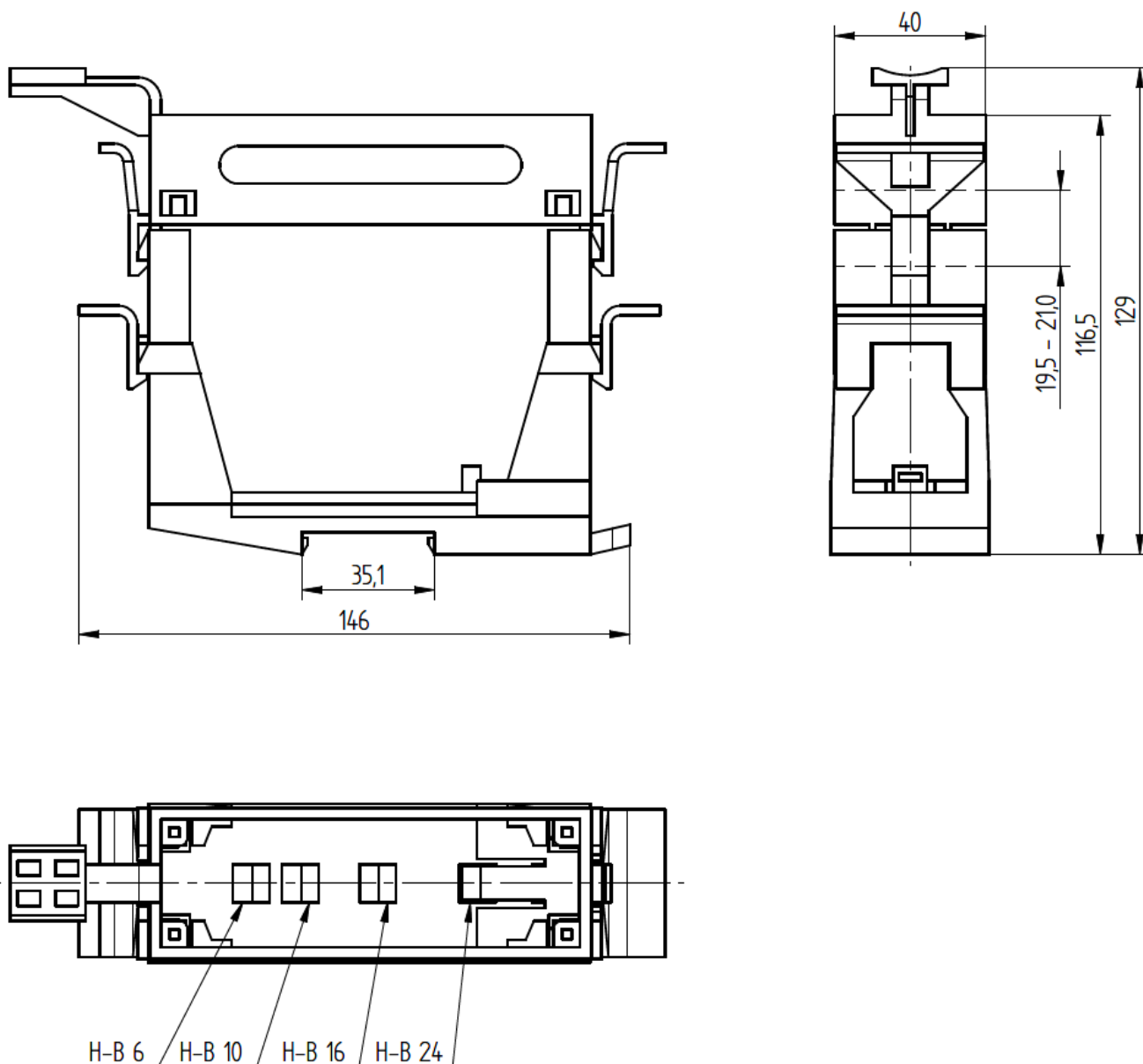
Versions

Article number	Article description	Series
10027000	EPIC® H-B 6 Q+E MOUNTING SYSTEM	H-B 6
10027100	EPIC® H-B 10 Q+E MOUNTING SYSTEM	H-B 10
10027200	EPIC® H-B 16 Q+E MOUNTING SYSTEM	H-B 16
10027300	EPIC® H-B 24 Q+E MOUNTING SYSTEM	H-B 24

Creator: TODV1/BU EPIC Released: MAJU2/ BU EPIC	Document: DB10027000EN Version: 00	Page 1 of 2
----------------------------------------------------	---------------------------------------	-------------

10027000	DATA SHEET	
Valid from: 30.04.2025	EPIC® H-B 6-24 Q+E MOUNTING SYSTEM	

Technical Drawings



Remark

Photographs are not to scale and do not represent detailed images of the respective products.

Creator: TODV1/BU EPIC Released: MAJU2/ BU EPIC	Document: DB10027000EN Version: 00	Page 2 of 2
----------------------------------------------------	---------------------------------------	-------------