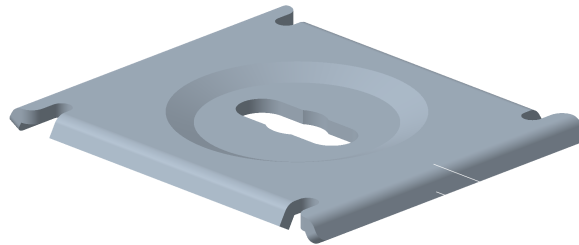


CE40

Reference(s) : 558 051/53/54/56/58


1. GAMME / RANGE

Designation	Code	Poids / Weight (Kg) (lb)		Epaisseur / Thickness (mm) (inch)		Matière / Material	Norme / Standard	Finition / Coating	Classe de résistance contre la corrosion/ Resistance class against corrosion
CE40 GS	558 051	0.044	0.097	2	0.08"	S220GD Z275	EN 10 346	GS	Class 3 / IEC 61537
CE40 ZnL	558 053					S235 JR	EN 10 025	ZnL	Class 6 / IEC 61537
CE40 304L	558 058	0.045	0.099			X2 Cr Ni 18-9	EN 10 088-2	IN304L / SS304L	Class 9C / IEC 61537
CE40 316L	558 054					X2 Cr Ni Mo 17-12-2	EN 10 088-2	IN316L / SS316L	Class 9D / IEC 61537
CE40 ZnMg	558 056	0.044	0.097			S220 GD ZM	EN 10 346	ZnMg	Class 8 / IEC 61537

2. DIMENSIONS (mm/inch)
