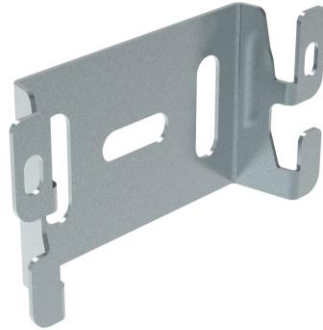


CM 50

Reference(s) : 586 060/063/064/068



1 RANGE

Designation	Code	Epaisseur Thickness (mm/Inch)	Masse Weight (KG)	Matière Raw material	Norme Standard	Finition Coating	Classe de résistance contre la corrosion / Resistance class against corrosion
CM 50 GS	586 060	1,2/0,05"	0,046	DX 51 D Z275 MAC	EN 10346	GS / PG	class 3 / CEI 61537
CM 50 ZnMg	586 063	1,2/0,05"	0,046	DX 51 D ZM	EN 10346	ZnMg	class 8 / CEI 61537
CM 50 316L	586 064	1,2/0,05"	0,046	X2 Cr Ni Mo 17-12-2	EN 10088-2	IN316L / SS316L	class 9D / CEI 61537
CM 50 304L	586 068	1,2/0,05"	0,046	X2 Cr Ni Mo 18-9	EN 10088-2	IN304L / SS304L	class 9C / CEI 61537

Dimensions in (mm/inch) :

