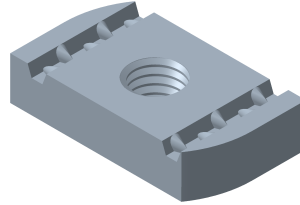
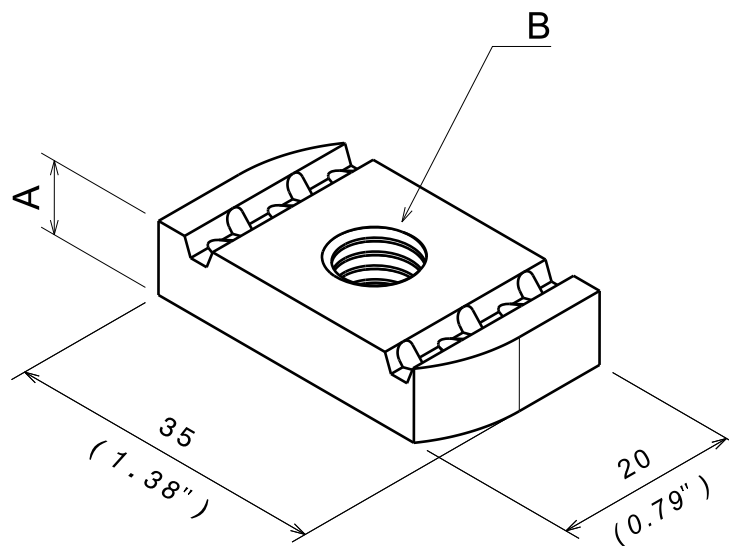


**ECROU 41
41 NUT**

 Reference(s) : 801 801/804/807//811/814/817/821
/824/831/834
350 448/449/450/451

1. GAMME / RANGE

Designation	Code	Poids / Weight		A		B	Matière / Material	Norme / Standard	Finition / Coating	Classe de résistance contre la corrosion / Resistance class against corrosion
		(Kg)	(lb)	(mm)	(inch)					
E41 M6 EZ	801 801	0.027	0.060	6	0.236	M6	S235 JR	EN 10025	EZ	Class 3 / IEC 61537
E41 M6 ZnL	801 807								ZnL	Class 6 / IEC 61537
E41 M6 316L	801 804						X2 Cr Ni Mo 17-12-2	EN 10 088-2	IN316L / SS316L	Class 9D / IEC 61537
E41 M6 ZnNi	350 448						S235 JR	EN 10025	ZnNi	Class 8 / IEC 61537
E41 M8 EZ	801 811	0.026	0.057	6	0.236	M8	S235 JR	EN 10025	EZ	Class 3 / IEC 61537
E41 M8 ZnL	801 817								ZnL	Class 6 / IEC 61537
E41 M8 316L	801 814						X2 Cr Ni Mo 17-12-2	EN 10 088-2	IN316L / SS316L	Class 9D / IEC 61537
E41 M8 ZnNi	350 449						S235 JR	EN 10025	ZnNi	Class 8 / IEC 61537
E41 M10 EZ	801 821	0.038	0.084	8	0.315	M10	S235 JR	EN 10025	EZ	Class 3 / IEC 61537
E41 M10 316L	801 824						X2 Cr Ni Mo 17-12-2	EN 10 088-2	IN316L / SS316L	Class 9D / IEC 61537
E41 M10 ZnNi	350 450						S235 JR	EN 10025	ZnNi	Class 8 / IEC 61537
E41 M12 EZ	801 831	0.038	0.084	9.5	0.374	M12	S235 JR	EN 10025	EZ	Class 3 / IEC 61537
E41 M12 316L	801 834						X2 Cr Ni Mo 17-12-2	EN 10 088-2	IN316L / SS316L	Class 9D / IEC 61537
E41 M12 ZnNi	350 451						S235 JR	EN 10025	ZnNi	Class 8 / IEC 61537

2. DIMENSIONS (mm/inch)

3. INSTALLATION

Compatible avec R21 et R41 / Compatible with R21 and R41