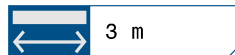
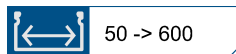
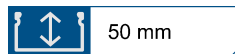
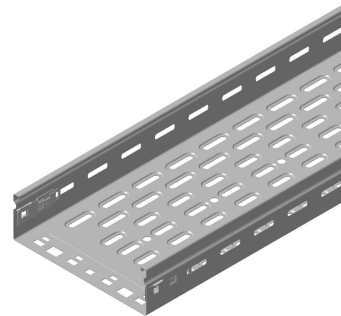


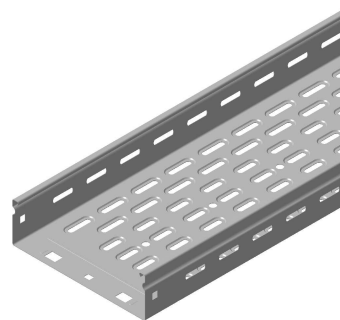
P31 - CHEMIN DE CÂBLES
P31 - CABLE TRAYS



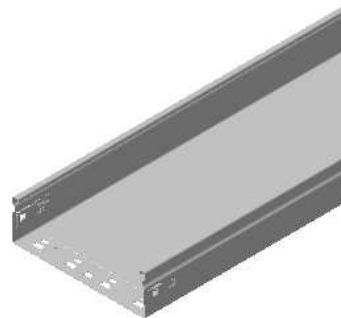
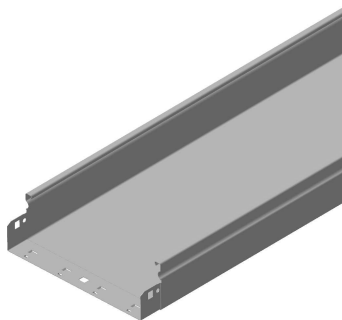
CHEMIN DE CÂBLES TÔLE PERFORÉE MÂLE FEMELLE AUTOMATIQUE
PERFORATED CABLE TRAYS MALE FEMALE AUTOMATIC



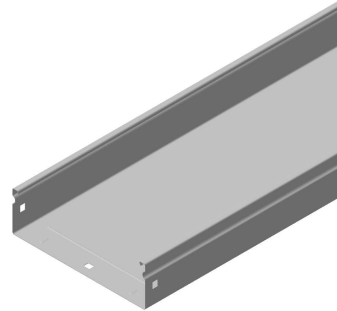
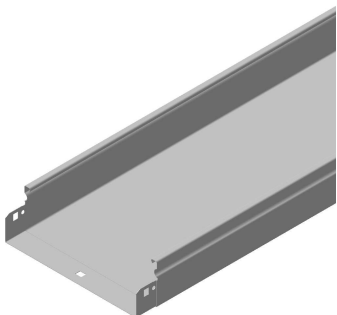
CHEMIN DE CÂBLES TÔLE PERFORÉE MÂLE FEMELLE À VISSER
PERFORATED CABLE TRAYS MALE FEMALE TO SCREW



CHEMIN DE CÂBLES TÔLE NON PERFORÉE MÂLE FEMELLE AUTOMATIQUE
BLIND CABLE TRAYS MALE FEMALE AUTOMATIC



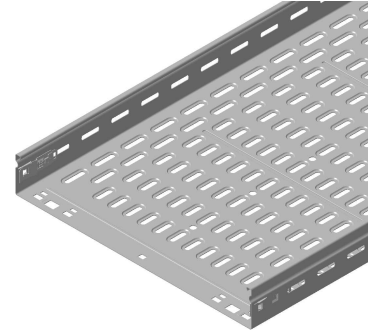
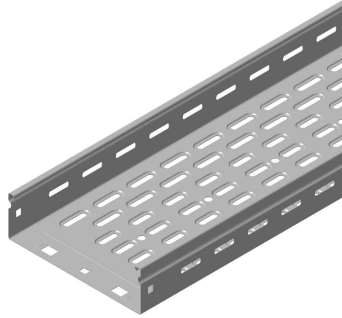
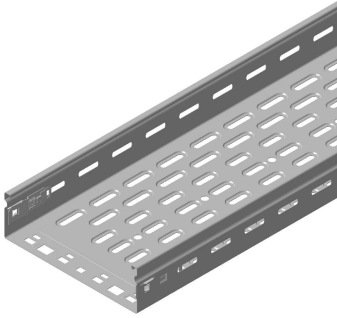
CHEMIN DE CÂBLES TÔLE NON PERFORÉE MÂLE FEMELLE À VISSER
BLIND CABLE TRAYS MALE FEMALE TO SCREW



P31 - CHEMIN DE CÂBLES
P31 - CABLE TRAYS

Référence(s): **481175/00/50** **482052/53/54/57/58/59**
 Item(s): **481201/1300/1400/1500** **482852/482155/482156**
481600/487849/51/63/65 **488253/54/55/56/57/58/59/60/61**
480052/53/54/57/58/59 **486253/54/55/56/57/58/59/60/61**
480852/480155/480156 **485330/31/32/33/34/35/36/37/38**

1. GAMME/RANGE
GS, GC / PG, HDG



<->
50/75
Plat
Flat

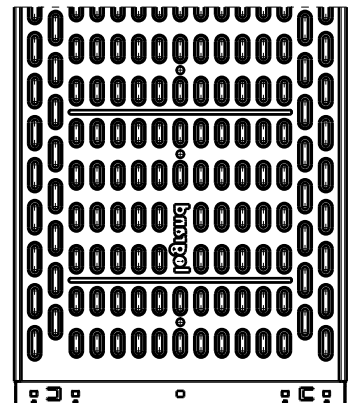
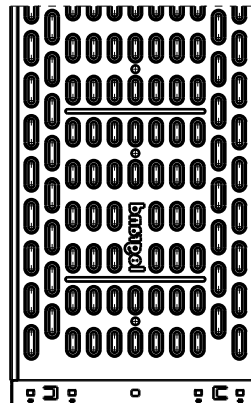
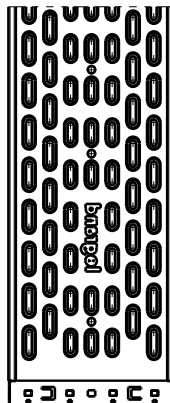
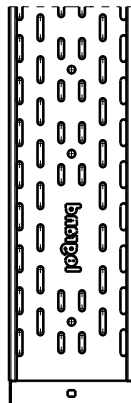
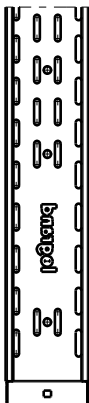
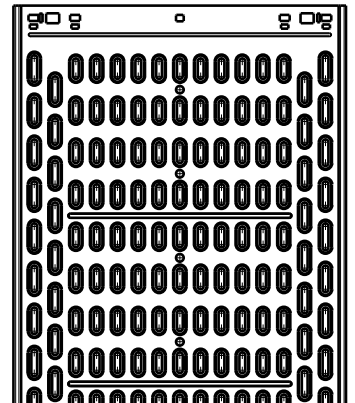
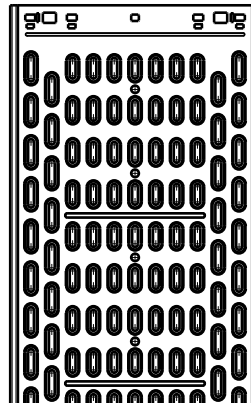
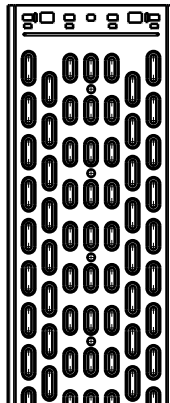
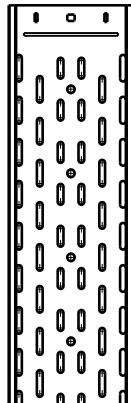
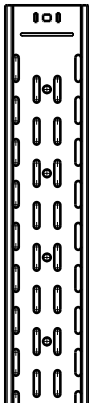
<->
100
Plat
Flat

<->
150
Plat
Flat

<->
200
Embouti
Embossing

<->
300/400
Embouti
Embossing

<->
500/600
Embouti
Embossing



P31 - CHEMIN DE CÂBLES
P31 - CABLE TRAYS

 Référence(s): **481175/00/50** **482052/53/54/57/58/59**
 Item(s): **481201/1300/1400/1500** **482852/482155/482156**
 481600/487849/51/63/65 **488253/54/55/56/57/58/59/60/61**
 480052/53/54/57/58/59 **486253/54/55/56/57/58/59/60/61**
 480852/480155/480156 **485330/31/32/33/34/35/36/37/38**
CHEMIN DE CÂBLES TÔLE PERFORÉE MÂLE FEMELLE AUTOMATIQUE GS 3M (3000mm + 30mm)
PERFORATED CABLE TRAYS MALE FEMALE AUTOMATIC PG 3M (3000mm + 30mm)

Designation Description	Code	Poids Weight (Kg)	Épaisseur Thickness (mm)	Matière Raw Material	Norme matière Standard Raw Material	Finition Coating	Norme Finition Standard Coating	Section (mm ²)
P31-DALLE PLAT 3M M/F 50X75 AUT GS P31-TRAY PERF FLAT 3M M/F 50X75 AUT PG	481175	2,54	0,6	DX51D + Z200	EN 10346	GS/PG/Z	EN 10346	3699
P31-DALLE PLAT 3M M/F 50X100 AUT GS P31-TRAY PERF FLAT 3M M/F 50X100 AUT PG	481100	2,86	0,6	DX51D + Z200	EN 10346	GS/PG/Z	EN 10346	4821
P31-DALLE PLAT 3M M/F 50X150 AUT GS P31-TRAY PERF FLAT 3M M/F 50X150 AUT PG	481150	3,49	0,6	DX51D + Z200	EN 10346	GS/PG/Z	EN 10346	7261
P31-DALLE EMB 3M M/F 50X200 AUT GS P31-TRAY PERF EMB 3M M/F 50X200 AUT PG	481201	4,15	0,6	DX51D + Z200	EN 10346	GS/PG/Z	EN 10346	9701
P31-DALLE EMB 3M M/F 50X300 AUT GS P31-TRAY PERF EMB 3M M/F 50X300 AUT PG	481300	6,75	0,75	DX51D + Z200	EN 10346	GS/PG/Z	EN 10346	14581
P31-DALLE EMB 3M M/F 50X400 AUT GS P31-TRAY PERF EMB 3M M/F 50X400 AUT PG	481400	9,89	0,9	DX51D + Z200	EN 10346	GS/PG/Z	EN 10346	19193
P31-DALLE EMB 3M M/F 50X500 AUT GS P31-TRAY PERF EMB 3M M/F 50X500 AUT PG	481500	11,76	0,9	DX51D + Z200	EN 10346	GS/PG/Z	EN 10346	24013
P31-DALLE EMB 3M M/F 50X600 AUT GS P31-TRAY PERF EMB 3M M/F 50X600 AUT PG	481600	13,63	0,9	DX51D + Z200	EN 10346	GS/PG/Z	EN 10346	28833

 Classe de résistance contre la corrosion 3 (IEC 61537)
 Corrosion resistance classification 3 (IEC 61537)

CHEMIN DE CÂBLES TÔLE PERFORÉE MÂLE FEMELLE À VISSER GS 3M (3000mm + 30mm)
PERFORATED CABLE TRAYS MALE FEMALE TO SCREW PG 3M (3000mm + 30mm)

Designation Description	Code	Poids Weight (Kg)	Épaisseur Thickness (mm)	Matière Raw Material	Norme matière Standard Raw Material	Finition Coating	Norme Finition Standard Coating	Section (mm ²)
P31-DALLE PLAT 3M M/F 50X50 GS P31-TRAY PERF FLAT 3M M/F 50X50 PG	480052	2,26	0,6	DX51D + Z200	EN 10346	GS/PG/Z	EN 10346	2381
P31-DALLE PLAT 3M M/F 50X75 GS P31-TRAY PERF FLAT 3M M/F 50X75 PG	480852	2,54	0,6	DX51D + Z200	EN 10346	GS/PG/Z	EN 10346	3699
P31-DALLE PLAT 3M M/F 50X100 GS P31-TRAY PERF FLAT 3M M/F 50X100 PG	480053	2,87	0,6	DX51D + Z200	EN 10346	GS/PG/Z	EN 10346	4821
P31-DALLE PLAT 3M M/F 50X150 GS P31-TRAY PERF FLAT 3M M/F 50X150 PG	480054	3,49	0,6	DX51D + Z200	EN 10346	GS/PG/Z	EN 10346	7261
P31-DALLE EMB 3M M/F 50X200 GS P31-TRAY PERF EMB 3M M/F 50X200 PG	480155	4,16	0,6	DX51D + Z200	EN 10346	GS/PG/Z	EN 10346	9701
P31-DALLE EMB 3M M/F 50X300 GS P31-TRAY PERF EMB 3M M/F 50X300 PG	480156	6,76	0,75	DX51D + Z200	EN 10346	GS/PG/Z	EN 10346	14581
P31-DALLE EMB 3M M/F 50X400 GS P31-TRAY PERF EMB 3M M/F 50X400 PG	480057	9,89	0,9	DX51D + Z200	EN 10346	GS/PG/Z	EN 10346	19193
P31-DALLE EMB 3M M/F 50X500 GS P31-TRAY PERF EMB 3M M/F 50X500 PG	480058	11,76	0,9	DX51D + Z200	EN 10346	GS/PG/Z	EN 10346	24013
P31-DALLE EMB 3M M/F 50X600 GS P31-TRAY PERF EMB 3M M/F 50X600 PG	480059	13,64	0,9	DX51D + Z200	EN 10346	GS/PG/Z	EN 10346	28833

 Classe de résistance contre la corrosion 3 (IEC 61537)
 Corrosion resistance classification 3 (IEC 61537)

P31 - CHEMIN DE CÂBLES
P31 - CABLE TRAYS

 Référence(s): **481175/00/50** **482052/53/54/57/58/59**
 Item(s): **481201/1300/1400/1500** **482852/482155/482156**
 481600/487849/51/63/65 **488253/54/55/56/57/58/59/60/61**
 480052/53/54/57/58/59 **486253/54/55/56/57/58/59/60/61**
 480852/480155/480156 **485330/31/32/33/34/35/36/37/38**
CHEMIN DE CÂBLES TÔLE PERFORÉE MÂLE FEMELLE À VISSER RAL 3M (3000mm + 30mm)
PERFORATED CABLE TRAYS MALE FEMALE TO SCREW RAL 3M (3000mm + 30mm)

Designation Description	Code	Poids Weight (Kg)	Épaisseur Thickness (mm)	Matière Raw Material	Norme matière Standard Raw Material	Finition Coating	Norme Finition Standard Coating	Section (mm ²)
P31-DALLE PLAT 3M M/F 50X100 RAL9005 P31-TRAY PERF FLAT 3M M/F 50X100 RAL9005	487849	2,80	0,6	DX51D+Z200	EN 10346	RAL9005	-	4821
P31-DALLE PLAT 3M M/F 50X300 RAL9005 P31-TRAY PERF FLAT 3M M/F 50X300 RAL9005	487851	8,08	0,9	DX51D+Z200	EN 10346	RAL9005	-	14581
P31-DALLE PLAT 3M M/F 50X100 RAL9016 P31-TRAY PERF FLAT 3M M/F 50X100 RAL9016	487863	2,80	0,6	DX51D+Z200	EN 10346	RAL9016	-	4821
P31-DALLE PLAT 3M M/F 50X300 RAL9016 P31-TRAY PERF FLAT 3M M/F 50X300 RAL9016	487865	8,08	0,9	DX51D+Z200	EN 10346	RAL9016	-	14581

 Classe de résistance contre la corrosion 3 (IEC 61537)
 Corrosion resistance classification 3 (IEC 61537)

CHEMIN DE CÂBLES TÔLE PERFORÉE MÂLE FEMELLE À VISSER GC 3M (3000mm + 30mm)
PERFORATED CABLE TRAYS MALE FEMALE TO SCREW HDG 3M (3000mm + 30mm)

Designation Description	Code	Poids Weight (Kg)	Épaisseur Thickness (mm)	Matière Raw Material	Norme matière Standard Raw Material	Finition Coating	Norme Finition Standard Coating	Section (mm ²)
P31-DALLE PLAT 3M M/F 50X50 GC P31-TRAY PERF FLAT 3M M/F 50X50 HDG	482052	2,49	0,6	DC 01	EN 10130	GC/HDG/C	ISO 1461	2381
P31-DALLE PLAT 3M M/F 50X75 GC P31-TRAY PERF FLAT 3M M/F 50X75 HDG	482852	2,79	0,6	DC 01	EN 10130	GC/HDG/C	ISO 1461	3699
P31-DALLE PLAT 3M M/F 50X100 GC P31-TRAY PERF FLAT 3M M/F 50X100 HDG	482053	3,15	0,6	DC 01	EN 10130	GC/HDG/C	ISO 1461	4821
P31-DALLE PLAT 3M M/F 50X150 GC P31-TRAY PERF FLAT 3M M/F 50X150 HDG	482054	3,84	0,6	DC 01	EN 10130	GC/HDG/C	ISO 1461	7261
P31-DALLE EMB 3M M/F 50X200 GC P31-TRAY PERF EMB 3M M/F 50X200 HDG	482155	4,57	0,6	DC 01	EN 10130	GC/HDG/C	ISO 1461	9701
P31-DALLE EMB 3M M/F 50X300 GC P31-TRAY PERF EMB 3M M/F 50X300 HDG	482156	7,44	0,75	DC 01	EN 10130	GC/HDG/C	ISO 1461	14581
P31-DALLE EMB 3M M/F 50X400 GC P31-TRAY PERF EMB 3M M/F 50X400 HDG	482057	10,88	0,9	DC 01	EN 10130	GC/HDG/C	ISO 1461	19193
P31-DALLE EMB 3M M/F 50X500 GC P31-TRAY PERF EMB 3M M/F 50X500 HDG	482058	12,94	0,9	DC 01	EN 10130	GC/HDG/C	ISO 1461	24013
P31-DALLE EMB 3M M/F 50X600 GC P31-TRAY PERF EMB 3M M/F 50X600 HDG	482059	15,00	0,9	DC 01	EN 10130	GC/HDG/C	ISO 1461	28833

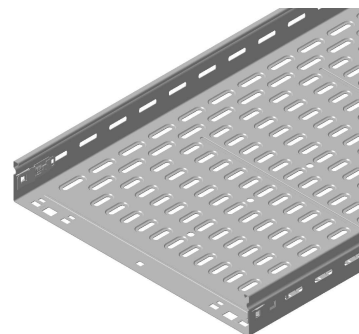
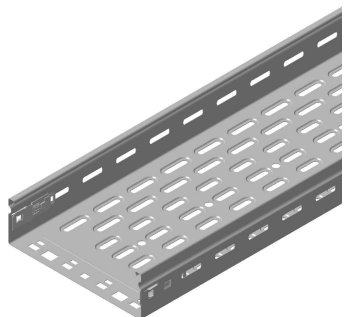
 Classe de résistance contre la corrosion 6 (IEC 61537)
 Corrosion resistance classification 6 (IEC 61537)

P31 - CHEMIN DE CÂBLES
P31 - CABLE TRAYS

Référence(s): **481175/00/50** **482052/53/54/57/58/59**
 Item(s): **481201/1300/1400/1500** **482852/482155/482156**
481600/487849/51/63/65 **488253/54/55/56/57/58/59/60/61**
480052/53/54/57/58/59 **486253/54/55/56/57/58/59/60/61**
480852/480155/480156 **485330/31/32/33/34/35/36/37/38**

1. GAMME/RANGE

Zinc-Magnésium / Zn-Mg



<->
50/75
Plat
Flat

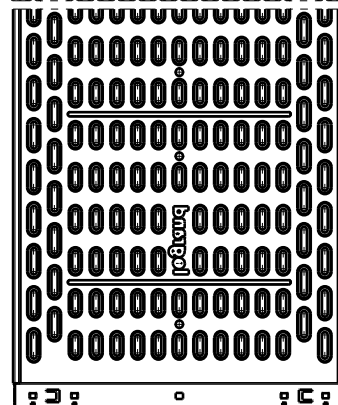
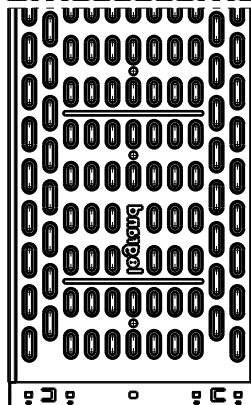
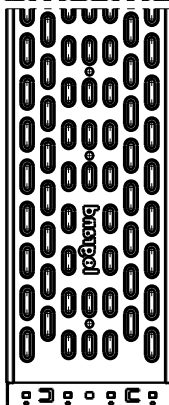
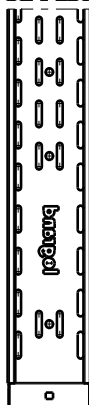
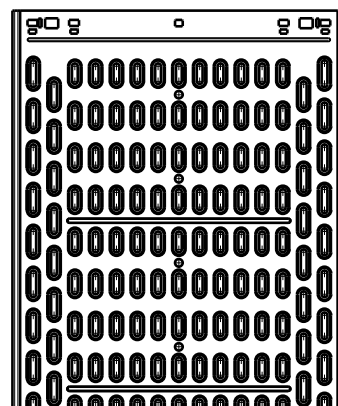
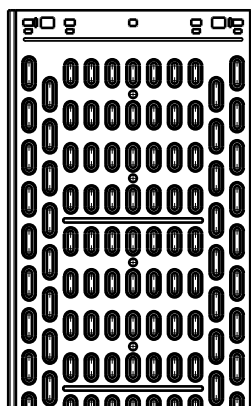
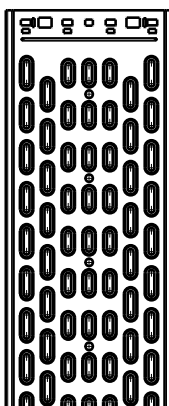
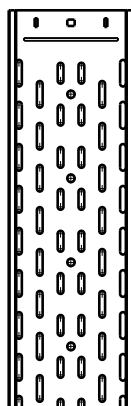
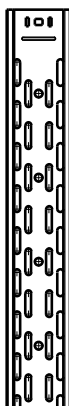
<->
100
Plat
Flat

<->
150
Plat
Flat

<->
200
Embouti
Embossing

<->
300/400
Embouti
Embossing

<->
500/600
Embouti
Embossing



P31 - CHEMIN DE CÂBLES
P31 - CABLE TRAYS

 Référence(s): **481175/00/50** **482052/53/54/57/58/59**
 Item(s): **481201/1300/1400/1500** **482852/482155/482156**
481600/487849/51/63/65 **488253/54/55/56/57/58/59/60/61**
480052/53/54/57/58/59 **486253/54/55/56/57/58/59/60/61**
480852/480155/480156 **485330/31/32/33/34/35/36/37/38**
CHEMIN DE CÂBLES TÔLE PERFORÉE MÂLE FEMELLE À VISSER Zn-Mg 3M (3000mm + 30mm)
PERFORATED CABLE TRAYS MALE FEMALE TO SCREW Zn-Mg 3M (3000mm + 30mm)

Designation Description	Code	Poids Weight (Kg)	Épaisseur Thickness (mm)	Matière Raw Material	Norme matière Standard Raw Material	Finition Coating	Norme Finition Standard Coating	Section (mm ²)
P31-DALLE PLAT 3M M/F 50X50 ZM P31-TRAY PERF FLAT 3M M/F 50X50 ZM	485330	2,26	0,6	DX51D +ZM310 A-C	EN 10346	Zn-Mg	EN 10346	2381

 Classe de résistance contre la corrosion 8 (IEC 61537)
 Corrosion resistance classification 8 (IEC 61537)

CHEMIN DE CÂBLES TÔLE PERFORÉE MÂLE FEMELLE AUTOMATIQUE Zn-Mg 3M (3000mm + 30mm)
PERFORATED CABLE TRAYS MALE FEMALE AUTOMATIC Zn-Mg 3M (3000mm + 30mm)

Designation Description	Code	Poids Weight (Kg)	Épaisseur Thickness (mm)	Matière Raw Material	Norme matière Standard Raw Material	Finition Coating	Norme Finition Standard Coating	Section (mm ²)
P31-DALLE PLAT 3M M/F 50X75 AUT ZM P31-TRAY PERF FLAT 3M M/F 50X75 AUT ZM	485331	2,54	0,6	DX51D +ZM310 A-C	EN 10346	Zn-Mg	EN 10346	3699
P31-DALLE PLAT 3M M/F 50X100 AUT ZM P31-TRAY PERF FLAT 3M M/F 50X100 AUT ZM	485332	2,87	0,6	DX51D +ZM310 A-C	EN 10346	Zn-Mg	EN 10346	4821
P31-DALLE PLAT 3M M/F 50X150 AUT ZM P31-TRAY PERF FLAT 3M M/F 50X150 AUT ZM	485333	3,49	0,6	DX51D +ZM310 A-C	EN 10346	Zn-Mg	EN 10346	7261
P31-DALLE EMB 3M M/F 50X200 AUT ZM P31-TRAY PERF EMB 3M M/F 50X200 AUT ZM	485334	4,16	0,6	DX51D +ZM310 A-C	EN 10346	Zn-Mg	EN 10346	9701
P31-DALLE EMB 3M M/F 50X300 AUT ZM P31-TRAY PERF EMB 3M M/F 50X300 AUT ZM	485335	6,76	0,8	DX51D +ZM310 A-C	EN 10346	Zn-Mg	EN 10346	14581
P31-DALLE EMB 3M M/F 50X400 AUT ZM P31-TRAY PERF EMB 3M M/F 50X400 AUT ZM	485336	9,89	1,0	DX51D +ZM310 A-C	EN 10346	Zn-Mg	EN 10346	19193
P31-DALLE EMB 3M M/F 50X500 AUT ZM P31-TRAY PERF EMB 3M M/F 50X500 AUT ZM	485337	11,76	1,0	DX51D +ZM310 A-C	EN 10346	Zn-Mg	EN 10346	21013
P31-DALLE EMB 3M M/F 50X600 AUT ZM P31-TRAY PERF EMB 3M M/F 50X600 AUT ZM	485338	13,61	1,0	DX51D +ZM310 A-C	EN 10346	Zn-Mg	EN 10346	28833

 Classe de résistance contre la corrosion 8 (IEC 61537)
 Corrosion resistance classification 8 (IEC 61537)

P31 - CHEMIN DE CÂBLES
P31 - CABLE TRAYS

Référence(s): **481175/00/50** **482052/53/54/57/58/59**
 Item(s): **481201/1300/1400/1500** **482852/482155/482156**
481600/487849/51/63/65 **488253/54/55/56/57/58/59/60/61**
480052/53/54/57/58/59 **486253/54/55/56/57/58/59/60/61**
480852/480155/480156 **485330/31/32/33/34/35/36/37/38**

1. GAMME/RANGE
Inox/Stainless steel



<->
50/75
Plat
Flat

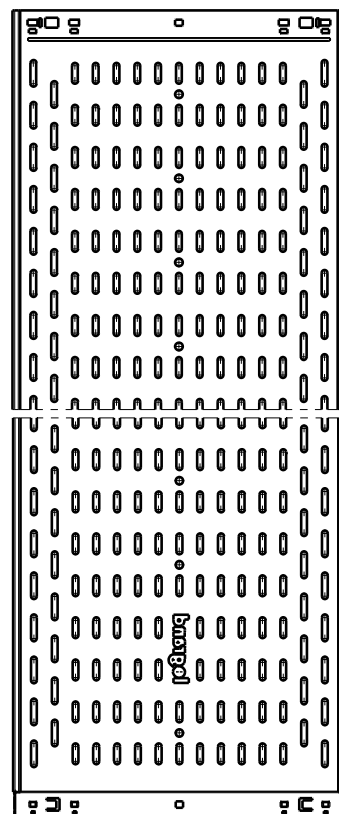
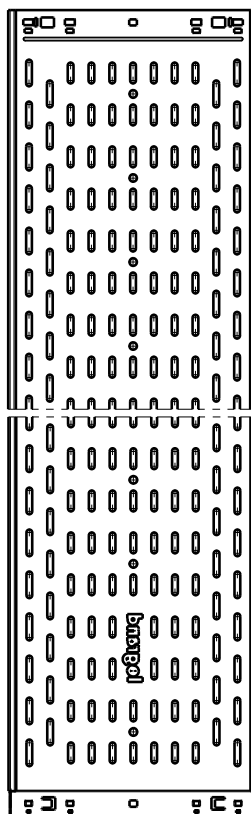
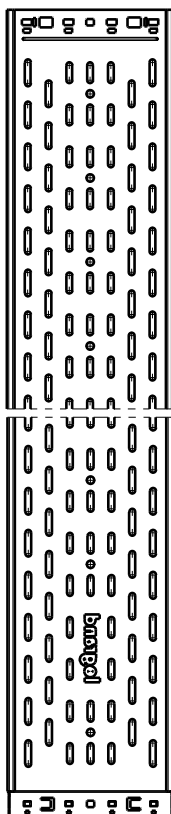
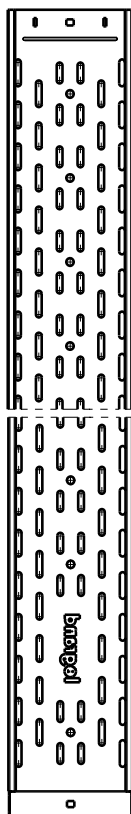
<->
100
Plat
Flat

<->
150
Plat
Flat

<->
200
Plat
Flat

<->
300/400
Plat
Flat

<->
500/600
Plat
Flat



**P31 - CHEMIN DE CÂBLES
P31 - CABLE TRAYS**

 Référence(s): **481175/00/50** **482052/53/54/57/58/59**
 Item(s): **481201/1300/1400/1500** **482852/482155/482156**
481600/487849/51/63/65 **488253/54/55/56/57/58/59/60/61**
480052/53/54/57/58/59 **486253/54/55/56/57/58/59/60/61**
480852/480155/480156 **485330/31/32/33/34/35/36/37/38**
**CHEMIN DE CÂBLES TÔLE PERFORÉE MÂLE FEMELLE À VISSER AISI304 3M (3000mm + 30mm)
PERFORATED CABLE TRAYS MALE FEMALE TO SCREW AISI304 3M (3000mm + 30mm)**

Designation Description	Code	Poids Weight (Kg)	Épaisseur Thickness (mm)	Matière Raw Material	Norme matière Standard Raw Material	Finition Coating	Norme Finition Standard Coating	Section (mm ²)
P31-DALLE PLAT 3M M/F 50X50 304 P31-TRAY PERF FLAT 3M M/F 50X50 304	488253	2,30	0,6	X5CrNi18-10	EN 10088	SS304	EN 10088	2381

**CHEMIN DE CÂBLES TÔLE PERFORÉE MÂLE FEMELLE AUTOMATIQUE AISI304 3M (3000mm + 30mm)
PERFORATED CABLE TRAYS MALE FEMALE AUTOMATIC AISI304 3M (3000mm + 30mm)**

Designation Description	Code	Poids Weight (Kg)	Épaisseur Thickness (mm)	Matière Raw Material	Norme matière Standard Raw Material	Finition Coating	Norme Finition Standard Coating	Section (mm ²)
P31-DALLE PLAT 3M M/F 50X75 AUT 304 P31-TRAY PERF FLAT 3M M/F 50X75 AUT 304	488254	2,55	0,6	X5CrNi18-10	EN 10088	SS304	EN 10088	3699
P31-DALLE PLAT 3M M/F 50X100 AUT 304 P31-TRAY PERF FLAT 3M M/F 50X100 AUT 304	488255	2,89	0,6	X5CrNi18-10	EN 10088	SS304	EN 10088	4821
P31-DALLE PLAT 3M M/F 50X150 AUT 304 P31-TRAY PERF FLAT 3M M/F 50X150 AUT 304	488256	3,52	0,6	X5CrNi18-10	EN 10088	SS304	EN 10088	7261
P31-DALLE PLAT 3M M/F 50X200 AUT 304 P31-TRAY PERF FLAT 3M M/F 50X200 AUT 304	488257	5,58	0,8	X5CrNi18-10	EN 10088	SS304	EN 10088	9701
P31-DALLE PLAT 3M M/F 50X300 AUT 304 P31-TRAY PERF FLAT 3M M/F 50X300 AUT 304	488258	7,19	0,8	X5CrNi18-10	EN 10088	SS304	EN 10088	14581
P31-DALLE PLAT 3M M/F 50X400 AUT 304 P31-TRAY PERF FLAT 3M M/F 50X400 AUT 304	488259	9,97	0,9	X5CrNi18-10	EN 10088	SS304	EN 10088	19193
P31-DALLE PLAT 3M M/F 50X500 AUT 304 P31-TRAY PERF FLAT 3M M/F 50X500 AUT 304	488260	11,86	0,9	X5CrNi18-10	EN 10088	SS304	EN 10088	24013
P31-DALLE PLAT 3M M/F 50X600 AUT 304 P31-TRAY PERF FLAT 3M M/F 50X600 AUT 304	488261	13,75	0,9	X5CrNi18-10	EN 10088	SS304	EN 10088	28833

 Classe de résistance contre la corrosion 9A (IEC 61537)
 Corrosion resistance classification 9A (IEC 61537)

**CHEMIN DE CÂBLES TÔLE PERFORÉE MÂLE FEMELLE À VISSER AISI316 3M (3000mm + 30mm)
PERFORATED CABLE TRAYS MALE FEMALE TO SCREW AISI316 3M (3000mm + 30mm)**

Designation Description	Code	Poids Weight (Kg)	Épaisseur Thickness (mm)	Matière Raw Material	Norme matière Standard Raw Material	Finition Coating	Norme Finition Standard Coating	Section (mm ²)
P31-DALLE PLAT 3M M/F 50X50 316 P31-TRAY PERF FLAT 3M M/F 50X50 316	486253	2,23	0,6	X2CrNiMo17-12-2	EN 10088	SS316L	EN 10088	2381

**CHEMIN DE CÂBLES TÔLE PERFORÉE MÂLE FEMELLE AUTOMATIQUE AISI316L 3M (3000mm + 30mm)
PERFORATED CABLE TRAYS MALE FEMALE AUTOMATIC AISI316L 3M (3000mm + 30mm)**

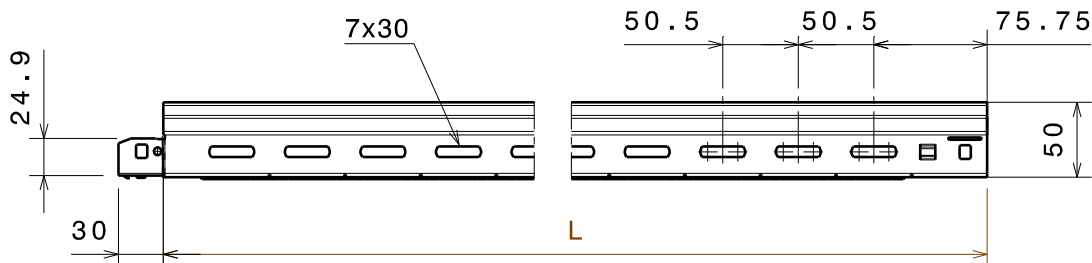
Designation Description	Code	Poids Weight (Kg)	Épaisseur Thickness (mm)	Matière Raw Material	Norme matière Standard Raw Material	Finition Coating	Norme Finition Standard Coating	Section (mm ²)
P31-DALLE PLAT 3M M/F 50X75 AUT 316 P31-TRAY PERF FLAT 3M M/F 50X75 AUT 316	486254	2,57	0,6	X2CrNiMo17-12-2	EN 10088	SS316L	EN 10088	3699
P31-DALLE PLAT 3M M/F 50X100 AUT 316 P31-TRAY PERF FLAT 3M M/F 50X100 AUT 316	486255	2,90	0,6	X2CrNiMo17-12-2	EN 10088	SS316L	EN 10088	4821
P31-DALLE PLAT 3M M/F 50X150 AUT 316 P31-TRAY PERF FLAT 3M M/F 50X150 AUT 316	486256	3,54	0,6	X2CrNiMo17-12-2	EN 10088	SS316L	EN 10088	7261
P31-DALLE PLAT 3M M/F 50X200 AUT 316 P31-TRAY PERF FLAT 3M M/F 50X200 AUT 316	486257	5,62	0,8	X2CrNiMo17-12-2	EN 10088	SS316L	EN 10088	9701
P31-DALLE PLAT 3M M/F 50X300 AUT 316 P31-TRAY PERF FLAT 3M M/F 50X300 AUT 316	486258	7,23	0,8	X2CrNiMo17-12-2	EN 10088	SS316L	EN 10088	14581
P31-DALLE PLAT 3M M/F 50X400 AUT 316 P31-TRAY PERF FLAT 3M M/F 50X400 AUT 316	486259	10,04	0,9	X2CrNiMo17-12-2	EN 10088	SS316L	EN 10088	19193
P31-DALLE PLAT 3M M/F 50X500 AUT 316 P31-TRAY PERF FLAT 3M M/F 50X500 AUT 316	486260	11,94	0,9	X2CrNiMo17-12-2	EN 10088	SS316L	EN 10088	24013
P31-DALLE PLAT 3M M/F 50X600 AUT 316 P31-TRAY PERF FLAT 3M M/F 50X600 AUT 316	486261	13,84	0,9	X2CrNiMo17-12-2	EN 10088	SS316L	EN 10088	28833

 Classe de résistance contre la corrosion 9B (IEC 61537)
 Corrosion resistance classification 9B (IEC 61537)

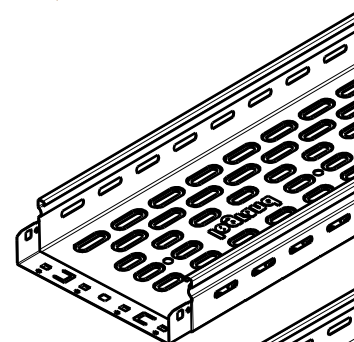
P31 - CHEMIN DE CÂBLES
P31 - CABLE TRAYS

Référence(s): **481175/00/50** **482052/53/54/57/58/59**
 Item(s): **481201/1300/1400/1500** **482852/482155/482156**
481600/487849/51/63/65 **488253/54/55/56/57/58/59/60/61**
480052/53/54/57/58/59 **486253/54/55/56/57/58/59/60/61**
480852/480155/480156 **485330/31/32/33/34/35/36/37/38**

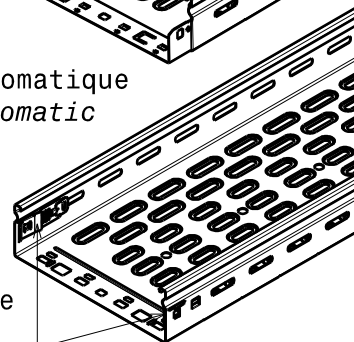
2. DIMENSIONS (mm)



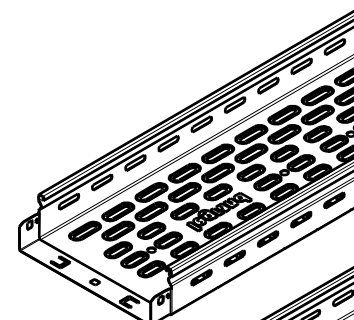
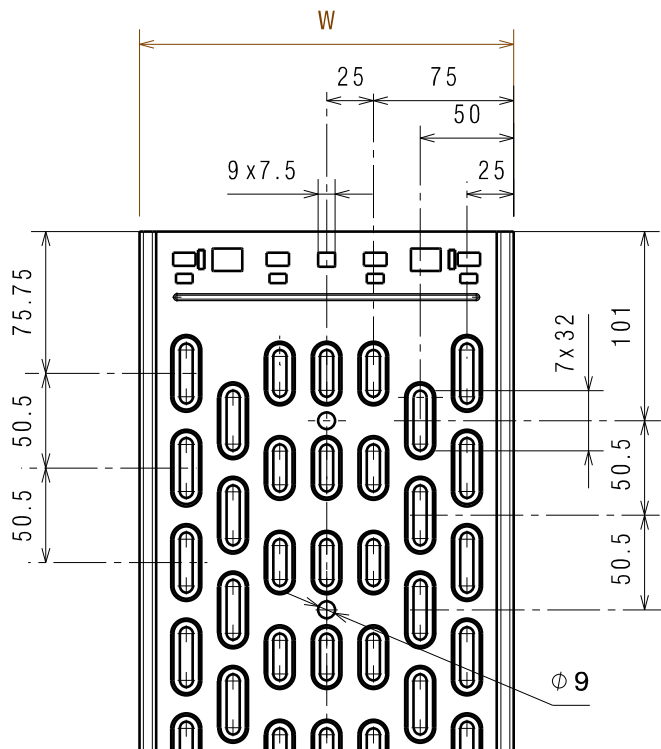
Designation Description	Largeur Width W (mm)
P31- TÔLE PERFORÉE 50X50 P31-TRAY PERFORATED 50X50	50
P31-TÔLE PERFORÉE 50X75 P31-TRAY PERFORATED 50X75	77
P31-TÔLE PERFORÉE 50X100 P31-TRAY PERFORATED 50X100	100
P31-TÔLE PERFORÉE 50X150 P31-TRAY PERFORATED 50X150	150
P31-TÔLE PERFORÉE 50X200 P31-TRAY PERFORATED 50X200	200
P31-TÔLE PERFORÉE 50X300 P31-TRAY PERFORATED 50X300	300
P31-TÔLE PERFORÉE 50X400 P31-TRAY PERFORATED 50X400	400
P31-TÔLE PERFORÉE 50X500 P31-TRAY PERFORATED 50X500	500
P31-TÔLE PERFORÉE 50X600 P31-TRAY PERFORATED 50X600	600



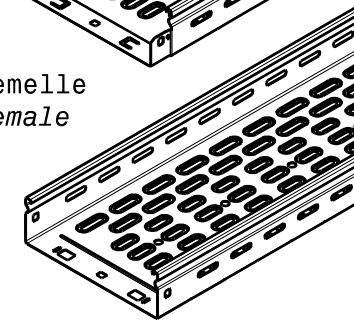
Mâle/Femelle Automatique
Male/Female Automatic



Coupleur Automatique
Automatic Coupler

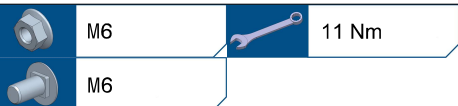


Mâle/Femelle
Male/Female



P31 - CHEMIN DE CÂBLES
P31 - CABLE TRAYS

Référence(s): **481175/00/50** **482052/53/54/57/58/59**
 Item(s): **481201/1300/1400/1500** **482852/482155/482156**
481600/487849/51/63/65 **488253/54/55/56/57/58/59/60/61**
480052/53/54/57/58/59 **486253/54/55/56/57/58/59/60/61**
480852/480155/480156 **485330/31/32/33/34/35/36/37/38**

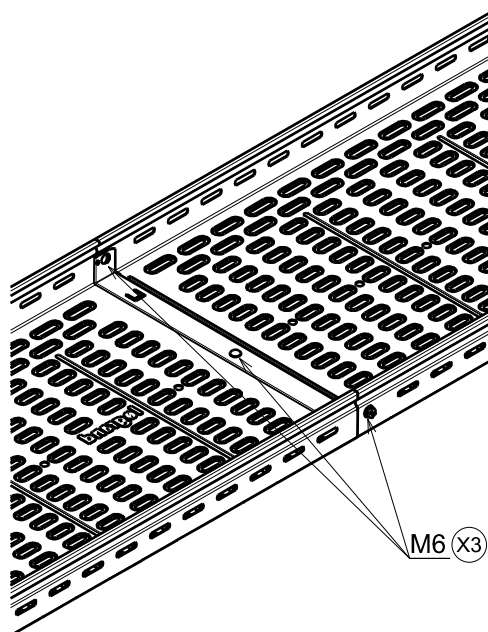
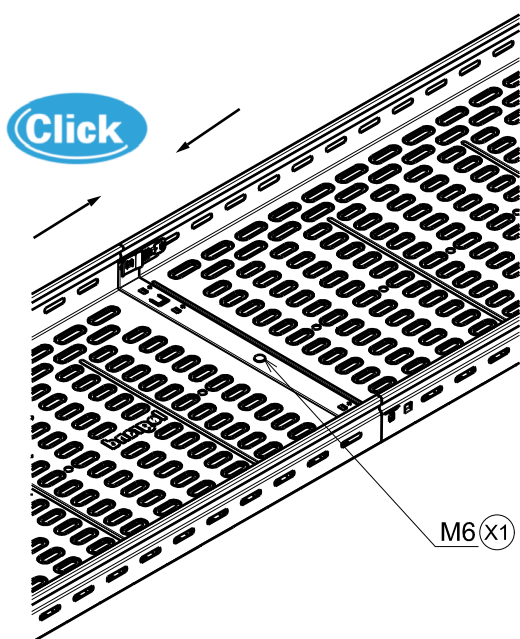
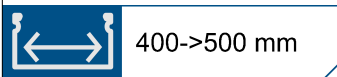
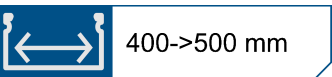
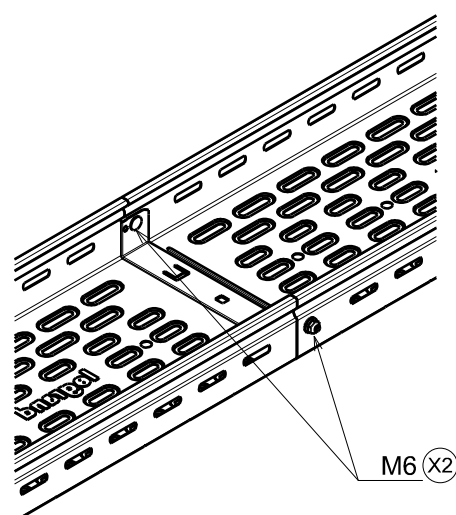
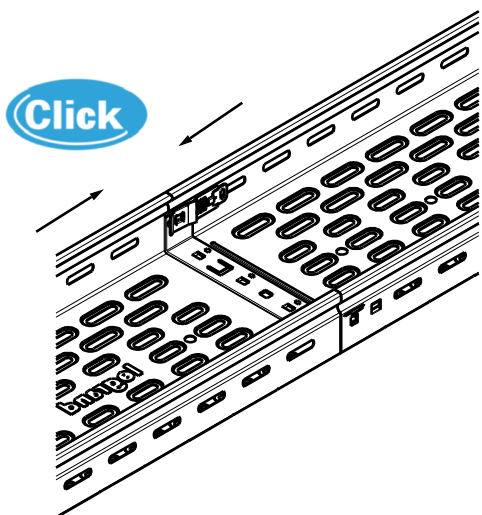
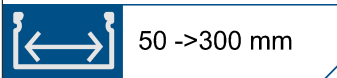
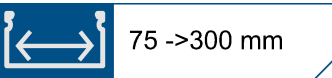


Référence(s): **341895 (GS/PG)**
 Item(s): **346895 (AISI 316L)**

3. INSTALLATION

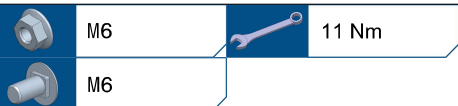
Mâle/Femelle Automatique
 Male/Female Automatic

Mâle/Femelle
 Male/Female



P31 - CHEMIN DE CÂBLES
P31 - CABLE TRAYS

Référence(s): **481175/00/50** **482052/53/54/57/58/59**
 Item(s): **481201/1300/1400/1500** **482852/482155/482156**
481600/487849/51/63/65 **488253/54/55/56/57/58/59/60/61**
480052/53/54/57/58/59 **486253/54/55/56/57/58/59/60/61**
480852/480155/480156 **485330/31/32/33/34/35/36/37/38**

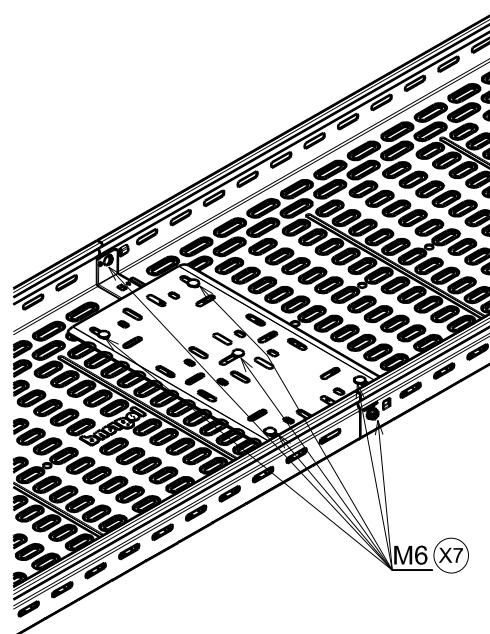
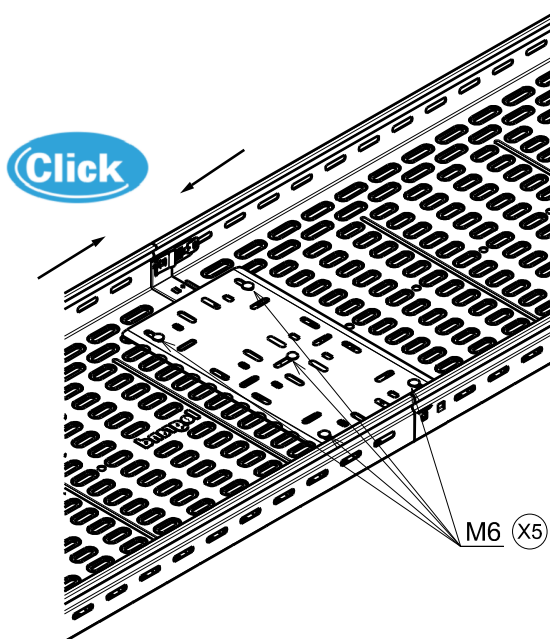


Référence(s): **341895 (GS/PG)**
 Item(s): **346895 (AISI 316L)**

3. INSTALLATION

Mâle/Femelle Automatique
Male/Female Automatic

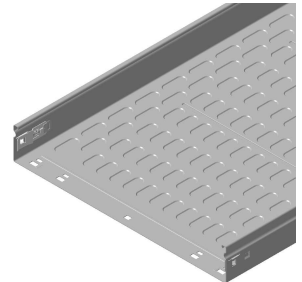
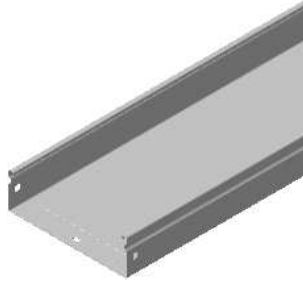
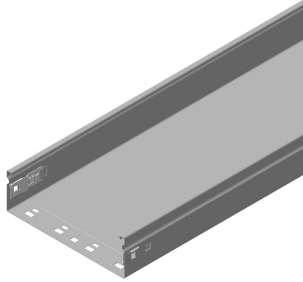
Mâle/Femelle
Male/Female



P31 - CHEMIN DE CÂBLES
P31 - CABLE TRAYS

Référence(s): **481901/2/3/4/5/6/7/8** **488262/3/4/5/6/7/8/9**
 Item(s): **480020/1/2/3/4** **488270**
481252 **486262/3/4/5/6/7/8/9**
480078/79/81 **486270**
482020/21 **485339/40/41/42/43/44/45/46/47**
482074/5/6/7/8/9/80 **487845/47/59/61**

1. GAMME/RANGE
GS, GC / PG, HDG



<->
50/75
Plat
Flat

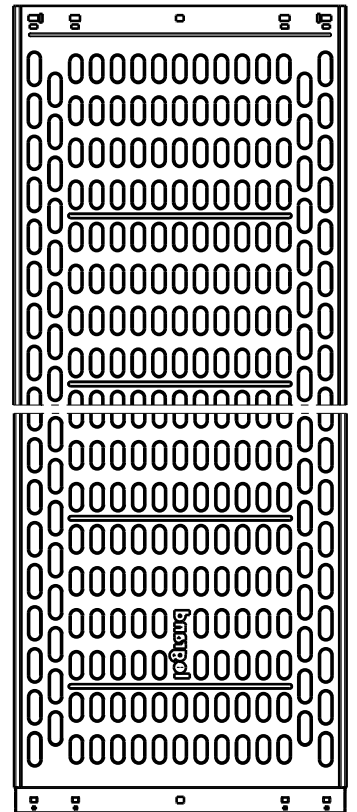
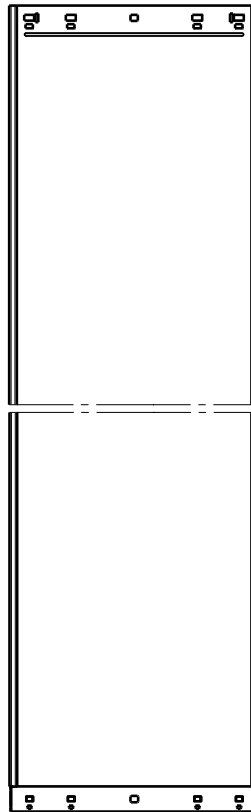
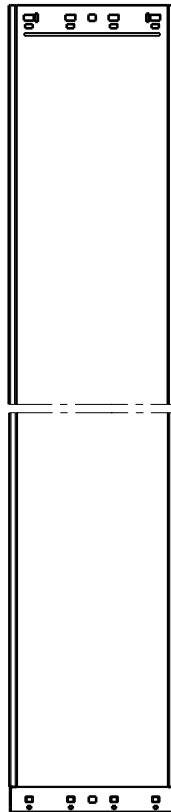
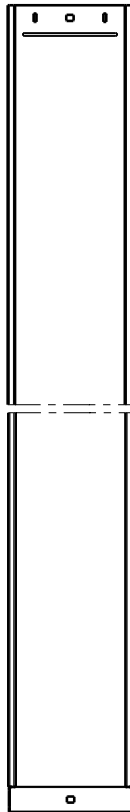
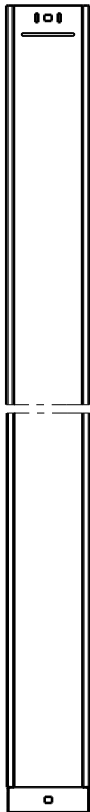
<->
100
Plat
Flat

<->
150
Plat
Flat

<->
200
Plat
Flat

<->
300
Plat
Flat

<->
400/500/600
Embouti
Embossing



**P31 - CHEMIN DE CÂBLES
P31 - CABLE TRAYS**

 Référence(s): **481901/2/3/4/5/6/7/8 488262/3/4/5/6/7/8/9**
 Item(s): **480020/1/2/3/4 488270**
481252 486262/3/4/5/6/7/8/9
480078/79/81 486270
482020/21 485339/40/41/42/43/44/45/46/47
482074/5/6/7/8/9/80 487845/47/59/61
**CHEMIN DE CÂBLES TÔLE NON PERFORÉE MÂLE FEMELLE AUTOMATIQUE GS 3M (3000mm + 30mm)
BLIND CABLE TRAYS MALE FEMALE AUTOMATIC PG 3M (3000mm + 30mm)**

Designation Description	Code	Poids Weight (Kg)	Épaisseur Thickness (mm)	Matière Raw Material	Norme matière Standard Raw Material	Finition Coating	Norme Finition Standard Coating	Section (mm ²)
P31-GOULOTTE PLAT 3M M/F 50X75 AUT GS P31-TRAY BLIND FLAT 3M M/F 50X75 AUT PG	481901	2,88	0,6	DX51D + Z200	EN 10346	GS/PG/Z	EN 10346	3699
P31-GOULOTTE PLAT 3M M/F 50X100 AUT GS P31-TRAY BLIND FLAT 3M M/F 50X100 AUT PG	481902	3,21	0,6	DX51D + Z200	EN 10346	GS/PG/Z	EN 10346	4821
P31-GOULOTTE PLAT 3M M/F 50X150 AUT GS P31-TRAY BLIND FLAT 3M M/F 50X150 AUT PG	481903	3,93	0,6	DX51D + Z200	EN 10346	GS/PG/Z	EN 10346	7261
P31-GOULOTTE PLAT 3M M/F 50X200 AUT GS P31-TRAY BLIND FLAT 3M M/F 50X200 AUT PG	481904	4,64	0,6	DX51D + Z200	EN 10346	GS/PG/Z	EN 10346	9701
P31-GOULOTTE PLAT 3M M/F 50X300 AUT GS P31-TRAY BLIND FLAT 3M M/F 50X300 AUT PG	481905	9,02	0,9	DX51D + Z200	EN 10346	GS/PG/Z	EN 10346	14373
P31-GOULOTTE EMB 3M M/F 50X400 AUT GS P31-TRAY BLIND EMB 3M M/F 50X400 AUT PG	481906	11,16	0,9	DX51D + Z200	EN 10346	GS/PG/Z	EN 10346	19193
P31-GOULOTTE EMB 3M M/F 50X500 AUT GS P31-TRAY BLIND EMB 3M M/F 50X500 AUT PG	481907	13,30	0,9	DX51D + Z200	EN 10346	GS/PG/Z	EN 10346	24013
P31-GOULOTTE EMB 3M M/F 50X600 AUT GS P31-TRAY BLIND EMB 3M M/F 50X600 AUT PG	481908	15,45	0,9	DX51D + Z200	EN 10346	GS/PG/Z	EN 10346	28833

 Classe de résistance contre la corrosion 3 (IEC 61537)
 Corrosion resistance classification 3 (IEC 61537)

**CHEMIN DE CÂBLES TÔLE NON PERFORÉE MÂLE FEMELLE À VISSER GS 3M (3000mm + 30mm)
BLIND CABLE TRAYS MALE FEMALE TO SCREW PG 3M (3000mm + 30mm)**

Designation Description	Code	Poids Weight (Kg)	Épaisseur Thickness (mm)	Matière Raw Material	Norme matière Standard Raw Material	Finition Coating	Norme Finition Standard Coating	Section (mm ²)
P31-GOULOTTE PLAT 3M M/F 50X50 GS P31-TRAY BLIND FLAT 3M M/F 50X50 PG	480020	2,50	0,6	DX51D + Z200	EN 10346	GS/PG/Z	EN 10346	2381
P31-GOULOTTE PLAT 3M M/F 50X75 GS P31-TRAY BLIND FLAT 3M M/F 50X75 PG	481252	2,88	0,6	DX51D + Z200	EN 10346	GS/PG/Z	EN 10346	3699
P31-GOULOTTE PLAT 3M M/F 50X100 GS P31-TRAY BLIND FLAT 3M M/F 50X100 PG	480021	3,21	0,6	DX51D + Z200	EN 10346	GS/PG/Z	EN 10346	4821
P31-GOULOTTE PLAT 3M M/F 50X150 GS P31-TRAY BLIND FLAT 3M M/F 50X150 PG	480022	3,93	0,6	DX51D + Z200	EN 10346	GS/PG/Z	EN 10346	7261
P31-GOULOTTE PLAT 3M M/F 50X200 GS P31-TRAY BLIND FLAT 3M M/F 50X200 PG	480023	4,64	0,6	DX51D + Z200	EN 10346	GS/PG/Z	EN 10346	9701
P31-GOULOTTE PLAT 3M M/F 50X300 GS P31-TRAY BLIND FLAT 3M M/F 50X300 PG	480024	9,02	0,9	DX51D + Z200	EN 10346	GS/PG/Z	EN 10346	14373
P31-GOULOTTE EMB 3M M/F 50X400 GS P31-TRAY BLIND EMB 3M M/F 50X400 PG	480078	11,16	0,9	DX51D + Z200	EN 10346	GS/PG/Z	EN 10346	19193
P31-GOULOTTE EMB 3M M/F 50X500 GS P31-TRAY BLIND EMB 3M M/F 50X500 PG	480079	13,30	0,9	DX51D + Z200	EN 10346	GS/PG/Z	EN 10346	24013
P31-GOULOTTE EMB 3M M/F 50X600 GS P31-TRAY BLIND EMB 3M M/F 50X600 PG	480081	15,45	0,9	DX51D + Z200	EN 10346	GS/PG/Z	EN 10346	28833

 Classe de résistance contre la corrosion 3 (IEC 61537)
 Corrosion resistance classification 3 (IEC 61537)

**P31 - CHEMIN DE CÂBLES
P31 - CABLE TRAYS**

 Référence(s): **481901/2/3/4/5/6/7/8 488262/3/4/5/6/7/8/9**
 Item(s): **480020/1/2/3/4 488270**
481252 486262/3/4/5/6/7/8/9
480078/79/81 486270
482020/21 485339/40/41/42/43/44/45/46/47
482074/5/6/7/8/9/80 487845/47/59/61
CHEMIN DE CÂBLES TÔLE NON PERFORÉE MÂLE FEMELLE À VISSER RAL 3M (3000mm + 30mm)
BLIND CABLE TRAYS MALE FEMALE TO SCREW RAL 3M (3000mm + 30mm)

Designation Description	Code	Poids Weight (Kg)	Épaisseur Thickness (mm)	Matière Raw Material	Norme matière Standard Raw Material	Finition Coating	Norme Finition Standard Coating	Section (mm ²)
P31-GOULOTTE PLAT 3M M/F 50X100 RAL9005 P31-TRAY BLIND FLAT 3M M/F 50X100 RAL9005	487845	3,23	0,6	DX51D+Z200	EN 10346	RAL9005	-	4821
P31-GOULOTTE PLAT 3M M/F 50X300 RAL9005 P31-TRAY BLIND FLAT 3M M/F 50X300 RAL9005	487847	9,08	0,9	DX51D+Z200	EN 10346	RAL9005	-	14373
P31-GOULOTTE PLAT 3M M/F 50X100 RAL9016 P31-TRAY BLIND FLAT 3M M/F 50X100 RAL9016	487859	3,23	0,6	DX51D+Z200	EN 10346	RAL9016	-	4821
P31-GOULOTTE PLAT 3M M/F 50X300 RAL9016 P31-TRAY BLIND FLAT 3M M/F 50X300 RAL9016	487861	9,08	0,9	DX51D+Z200	EN 10346	RAL9016	-	14373

 Classe de résistance contre la corrosion 3 (IEC 61537)
 Corrosion resistance classification 3 (IEC 61537)

CHEMIN DE CÂBLES TÔLE NON PERFORÉE MÂLE FEMELLE À VISSER GC 3M (3000mm + 30mm)
BLIND CABLE TRAYS MALE FEMALE TO SCREW HDG 3M (3000mm + 30mm)

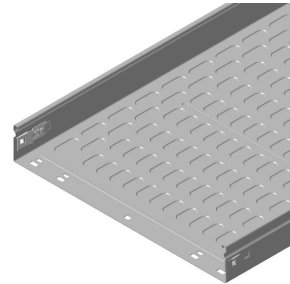
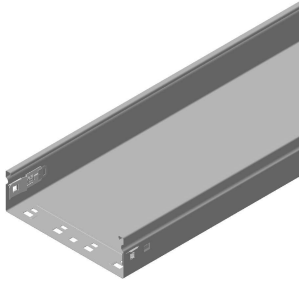
Designation Description	Code	Poids Weight (Kg)	Épaisseur Thickness (mm)	Matière Raw Material	Norme matière Standard Raw Material	Finition Coating	Norme Finition Standard Coating	Section (mm ²)
P31-GOULOTTE PLAT 3M M/F 50X50 GC P31-TRAY BLIND FLAT 3M M/F 50X50 HDG	482020	2,75	0,6	DC 01	EN 10130	GC/HDG/C	ISO 1461	2381
P31-GOULOTTE PLAT 3M M/F 50X75 GC P31-TRAY BLIND FLAT 3M M/F 50X75 HDG	482021	3,17	0,6	DC 01	EN 10130	GC/HDG/C	ISO 1461	3699
P31-GOULOTTE PLAT 3M M/F 50X100 GC P31-TRAY BLIND FLAT 3M M/F 50X100 HDG	482074	3,53	0,6	DC 01	EN 10130	GC/HDG/C	ISO 1461	4821
P31-GOULOTTE PLAT 3M M/F 50X150 GC P31-TRAY BLIND FLAT 3M M/F 50X150 HDG	482075	4,32	0,6	DC 01	EN 10130	GC/HDG/C	ISO 1461	7261
P31-GOULOTTE PLAT 3M M/F 50X200 GC P31-TRAY BLIND FLAT 3M M/F 50X200 HDG	482076	5,10	0,6	DC 01	EN 10130	GC/HDG/C	ISO 1461	9701
P31-GOULOTTE PLAT 3M M/F 50X300 GC P31-TRAY BLIND FLAT 3M M/F 50X300 HDG	482077	9,92	0,9	DC 01	EN 10130	GC/HDG/C	ISO 1461	14373
P31-GOULOTTE EMB 3M M/F 50X400 GC P31-TRAY BLIND EMB 3M M/F 50X400 HDG	482078	12,28	0,9	DC 01	EN 10130	GC/HDG/C	ISO 1461	19193
P31-GOULOTTE EMB 3M M/F 50X500 GC P31-TRAY BLIND EMB 3M M/F 50X500 HDG	482079	14,63	0,9	DC 01	EN 10130	GC/HDG/C	ISO 1461	24013
P31-GOULOTTE EMB 3M M/F 50X600 GC P31-TRAY BLIND EMB 3M M/F 50X600 HDG	482080	17,00	0,9	DC 01	EN 10130	GC/HDG/C	ISO 1461	28833

 Classe de résistance contre la corrosion 6 (IEC 61537)
 Corrosion resistance classification 6 (IEC 61537)

P31 - CHEMIN DE CÂBLES
P31 - CABLE TRAYS

Référence(s): **481901/2/3/4/5/6/7/8** **488262/3/4/5/6/7/8/9**
 Item(s): **480020/1/2/3/4** **488270**
481252 **486262/3/4/5/6/7/8/9**
480078/79/81 **486270**
482020/21 **485339/40/41/42/43/44/45/46/47**
482074/5/6/7/8/9/80 **487845/47/59/61**

1. GAMME/RANGE
Zinc-Magnésium / Zn-Mg



<->
50/75
Plat
Flat

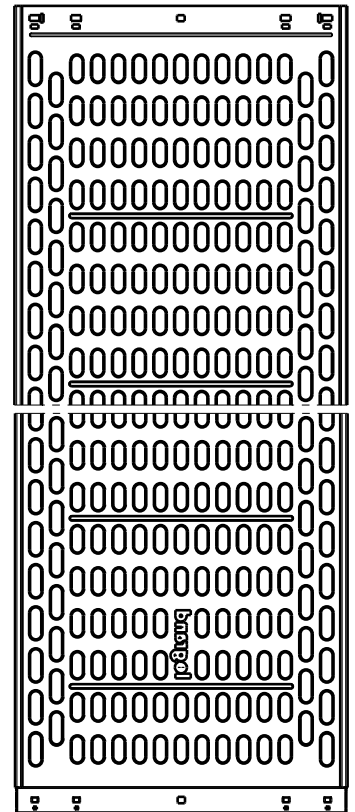
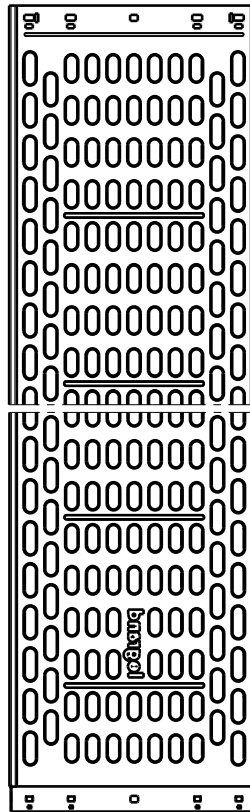
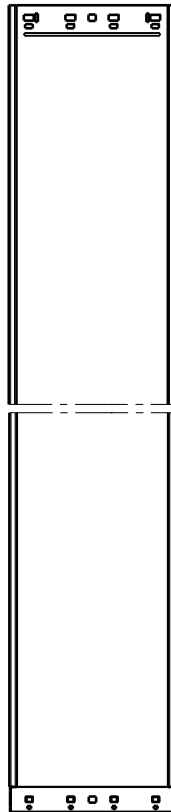
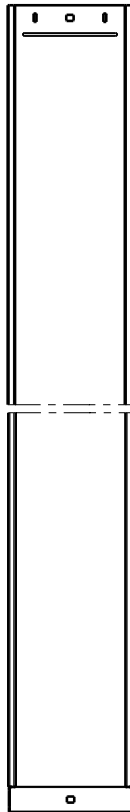
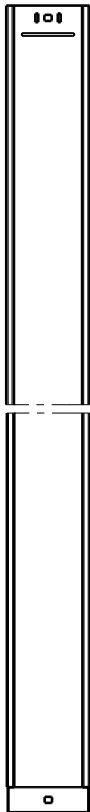
<->
100
Plat
Flat

<->
150
Plat
Flat

<->
200
Plat
Flat

<->
300/400
Embouti
Embossing

<->
500/600
Embouti
Embossing



**P31 - CHEMIN DE CÂBLES
P31 - CABLE TRAYS**

 Référence(s): **481901/2/3/4/5/6/7/8 488262/3/4/5/6/7/8/9**
 Item(s): **480020/1/2/3/4 488270**
481252 486262/3/4/5/6/7/8/9
480078/79/81 486270
482020/21 485339/40/41/42/43/44/45/46/47
482074/5/6/7/8/9/80 487845/47/59/61
CHEMIN DE CÂBLES TÔLE NON PERFORÉE MÂLE FEMELLE À VISSER Zn-Mg 3M (3000mm + 30mm)
BLIND CABLE TRAYS MALE FEMALE TO SCREW Zn-Mg 3M (3000mm + 30mm)

Designation Description	Code	Poids Weight (Kg)	Épaisseur Thickness (mm)	Matière Raw Material	Norme matière Standard Raw Material	Finition Coating	Norme Finition Standard Coating	Section (mm ²)
P31-GOULOTTE PLAT 3M M/F 50X50 ZM P31-TRAY BLIND FLAT 3M M/F 50X50 ZM	485339	2,50	0,6	DX51D +ZM310 A-C	EN 10346	Zn-Mg	EN 10346	2381

 Classe de résistance contre la corrosion 8 (IEC 61537)
 Corrosion resistance classification 8 (IEC 61537)

CHEMIN DE CÂBLES TÔLE NON PERFORÉE MÂLE FEMELLE AUTOMATIQUE Zn-Mg 3M (3000mm + 30mm)
BLIND CABLE TRAYS MALE FEMALE AUTOMATIC Zn-Mg 3M (3000mm + 30mm)

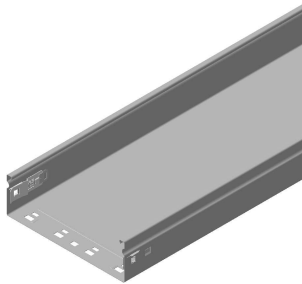
Designation Description	Code	Poids Weight (Kg)	Épaisseur Thickness (mm)	Matière Raw Material	Norme matière Standard Raw Material	Finition Coating	Norme Finition Standard Coating	Section (mm ²)
P31-GOULOTTE PLAT 3M M/F 50X75 AUT ZM P31-TRAY BLIND FLAT 3M M/F 50X75 AUT ZM	485340	2,88	0,6	DX51D +ZM310 A-C	EN 10346	Zn-Mg	EN 10346	3699
P31-GOULOTTE PLAT 3M M/F 50X100 AUT ZM P31-TRAY BLIND FLAT 3M M/F 50X100 AUT ZM	485341	3,21	0,6	DX51D +ZM310 A-C	EN 10346	Zn-Mg	EN 10346	4821
P31-GOULOTTE PLAT 3M M/F 50X150 AUT ZM P31-TRAY BLIND FLAT 3M M/F 50X150 AUT ZM	485342	3,93	0,6	DX51D +ZM310 A-C	EN 10346	Zn-Mg	EN 10346	7261
P31-GOULOTTE PLAT 3M M/F 50X200 AUT ZM P31-TRAY BLIND FLAT 3M M/F 50X200 AUT ZM	485343	4,64	0,6	DX51D +ZM310 A-C	EN 10346	Zn-Mg	EN 10346	9701
P31-GOULOTTE EMB 3M M/F 50X300 AUT ZM P31-TRAY BLIND EMB 3M M/F 50X300 AUT ZM	485344	8,14	0,8	DX51D +ZM310 A-C	EN 10346	Zn-Mg	EN 10346	12776
P31-GOULOTTE EMB 3M M/F 50X400 AUT ZM P31-TRAY BLIND EMB 3M M/F 50X400 AUT ZM	485345	12,59	1,0	DX51D +ZM310 A-C	EN 10346	Zn-Mg	EN 10346	17273
P31-GOULOTTE EMB 3M M/F 50X500 AUT ZM P31-TRAY BLIND EMB 3M M/F 50X500 AUT ZM	485346	15,01	1,0	DX51D +ZM310 A-C	EN 10346	Zn-Mg	EN 10346	21611
P31-GOULOTTE EMB 3M M/F 50X600 AUT ZM P31-TRAY BLIND EMB 3M M/F 50X600 AUT ZM	485347	17,42	1,0	DX51D +ZM310 A-C	EN 10346	Zn-Mg	EN 10346	25949

 Classe de résistance contre la corrosion 8 (IEC 61537)
 Corrosion resistance classification 8 (IEC 61537)

P31 - CHEMIN DE CÂBLES
P31 - CABLE TRAYS

Référence(s): **481901/2/3/4/5/6/7/8** **488262/3/4/5/6/7/8/9**
 Item(s): **480020/1/2/3/4** **488270**
481252 **486262/3/4/5/6/7/8/9**
480078/79/81 **486270**
482020/21 **485339/40/41/42/43/44/45/46/47**
482074/5/6/7/8/9/80 **487845/47/59/61**

1. GAMME/RANGE
Inox/Stainless steel



<->
50/75
Plat
Flat

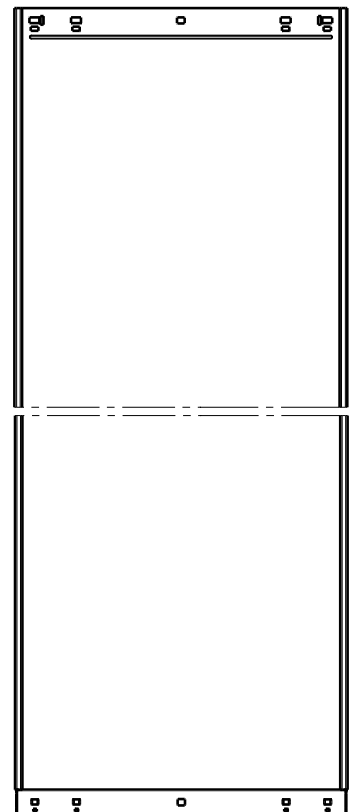
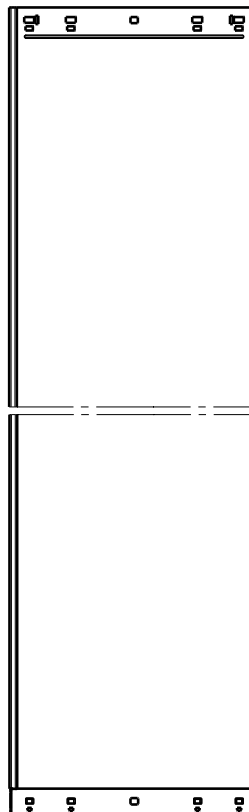
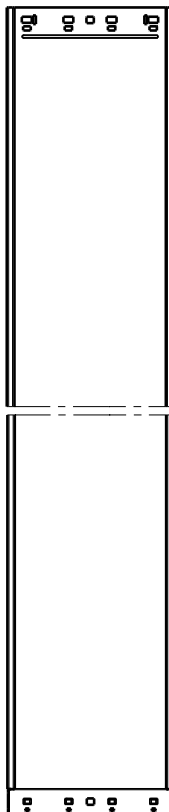
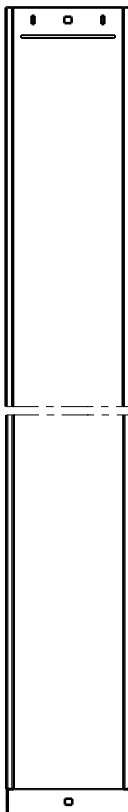
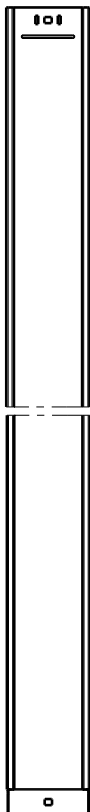
<->
100
Plat
Flat

<->
150
Plat
Flat

<->
200
Plat
Flat

<->
300/400
Plat
Flat

<->
500/600
Plat
Flat



**P31 - CHEMIN DE CÂBLES
P31 - CABLE TRAYS**

 Référence(s): **481901/2/3/4/5/6/7/8 488262/3/4/5/6/7/8/9**
 Item(s): **480020/1/2/3/4 488270**
481252 486262/3/4/5/6/7/8/9
480078/79/81 486270
482020/21 485339/40/41/42/43/44/45/46/47
482074/5/6/7/8/9/80 487845/47/59/61
**CHEMIN DE CÂBLES TÔLE NON PERFORÉE MÂLE FEMELLE À VISSER AISI304 3M (3000mm + 30mm)
BLIND CABLE TRAYS MALE FEMALE TO SCREW AISI304 3M (3000mm + 30mm)**

Designation Description	Code	Poids Weight (Kg)	Épaisseur Thickness (mm)	Matière Raw Material	Norme matière Standard Raw Material	Finition Coating	Norme Finition Standard Coating	Section (mm ²)
P31-GOULOTTE PLAT 3M M/F 50X50 304 P31-TRAY BLIND FLAT 3M M/F 50X50 304	488262	2,50	0,6	X5CrNi18-10	EN 10088	SS304	EN 10088	2381

**CHEMIN DE CÂBLES TÔLE NON PERFORÉE MÂLE FEMELLE AUTOMATIQUE AISI304 3M (3000mm + 30mm)
BLIND CABLE TRAYS MALE FEMALE AUTOMATIC AISI304 3M (3000mm + 30mm)**

Designation Description	Code	Poids Weight (Kg)	Épaisseur Thickness (mm)	Matière Raw Material	Norme matière Standard Raw Material	Finition Coating	Norme Finition Standard Coating	Section (mm ²)
P31-GOULOTTE PLAT 3M M/F 50X75 AUT 304 P31-TRAY BLIND FLAT 3M M/F 50X75 AUT 304	488263	2,91	0,6	X5CrNi18-10	EN 10088	SS304	EN 10088	3699
P31-GOULOTTE PLAT 3M M/F 50X100 AUT 304 P31-TRAY BLIND FLAT 3M M/F 50X100 AUT 304	488264	3,24	0,6	X5CrNi18-10	EN 10088	SS304	EN 10088	4821
P31-GOULOTTE PLAT 3M M/F 50X150 AUT 304 P31-TRAY BLIND FLAT 3M M/F 50X150 AUT 304	488265	3,96	0,6	X5CrNi18-10	EN 10088	SS304	EN 10088	7261
P31-GOULOTTE PLAT 3M M/F 50X200 AUT 304 P31-TRAY BLIND FLAT 3M M/F 50X200 AUT 304	488266	6,24	0,8	X5CrNi18-10	EN 10088	SS304	EN 10088	9701
P31-GOULOTTE PLAT 3M M/F 50X300 AUT 304 P31-TRAY BLIND FLAT 3M M/F 50X300 AUT 304	488267	8,08	0,8	X5CrNi18-10	EN 10088	SS304	EN 10088	14373
P31-GOULOTTE PLAT 3M M/F 50X400 AUT 304 P31-TRAY BLIND FLAT 3M M/F 50X400 AUT 304	488268	11,26	0,9	X5CrNi18-10	EN 10088	SS304	EN 10088	19193
P31-GOULOTTE PLAT 3M M/F 50X500 AUT 304 P31-TRAY BLIND FLAT 3M M/F 50X500 AUT 304	488269	13,42	0,9	X5CrNi18-10	EN 10088	SS304	EN 10088	24013
P31-GOULOTTE PLAT 3M M/F 50X600 AUT 304 P31-TRAY BLIND FLAT 3M M/F 50X600 AUT 304	488270	15,60	0,9	X5CrNi18-10	EN 10088	SS304	EN 10088	28833

 Classe de résistance contre la corrosion 9A (IEC 61537)
 Corrosion resistance classification 9A (IEC 61537)

**CHEMIN DE CÂBLES TÔLE NON PERFORÉE MÂLE FEMELLE À VISSER AISI316 3M (3000mm + 30mm)
BLIND CABLE TRAYS MALE FEMALE TO SCREW AISI316 3M (3000mm + 30mm)**

Designation Description	Code	Poids Weight (Kg)	Épaisseur Thickness (mm)	Matière Raw Material	Norme matière Standard Raw Material	Finition Coating	Norme Finition Standard Coating	Section (mm ²)
P31-GOULOTTE PLAT 3M M/F 50X50 316 P31-TRAY BLIND FLAT 3M M/F 50X50 316	486262	2,50	0,6	X2CrNiMo17-12-2	EN 10088	SS316L	EN 10088	2381

**CHEMIN DE CÂBLES TÔLE NON PERFORÉE MÂLE FEMELLE AUTOMATIQUE AISI316L 3M (3000mm + 30mm)
BLIND CABLE TRAYS MALE FEMALE AUTOMATIC AISI316L 3M (3000mm + 30mm)**

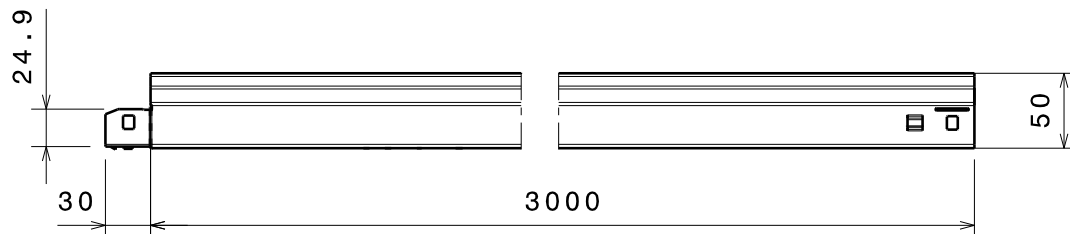
Designation Description	Code	Poids Weight (Kg)	Épaisseur Thickness (mm)	Matière Raw Material	Norme matière Standard Raw Material	Finition Coating	Norme Finition Standard Coating	Section (mm ²)
P31-GOULOTTE PLAT 3M M/F 50X75 AUT 316 P31-TRAY BLIND FLAT 3M M/F 50X75 AUT 316	486263	2,93	0,6	X2CrNiMo17-12-2	EN 10088	SS316L	EN 10088	3699
P31-GOULOTTE PLAT 3M M/F 50X100 AUT 316 P31-TRAY BLIND FLAT 3M M/F 50X100 AUT 316	486264	3,26	0,6	X2CrNiMo17-12-2	EN 10088	SS316L	EN 10088	4821
P31-GOULOTTE PLAT 3M M/F 50X150 AUT 316 P31-TRAY BLIND FLAT 3M M/F 50X150 AUT 316	486265	3,99	0,6	X2CrNiMo17-12-2	EN 10088	SS316L	EN 10088	7261
P31-GOULOTTE PLAT 3M M/F 50X200 AUT 316 P31-TRAY BLIND FLAT 3M M/F 50X200 AUT 316	486266	6,28	0,8	X2CrNiMo17-12-2	EN 10088	SS316L	EN 10088	9701
P31-GOULOTTE PLAT 3M M/F 50X300 AUT 316 P31-TRAY BLIND FLAT 3M M/F 50X300 AUT 316	486267	8,13	0,8	X2CrNiMo17-12-2	EN 10088	SS316L	EN 10088	14581
P31-GOULOTTE PLAT 3M M/F 50X400 AUT 316 P31-TRAY BLIND FLAT 3M M/F 50X400 AUT 316	486268	11,33	0,9	X2CrNiMo17-12-2	EN 10088	SS316L	EN 10088	19193
P31-GOULOTTE PLAT 3M M/F 50X500 AUT 316 P31-TRAY BLIND FLAT 3M M/F 50X500 AUT 316	486269	13,50	0,9	X2CrNiMo17-12-2	EN 10088	SS316L	EN 10088	24013
P31-GOULOTTE PLAT 3M M/F 50X600 AUT 316 P31-TRAY BLIND FLAT 3M M/F 50X600 AUT 316	486270	15,68	0,9	X2CrNiMo17-12-2	EN 10088	SS316L	EN 10088	28833

 Classe de résistance contre la corrosion 9B (IEC 61537)
 Corrosion resistance classification 9B (IEC 61537)

P31 - CHEMIN DE CÂBLES
P31 - CABLE TRAYS

Référence(s): **481901/2/3/4/5/6/7/8** **488262/3/4/5/6/7/8/9**
Item(s): **480020/1/2/3/4** **488270**
481252 **486262/3/4/5/6/7/8/9**
480078/79/81 **486270**
482020/21 **485339/40/41/42/43/44/45/46/47**
482074/5/6/7/8/9/80 **487845/47/59/61**

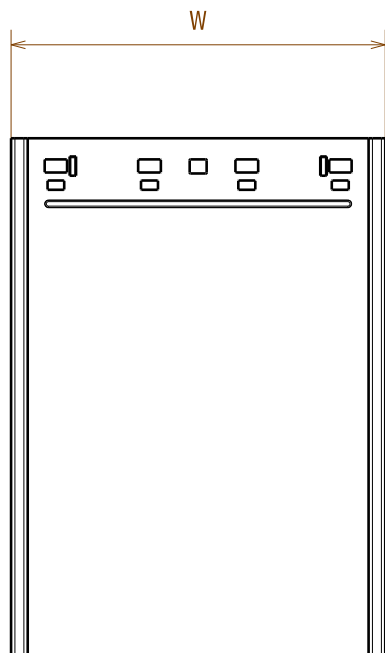
2. DIMENSIONS (mm)



Designation Description	Largeur Width W (mm)
P31-GOULOTTE 50X50 P31-TRAY BLIND 50X50	50
P31-GOULOTTE 50X75 P31-TRAY BLIND 50X75	77
P31-GOULOTTE 50X100 P31-TRAY BLIND 50X100	100
P31-GOULOTTE 50X150 P31-TRAY BLIND 50X150	150
P31-GOULOTTE 50X200 P31-TRAY BLIND 50X200	200
P31-GOULOTTE 50X300 P31-TRAY BLIND 50X300	300
P31-GOULOTTE 50X400 P31-TRAY BLIND 50X400	400
P31-GOULOTTE 50X500 P31-TRAY BLIND 50X500	500
P31-GOULOTTE 50X600 P31-TRAY BLIND 50X600	600

Mâle/Femelle Automatique
Male/Female Automatic

Coupleur Automatique
Automatic Coupler



Mâle/Femelle
Male/Female

P31 - CHEMIN DE CÂBLES
P31 - CABLE TRAYS

Référence(s):	481901/2/3/4/5/6/7/8	488262/3/4/5/6/7/8/9
Item(s):	480020/1/2/3/4	488270
	481252	486262/3/4/5/6/7/8/9
	480078/79/81	486270
	482020/21	485339/40/41/42/43/44/45/46/47
	482074/5/6/7/8/9/80	487845/47/59/61

	M6		11 Nm
	M6		

Référence(s): **341895 (GS/PG)**
Item(s): **346895 (AISI 316L)**

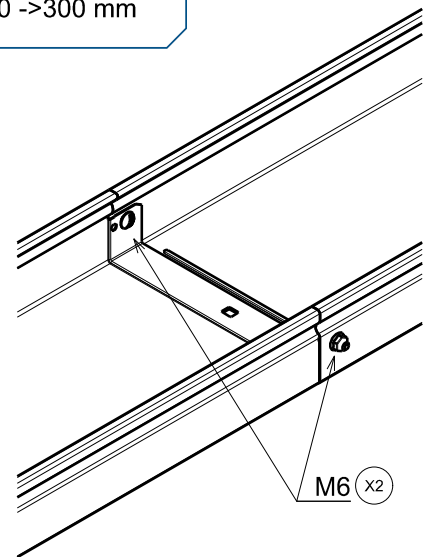
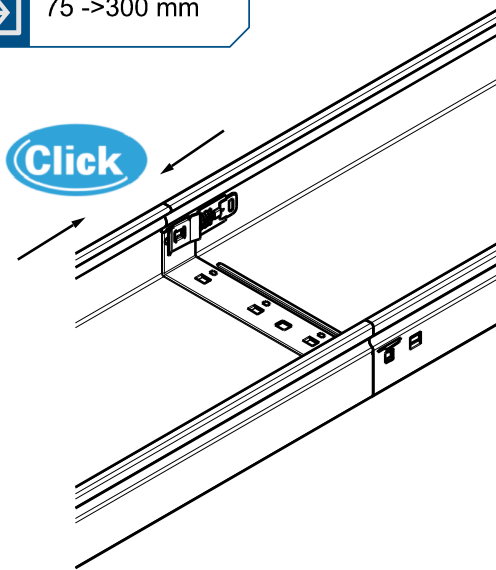
3. INSTALLATION

Mâle/Femelle Automatique
Male/Female Automatic

Mâle/Femelle
Male/Female

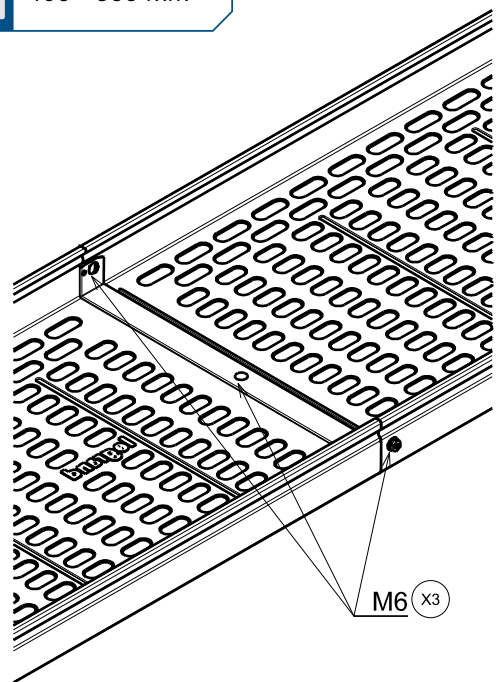
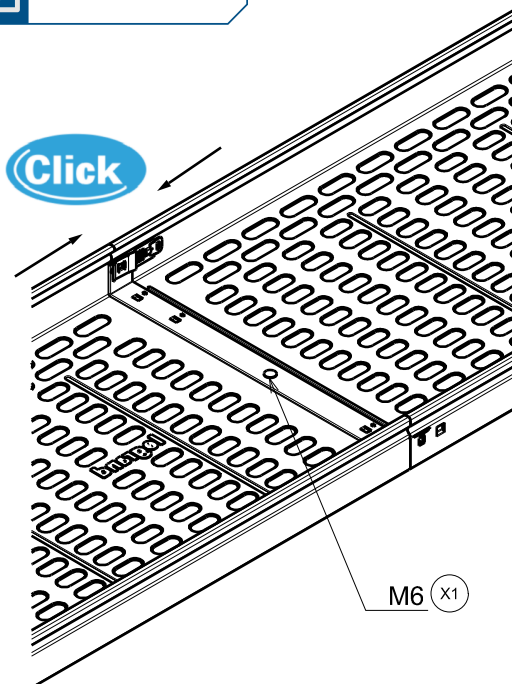
75 ->300 mm

50 ->300 mm



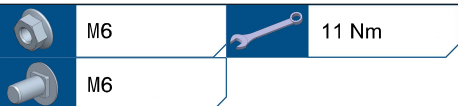
400->500 mm

400->500 mm



P31 - CHEMIN DE CÂBLES
P31 - CABLE TRAYS

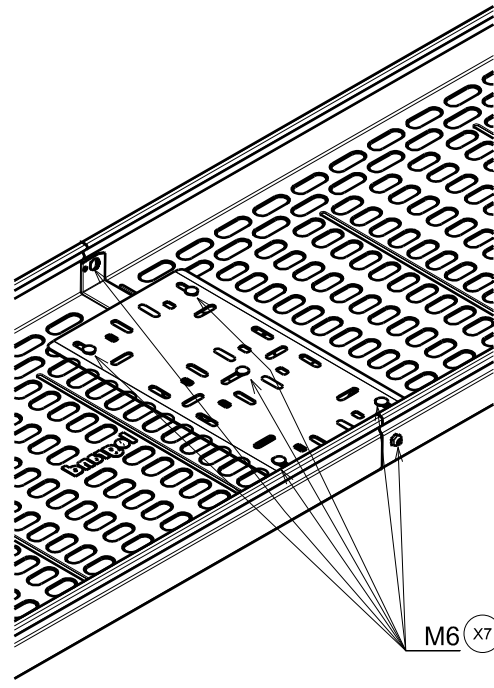
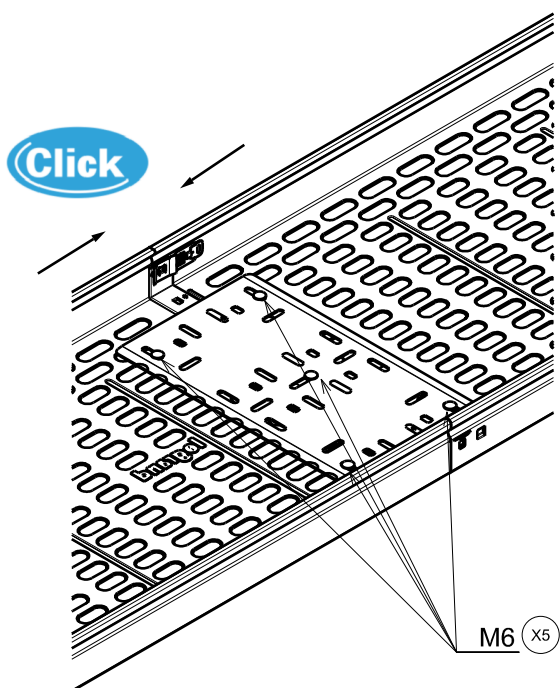
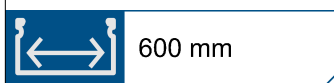
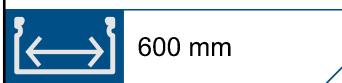
Référence(s):	481901/2/3/4/5/6/7/8	488262/3/4/5/6/7/8/9
Item(s):	480020/1/2/3/4	488270
	481252	486262/3/4/5/6/7/8/9
	480078/79/81	486270
	482020/21	485339/40/41/42/43/44/45/46/47
	482074/5/6/7/8/9/80	487845/47/59/61



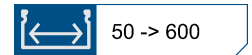
Référence(s):	341895 (GS/PG)
Item(s):	346895 (AISI 316L)

3. INSTALLATION

 Mâle/Femelle Automatique
 Male/Female Automatic

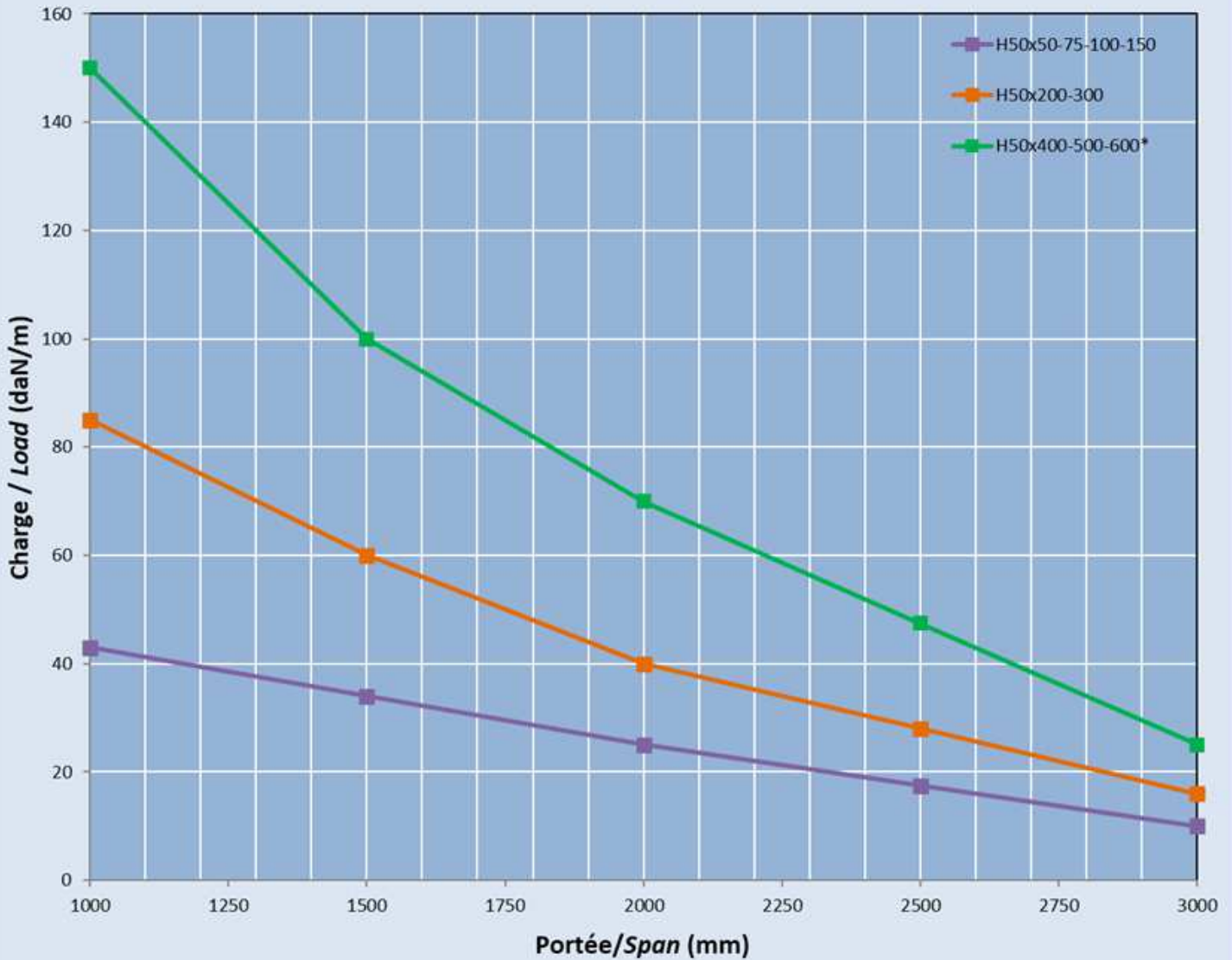
 Mâle/Femelle
 Male/Female


P31 - CHEMIN DE CÂBLES
P31 - CABLE TRAYS



4. CHARGES ADMISSIBLES
LOADING GRAPHS

H50 M/F/Auto and M/F - TEST TYPE II (IEC 61537)

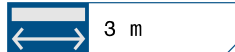
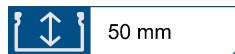


*Eclisse de fond pour largeurs de 600mm (voir pages 11 et 21)

*Bottom plate for width 600mm (see pages 11 and 21)

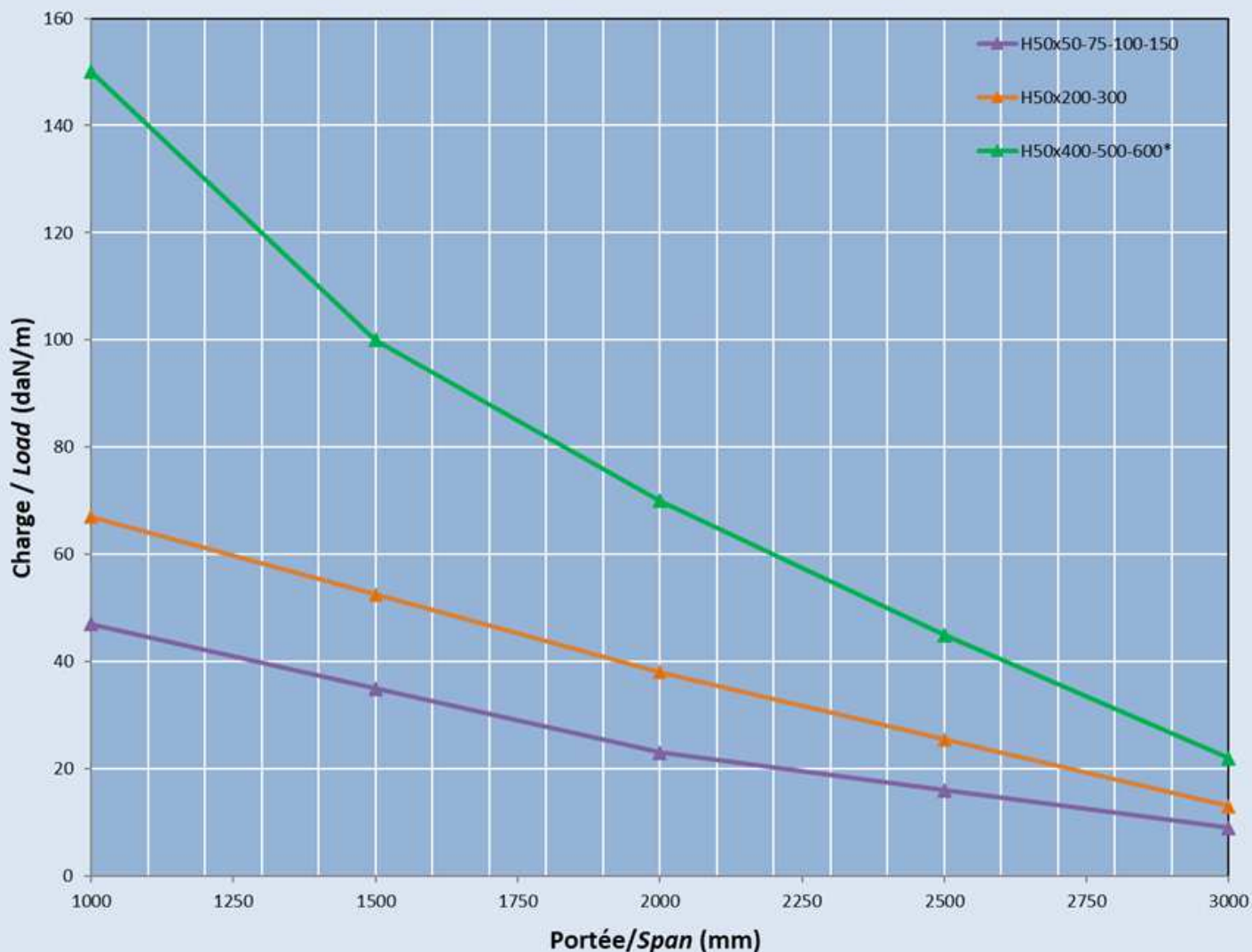
Designation Description	Finition GS Coating PG	Finition GC Coating HDG	Finition SS316L Coating SS316L
Eclisse de fond 600 Bottom plate 600	481183	482343	486018

P31 - CHEMIN DE CÂBLES
P31 - CABLE TRAYS



4. CHARGES ADMISSIBLES
LOADING GRAPHS

H50 M/F/Auto Inox - TEST TYPE II (IEC 61537)



*Eclisse de fond pour largeurs de 600mm (voir pages 11 et 21)

*Bottom plate for width 600mm (see pages 11 and 21)

Designation Description	Finition GS Coating PG	Finition GC Coating HDG	Finition SS316L Coating SS316L
Eclisse de fond 600 Bottom plate 600	481183	482343	486018

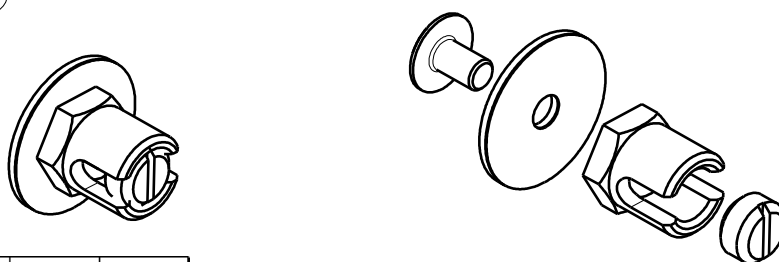
P31 - CHEMIN DE CÂBLES
P31 - CABLE TRAYS

5. INFORMATION COMPLEMENTAIRE POUR UL
ADDITIONAL INFORMATION FOR UL

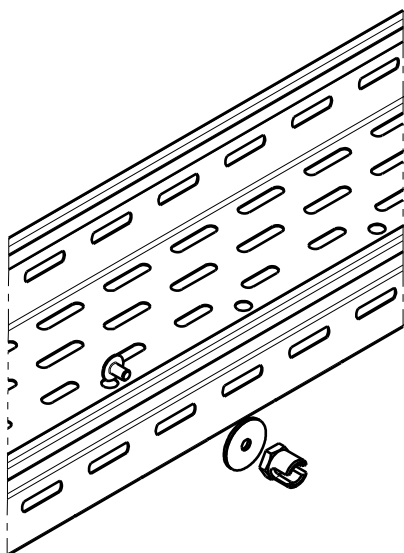
Référence(s): **585357**
Item(s): **585367**
585377

BORNE LAITON POUR CONDUCTEURS DE PROTECTION (BLT)
BRASS EARTH GROUNDING CONNECTION (EGC)

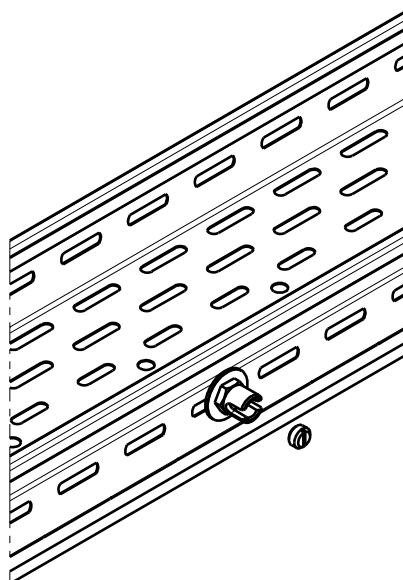
Obligatoire aux USA quand le systeme est utilisé conformément à la NFPA 70®
Requires mandatory usage in USA when the system is used according to NFPA 70®



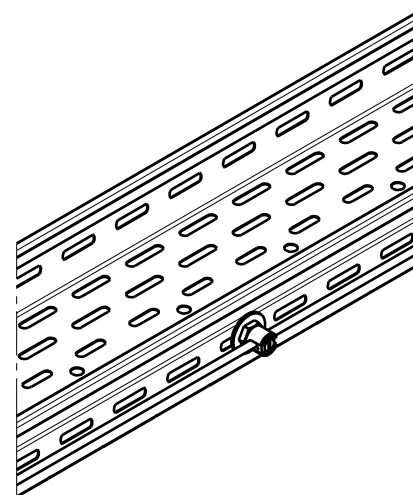
Designation Description	Code	Matière Material	Section (mm²)
BLT6-16 BORNE DE TERRE BLT6-16 CU EARTH TERMINAL	585357	BRASS	16
BLT6-35 BORNE DE TERRE BLT6-35 CU EARTH TERMINAL	585367		35
BLT6-50 BORNE DE TERRE BLT6-50 CU EARTH TERMINAL	585377		50



①



②



③

*Consulter le fiche technique FT1036 pour trouver d'autres infos complémentaires
*Refer to technical sheet FT1036 for further information