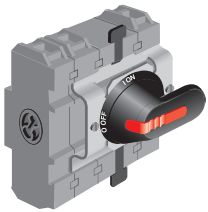
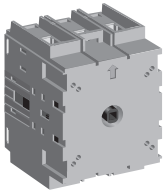
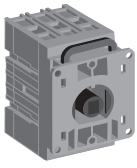


Interrupteurs-sectionneurs OT 16...160 A

Montage sur porte

1



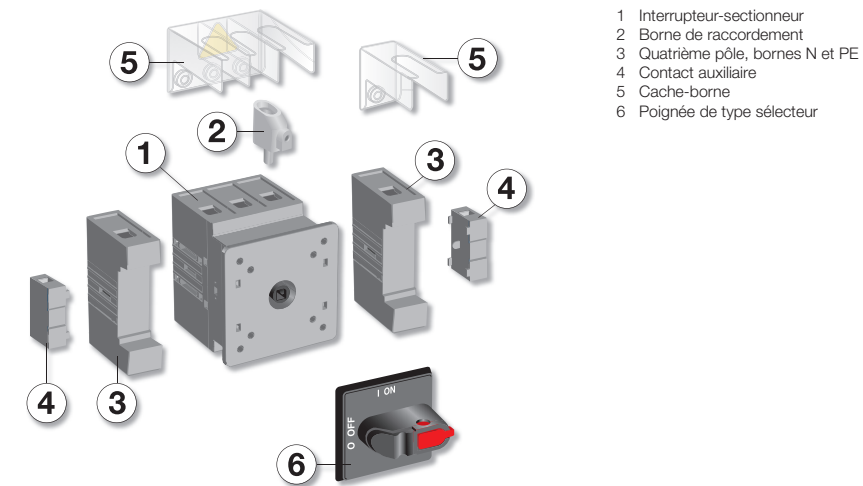
Montage sur porte, 3-4 pôles

- Commande frontale
- IEC 60947-3
- IP20.

AC22A	AC23A	Nb pôles	Type	Réf. Commerciale	Article
Tension ≤ 415 V					
A	A	Interrupteur-sectionneur + pôle additionnel			
16	16	3	OT16FT3	1SCA104838R1001	938982
		4	OT16FT3 + OTPS40FDN1	1SCA104838R1001 + 1SCA104999R1001	938982 + 939130
25	20	3	OT25FT3	1SCA104884R1001	939027
		4	OT25FT3 + OTPS40FDN1	1SCA104884R1001 + 1SCA104999R1001	939027 + 939130
40	23	3	OT40FT3	1SCA104940R1001	939080
		4	OT40FT3 + OTPS40FDN1	1SCA104940R1001 + 1SCA104999R1001	939080 + 939130
63	45	3	OT63FT3	1SCA105382R1001	939318
		4	OT63FT3 + OTPS80FD	1SCA105382R1001 + 1SCA105458R1001	939318 + 939389
80	75	3	OT80FT3	1SCA105431R1001	939366
		4	OT80FT3 + OTPS80FD	1SCA105431R1001 + 1SCA105458R1001	939366 + 939389
100	80	3	OT100FT3	1SCA105023R1001	939154
		4	OT100FT3 + OTPS125FD	1SCA105023R1001 + 1SCA105096R1001	939154 + 939223
125	90	3	OT125FT3	1SCA105060R1001	939190
		4	OT125FT3 + OTPS125FD	1SCA105060R1001 + 1SCA105096R1001	939190 + 939223
160	135	3	OT160ET3	1SCA022350R1960	910045
		4	OT160ET4	1SCA022460R6920	914397

Note : Poignée à commander séparément pour OT 16...125FT_. Pour OT 160ET_, poignée de type pistolet OHB65J6 et axe OXP6X130 inclus.

OT 16...125 FT



OT 160 ET

